

For lease

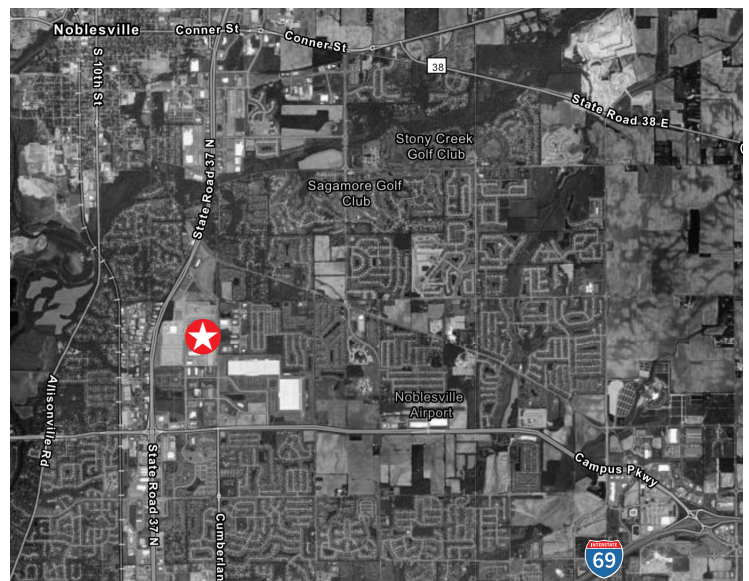
Washington Business Park - Building 2
9618 E 153rd St., Noblesville, IN 46060



Building 2

Located in a prime area for industrial and residential growth, Washington Business Park, Building 2 has a total building area of 247,163 SF. City utilities serve the park which is zoned Corporate Campus PUD. In this prime location, State Road 37 averages 30,021 cars per day, and the park is just 13 minutes to I-465.

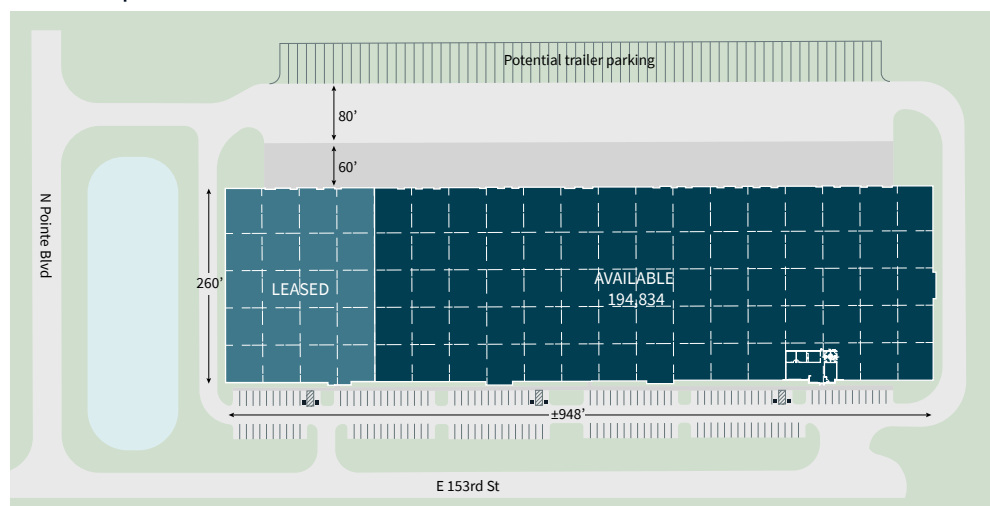
Location



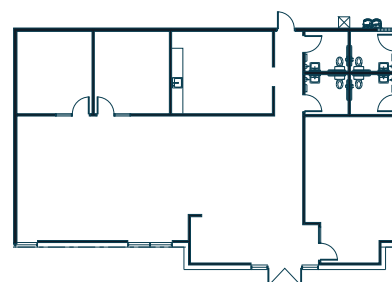
Building 2 highlights

Available s.f.	194,834 s.f.	Auto parking	±115
Divisible to	51,200 s.f.	Trailer parking	Ability to add up to ±68
Dimensions	948' x 260'	Lighting	LED, 30 FC with whips
Office s.f.	2,528 s.f.	Roof	TPO with R-value of 20
Clear height	28'	Power	2,000 amps
Dock doors with levelers	±18	Sprinkler	ESFR
Drive-in doors	3	Truck court	140' with 60' apron
Column spacing	50' x 50'/50' x 60'	Floor	4,000 PSI 7" unreinforced

Site plan



Office plan
2,528 s.f.



Owned by:



Brian Buschuk
Senior Managing Director
brian.buschuk@jll.com
+1 317 810 7180

Abigail Sievers
Senior Vice President
abigail.sievers@jll.com
+1 217 649 9820

Although information has been obtained from sources deemed reliable, JLL does not make any guarantees, warranties or representations, express or implied, as to the completeness or accuracy as to the information contained herein. Any projections, opinions, assumptions or estimates used are for example only. There may be differences between projected and actual results, and those differences may be material. JLL does not accept any liability for any loss or damage suffered by any party resulting from reliance on this information. If the recipient of this information has signed a confidentiality agreement with JLL regarding this matter, this information is subject to the terms of that agreement. ©2025 Jones Lang LaSalle IP, Inc. All rights reserved.