

PROJECT DATA:

SITE ACREAGE: 96.97 AC

BUILDING 1 SUMMARY:

BOMA AREA: 396,600 SF  
CLEAR HEIGHT: 36'-0" AFF  
SPRINKLER TYPE: ESFR  
TRUCK COURT DEPTH: 130'-0"  
TOTAL AUTO PARKING: 365  
TRAILER PARKING: 81  
DRIVE-INS: 2  
DOCK POSITIONS: 40  
FUTURE DOCK POSITIONS: 10

BUILDING 2 SUMMARY:

BOMA AREA: 326,188 SF  
CLEAR HEIGHT: 36'-0" AFF  
SPRINKLER TYPE: ESFR  
TRUCK COURT DEPTH: 130'-0"  
TOTAL AUTO PARKING: 285  
TRAILER PARKING: 65  
DRIVE-INS: 2  
DOCK POSITIONS: 32  
FUTURE DOCK POSITIONS: 4

BUILDING 3 SUMMARY:

BOMA AREA: 351,900 SF  
CLEAR HEIGHT: 36'-0" AFF  
SPRINKLER TYPE: ESFR  
TRUCK COURT DEPTH: 130'-0"  
TOTAL AUTO PARKING: 170  
TRAILER PARKING: 64  
DRIVE-INS: 2  
DOCK POSITIONS: 35  
FUTURE DOCK POSITIONS: 10

BUILDING 4 SUMMARY:

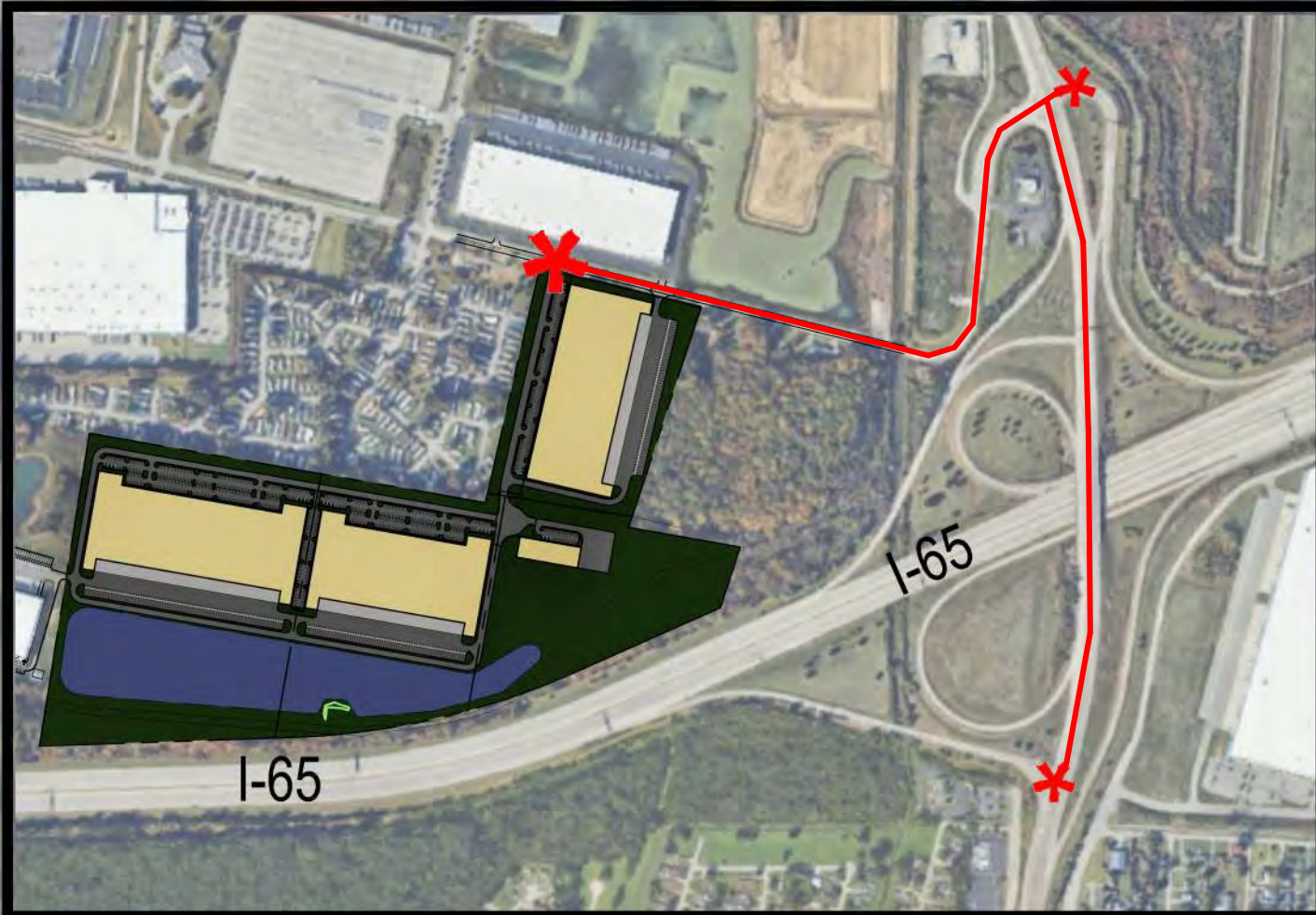
BOMA AREA: 30,000 SF  
CLEAR HEIGHT: 32'-0" AFF  
SPRINKLER TYPE: ESFR  
TRUCK COURT DEPTH: 150'-0"  
TOTAL AUTO PARKING: 36  
TRAILER PARKING: 0  
DRIVE-INS: 1  
DOCK POSITIONS: 3  
FUTURE DOCK POSITIONS: 1

MINOR LANE

170 AUTO PARKING

**C5 CENTERPORT 3**  
360'-0" x 960'-0"  
351,900 SF  
2 DRIVE-INS  
35 DOCK POSITIONS  
10 FUTURE DOCK POSITIONS  
1/2070 PARKING

64 TRAILER PARKING



SITE LEGEND:

- ▲ DOCK POSITION
- △ FUTURE DOCK POSITION
- ◆ DRIVE-IN DOOR

318 AUTO PARKING

**C5 CENTERPORT 1**  
370'-0" x 1,020'-0"  
396,600 SF  
2 DRIVE-INS  
40 DOCK POSITIONS  
10 FUTURE DOCKS  
1/1087 PARKING

81 TRAILER PARKING

238 AUTO PARKING

**C5 CENTERPORT 2**  
370'-0" x 830'-0"  
326,188 SF  
2 DRIVE-INS  
32 DOCK POSITIONS  
4 FUTURE DOCK POSITIONS  
1/1145 PARKING

65 TRAILER PARKING

**C5 CENTERPORT 4**  
100'-0" x 300'-0"  
30,000 SF  
1 DRIVE-INS  
3 DOCK POSITIONS  
1 FUTURE DOCK POSITIONS  
1/834 PARKING

I-65

