

For lease

Union Depot
214 4th Street E
St. Paul, MN 55101

www.uniondepot.org

Property highlights:

- Centrally located in downtown St. Paul, Union Depot is a multi-modal transportation hub and event center
- Welcomes more than one million visitors annually and hosts more than 400 public and private events
- Four daily Amtrak arrivals/departures and hundreds of buses daily
- Close to several major corporations, including, Travelers Insurance, Securian, Ecolab and Wells Fargo
- Walking distance to Mears Park, St. Paul Farmers Market and CHS Field, home of Minnesota Twins affiliate St. Paul Saints - drawing an average of 7,400 people to each of their 75 home games

Key Tenants:



JEFFERSON  LINES



Property Size:

Site: 33 Acres

Total GLA: 250,000 SF

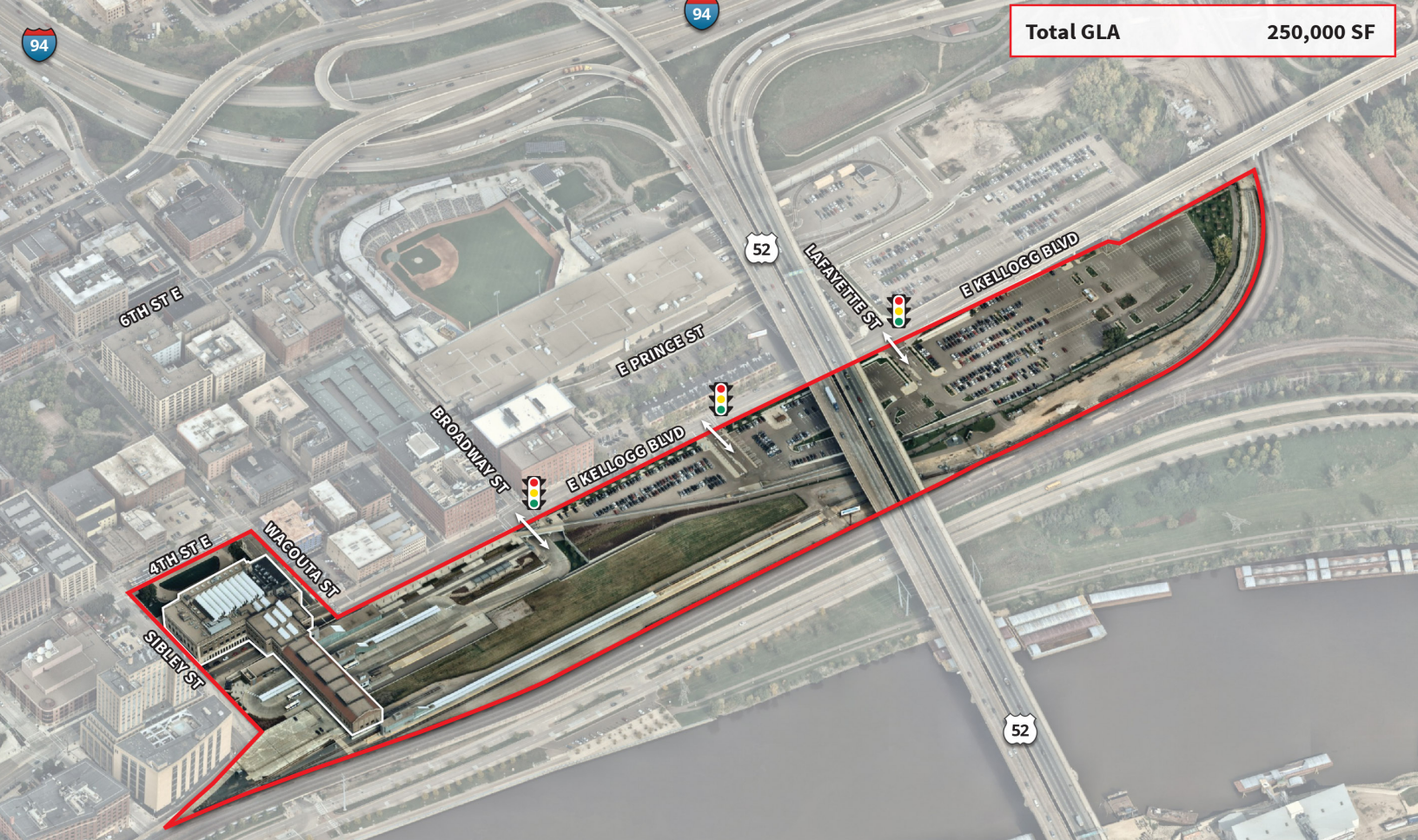
Lindsay Boyd

General Manager

+1 651 202 2701

lindsay.boyd@jll.com

jll.com



Total GLA

250,000 SF

Union Depot

Demographics

| Area Profile | 5-mile radius |
|-----------------------|---------------|
| Est. Population | 364,677 |
| Est. Households | 141,993 |
| Avg. Household Income | \$101,847 |
| Median Age | 34.8 |

Source: Esri, 2025

