

Manzanita Square

Retail for Lease at San Francisco State Campus

±1,172 SF and ±5,098 SF available



AMERICAN
CAMPUS
COMMUNITIES

Jones Lang LaSalle Brokerage, Inc. Real Estate License #: 01856260

Property overview

Manzanita Square is a student housing development project situated in the heart of San Francisco State University's campus and the surrounding Parkmerced neighborhood. With 170 apartments and 570 beds, this modern property offers state-of-the-art amenities, a convenient on-site parking garage, and five retail suites on the first two floors. Experience extraordinary living at Manzanita Square!

On-site amenities

Manzanita Building amenities include a small fitness center, game/theatre room, study/work spaces, shared commercial kitchen, laundry room and more, all managed by American Campus Communities, the nation's largest developer, owner and manager of high-quality student housing communities.





Eat + Drink

1. Stonestown Galleria

85 C Bakery Cafe
Blaze Pizza
Boudin Sourdough Bakery
Chipotle Mexican Grill
Gangnam Korean BBQ
CREAM
Ike's Love and Sandwiches
Jamba
Marugame Udon
McDonalds
Panda Express
Rooster & Rice
See's Candies
Starbucks

Trader Joe's
Whole Foods

2. Lakeshore Plaza

Chipotle Mexican Grill
Peets Coffee
Noah's Bagels
Ono Hawaiian BBQ
Subway
The Noodle House

3. Park Plaza

Poke Kana
Papa John's
Spressa Coffee

Retail

1. Stonestown Galleria

Apple
AT&T
Aveda
Game Stop
Express
Camps Sports
Foot Locker
Forever 21
Lids
Miniso
Sungass Hut
H&M
L'Occitane
Lush

Regal Cinemas
Target
Uniqlo
Verizon
Sephora
Swarovski
Victoria's Secret
Xfinity
Zara

2. Lakeshore Plaza

Lucky
Big 5 Sporting Goods
Petco
Ross

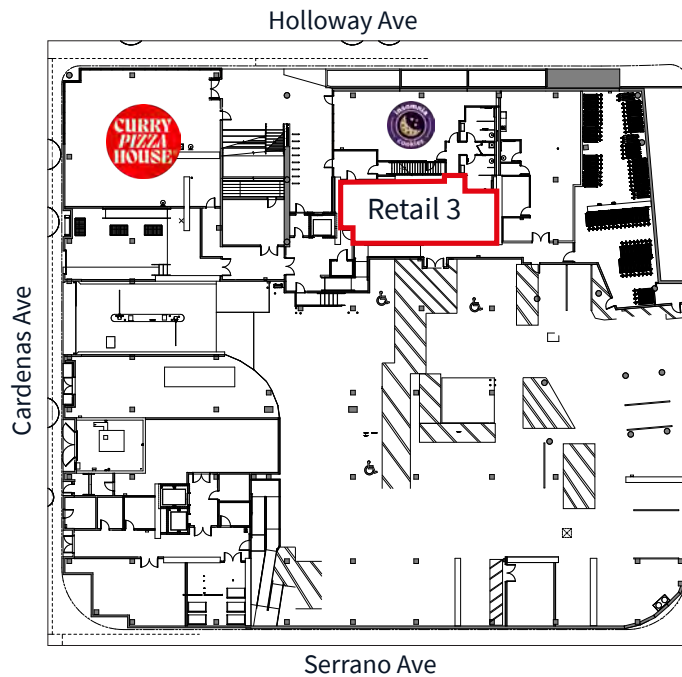
Wells Fargo Bank
Verizon Wireless

3. Park Plaza

Park Plaza Fine Foods
Enterprise Rent-A-Car
U-Haul

Retail landscape




Level 1



Level 2



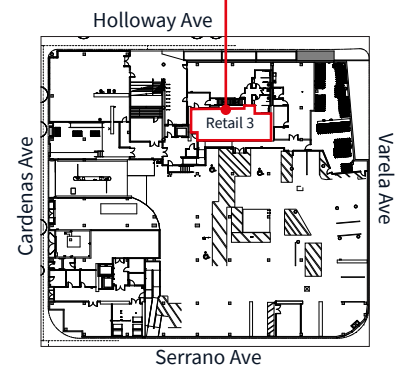
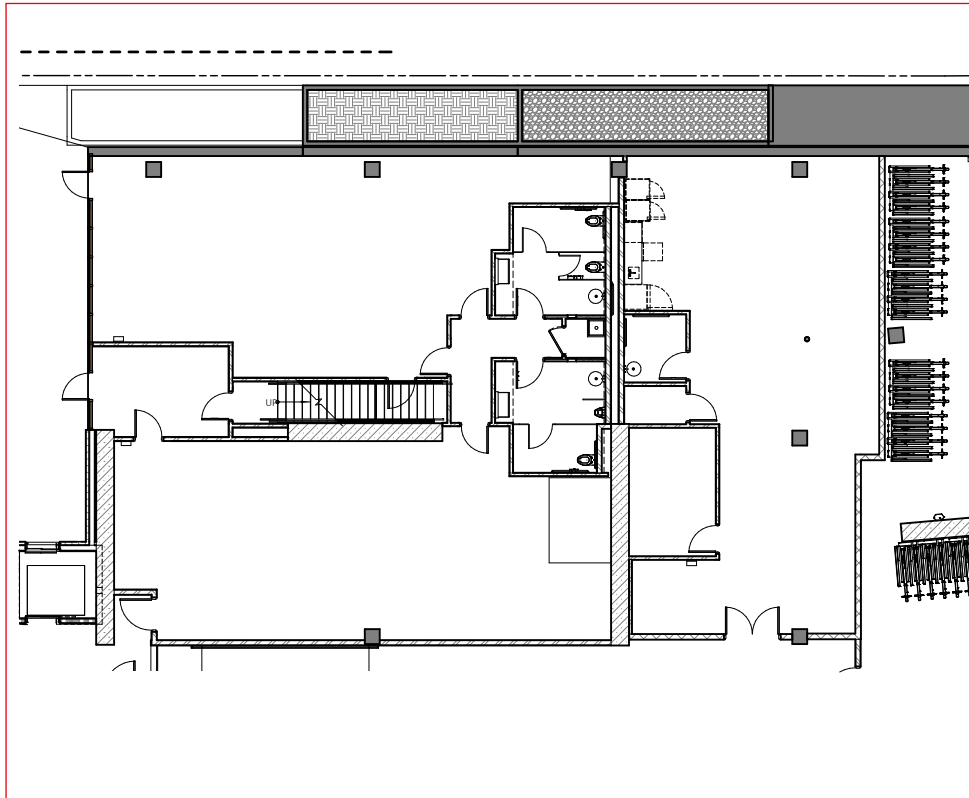
Available retail suites

| | | |
|----------|---------------------|---|
| Retail 1 | ±2,550 SF leased |  |
| Retail 2 | ±1,090 SF leased |  |
| Retail 3 | ±1,172 SF available | |
| Retail 4 | ±5,098 SF available | |
| Retail 5 | ±3,384 SF leased |  |



Retail 3

±1,172 SF



In-line retail space located at the prime entrance to Manzanita Square



Retail 3 has its own private entrance next to Retail 2, and across from Retail 1



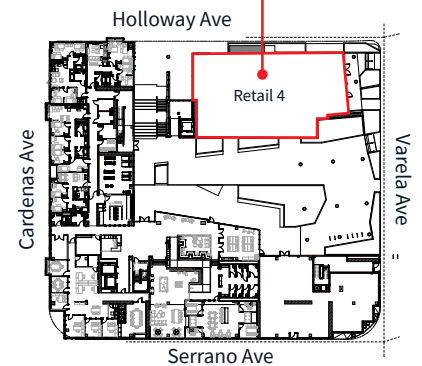
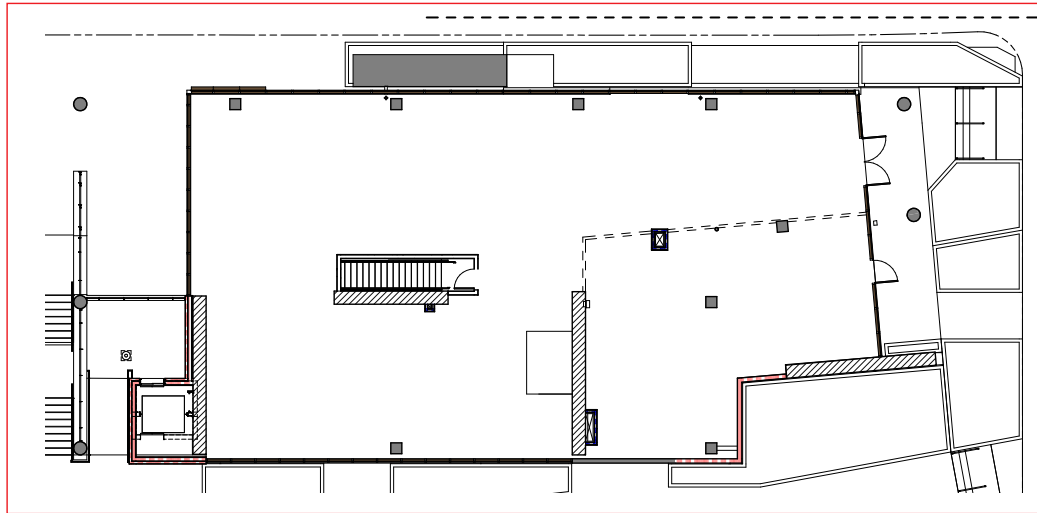
Brand new bathrooms complete and will be shared between Retail 2 & Retail 3 tenants



Ceiling height of 10'
(floor to ceiling)

Retail 4

±5,098 SF



Flagship space overlooking
Holloway Avenue and
SF State Campus



Elevated with clear sight line to
SF State's campus, bustling 19th
Avenue, and high traffic public
transportation hub



Ceiling height of 15'3" plus
ample natural light



Expansive open-space plan
with demising flexibility



Grocers, markets, gym/fitness center and
breweries are all preferred uses



Laura Tinetti

Executive Vice President

+1 415 228 3072

laura.tinetti@jll.com CA #

01358500

Justin Choi

Vice President

+1 415 395 7262

justin.choi@jll.com

CA #02107928



Although information has been obtained from sources deemed reliable, JLL does not make any guarantees, warranties or representations, express or implied, as to the completeness or accuracy as to the information contained herein. Any projections, opinions, assumptions or estimates used are for example only. There may be differences between projected and actual results, and those differences may be material. JLL does not accept any liability for any loss or damage suffered by any party resulting from reliance on this information. If the recipient of this information has signed a confidentiality agreement with JLL regarding this matter, this information is subject to the terms of that agreement. ©2025 Jones Lang LaSalle Brokerage, Inc. All rights reserved.