

215 FREMONT
SAN FRANCISCO



RETAIL FOR
LEASE



215 FREMONT

SAN FRANCISCO



SOUTH FINANCIAL DISTRICT

215 Fremont is a Class A, 8-story building located at the juxtaposition of South FiDi and the emerging East Cut neighborhood. It's situated mere steps away from the Transbay Transit Center with its 5.4-acre rooftop park and is adjacent to transportation options including BART, Golden Gate Ferry, MUNI bus lines and Cal Train offering convenient access for the 276,070 daytime employee base.

No submarket in San Francisco has experienced more growth than the Transbay and East Cut neighborhood. One of the fastest growing submarkets in the country, the neighborhood has seen record breaking levels of office growth over the past 3 years. On average, Fremont Street sees 45,281 drivers per day and Howard Street sees 12,795.

Active. Educated. Affluent. Creative. The area's customer profile provides excellent demographic levels for urban retailers to succeed and thrive.

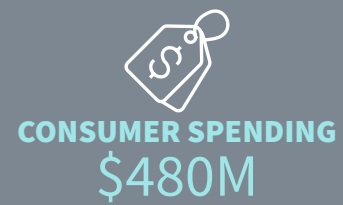




215 FREMONT

SAN FRANCISCO

THE DEMOGRAPHICS

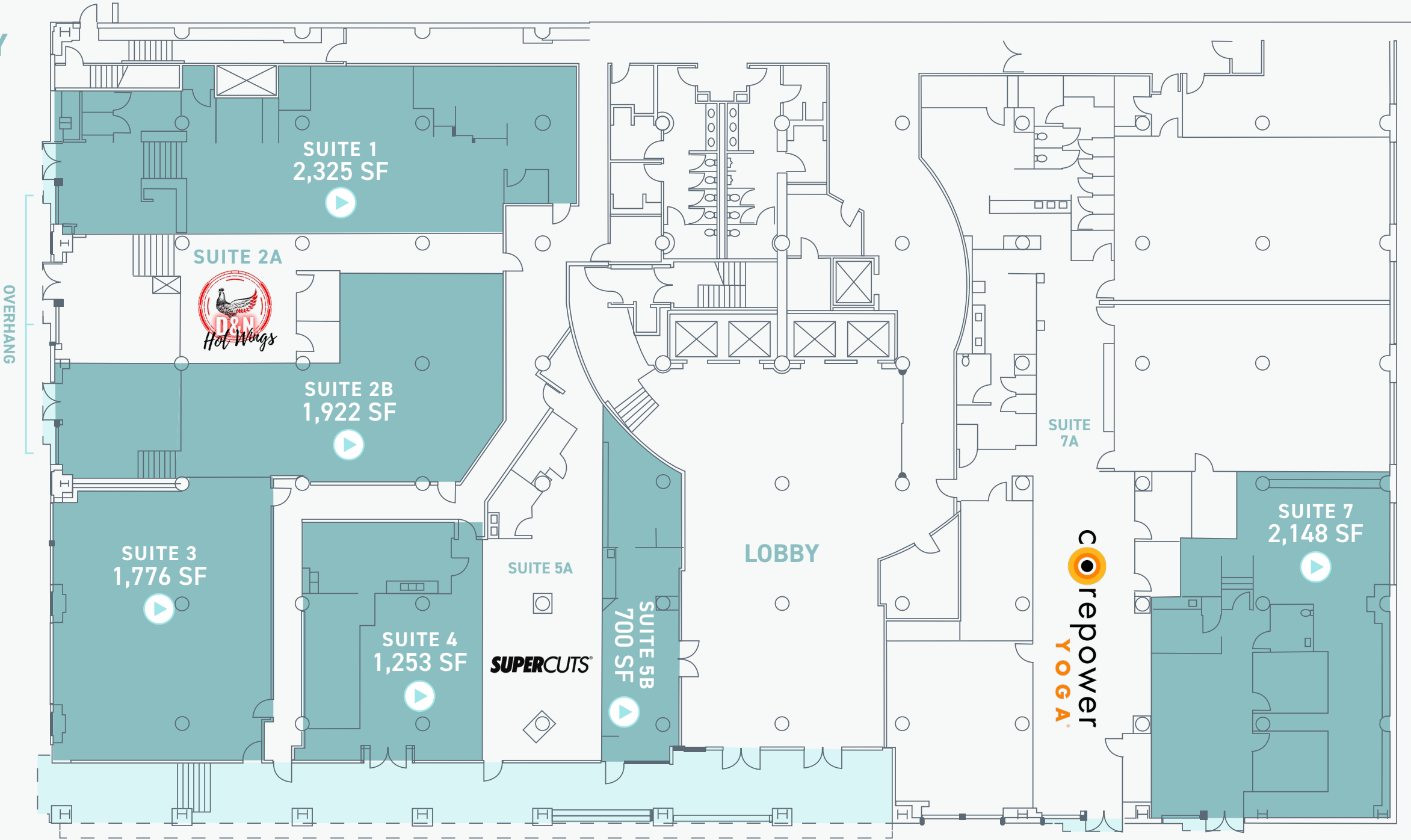




215 FREMONT
SAN FRANCISCO

**THE
PROPERTY**

HOWARD ST



FREMONT ST





215 FREMONT

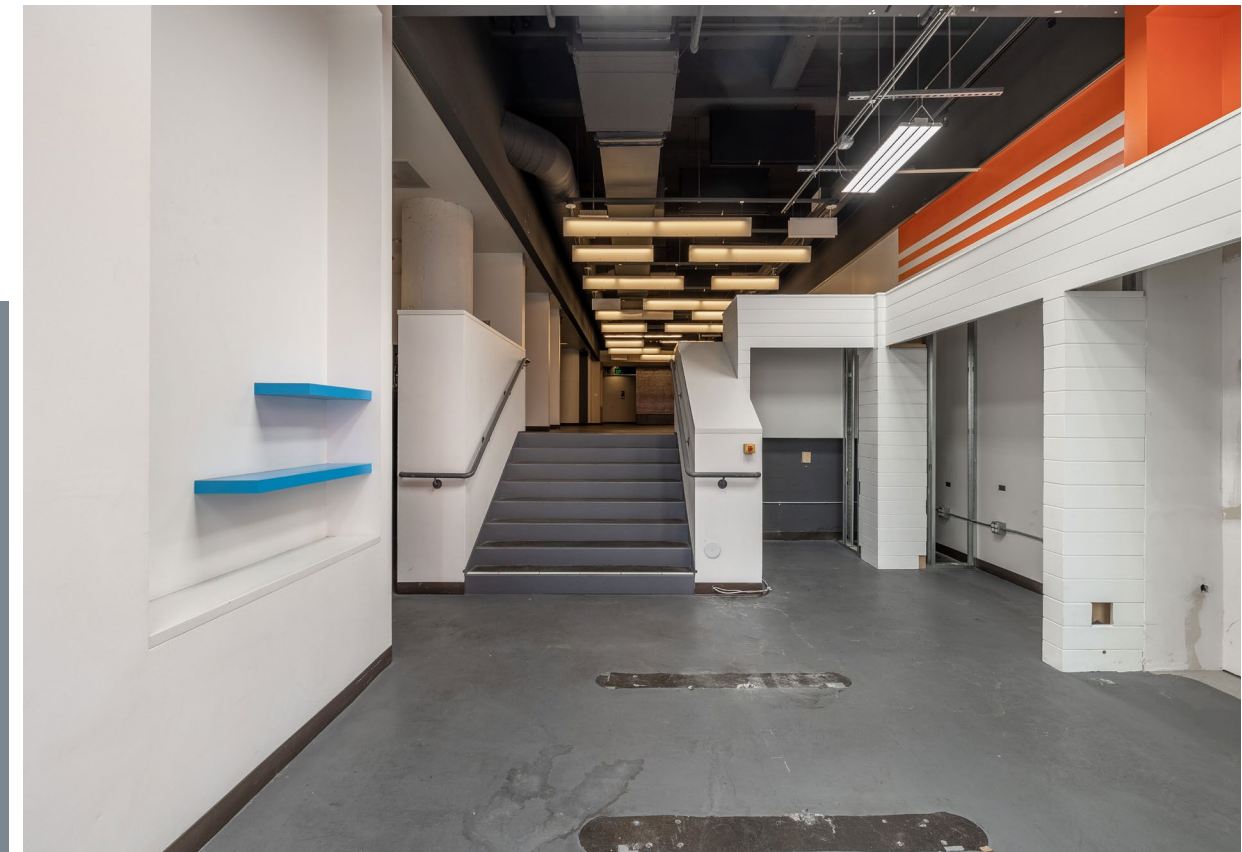
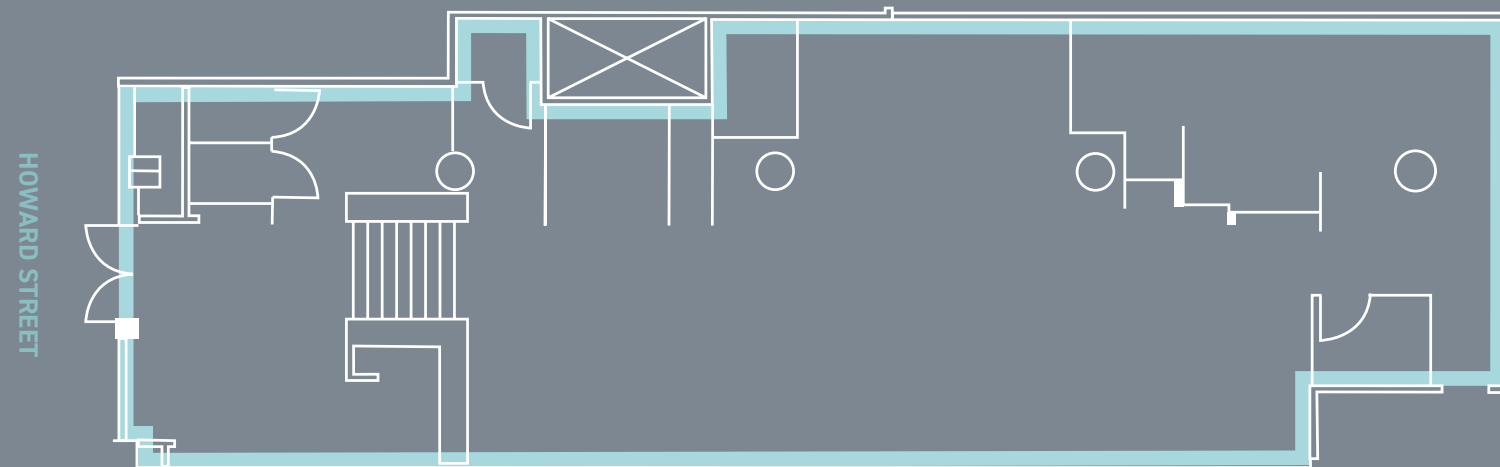
SAN FRANCISCO

THE SPACE

SUITE 1 - 2,325 SF

HIGHLIGHTS:

- Ideal for boutique retail, health, and beauty services
- Move-in ready (formerly a salon)
- Potential to combine with Suite 2 for up to 3,583 SF
- Employee kitchen and ADA bathrooms





215 FREMONT

SAN FRANCISCO

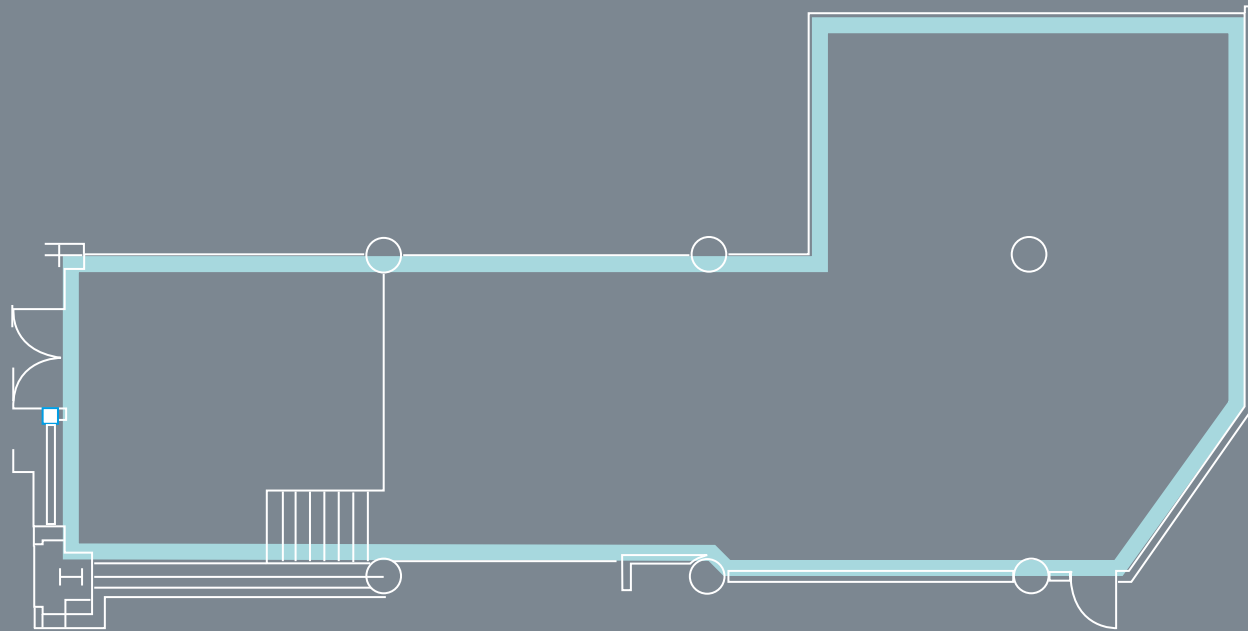
THE SPACE

SUITE 2B - 1,922 SF

HIGHLIGHTS:

- Ideal for fast casual or full service restaurant
- Move-in ready (former cafe)
- Includes full kitchen hookups with Type 1 hood and grease trap

HOWARD STREET





215 FREMONT

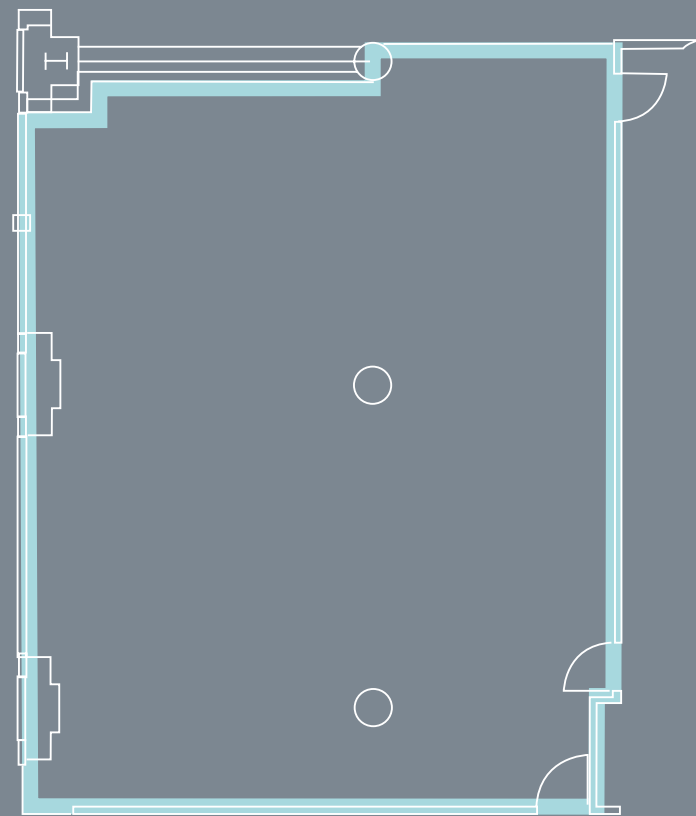
SAN FRANCISCO

THE SPACE

SUITE 3 - 1,776 SF

HIGHLIGHTS:

- Prime Visibility of corner suite available
- Ideal 2nd gen café space
- Type 2 Venting exists with FF&E



HOWARD STREET





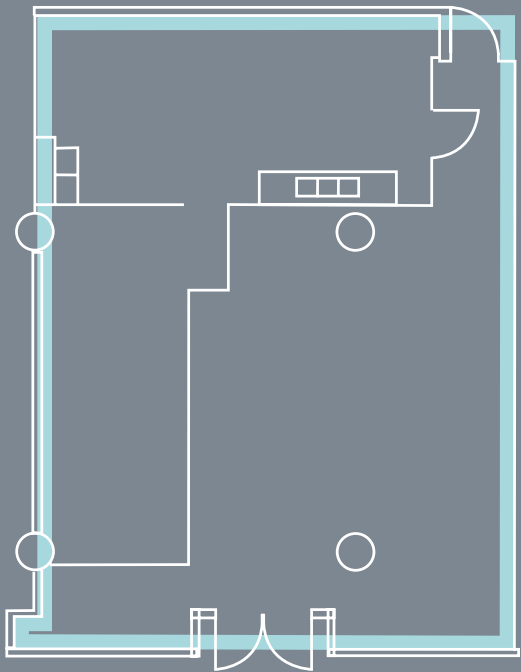
215 FREMONT
SAN FRANCISCO

THE SPACE

SUITE 4 - 1,253 SF

HIGHLIGHTS:

- Ideal for deli or marketplace operator
- Existing kitchen in place with Type 2 hood, sinks, and walk-in refrigeration unit



FREMONT STREET





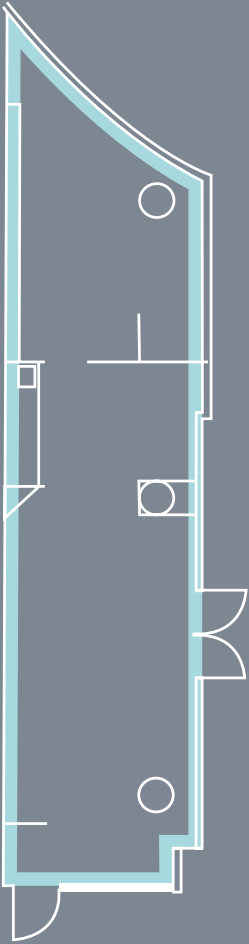
215 FREMONT
SAN FRANCISCO

THE SPACE

SUITE 5B - 700 SF

HIGHLIGHTS:

- Ideal for coffee or cafe
- Updated interior includes FFE
- Type 2 Hood
- Entrances from the street and lobby



FREMONT STREET





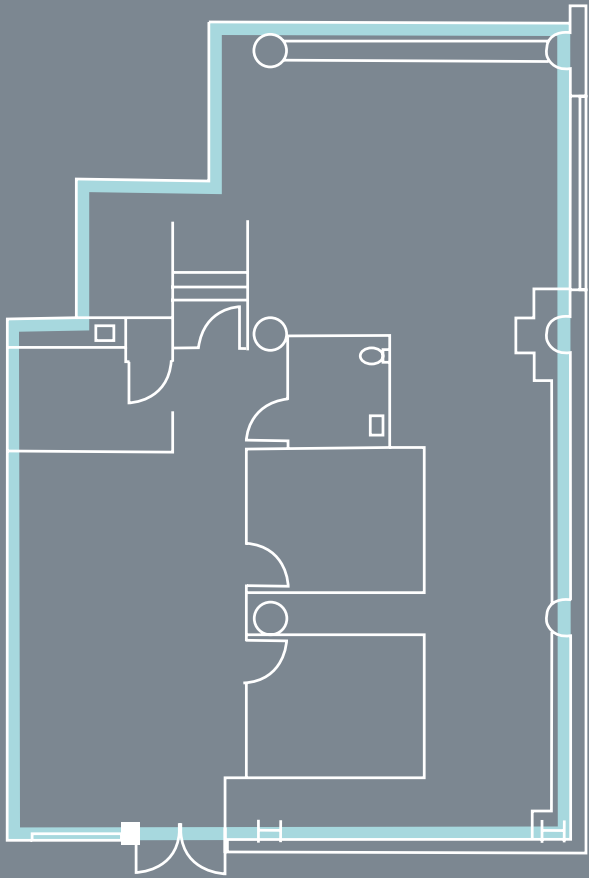
215 FREMONT
SAN FRANCISCO

THE SPACE

SUITE 7 - 2,148 SF

HIGHLIGHTS:

- Ideal for Medical and/or health and wellness
- Existing patient rooms in place
- Adjacent to CorePower Yoga



FREMONT STREET





215 FREMONT
SAN FRANCISCO



Disclaimer Language: Although information has been obtained from sources deemed reliable, JLL does not make any guarantees, warranties or representations, express or implied, as to the completeness or accuracy as to the information contained herein. Any projections, opinions, assumptions or estimates used are for example only. There may be differences between projected and actual results, and those differences may be material. JLL does not accept any liability for any loss or damage suffered by any party resulting from reliance on this information. If the recipient of this information has signed a confidentiality agreement with JLL regarding this matter, this information is subject to the terms of that agreement. ©2025 Jones Lang LaSalle Brokerage, Inc. All rights reserved.

CONTACT

Laura Tinetti
Executive Vice President
Laura.Tinetti@jll.com
415-228-3072
CA #01358500

