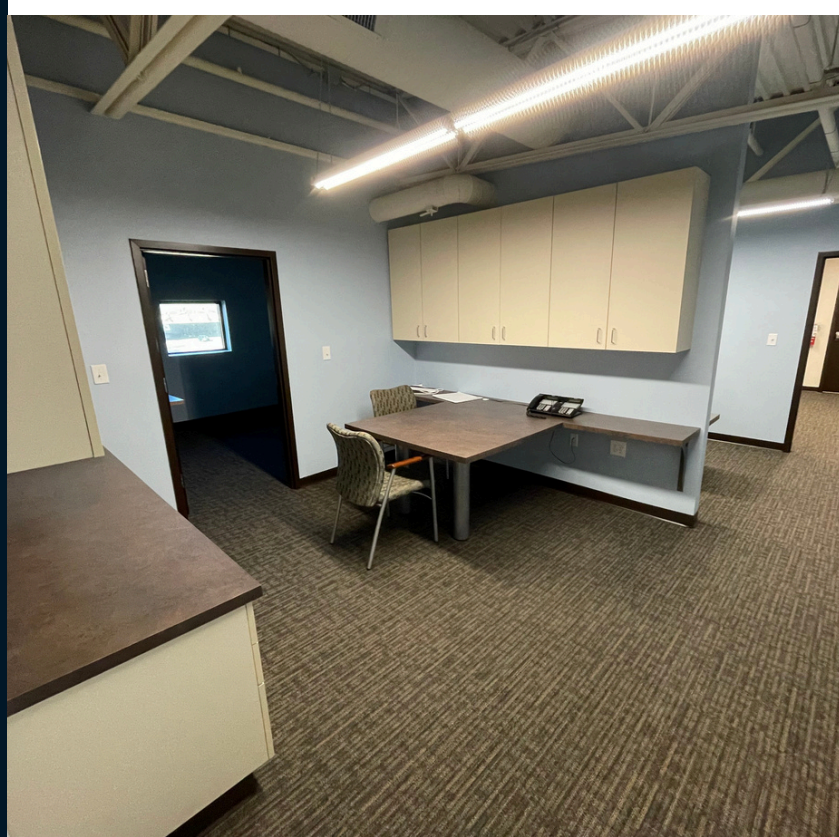
 **JLL** SEE A BRIGHTER WAY

Second floor for sublease

2,452 sf
with elevator access

8570 Northwest Blvd
Indianapolis, IN 46278



Property Overview & Demographics



[Floor plan](#)

[Photos](#)

- Move-in ready office space, could be converted to medical use
- Gross lease terms available
- Adjacent to Trader's Point Shopping Center, OrthoIndy, and Park 100 Industrial Park
- Excellent visibility from W. 86th Street and north/south bound I-465
- 35-minute drive to Indianapolis International Airport
- 35,142+ daily traffic via W. 86th Street
- 82,470+ daily traffic via I-465

Tim Murray

+1 317 810 7363
tim.murray@jll.com

Luke Aeschliman

+1 317 703 9904
luke.aeschliman@jll.com

Source: ESRI 2024

	1 mile	3 miles	5 miles
Total population	954	31,456	127,774
Total households	340	13,556	52,233
Average HH income	\$176,391	\$127,563	\$118,510
Median age	44.9	40.3	36.9

Although information has been obtained from sources deemed reliable, neither Owner nor JLL makes any guarantees, warranties or representations, express or implied, as to the completeness or accuracy as to the information contained herein. Any projections, opinions, assumptions or estimates used are for example only. There may be differences between projected and actual results, and those differences may be material. The Property may be withdrawn without notice. Neither Owner nor JLL accepts any liability for any loss or damage suffered by any party resulting from reliance on this information. If the recipient of this information has signed a confidentiality agreement regarding this matter, this information is subject to the terms of that agreement. © 2025. Jones Lang LaSalle IP, Inc. All rights reserved.