

# XCHANGE ORDINARY FOR YOUR NEW EXTRAORDINARY

Future-forward office suites ranging to suit your needs.

# PMX

Plymouth  
Meeting Xchange



Office & Medical Availabilities  
from 1,100 SF - 100,000 SF

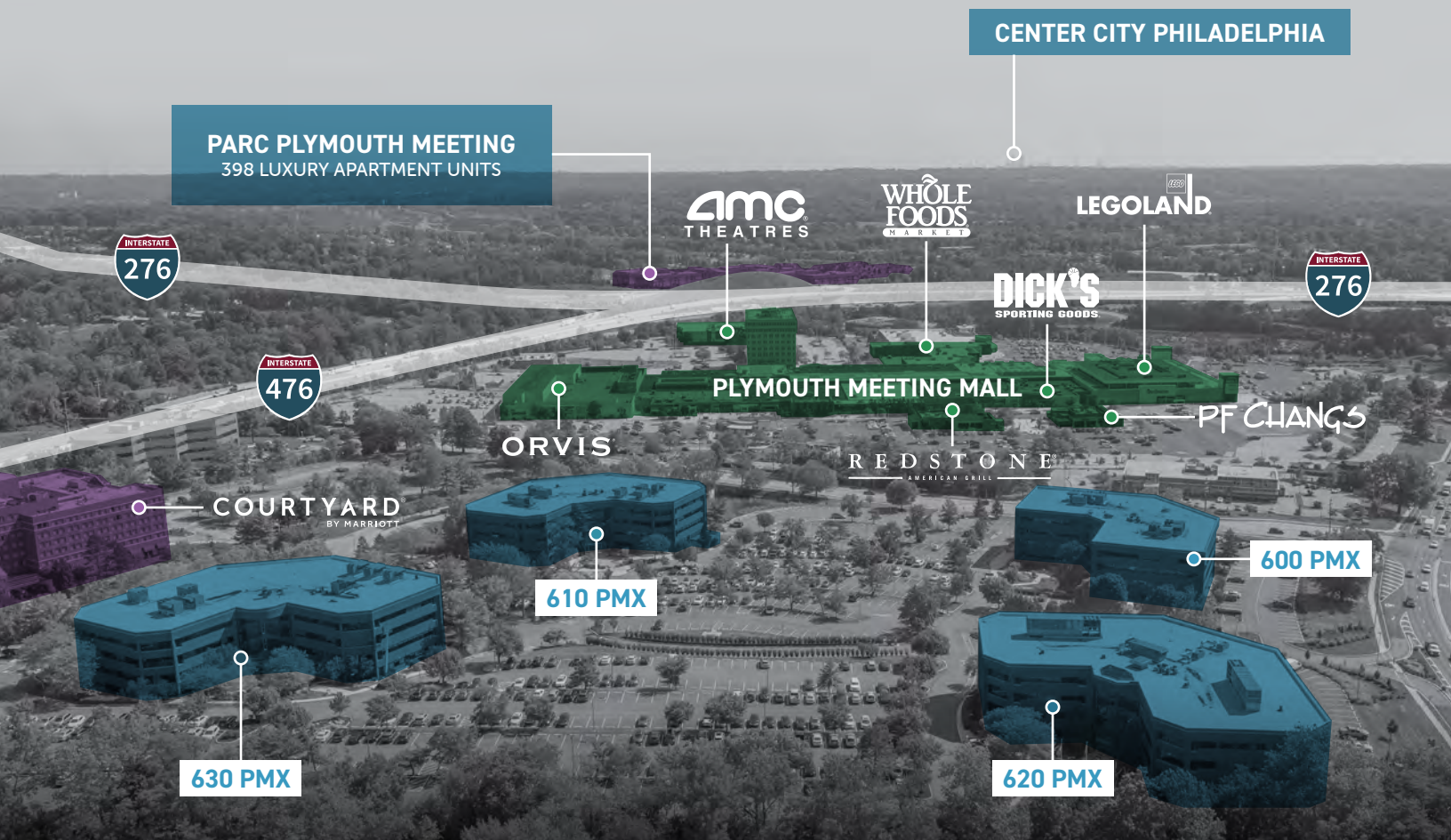


Located at the I-476 and PA Turnpike Interchange  
in Plymouth Meeting, Pennsylvania



FIND CONVENIENCE  
& ACCESSIBILITY AT

# THE XCHANGE



## PLYMOUTH MEETING MALL

984,000 SF of Retail  
70+ Retailers & Restaurants

## »»» ADDITIONAL NEARBY AMENITIES

- Chipotle
- California Pizza Kitchen
- Miller's Ale House
- CAVA
- Shake Shack
- Dave & Busters

Click the link below or scan the code to see all the eateries and amenities just a short walk away at Plymouth Meeting Mall!





**PMX** | Plymouth Meeting Xchange



PLYMOUTH MEETING MALL

PARC PLYMOUTH MEETING

METROPLEX MALL



#### KEY DISTANCES

Conshohocken	10 mins
King of Prussia	15 mins
Philadelphia	30 mins

# AT A GLANCE.



Located within minutes of on-ramps to I-476 and I-276



Walking distance to Plymouth Meeting Mall, one of Greater Philadelphia's premier upscale shopping and dining destinations



2 upscale hotels on-site:  
Courtyard by Marriott, DoubleTree by Hilton



Planned capital improvements by ownership include additional conference & training facilities and a golf simulator







# ONE CAMPUS.

AN ENDLESS **X**CHANGE OF AMENITIES FOR ALL BUILDING TENANTS.



Grab-and-Go Café



Rotating food trucks



Modern fitness center with lockers  
and shower facilities



50-seat, state-of-the-art  
conference facility



Game room with pool table, Playstation 4,  
shuffleboard, and foosball table

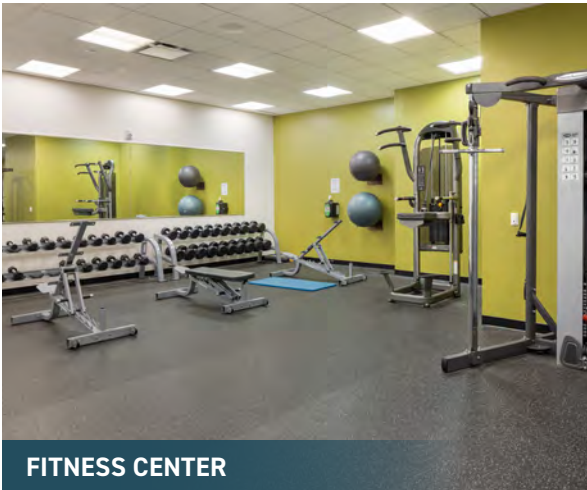


Picturesque 22-acre setting with outdoor  
seating and a pond with fountain

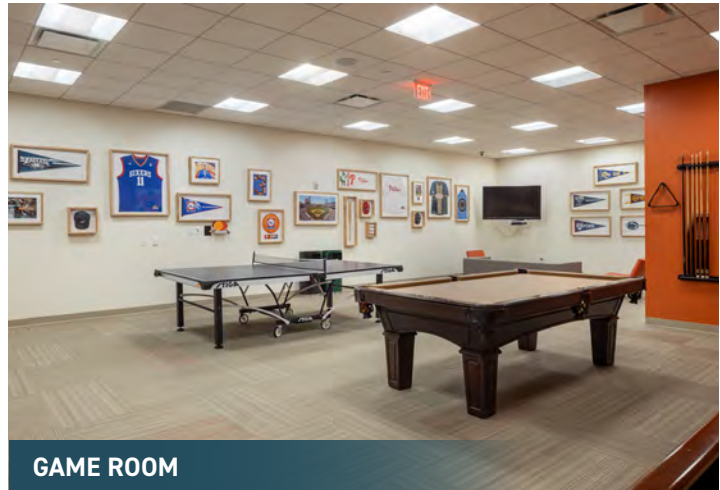


LOBBY / ATRIUM





**FITNESS CENTER**



**GAME ROOM**



**CONFERENCE CENTER**



**YOGA STUDIO**



**CAFÉ SEATING AREA**



600

PMX

Plymouth  
Meeting Xchange

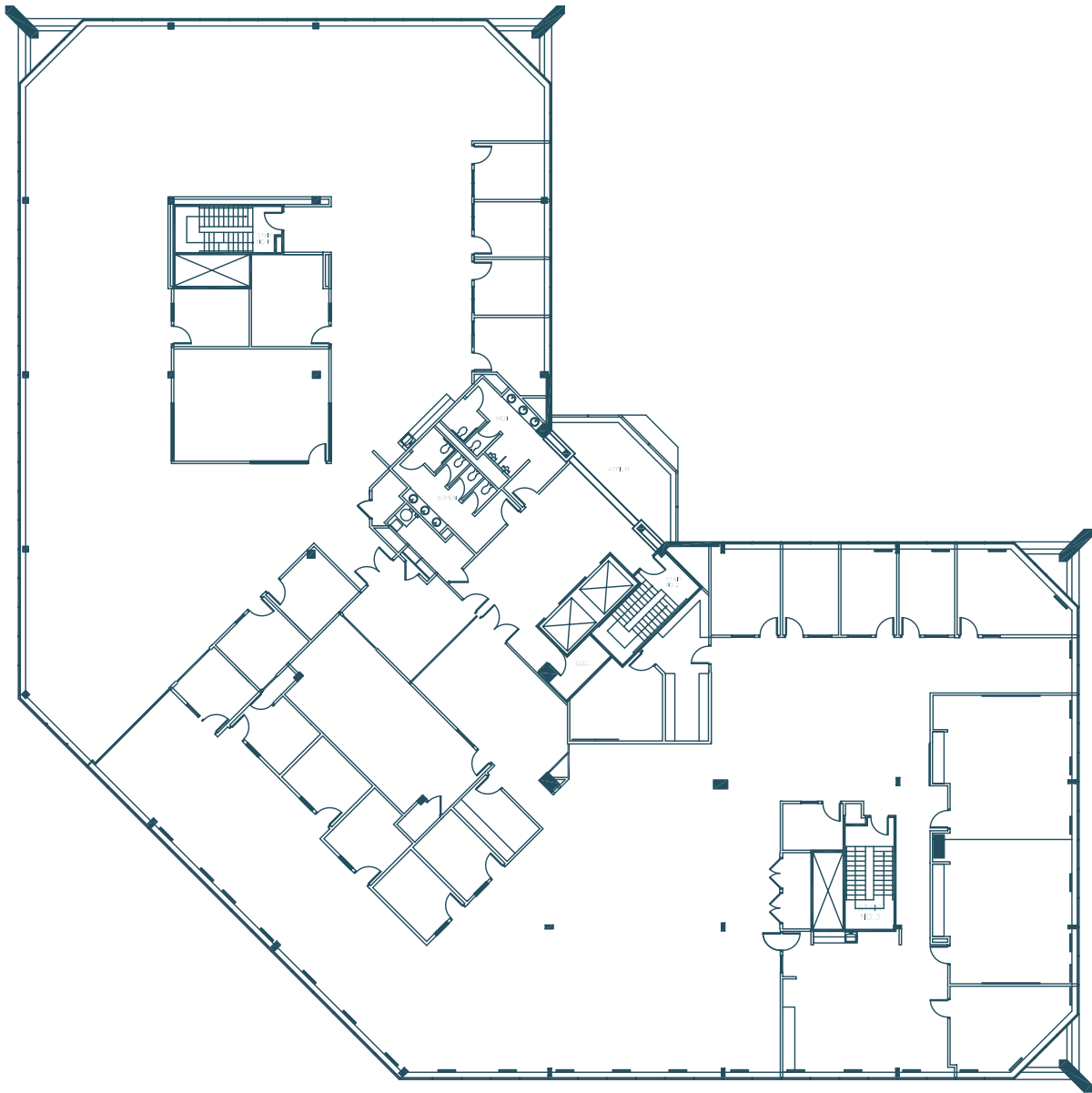


## »» BUILDING 600 OVERVIEW MEDICAL OPPORTUNITIES AVAILABLE

- Address: 600 West Germantown Pike
- Class A
- Year Renovated: 2022
- Building size: 89,626 SF
- Typical Floor: 22,406 SF
- Energy Star Labeled







Sample Floor Plan



610

PMX

Plymouth  
Meeting Xchange

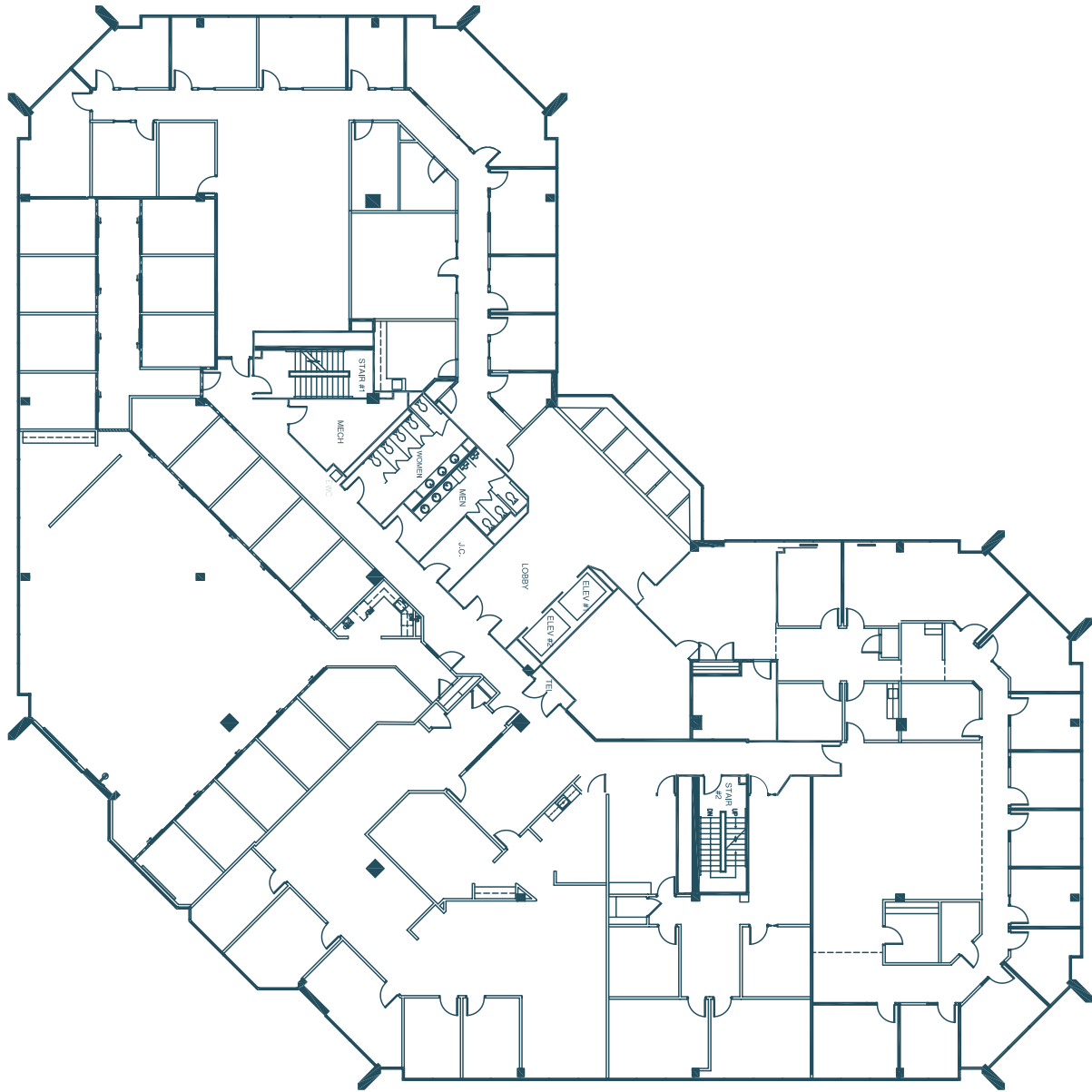


## »» BUILDING 610 OVERVIEW

- **Address:** 610 West Germantown Pike
- **Class A**
- **Year Renovated:** 2022
- **Building size:** 90,088 SF
- **Typical Floor:** 22,522 SF
- **Energy Star Labeled**







Sample Floor Plan





620

PMX

Plymouth  
Meeting Xchange

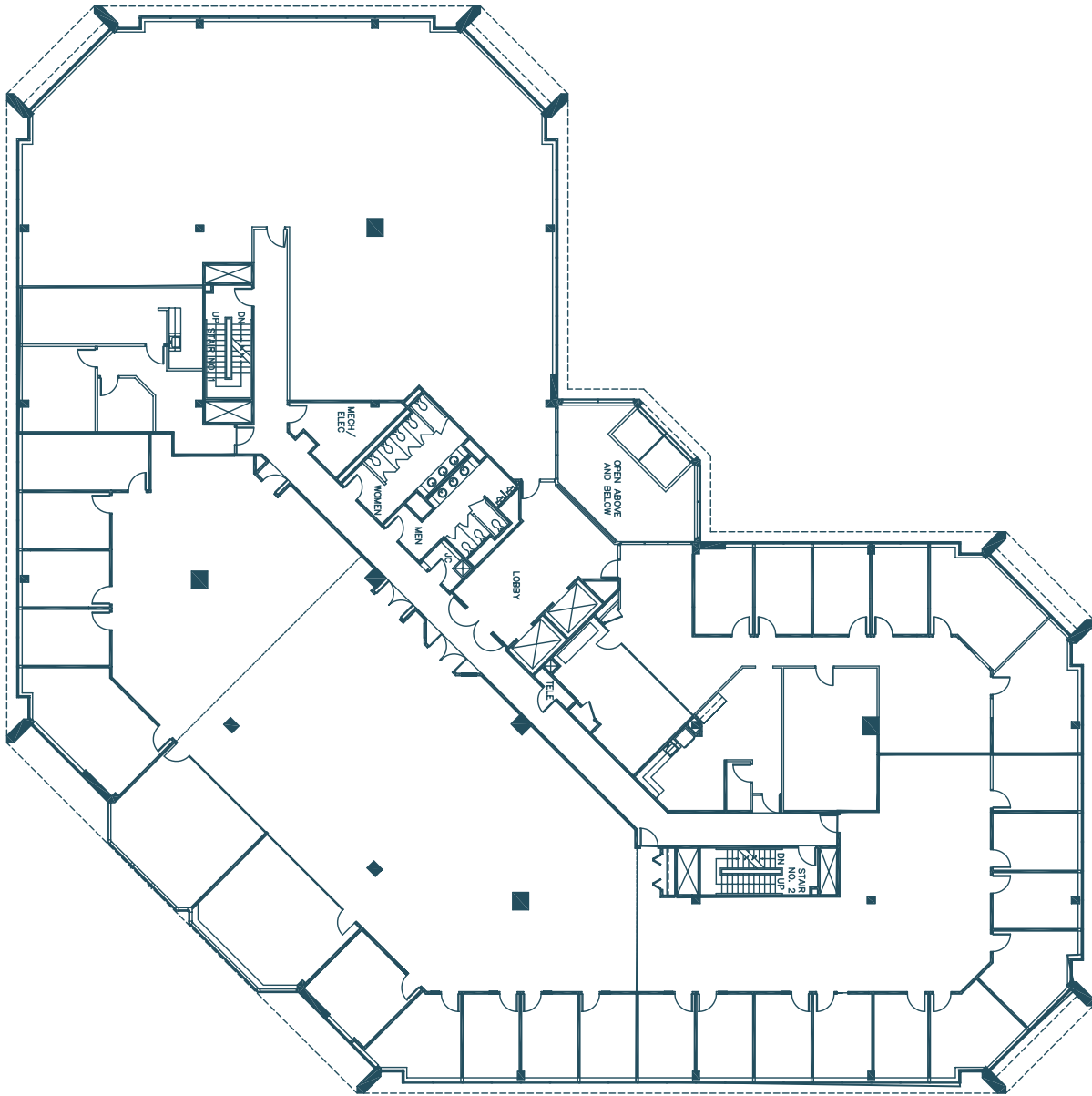


## »» BUILDING 620 OVERVIEW

- **Address:** 620 West Germantown Pike
- **Class A**
- **Year Renovated:** 2022
- **Building size:** 90,183 SF
- **Typical Floor:** 22,545 SF
- **Energy Star Labeled**







Sample Floor Plan





630

PMX

Plymouth  
Meeting Xchange



## »» BUILDING 630 OVERVIEW

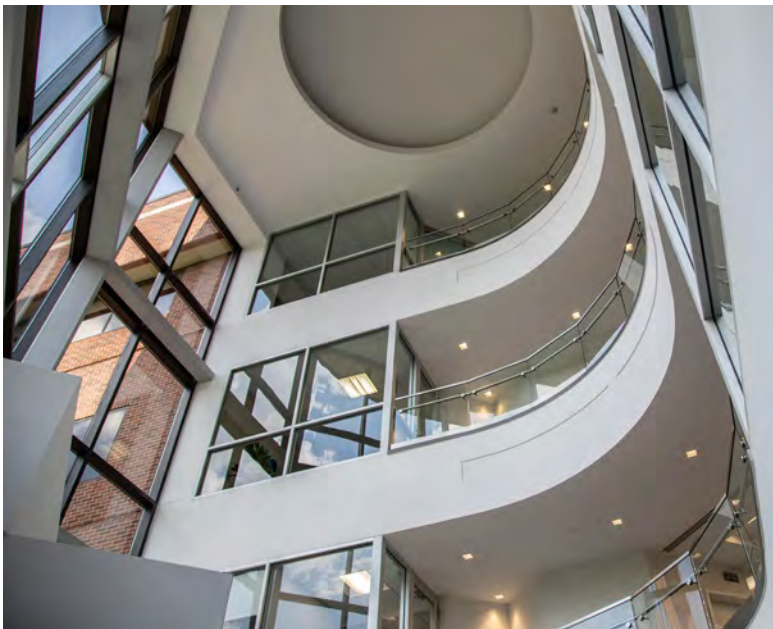
- **Address:** 630 West Germantown Pike
- **Class A**
- **Year Renovated:** 2022
- **Building size:** 89,870 SF
- **Typical Floor:** 22,467 SF
- **Energy Star Labeled**







Sample Floor Plan





660

PMX

Plymouth  
Meeting Xchange

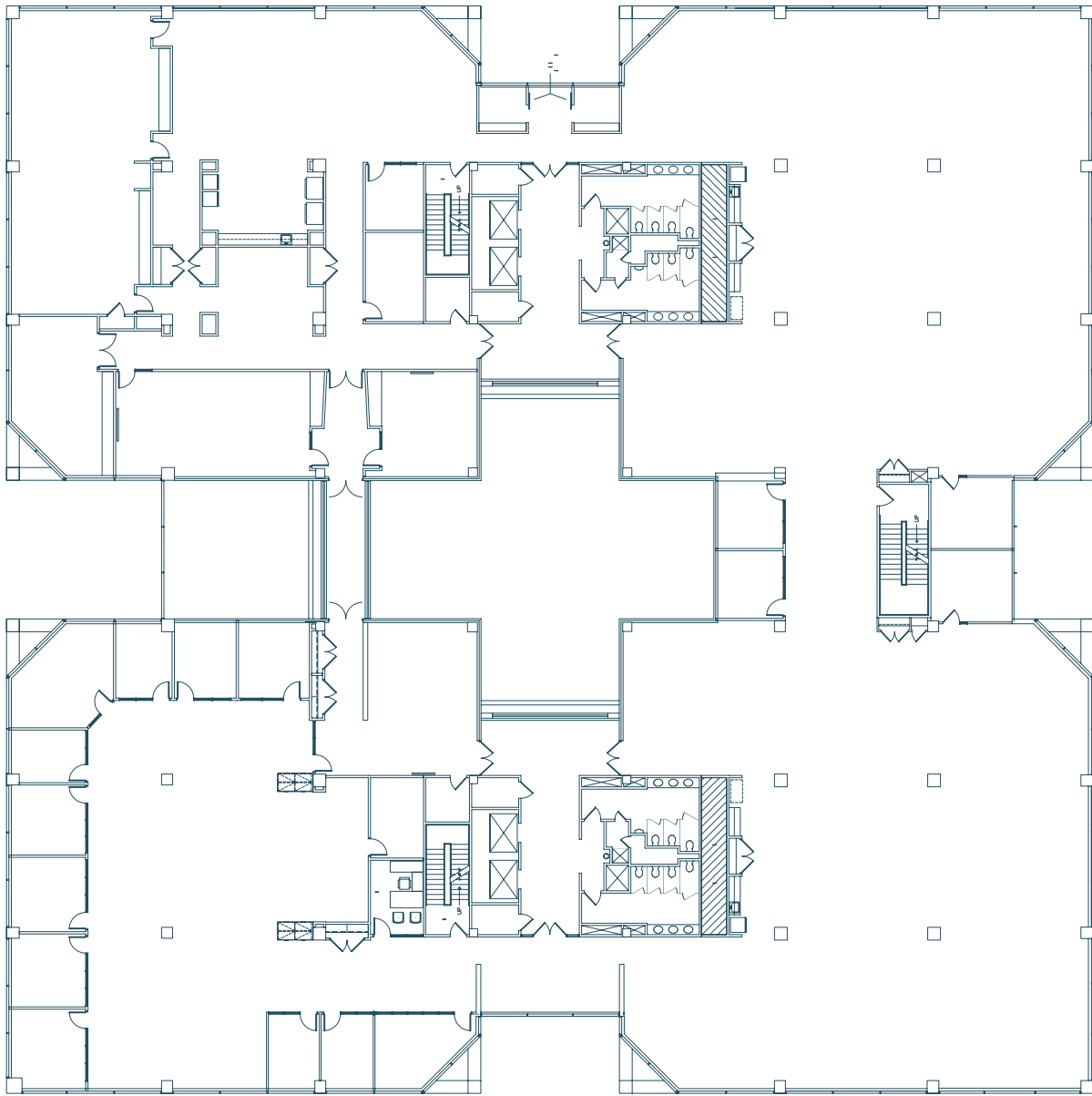


## »» BUILDING 660 OVERVIEW

- **Address:** 660 West Germantown Pike
- **Class A**
- **Year Renovated:** 2014
- **Building size:** 161,521 SF
- **Typical Floor:** 26,920 SF
- **Energy Star Labeled**







Sample Floor Plan





# PMX

## Plymouth Meeting Xchange

**FOR MORE INFORMATION AND TO SCHEDULE A PRIVATE TOUR:**

**ADAM SHUTE**  
+1 610 574 3869  
[adam.shute@jll.com](mailto:adam.shute@jll.com)

**RYAN FITZPATRICK**  
+1 610 639 8980  
[ryan.fitzpatrick@jll.com](mailto:ryan.fitzpatrick@jll.com)



Although information has been obtained from sources deemed reliable, neither Owner nor JLL makes any guarantees, warranties or representations, express or implied, as to the completeness or accuracy as to the information contained herein. Any projections, opinions, assumptions or estimates used are for example only. There may be differences between projected and actual results, and those differences may be material. The Property may be withdrawn without notice. Neither Owner nor JLL accepts any liability for any loss or damage suffered by any party resulting from reliance on this information. If the recipient of this information has signed a confidentiality agreement regarding this matter, this information is subject to the terms of that agreement. ©2025 Jones Lang LaSalle IP, Inc. All rights reserved.