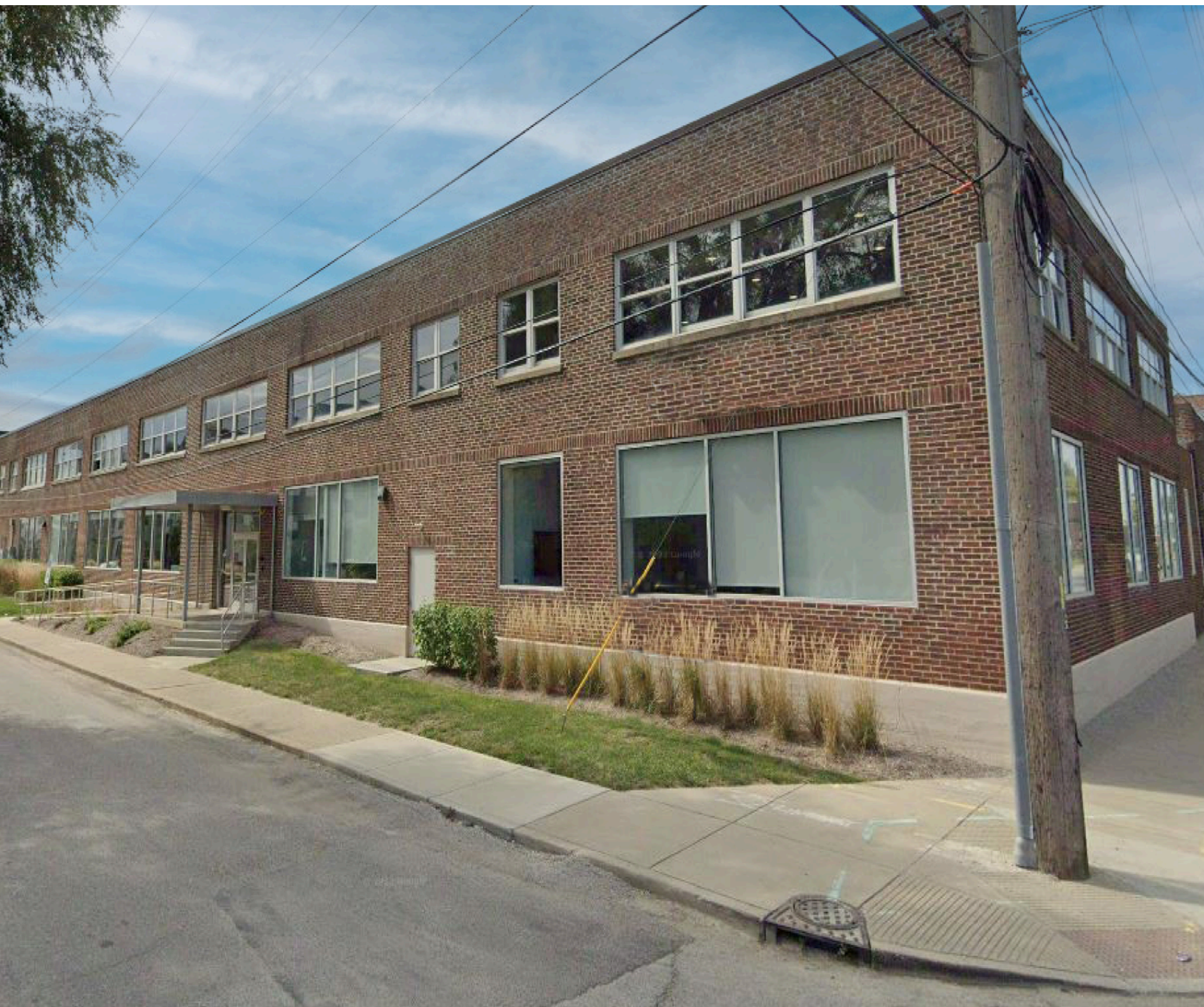


For Lease

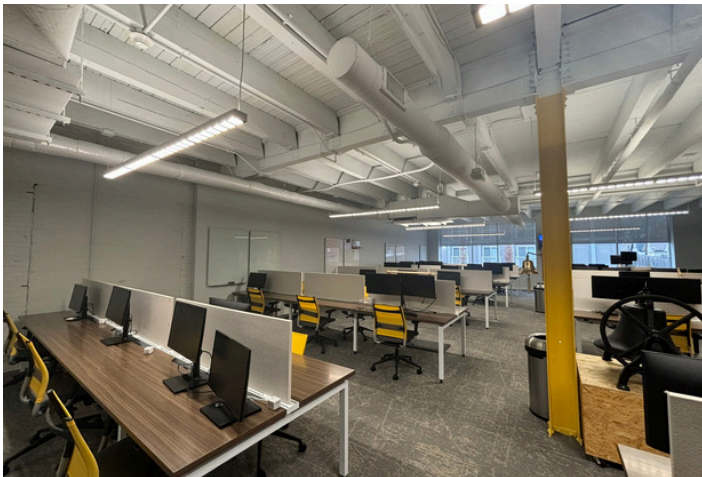
Creative Office Space

1129 E. 16th Street
Indianapolis, IN 46202



Property Overview

10,202 RSF of move-in ready office space on 1st floor available for lease, located in the Midtown Submarket just 10 minutes to Downtown Indianapolis



**Fully furnished first floor space
with high-end finishes**

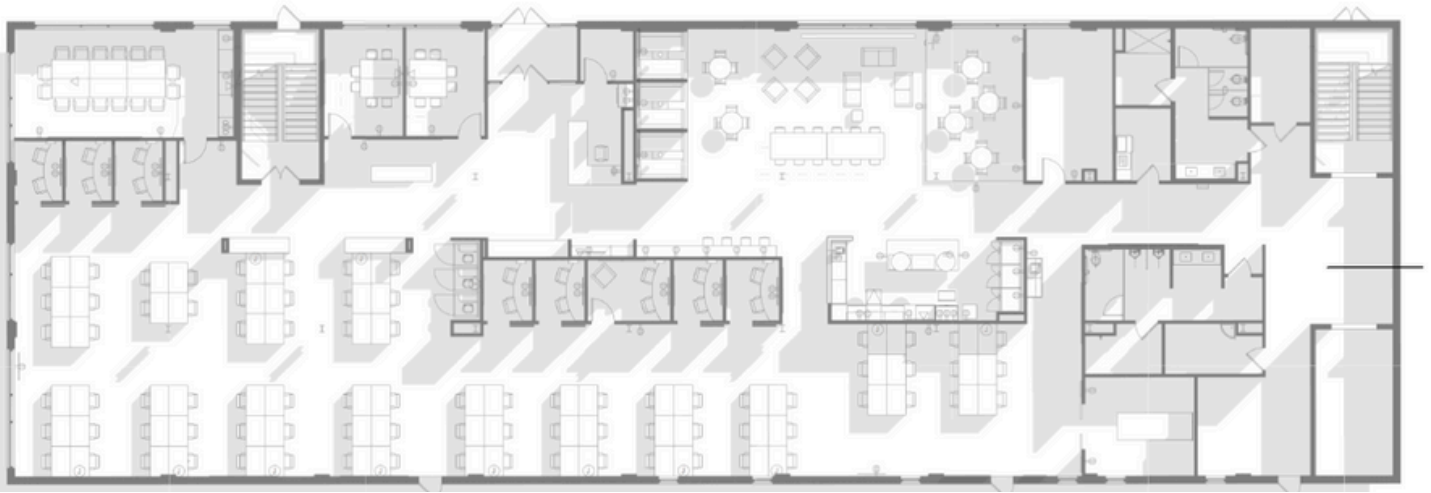
Property Highlights

- A true work-play opportunity just north of Downtown Indianapolis
- Steps from the Monon Trail with quick access to new Box Factory development, Bottleworks District, and Mass Ave
- Directly across the street from Provider Cafe, Soley Wine Bar, and other popular neighborhood restaurants and retailers
- Adjacent to the Onyx + East townhomes, and several apartment developments
- Dedicated free surface parking lot

Traffic Count

- E 16th Street - 9,311 VPD
- I-70 - 48,890 VPD





1st Floor - 10,202 RSF

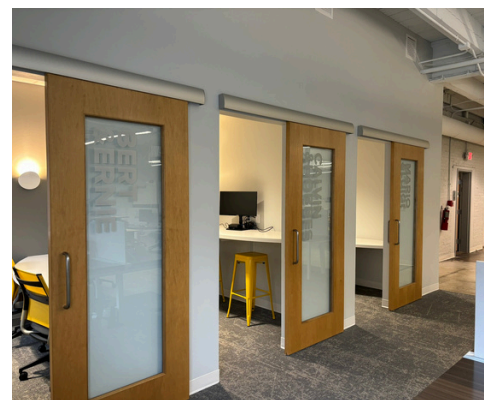
- 1 large break area/multipurpose gathering area
- 8 offices
- 82 workstations
- 1 large conference room - 14 seats
- 2 small conference rooms
- 3 storage rooms
- 1 data room
- 1 mothers room
- Private restrooms/lockers

1

- 1

●

- 6



Phil Mosey

phil.mosey@jll.com

+1 (317) 413-2203