



152 Ridge Road,  
Dayton, New Jersey

Ridge Road / NJ-522

# For lease

211,533 SF Industrial facility available immediately  
Divisible





152 Ridge Road, Dayton, New Jersey

# Building specifications

**Total building SF:** 211,533 SF

**Available SF:** 211,533 SF - Divisible

**Acreage:** 13.172 acres

**Office SF:** 5,704 SF

**Ceiling height:** 27'-30' clear

**Dock doors:** 34 loading doors

**Sprinkler system:** ESFR

**Column spacing:** 42'w x 42'd

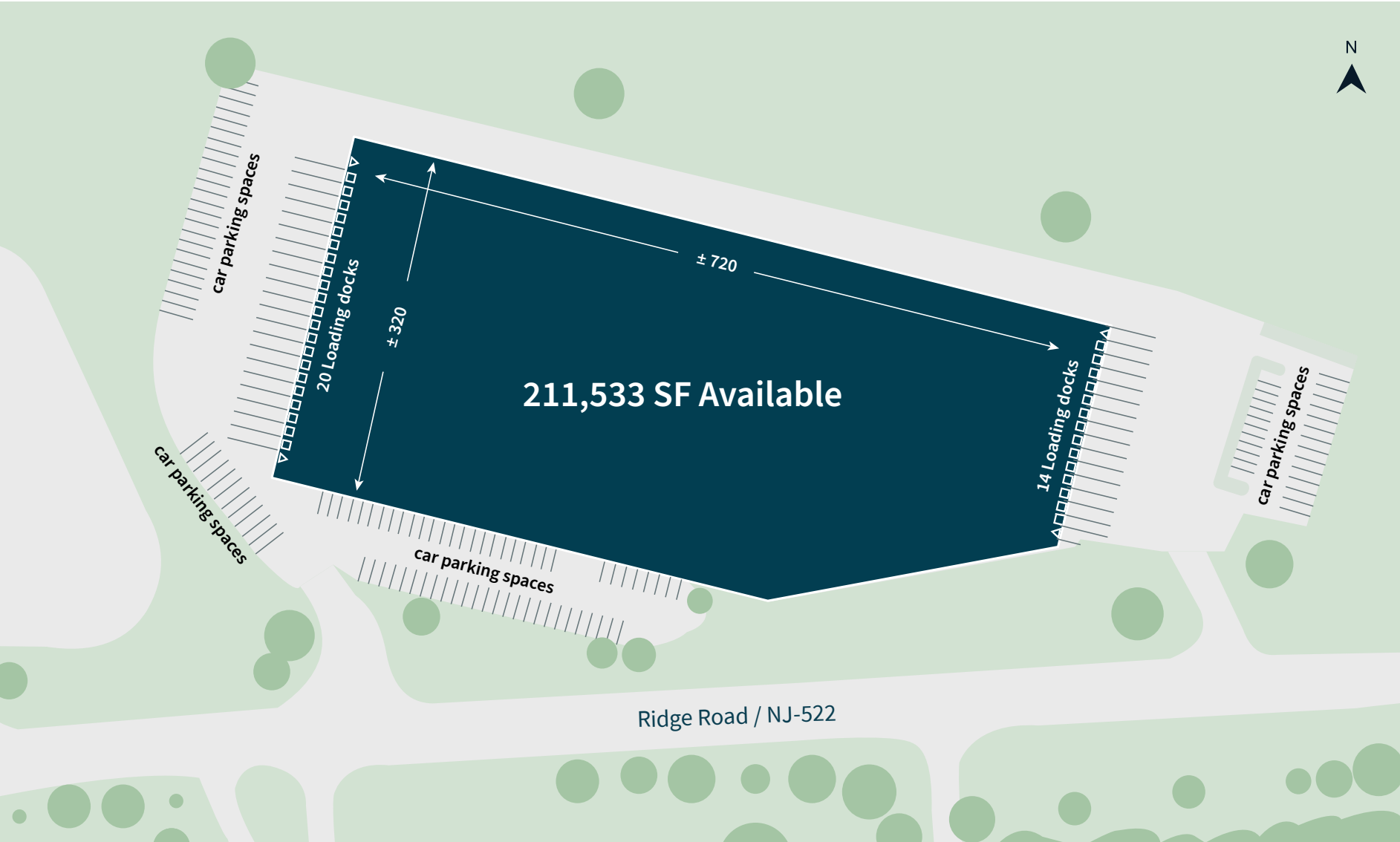
**Electric service:** 1,600 amps

**Car parking:** 121 spaces

**Availability:** Immediate occupancy

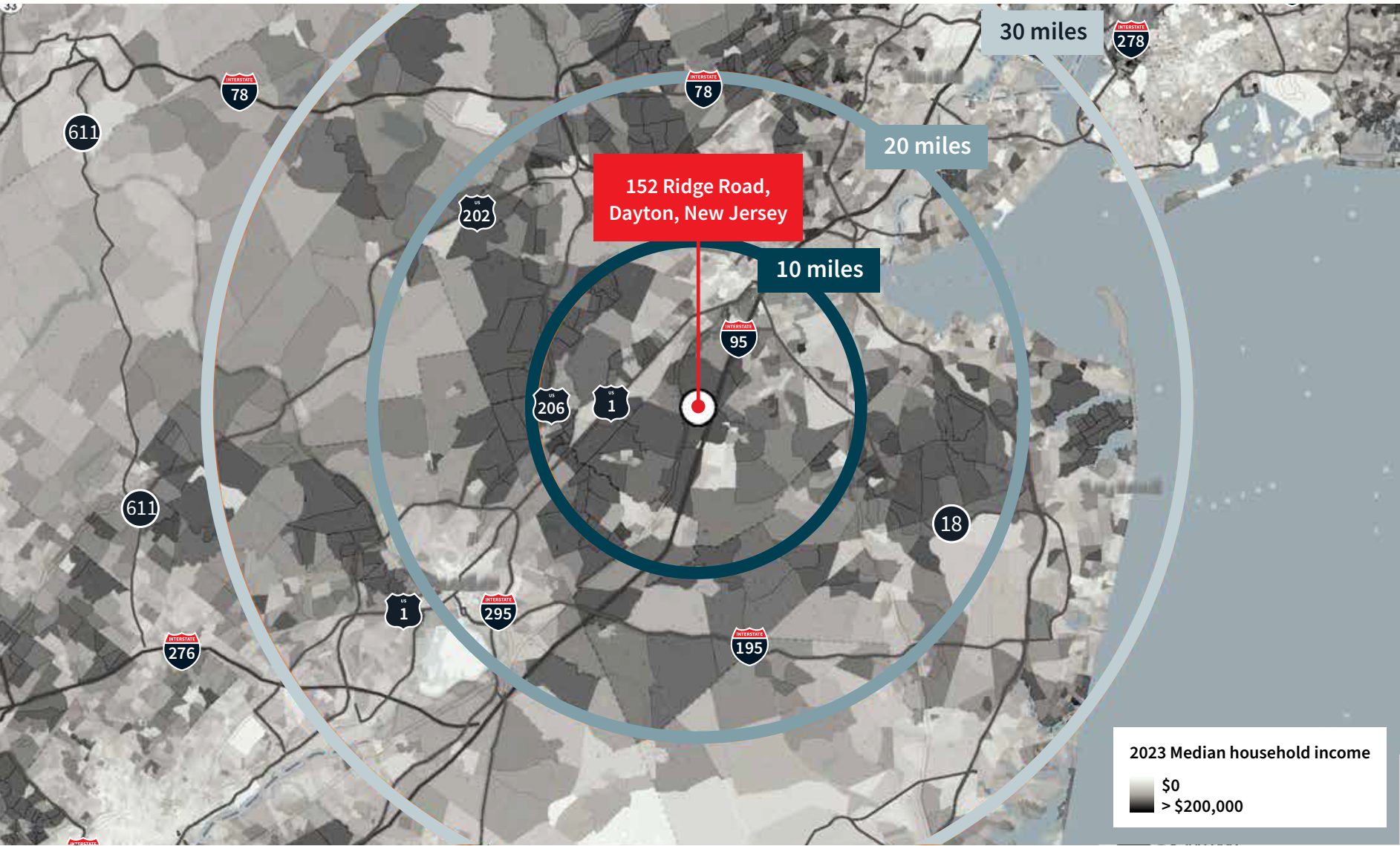


Site plan



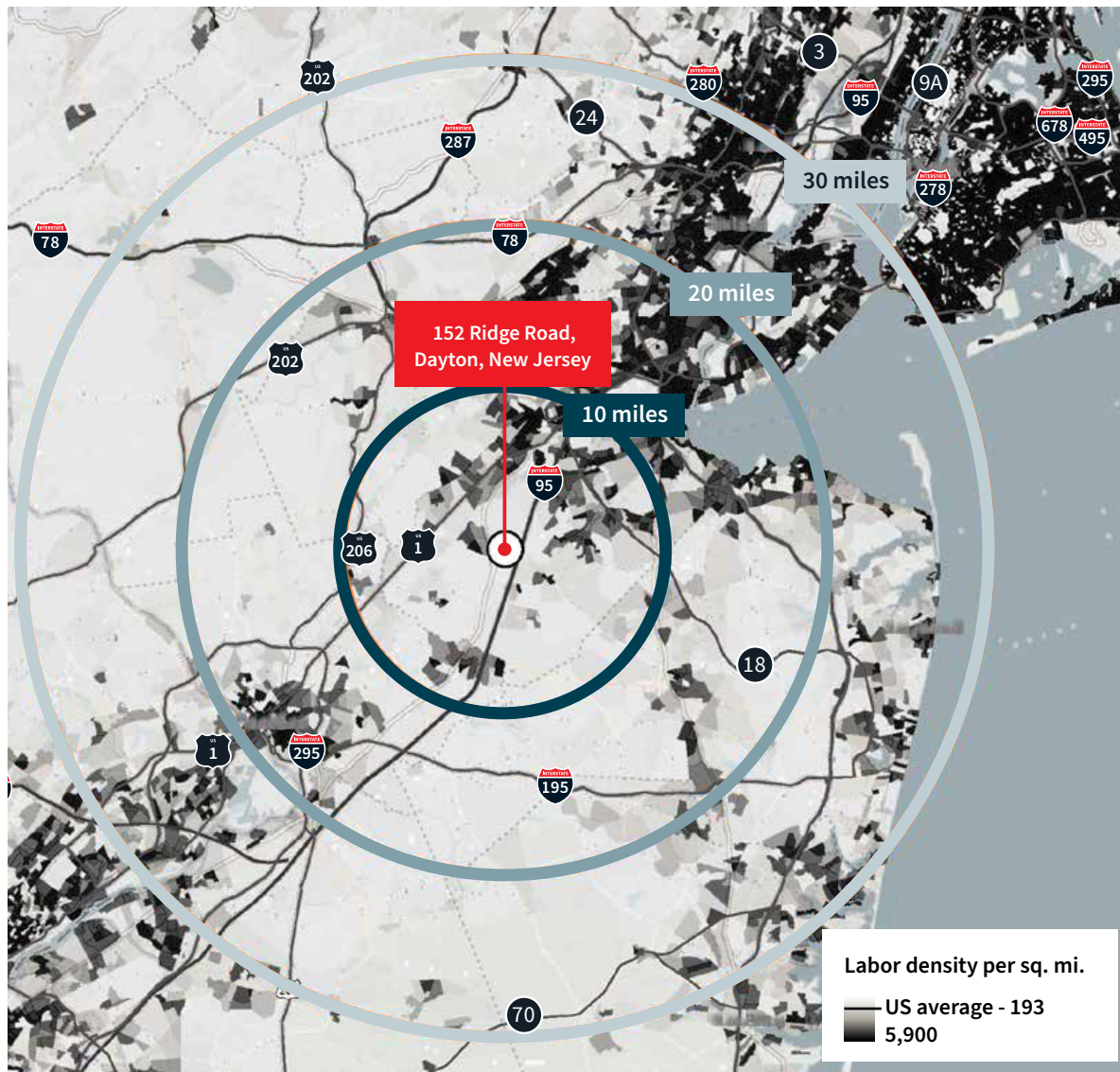


Median household income



152 Ridge Road, Dayton, New Jersey

## Labor supply and workforce



## Demographics



### Total population

10 min | 579,061  
20 min | 3,505,722  
30 min | 4,969,599



### Total labor force

10 min | 312,666  
20 min | 1,873,382  
30 min | 2,576,018



### Transportation/ Warehouse labor

10 min | 18,162  
20 min | 157,690  
30 min | 164,234



### Median household income

(US Median is \$72,603)

10 min | \$110,048  
20 min | \$106,036  
30 min | \$96,791



### Median disposable income

(US Median is \$58,809)

10 min | \$91,852  
20 min | \$87,603  
30 min | \$78,342



### Median hourly warehouse salary

(US Median is \$18.52)

10 min | \$18.11  
20 min | \$18.23  
30 min | \$18.47



### Blue-collar

(US is 22%)

10 min | 15%  
20 min | 17%  
30 min | 17%



### Unemployment rate

(US is currently 4.1%  
per Oct. '24)

10 min | 3.9%  
20 min | 5.5%  
30 min | 4.5%

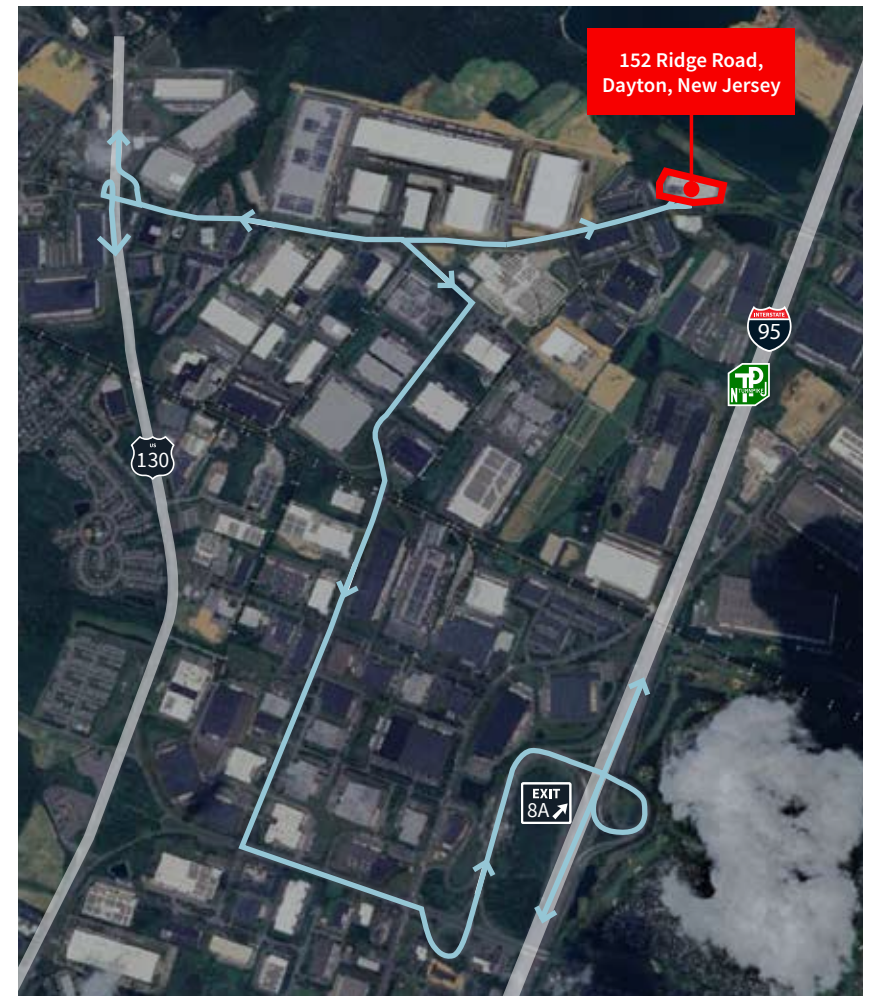
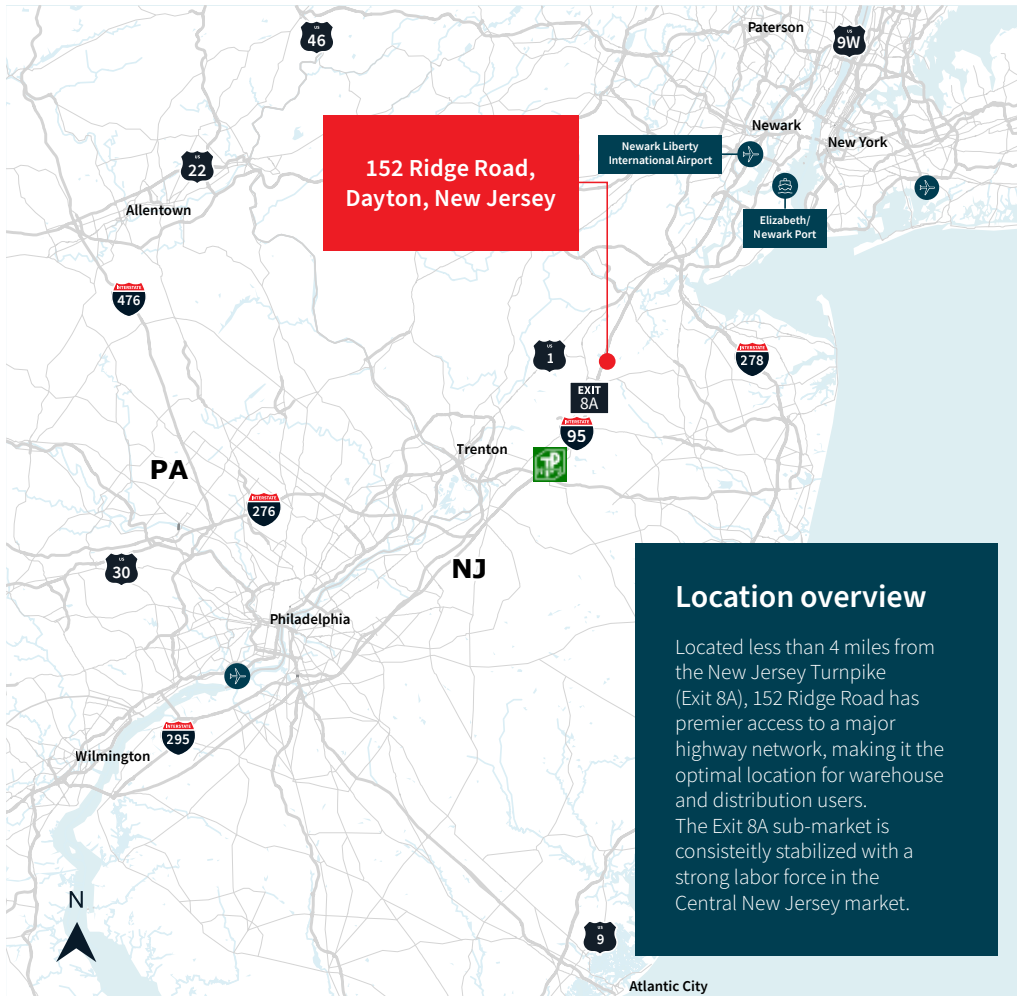


### Unemployment rate

(US is currently 4.1% per Oct. '24)

10 min | 3.9%  
20 min | 5.5%  
30 min | 4.5%





JLL

**Nate Demetsky**  
*Vice Chairman*  
[nate.demetsky@jll.com](mailto:nate.demetsky@jll.com)  
 +1 609 672 3163

**Gary Politi**  
*Executive Managing Director*  
[gary.politi@jll.com](mailto:gary.politi@jll.com)  
 +1 908 391 9059



**About JLL** For over 200 years, JLL (NYSE: JLL), a leading global commercial real estate and investment management company, has helped clients buy, build, occupy, manage and invest in a variety of commercial, industrial, hotel, residential and retail properties. A Fortune 500® company with annual revenue of \$20.8 billion and operations in over 80 countries around the world, our more than 111,000 employees bring the power of a global platform combined with local expertise. Driven by our purpose to shape the future of real estate for a better world, we help our clients, people and communities SEE A BRIGHTER WAY<sup>SM</sup>. JLL is the brand name, and a registered trademark, of Jones Lang LaSalle Incorporated. For further information, visit [jll.com](http://jll.com).