

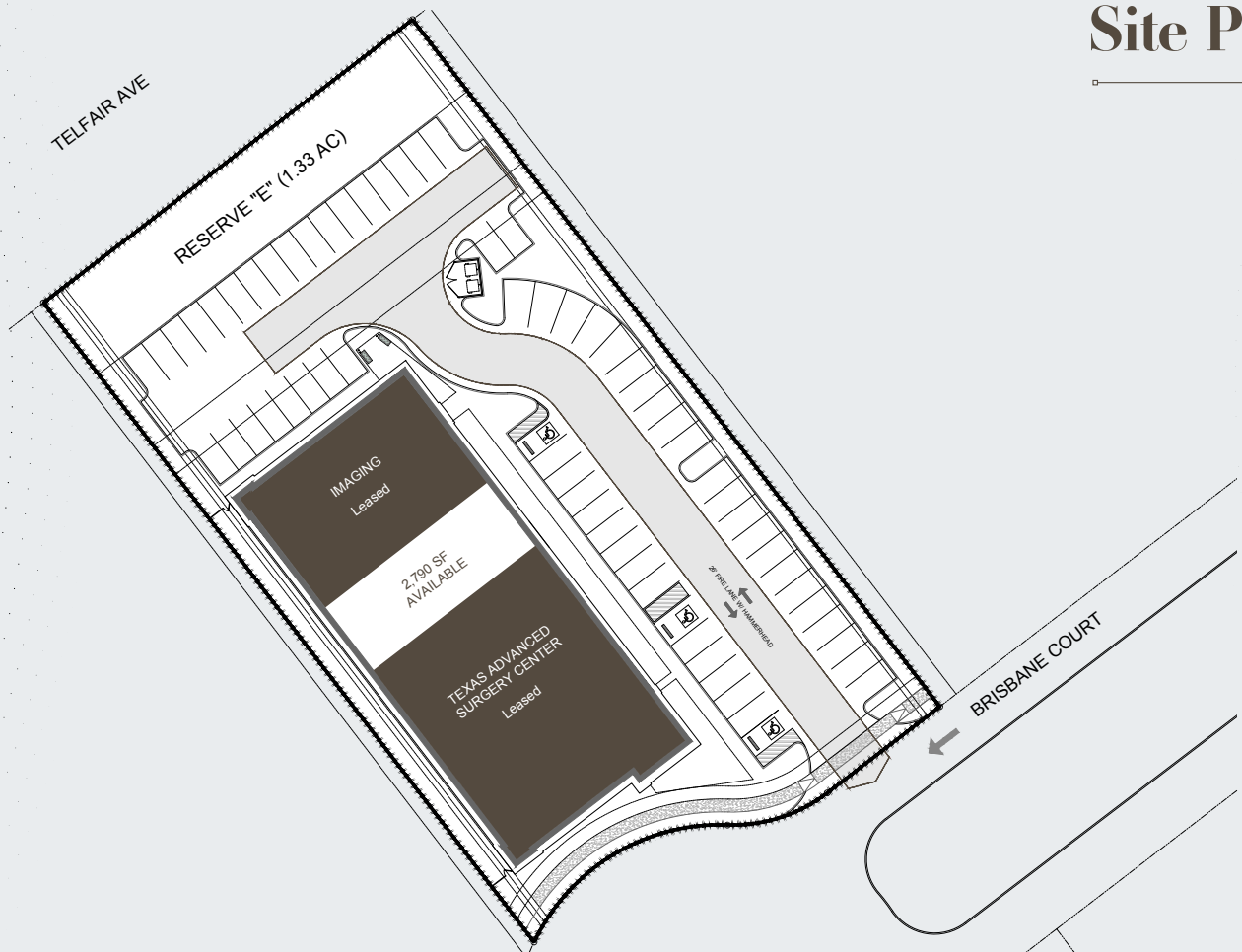
Telfair Medical Court

6927 Brisbane Court Sugar Land, TX 77479



Leasing Opportunity for Class A Medical Office

Site Plan



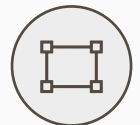
New
construction



Total
16,100 SF



2,790 SF available
shell condition



Monument
signage available

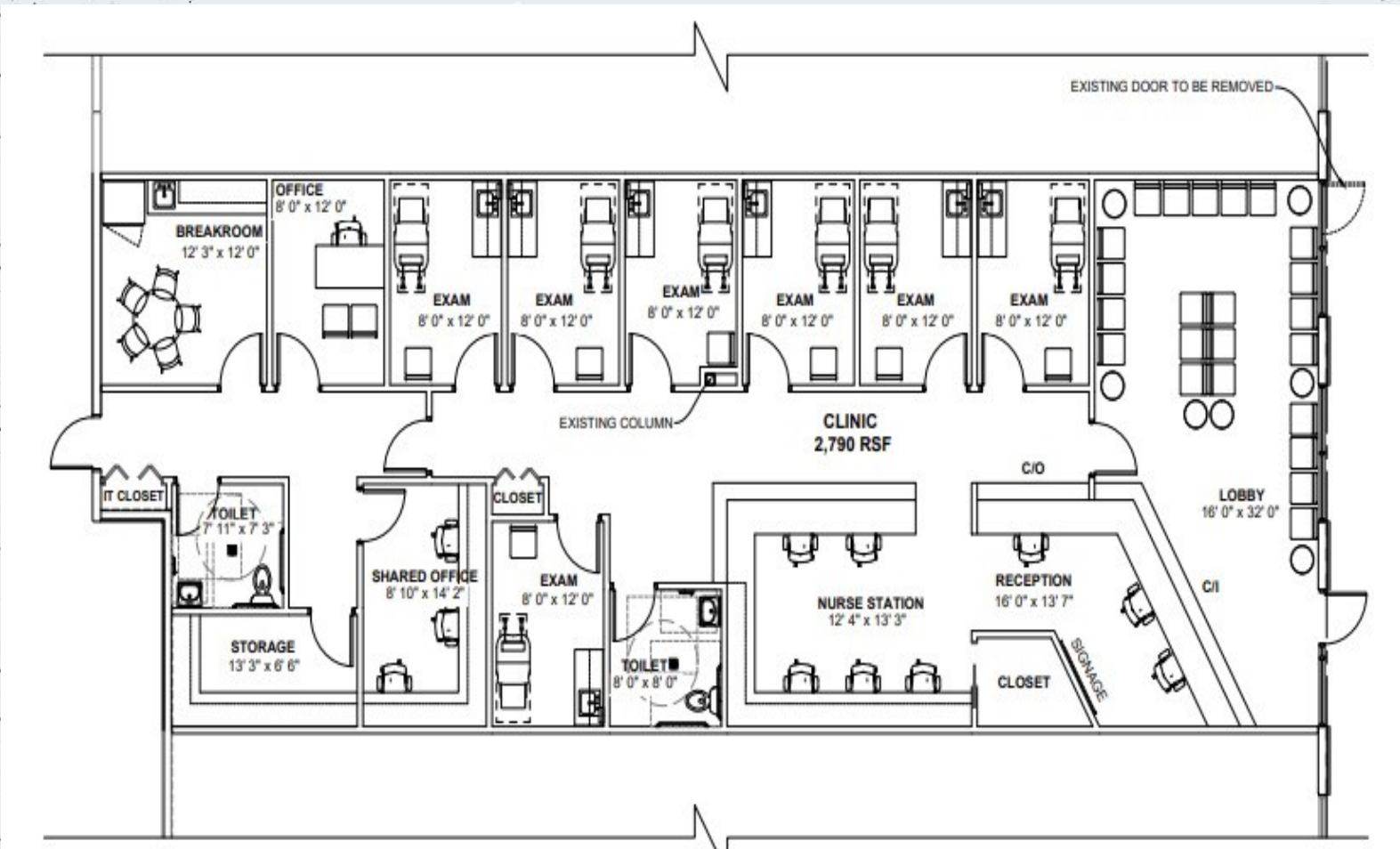


Contact broker
for pricing

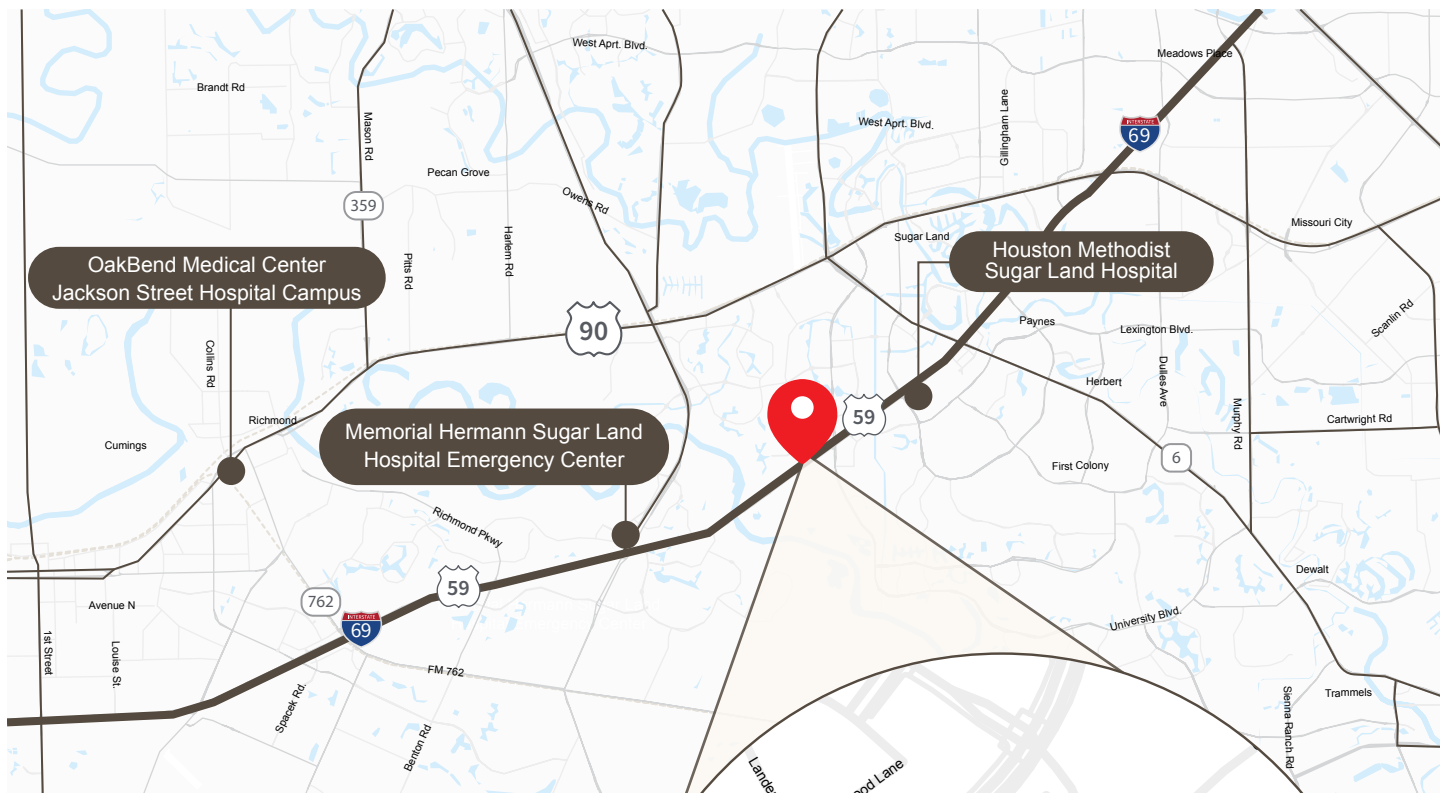


Lower
OPEX

Proposed Clinical Suite



Location



Nearby Medical

1. OSD Surgery Center
2. One Step Diagnostic Sugar Land
3. Gentle Primary Care Sugar Land
4. Capital Medical Associates
5. Allure Aesthetics
6. Revital Laser & Skin Clinic
7. Gentle Pediatrics, PLLC. Pediatrician Sugar Land



Demographics

344,018

population

2.9

average
household
size

\$92,611

median
household
income

38.5

median age

62%

commerical
insurance

50%

bachelor's/
grad/prof
degree

Within 15-minute drive



FOR LEASE

6927 Brisbane Court, Sugar Land, TX 77479

For leasing information, contact:

Madeline Cleary
Healthcare Advisory
713 888 4007
madeline.cleary@jll.com



Although information has been obtained from sources deemed reliable, JLL does not make any guarantees, warranties or representations, express or implied, as to the completeness or accuracy as to the information contained herein. Any projections, opinions, assumptions or estimates used are for example only. There may be differences between projected and actual results, and those differences may be material. JLL does not accept any liability for any loss or damage suffered by any party resulting from reliance on this information. If the recipient of this information has signed a confidentiality agreement with JLL regarding this matter, this information is subject to the terms of that agreement. ©2024 Jones Lang LaSalle Brokerage, Inc. All rights reserved.