



**For Sublease**

# 116 E Altamonte Drive

Suite 1006, Altamonte Springs, FL

 [Click to View Virtual Tour](#)



# Property Features

116 Altamonte Dr • Suite 1006 • Altamonte Springs, FL



## The Property

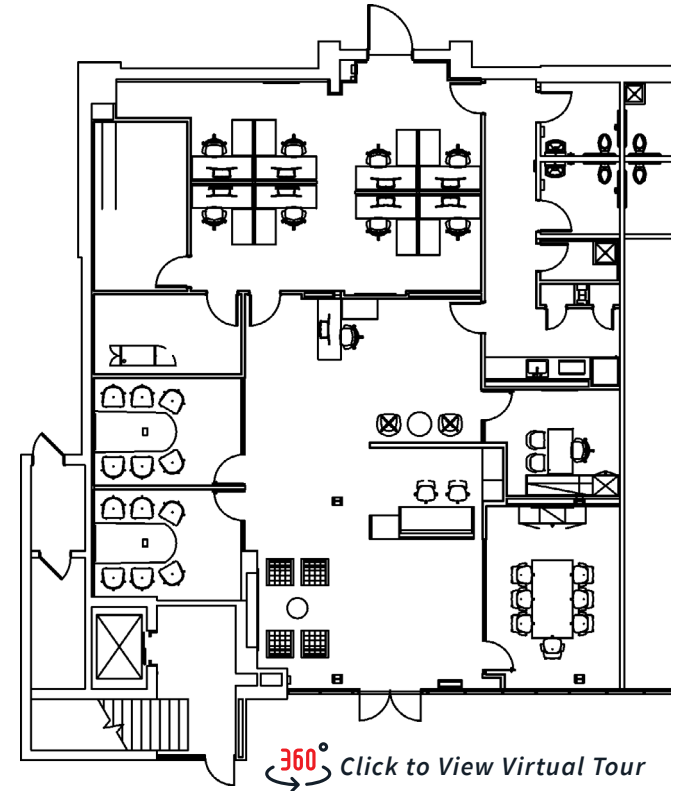
- 6,184 s.f. of retail shadow-anchored by a shopping center with national tenants such as Ross, Burlington, T-Mobile, and Total Wine
- Great visibility to the nearly 60,000 cars per day on Semoran Blvd
- Sublease available through September 30<sup>th</sup>, 2029
- Asking rate - \$27.95/RSF Gross

## The Location





- Close proximity to I-4, great access heading east on Semoran Blvd
- Located in Altamonte Springs and surrounded by both strong daytime business population and strong residential population
- Strong retail area, less than a mile to Altamonte Mall and a great list of other national tenants.

## Floor Plan

- Suite 1006
- 3,111± s.f.
- 2 bathrooms



## Demographics

		1 Mile	3 Miles	5 Miles
	<b>Population:</b>	17,011	97,765	238,820
	<b>Households:</b>	8,436	43,313	100,936
	<b>Avg. HH Income:</b>	\$88,264	\$103,040	\$108,933
	<b>Median Age:</b>	38.3	39.1	40.1

Source: ESRI 2024



**238,820**  
POPULATION  
5 MILE RADIUS



**\$108,933**  
AVG HH INCOME  
5 MILE RADIUS



**100,936**  
HOUSEHOLDS  
5 MILE RADIUS



**40.1**  
MEDIAN AGE  
5 MILE RADIUS



# Area Overview

116 Altamonte Dr • Suite 1006 • Altamonte Springs, FL



## Contact



**Caleb Powell**  
Associate, Retail Advisory Services  
+1 386 847 6672  
caleb.powell@jll.com

**Orlando Office**  
250 S. Orange Avenue, Suite 700  
Orlando, FL 32801  
t: 407.982.8550