

THE PLAZA

at Scripps Northridge

12121 SCRIPPS SUMMIT DRIVE SAN DIEGO, CA 92131



Jones Lang LaSalle Brokerage, Inc. RE license #01856260

4 STORY CLASS A OFFICE BUILDING

The Plaza at Scripps Northridge is a four-story Class A office project located minutes from the SR-52 and S-56 connecting 1-15 to I-5 and the coast. With upgraded amenities and more walkable retail amenities than any other project in Central San Diego, The Plaza at Scripps Northridge is ideal for tenants looking for unmatched “work-life balance.”



PROPERTY FEATURES



114,400 SF Class A
Office Building



New Modern Lobby



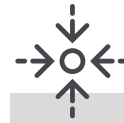
Restaurants & Retail
within Walking Distance



4.0/1,000
Parking Ratio



Upgraded
Outdoor Seating



Central San Diego Location along I-15 Corridor
with Immediate access at Scripps Poway Ranch



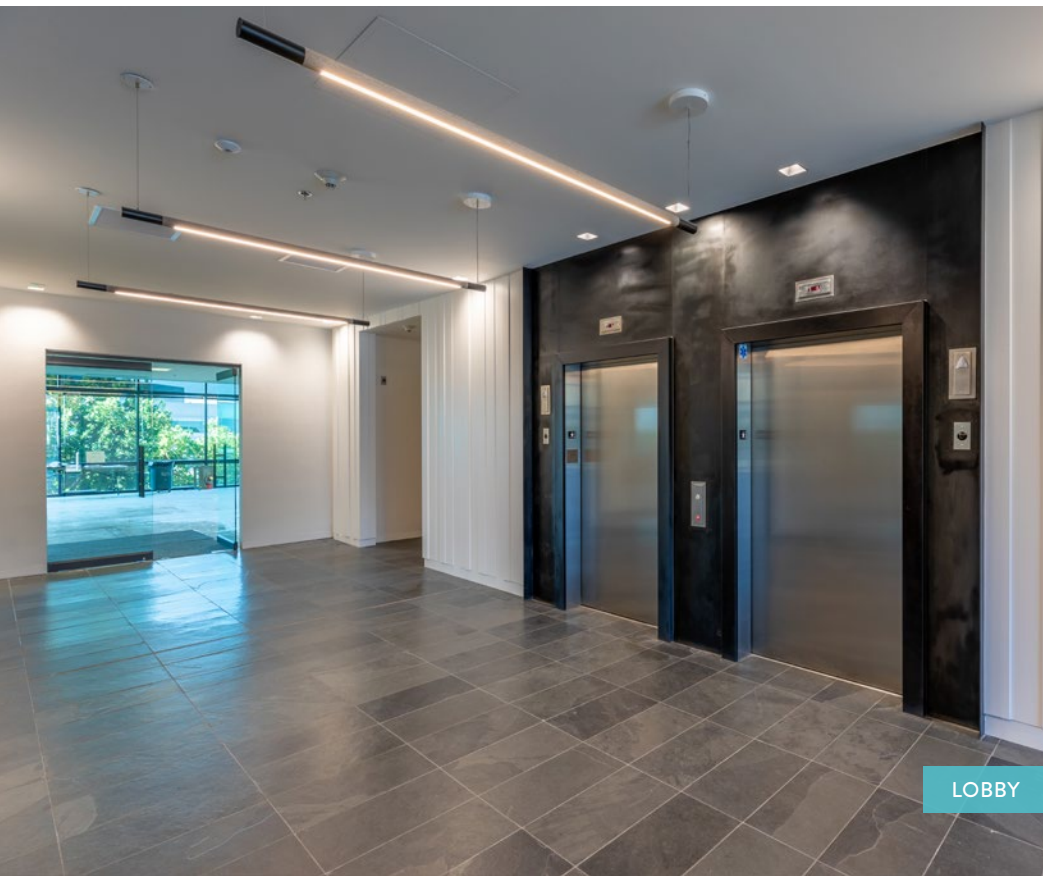
Fitness Center
with Showers



Covered Parking &
Dual Fiber Loop



Minutes from SR-52 & SR-56, Connecting
I-15 to I-5 and the Coast



FIRST FLOOR

SUITE 170

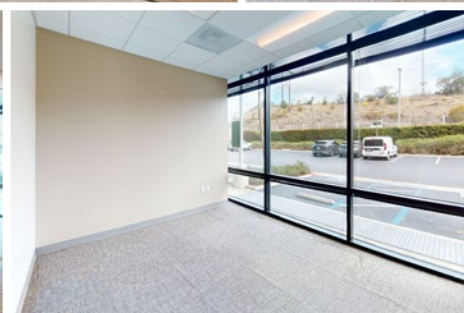
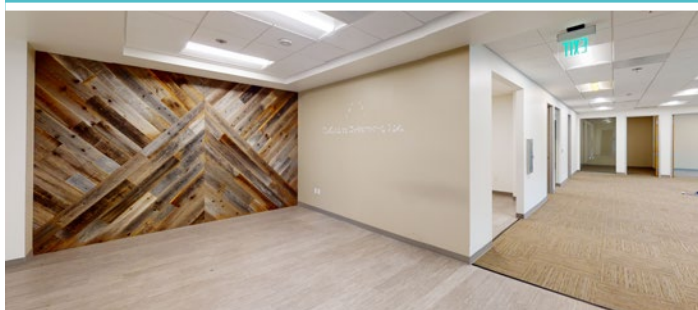
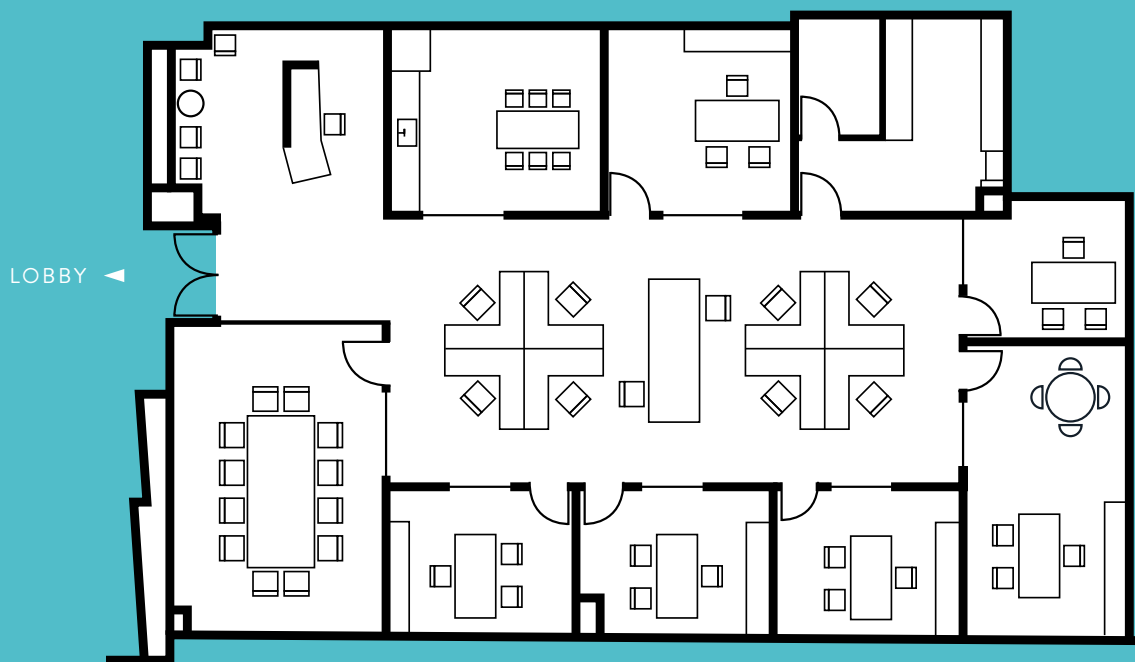
3,613 RSF

Available now

- › Reception area
- › 5 private offices
- › Conference room
- › Window-line
- › Executive office / huddle room
- › Break area
- › Server / storage room
- › Open office area



SCRIPPS SUMMIT DRIVE



SECOND FLOOR

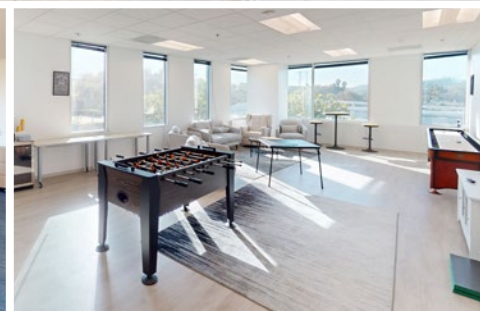
SUITE 200

30,756 RSF

Full floor available with 90-days notice

- › Reception area
- › 23 private offices
- › 4 conference rooms
- › Break area
- › Mostly open office with 131 workstations
- › Brand new space with high end finishes including laminate wood floors
- › Exposed ceilings
- › All new FF&E
- › Great natural light and views
- › 3 phone rooms
- › 2 print / production areas
- › Private restroom
- › Above market ceiling heights

SCRIPPS SUMMIT DRIVE



AREA AMENITIES



THE PLAZA

at Scripps Northridge

TIM OLSON

+1 858 410 1253
tim.olson@jll.com
RE license #01364117

JAY ALEXANDER

+1 858 410 1188
jay.alexander@jll.com
RE license #01019910

GREG MOORE

+1 858 410 6367
greg.moore@jll.com
RE license #02068852

CARLY ROSS

+1 858 352 2911
carly.ross@jll.com
RE license #02157346



Although information has been obtained from sources deemed reliable, neither Owner nor JLL makes any guarantees, warranties or representations, express or implied, as to the completeness or accuracy as to the information contained herein. Any projections, opinions, assumptions or estimates used are for example only. There may be differences between projected and actual results, and those differences may be material. The Property may be withdrawn without notice. Neither Owner nor JLL accepts any liability for any loss or damage suffered by any party resulting from reliance on this information. If the recipient of this information has signed a confidentiality agreement regarding this matter, this information is subject to the terms of that agreement. ©2025. Jones Lang LaSalle IP, Inc. All rights reserved.