



Available

5,000 SF w/elevator access



2301 N. Meridian Street Indianapolis, IN 46208

Situated in a prominent commercial district, this modern and well-maintained building boasts easy access to Interstate 65, making it an attractive location for diverse businesses. The property offers versatile spaces suitable for office, medical, and retail use, catering to a wide range of professional needs in a contemporary setting.

The building's prime location on the recently expanded IndyGo Redline, with a convenient stop right out front, provides excellent connectivity to Indianapolis' Central Business District. This strategic positioning also places the property in close proximity to the transformative development of Indiana University Health's new hospital campus and emerging residential areas, situating it at the heart of the city's evolving urban landscape.

James Gruesser

Vice President

james.gruesser@jll.com

+1 317 414 0313

Tim Murray

Vice President

tim.murray@jll.com

+1 317 810 7363

jll.com

Jones Lang LaSalle Brokerage, Inc., a licensed real estate broker



Available

5,000 SF w/elevator access

[Photos](#)

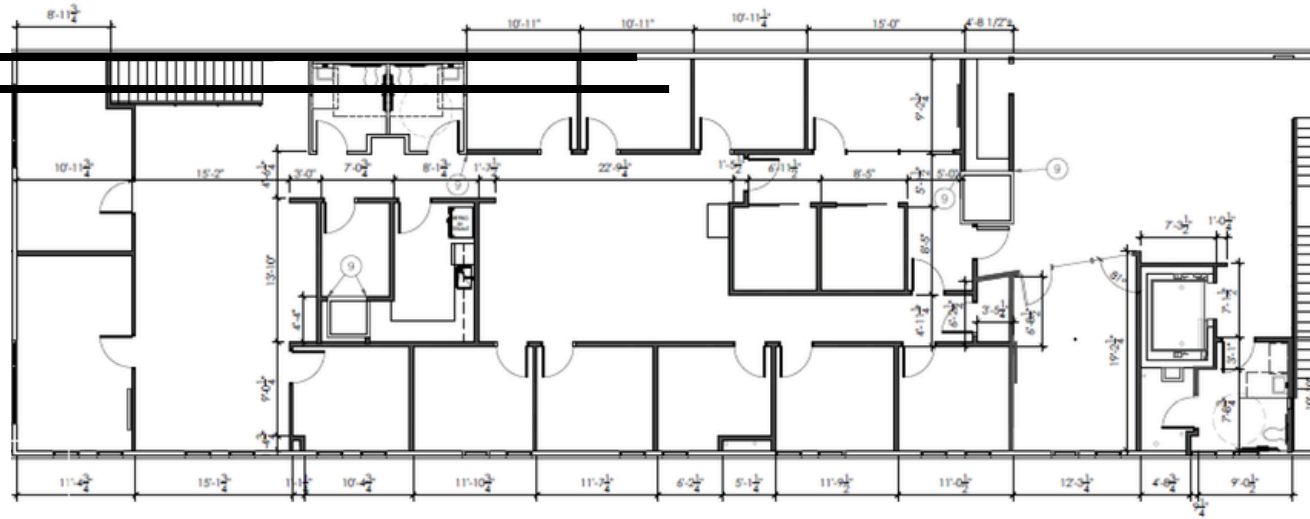
[Floor plan](#)

Property highlights

- 2nd floor built out for office space
- Elevator access to 2nd floor
- Dedicated entrance on the south side of the building
- Abundance of natural light through windows
- Ample parking with a shared lot - 22 spaces
- Great visibility; easy access
- +/- 18,782 VPD via N. Meridian St & E. 23rd St
- 24/7 access
- Zoning: MU-2



2nd floor | 5,000 sf



James Gruesser

Vice President

james.gruesser@jll.com

+1 317 414 0313

Tim Murray

Vice President

tim.murray@jll.com

+1 317 810 7363

jll.com

Jones Lang LaSalle Brokerage, Inc., a licensed real estate broker