



# Retail For Lease

553 Broadway, Westwood, NJ

**2,980 SF with Drive Thru**

**Craig Parcells**

*Senior Vice President*

[craig.parcells@jll.com](mailto:craig.parcells@jll.com)

M: +1 201 618 7223





# Property highlights

- Freestanding retail space with drive thru for lease located in Westwood, NJ
- Former Capital One bank
- 5-minute walk to NJ Transit Westwood station
- High visibility located on the corner of Irvington Street and Broadway
- [Matterport Link](#)
- [Zoning Link](#)
- **Asking rent:** Upon request

## Neighborhood tenants

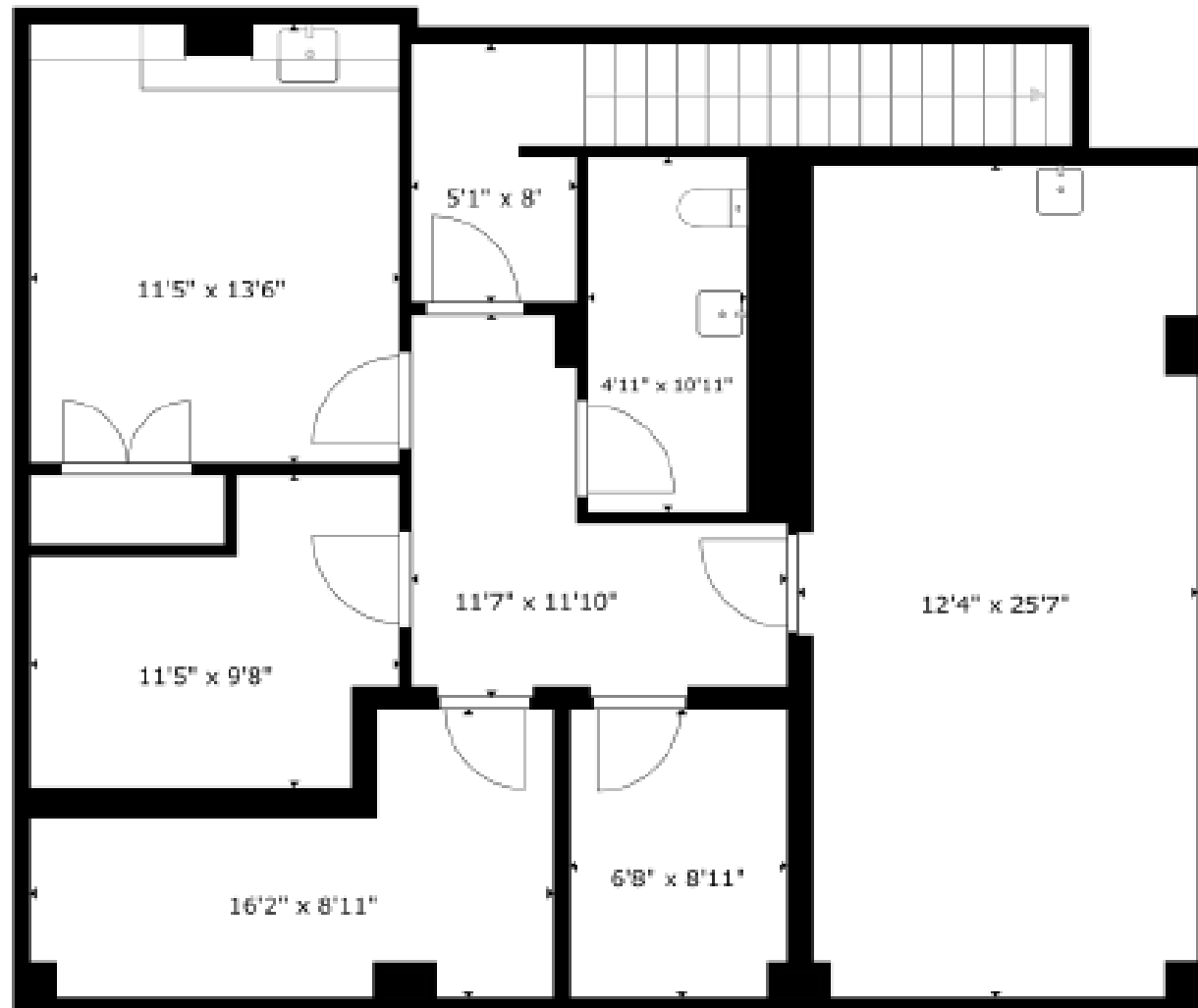
♥ **CVS pharmacy**



# Floor Plan – Ground Floor



# Floor Plan – Basement



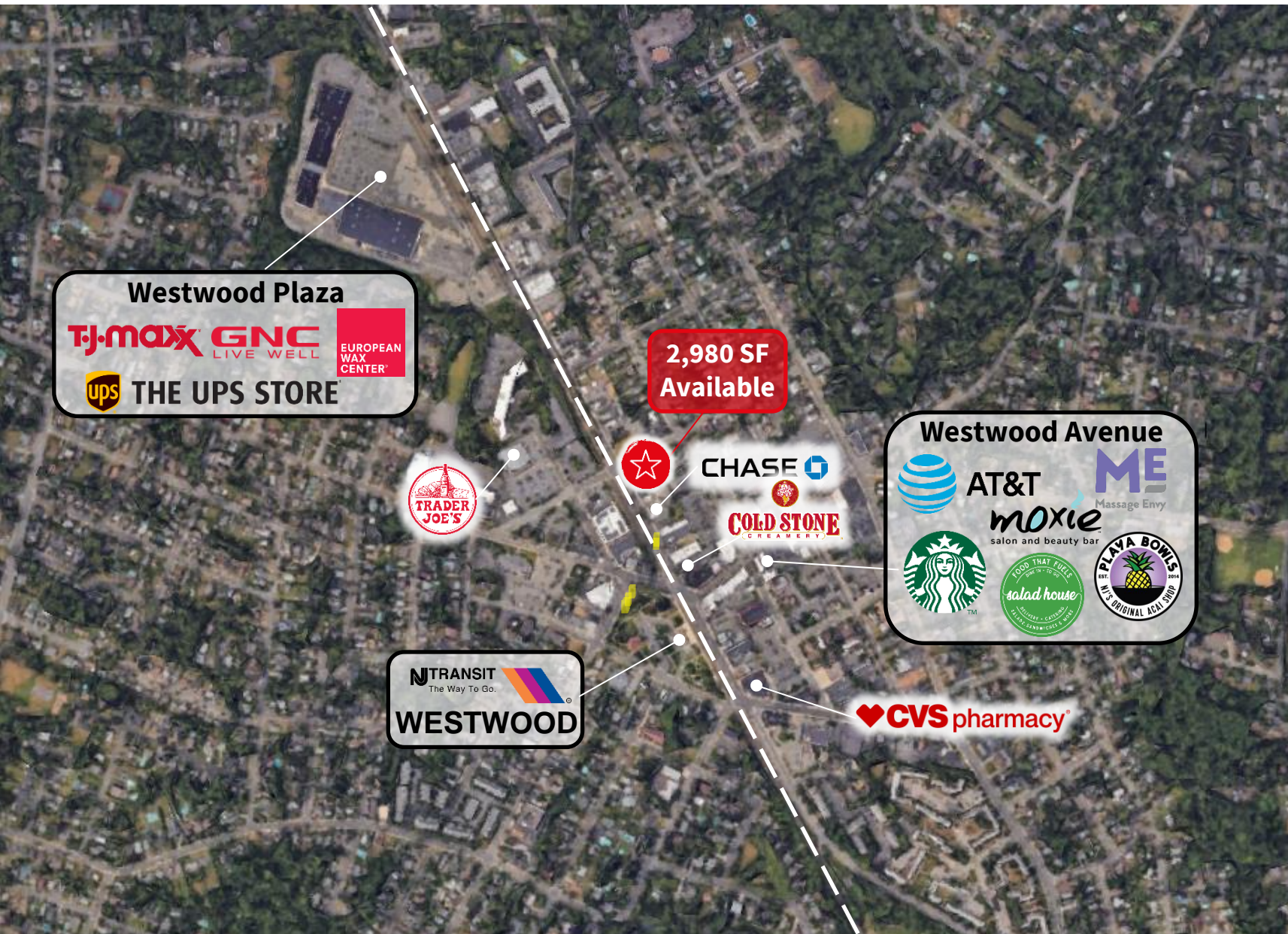


# Photos





# Market aerial



## Demographics



**78,205**  
Population



**\$148,059**  
Med. HH Income



**32,621**  
Employees



**4,726**  
Businesses

*Demographics taken within 3 miles  
Source: CoStar 2024*

**Craig Parcels**  
Senior Vice President  
[craig.parcels@jll.com](mailto:craig.parcels@jll.com)  
M: +1 201 618 7223

