



For Lease

549 N Wymore Road
Maitland, FL 32751

1,255 SF & 1,281 SF Available

 **JLL** SEE A BRIGHTER WAY

Property Highlights



Two-story office building built in 2001



Conveniently situated in Maitland just off Maitland Blvd and I-4



2 Suites available for lease



On-site ownership and management



Ample free parking surrounding building



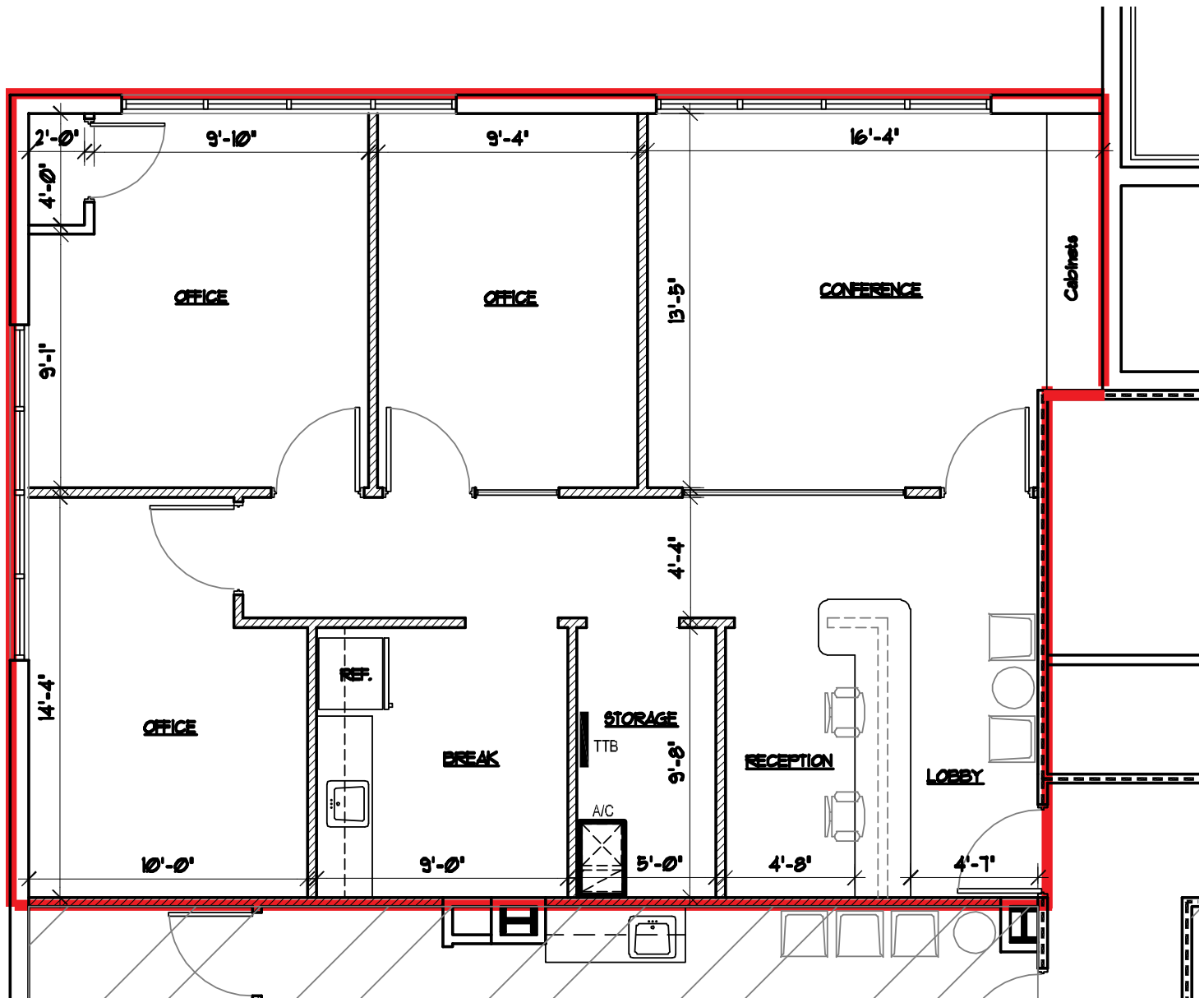
\$28.00/SF Modified Gross



Available immediately



Floorplan
Suite 106: ± 1,255 SF



The floor plan shows a building layout with a central area outlined in red. The red-outlined area contains a waiting area, five offices, a server room, and a corridor. The dimensions for the red-outlined area are 11'-2" wide by 11'-10" deep. The waiting area is 11'-2" wide and 8'-3" deep. Office 1 is 8'-3" wide and 8'-3" deep. Office 2 is 8'-3" wide and 8'-3" deep. Office 3 is 12'-10" wide and 11'-0" deep. Office 4 is 11'-0" wide and 11'-0" deep. Office 5 is 12'-6" wide and 11'-0" deep. The server room is 8'-6" wide and 11'-10" deep. The corridor is 5'-5" wide. The building has a total width of 3'-11" and a total depth of 3'-11". The building is labeled 'ELECTRICAL RM.' and 'SERVER'.

Location Highlights



- Convenient access to Interstate 4 with new ramps recently completed as part of the I-4 Ultimate Project
- Close proximity to restaurants and RDV Sportsplex

JLL.com

John Worrell, CCIM
Senior Vice President
john.worrell@jll.com
+1 321 684 9240

Jamie Barati, SIOR, CCIM
Senior Vice President
jamie.barati@jll.com
+1 407 930 1803

Although information has been obtained from sources deemed reliable, neither Owner nor JLL makes any guarantees, warranties or representations, express or implied, as to the completeness or accuracy as to the information contained herein. Any projections, opinions, assumptions or estimates used are for example only. There may be differences between projected and actual results, and those differences may be material. The Property may be withdrawn without notice. Neither Owner nor JLL accepts any liability for any loss or damage suffered by any party resulting from reliance on this information. If the recipient of this information has signed a confidentiality agreement regarding this matter, this information is subject to the terms of that agreement. ©2025 Jones Lang LaSalle IP, Inc. All rights reserved.