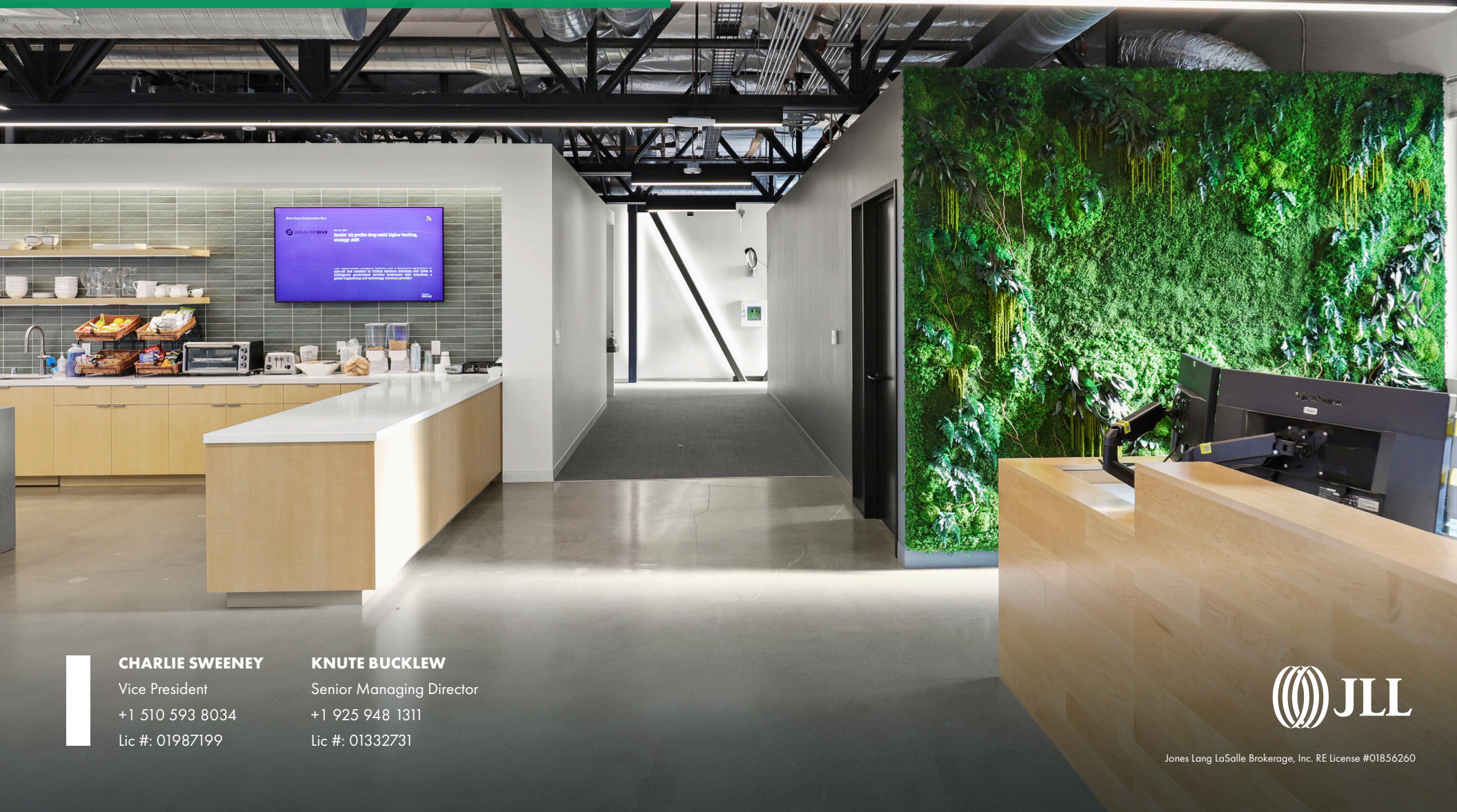


# 2320 Blanding

22,127 RSF Sublease

Term Through October 31, 2032



## CHARLIE SWEENEY

Vice President

+1 510 593 8034

Lic #: 01987199

## KNUTE BUCKLEW

Senior Managing Director

+1 925 948 1311

Lic #: 01332731

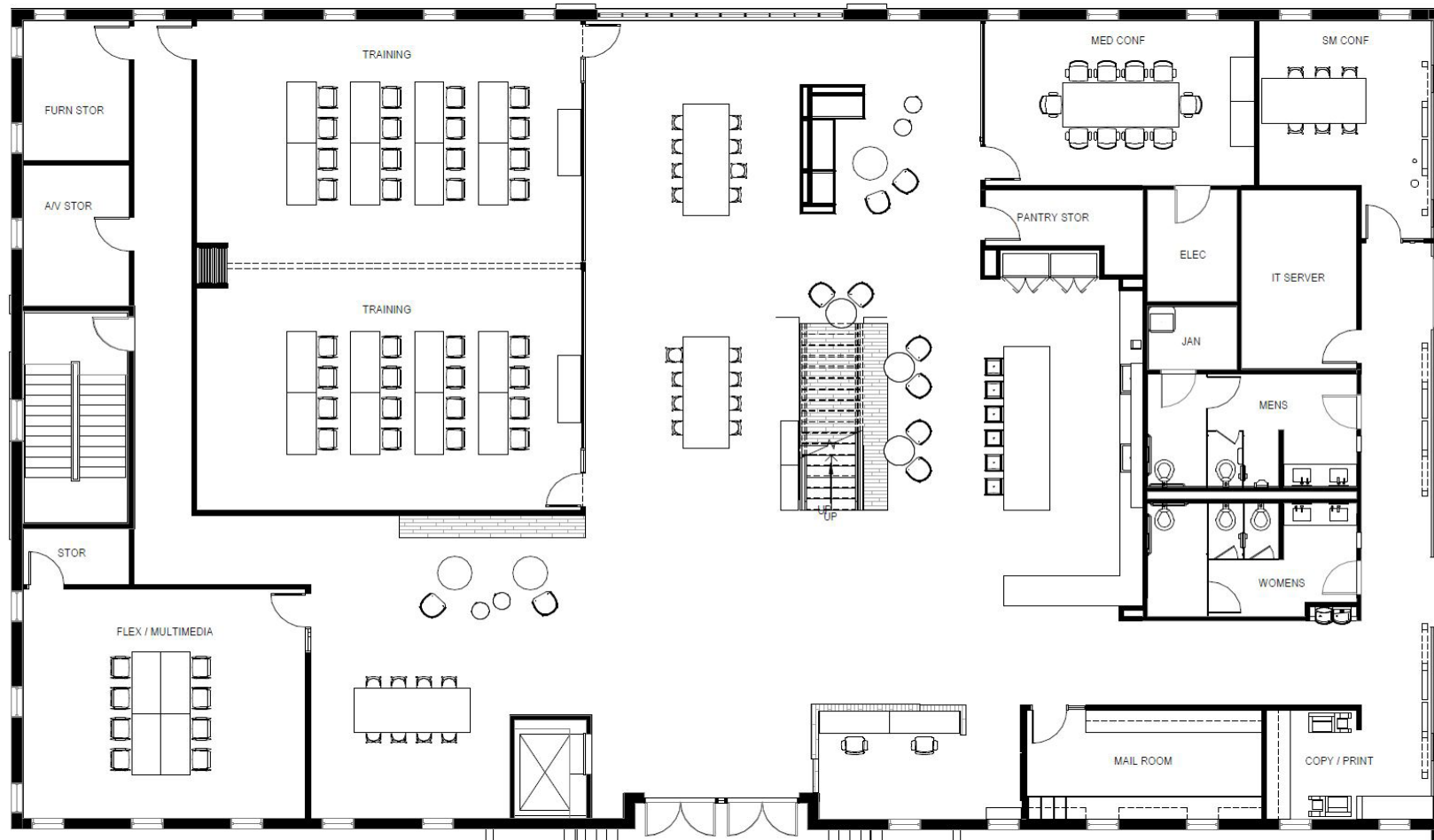


Jones Lang LaSalle Brokerage, Inc. RE License #01856260



# 2320 Blanding

## 2ND FLOOR

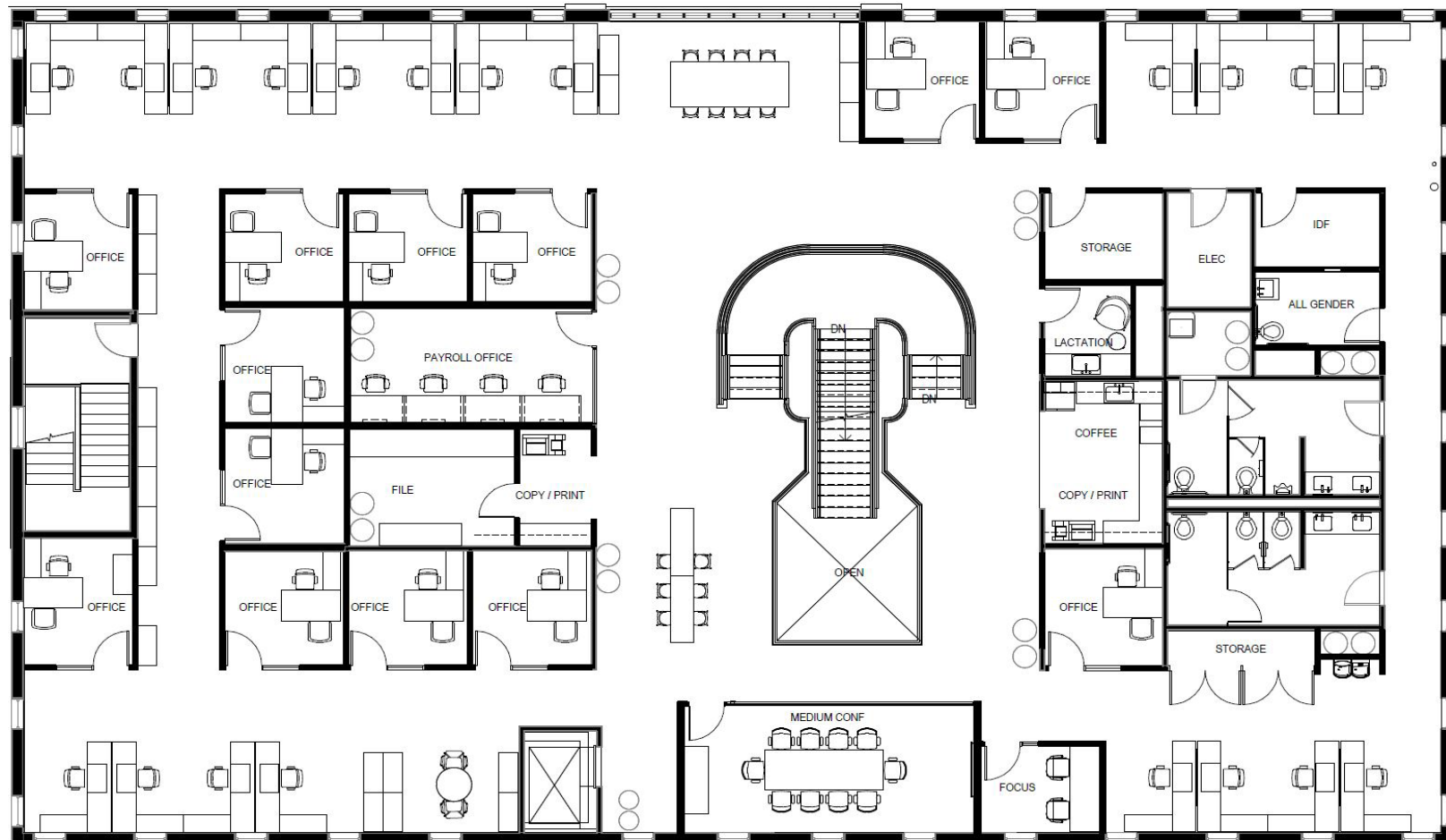


### Sublease Features:

- Creative office buildout
- 16 Private offices
- 4 Conference rooms
- Multiple open office areas
- Open kitchen/ break area
- Rotunda staircase
- Reception area
- Training room
- Free on-site and street parking available
- Great surrounding retail amenities

# 2320 Blanding

## 3RD FLOOR MEZZANINE

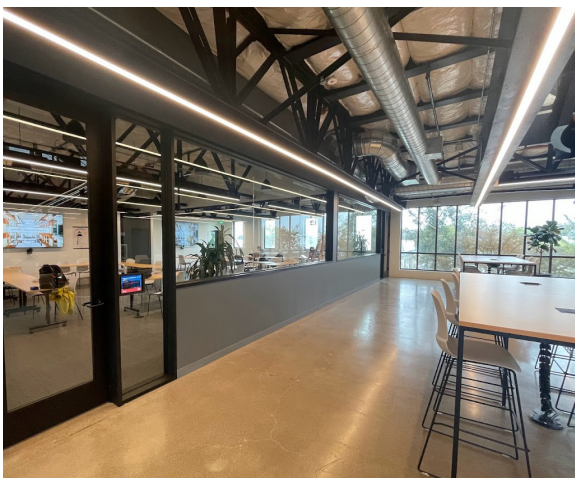
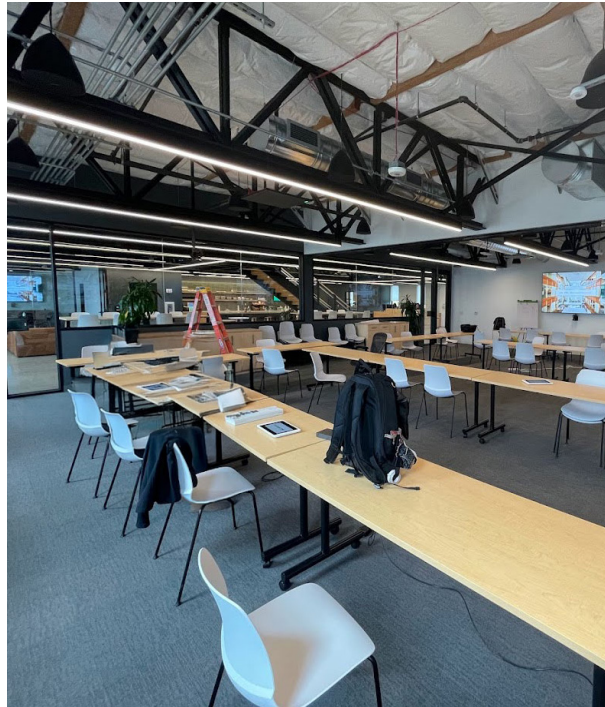


### Sublease Features:

- Creative office buildout
- 16 Private offices
- 4 Conference rooms
- Multiple open office areas
- Open kitchen/ break area
- Rotunda staircase
- Reception area
- Training room
- Free on-site and street parking available
- Great surrounding retail amenities



# 2320 Blanding



Although information has been obtained from sources deemed reliable, JLL does not make any guarantees, warranties or representations, express or implied, as to the completeness or accuracy as to the information contained herein. Any projections, opinions, assumptions or estimates used are for example only. There may be differences between projected and actual results, and those differences may be material. JLL does not accept any liability for any loss or damage suffered by any party resulting from reliance on this information. If the recipient of this information has signed a confidentiality agreement with JLL regarding this matter, this information is subject to the terms of that agreement. ©2025 Jones Lang LaSalle Brokerage, Inc. All rights reserved.