

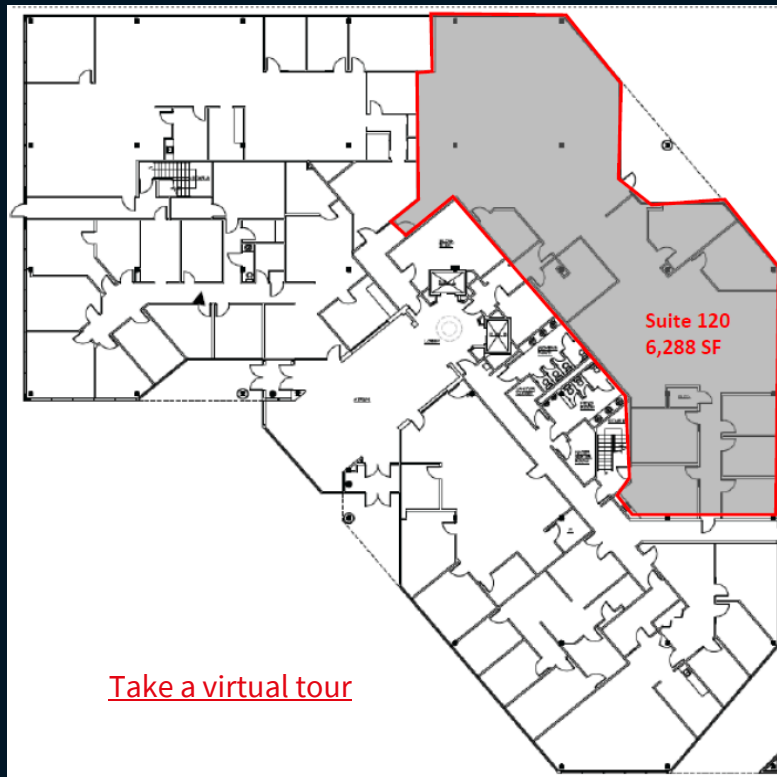
For lease

Westfield Corporate Center
6,288 SF available

Property specifications

- 6,288 SF Class A office space available
- Westfield Corporate Center is a three story, 65,000 SF, Class A office building located in a primary point along one of Lehigh Valley's most traveled business corridors
- Building features a 3-story atrium and an attractively landscaped site
- 24-hour key card controlled entry
- Located within minutes of shopping and dining
- Located adjacent to and visible from the Lehigh Valley exit of the Northeast Extension of the PA Turnpike (I-476)

**4905 W. Tilghman Street
Allentown, PA**



[Take a virtual tour](#)

Phil Schenkel
Executive Vice President
phil.schenkel@jll.com
+1 484 635 3228

Matthew Dorman
Vice President
matthew.dorman@jll.com
+1 484 635 3236

Jones Lang LaSalle Brokerage, Inc.
1550 Pond Road, Suite 150
Allentown, PA 18104
+1 484 635 3300