 **JLL** SEE A BRIGHTER WAY

For lease

951 Marcon Boulevard, Allentown, PA

Available Space

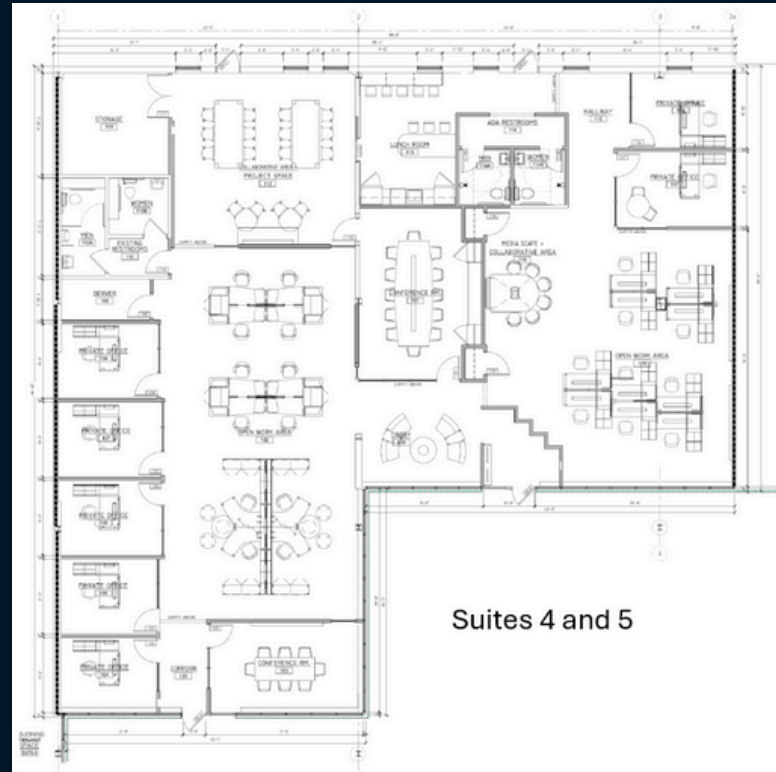
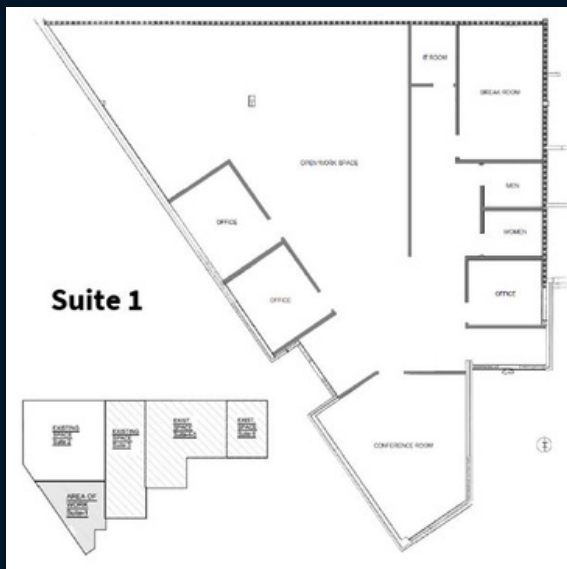
Suite 1 - 3,000 SF

Suite 4 & 5 = 6,300 SF (can be demised to 2,850 SF & 3,450 SF)

Property specifications

- Fully renovated one-story office building
- Suites 4 and 5 can be demised to
Suite 4: 3,450 SF and Suite 5: 2,850 SF
- Move-in ready
- Private suite entrances
- Public utilities, gas heat, fully air conditioned
- Easy access to Airport Road and minutes to Routes 22, 987, and 378
- Aggressive lease terms

951 Marcon Boulevard Allentown, PA



Phil Schenkel
Executive Vice President
phil.schenkel@jll.com
+1 484 635 3228

Matthew Dorman
Vice President
matthew.dorman@jll.com
+1 484 635 3236

Jones Lang LaSalle Brokerage, Inc.
1550 Pond Road, Suite 150
Allentown, PA 18104
+ 484 635 3300

jll.com

Although information has been obtained from sources deemed reliable, neither Owner nor JLL makes any guarantees, warranties or representations, express or implied, as to the completeness or accuracy as to the information contained herein. Any projections, opinions, assumptions or estimates used are for example only. There may be differences between projected and actual results, and those differences may be material. The Property may be withdrawn without notice. Neither Owner nor JLL accepts any liability for any loss or damage suffered by any party resulting from reliance on this information. If the recipient of this information has signed a confidentiality agreement regarding this matter, this information is subject to the terms of that agreement. ©2025. Jones Lang LaSalle IP, Inc. All rights reserved.