



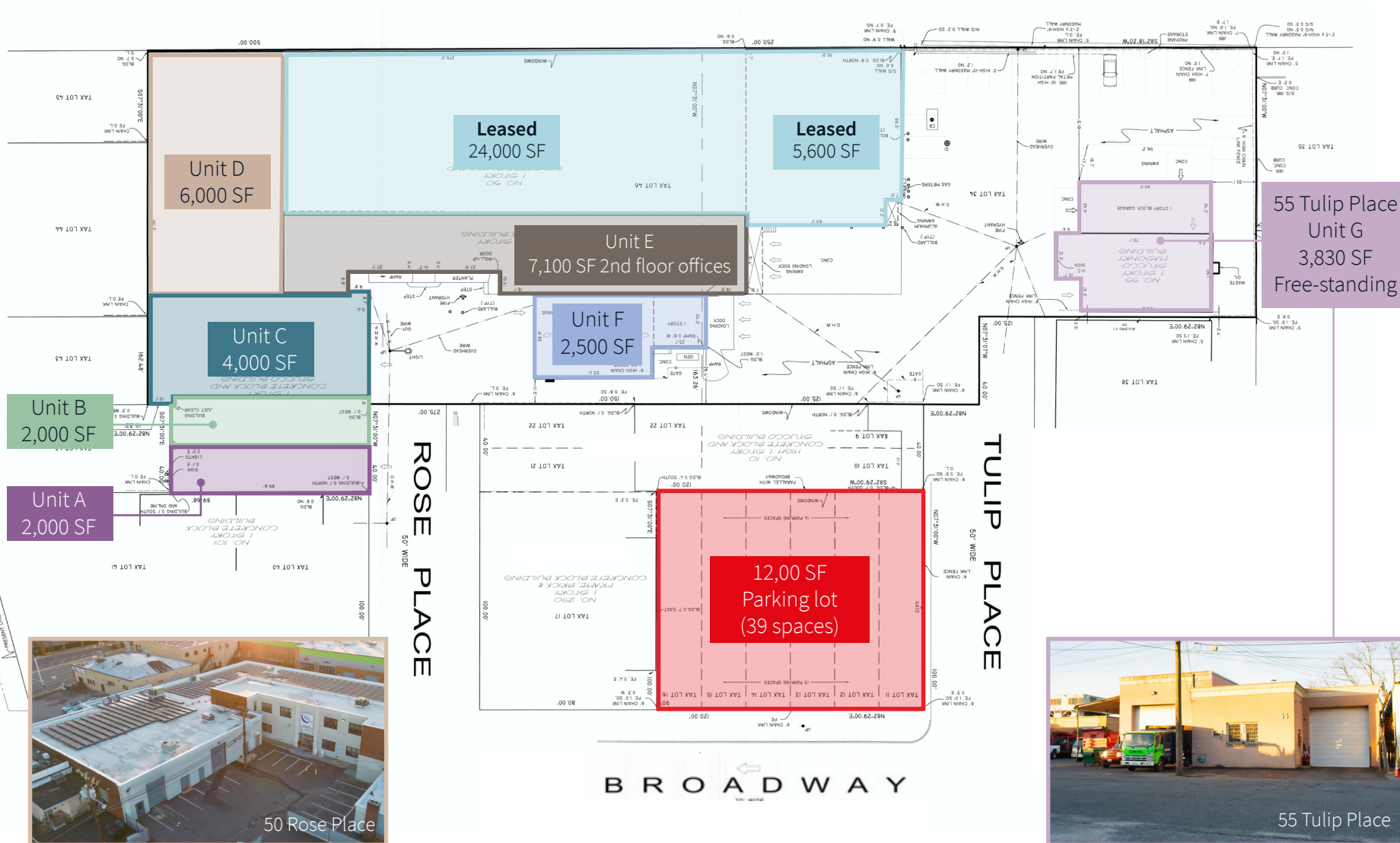
For lease

50 Rose Place, Garden City Park, NY 11040

 **JLL** SEE A BRIGHTER WAY

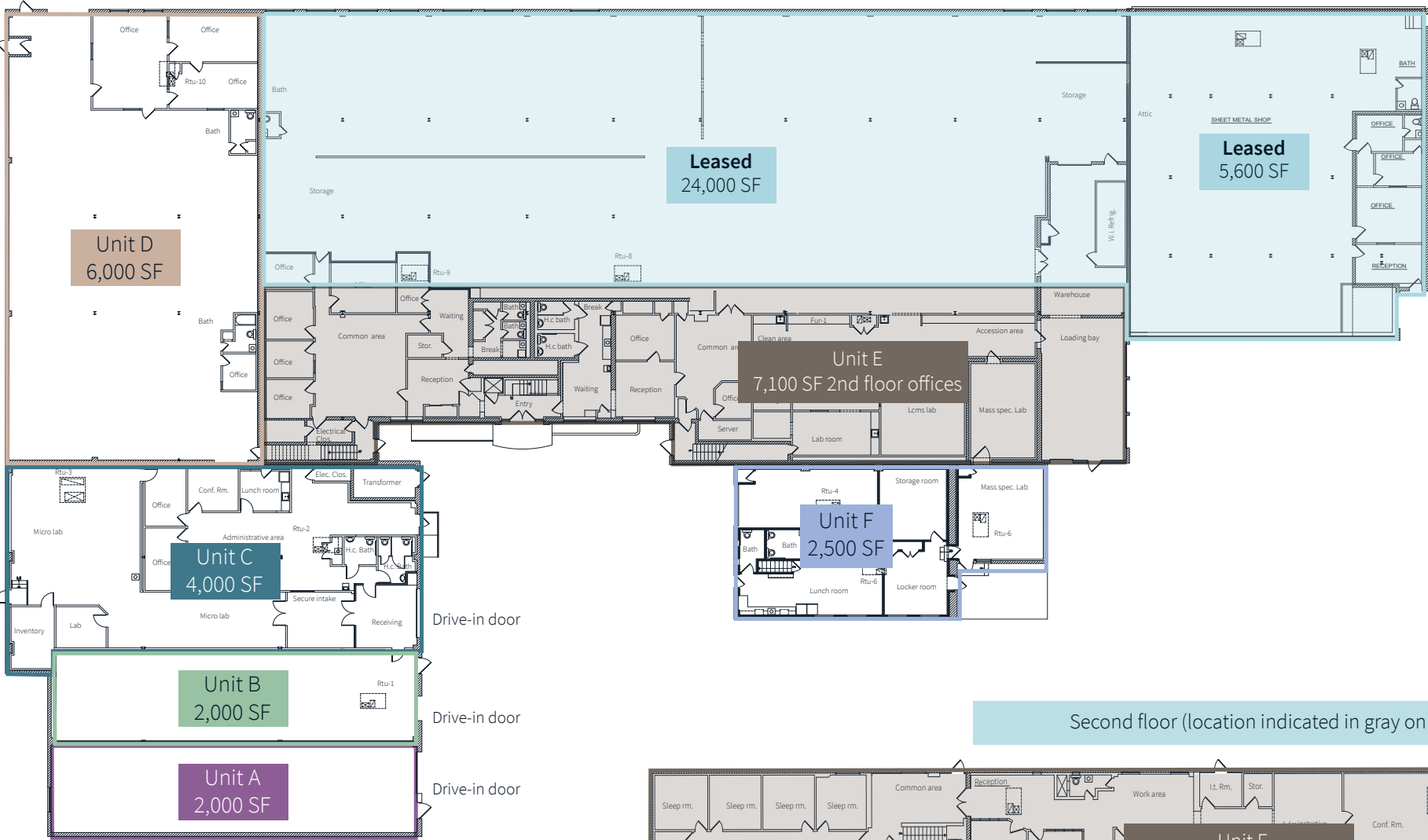
Property overview

- Multi-tenanted industrial property
- Unit sizes range from 2,000 SF up to 14,000 SF
- Ceiling height ranges from 12' to 16' clear
- Fully sprinklered



Floor plan

First floor



Second floor (location indicated in gray on first floor plan)



Location overview

Key distances

0.3 miles

Jericho Turnpike

8.9 miles

to JFK Airport

0.6 miles

to LIRR Mineola

11.9 miles

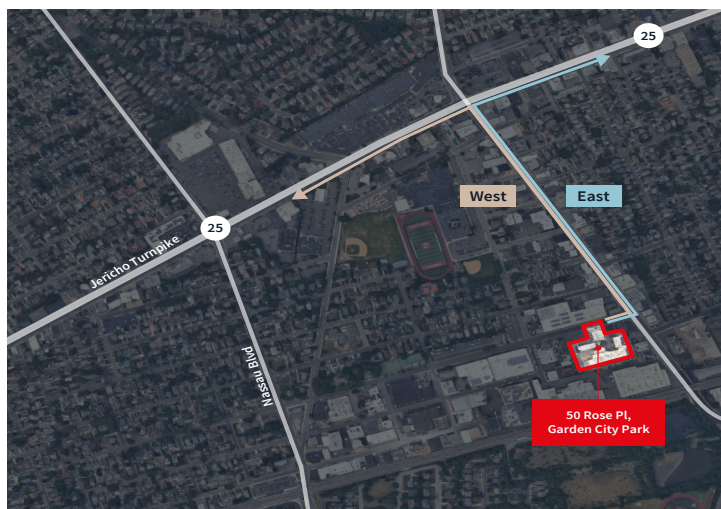
to LaGuardia Airport

3.65 miles

to Queens

16.4 miles

to Manhattan



30 minute drive-time statistics



Total Population
2,837,693



Total Labor Force
1,458,713



Transportation
Warehouse Workers
92,101



Median Warehouse
Related Hourly Wage
\$19.90 / HR



Median
Household Income
\$98,895 / YR



Exclusive Agent

Tom DiMicelli

Senior Managing Director

+1 631 962 2898

tom.dimicelli@jll.com