

NOW LEASING

Central NJ's Premiere Re-Development

Roebling Carpentry Shop
35 Clark Street, Trenton, NJ 08611



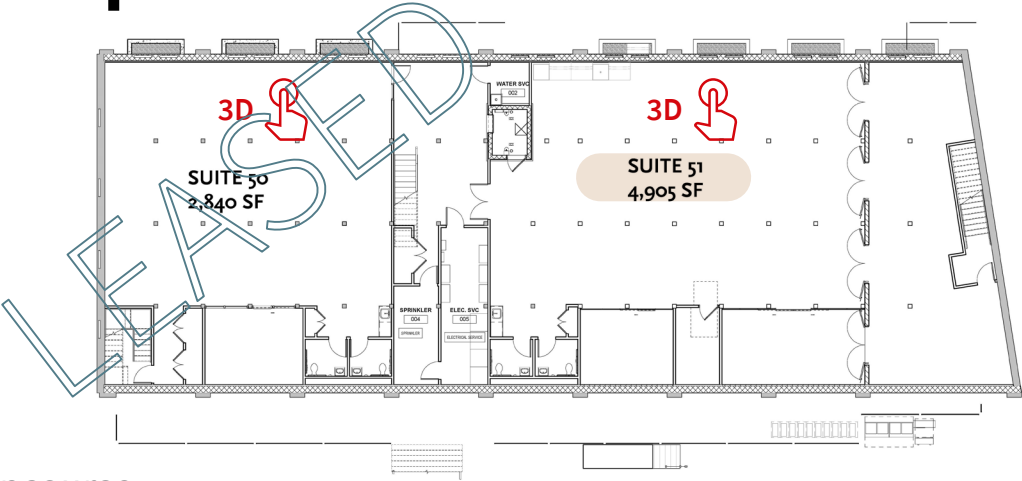
Roebling Carpentry Shop delivers stunning space with multi-modal transit access that attracts hard-to-recruit knowledge workers. Office suites with wood, brick, steel, and timber structures evoke a historical yet timeless aura. All-electric building with highly efficient HVAC and no or low-VOC finishes creates a healthy and sustainable work environment.



Thomas Romano
+1 609 658 1589
Thomas.Romano@jll.com

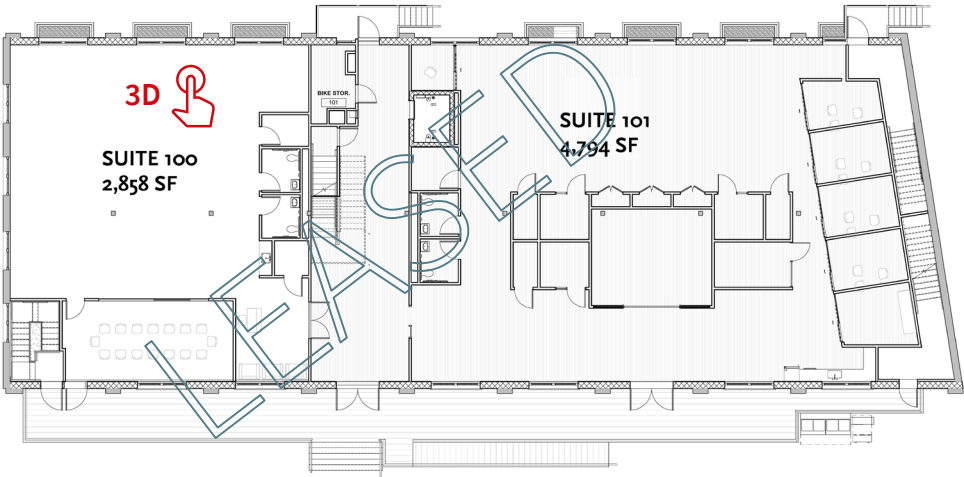
Exclusively developed by:
Hx2 Development Associates LLC.

Floor plans



AVAILABLE

Concourse

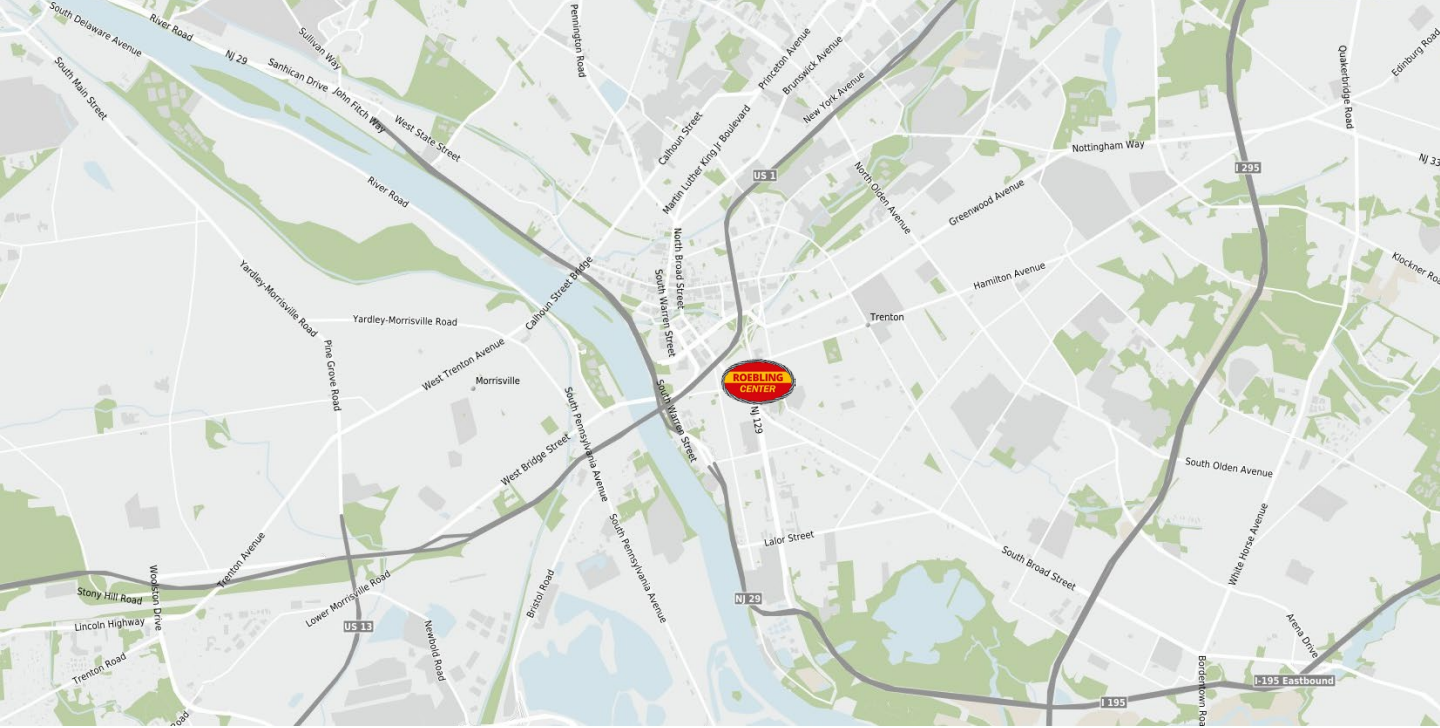


1st Floor



Building 110 is the oldest structure in Roebling Center, originally the carpentry shop for the factory complex. Its wood post-and-beam construction lends itself to a number of gracious renovation options.

Credit: Clarke Caton Hintz, Jeffrey Totaro



Easy access

High-speed roads link Roebling Carpentry Shop directly to US-1, I-195, I-295, I-287, and exit 7A of the NJ Turnpike. RiverLINE light rail station on-site provides train access to Princeton, Philadelphia, NYC, Boston and Washington via the Northeast Corridor. Locked bike storage and electric car charging stations support a wide range of transportation options. Next door to Roebling Market, the building is walking distance from diverse eateries in the adjacent Chambersburg neighborhood.

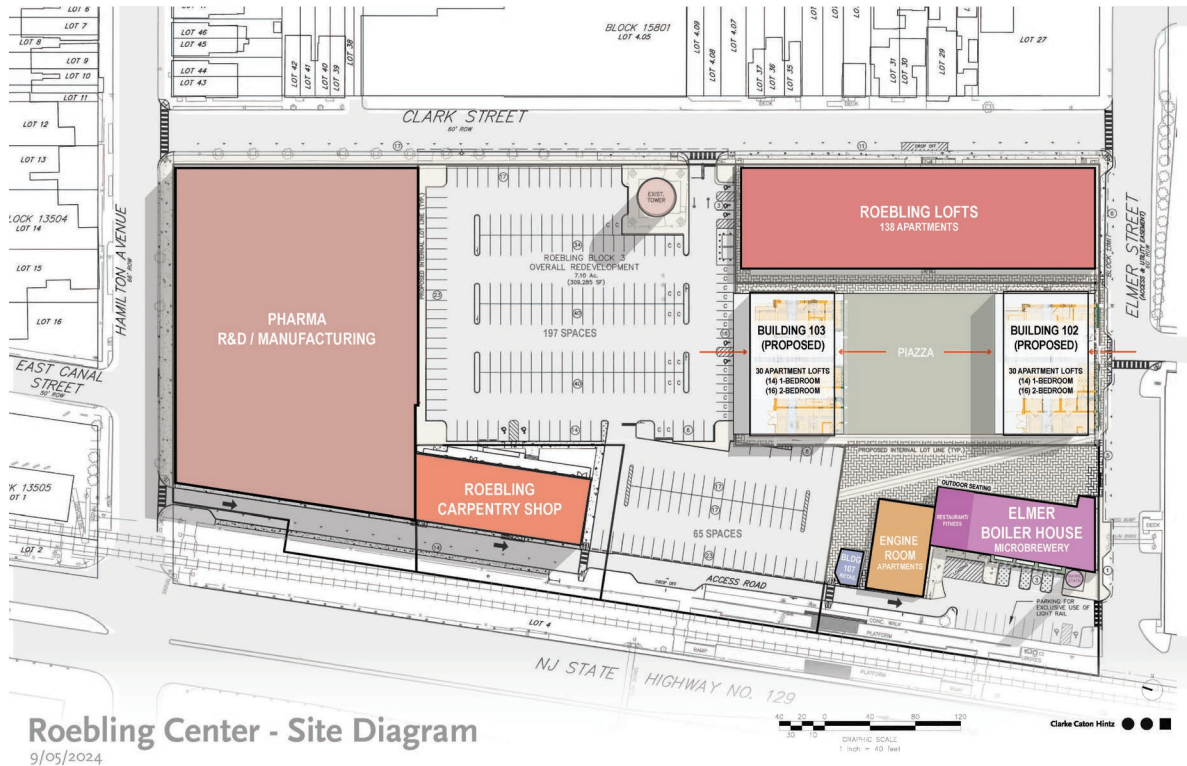
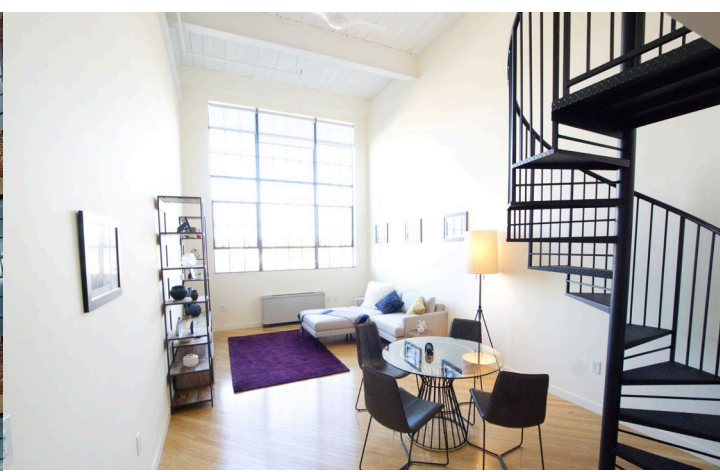
FEATURES



- Built-to-suit using award-winning Clarke Caton Hintz architects
- Daylit, with operable windows
- Separate high-efficiency heat pump HVAC systems for each office suite
- Outdoor deck with tables and chairs for lunch and meetings
- LED lighting and touchless, water saving fixtures

LIVE • WORK • PLAY DEVELOPMENT

Part of Roebling Center, a 385,000 SF mixed-use live/work/play development, employees have the opportunity to live on-site at LEED Gold Certified Roebling Lofts.



Roebling Center - Site Diagram
9/05/2024



Thomas Romano
+1 609 658 1589
thomas.romano@jll.com

Exclusively developed by:
Hx2 Development Associates LLC.

Although information has been obtained from sources deemed reliable, JLL does not make any guarantees, warranties or representations, express or implied, as to the completeness or accuracy as to the information contained herein. Any projections, opinions, assumptions or estimates used are for example only. There may be differences between projected and actual results, and those differences may be material. JLL does not accept any liability for any loss or damage suffered by any party resulting from reliance on this information. If the recipient of this information has signed a confidentiality agreement with JLL regarding this matter, this information is subject to the terms of that agreement. ©2024 Jones Lang LaSalle IP, Inc. All rights reserved.

Jones Lang LaSalle Brokerage, Inc.