

Premium Retail Available for Lease

345 Spear St, San Francisco, CA



Jones Lang LaSalle Brokerage, Inc.
Real Estate License #: 01856260

Morgan
Stanley

World Class Waterfront

Located on the beautiful Embarcadero Waterfront, **Hills Plaza** is a world class building in the heart of SOMA.

With its unique campus environment, amenity-rich neighborhood, and views overlooking the Bay Bridge, Hills Plaza offers the perfect space for all your retail needs. With a built-in customer base of world class tenants in the building, this is the prime location for your new retail or restaurant space.





SF MOMA

Recently expanded, the San Francisco Museum of Modern Art contains over 33,000 pieces of art.

FERRY BUILDING

Ferry terminal and marketplace featuring artisanal foods, local vendors, and farmer's market.

TRANSBAY TERMINAL

This state-of-the-art transit terminal connects 11 public transit systems. It also features new shopping, dining, and a 5.4 acre public rooftop park.

Hills Plaza

ORACLE PARK

Home of the San Francisco Giants. Popular destination for games, concerts, and events.

THE EMBARCADERO

This 3 mile waterway & roadway extends along the eastern border of the city and is a popular destination for tourists and joggers for its beautiful views of the Bay and scenic walking paths.

Area Demographics

47,617

Daytime population

\$200,001

Median household income

\$1,441,581

Median home value

37.8

Median age

\$317,619

Average Household Income



Amenity Map



Fitness

- 1 Flywheel Sports
- 2 The Dailey Method
- 3 TruFusion
- 4 Equinox
- 5 Core Power Yoga
- 6 Soul Cycle
- 7 Van Buren Fitness
- 8 Bay Club at The Gateway

Entertainment

- 1 SF Museum of Modern
- 2 Art Moscone Convention
- 3 Center California Historical
- 4 Society Oracle Park
- 5 SF Railway Museum
- 6 Theatre Rhinoceros
- 7 Landmark Theater
- 8 Eagle Club Indoor Golf
- 9 SPiN

Shopping

- 1 Athleta
- 2 Ann Taylor
- 3 Banana Republic
- 4 Old Navy
- 5 Lucy Activewear
- 6 Gap
- 7 Woodlands Market

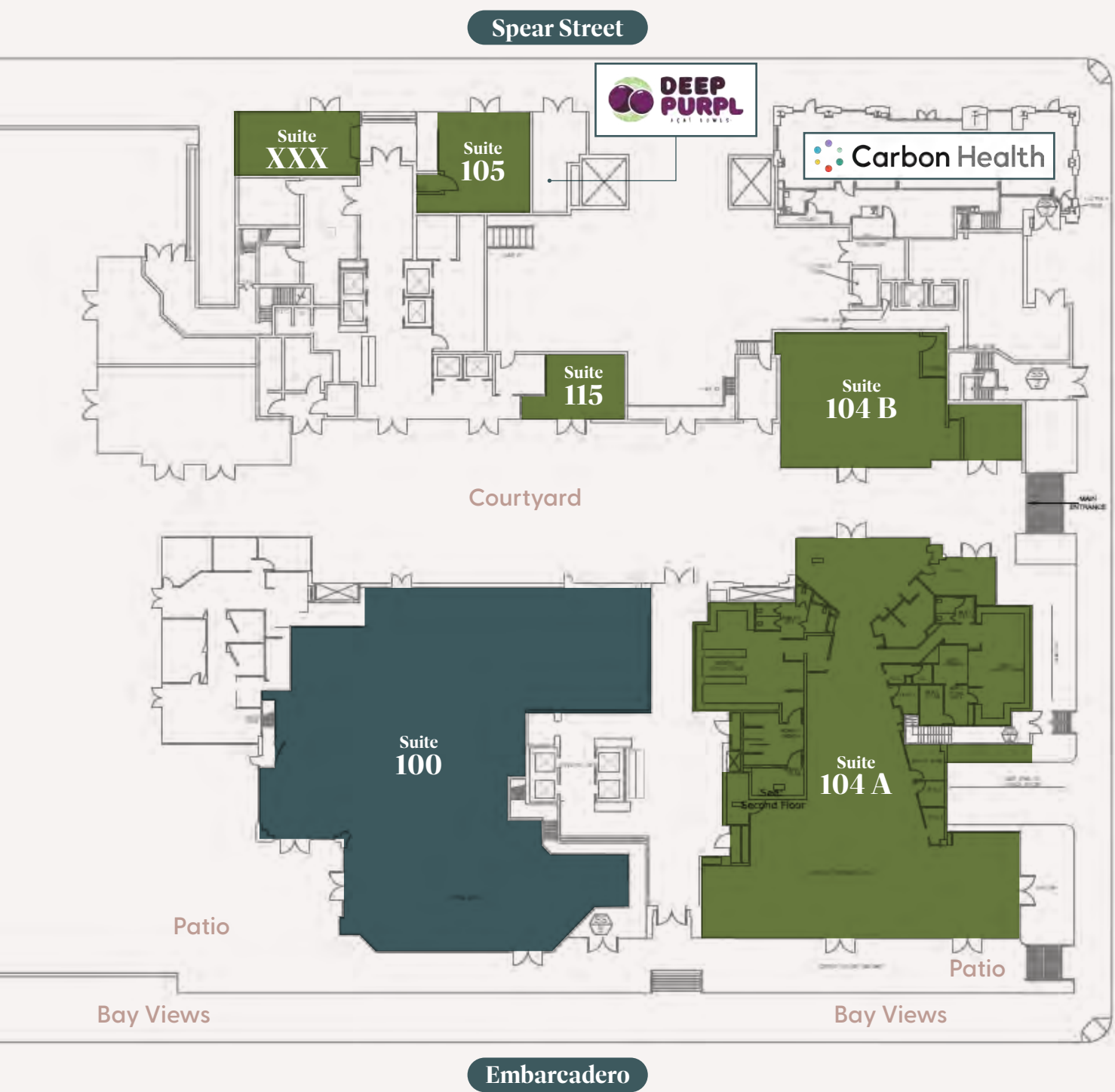
- 8 Publique Living
- 9 StretchLab
- 10 GNC
- 11 Financial District Hardware
- 12 The North Face
- 13 Luxury Pets

Restaurants

- 1 Ferry Building
- 2 One Market
- 3Americano
- 4Boulevard
- 5The One Hotel, Terrane Restaurant
- 6Yank Sing
- 7Bluestone Lane
- 8Ozumo
- 9Epic Steak
- 10Prospect
- 11Sweetgreen
- 12International Smoke
- 13Town Hall
- 14Rincon Center
- 15Osha Thai
- 16Pied Piper
- 17Waterbar
- 18Benu
- 19Saison
- 20Fly Trap
- 2121st Amendment
- 22Local Kitchen & Wine Merchant
- 23Spice Kit

- 24 Philz Coffee
- 25 Gabby Cafe
- 26 Mendocino Farms
- 27 Town's End Bakery
- 28 Crossroads Cafe
- 29 Delancey Street
- 30 House of Hunan
- 31 Paragon Restaurant + Bar
- 32 Proper Food
- 33 Tres
- 34 Ozone Thai
- 35 La Briciola
- 36 Garaje
- 37 Canton Seafood + Dim Sum
- 38 Portico
- 39 Sushi Fantastic
- 40 Slanted Door
- 41 Super Duper Burger
- 42 Mili Wine Bar
- 43 Red Dog Restaurant + Bar
- 44 STK
- 45 Gott's Roadside
- 46 Angler
- 47 Akikos

345 Spear St



AVAILABLE SUITES

SUITE 105

1,199 SF - Available now

SUITE 115

695 SF - Available now

SUITE 100

Restaurant Space: 12,428 RSF
Patio: 2,371 SF
In Lease

SUITE 104 A

11,758 SF - Available Now

SUITE 104 B

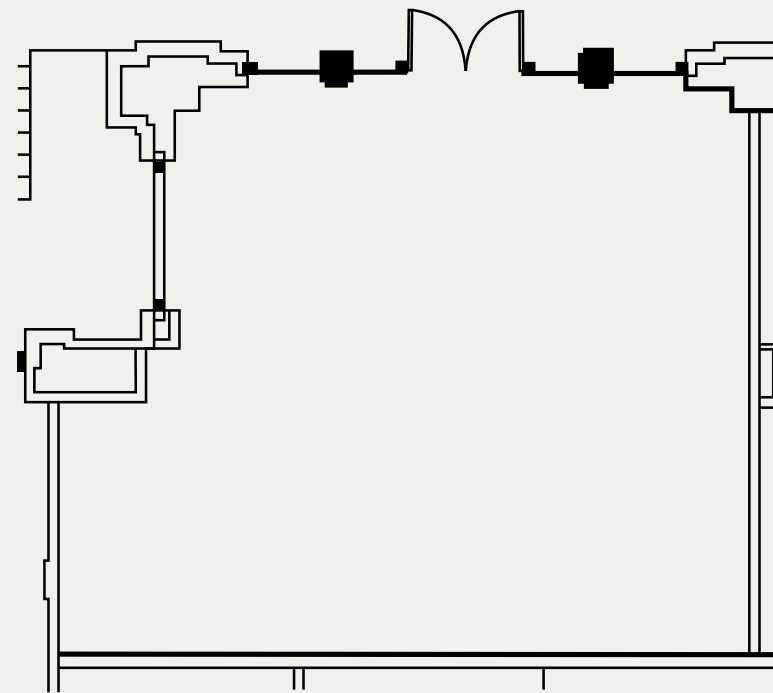
2,958 SF - Available Now

SUITE XXX

X,XXX SF - Available now

SUITE
105

1,199 SF
Available now



Highlights

Retail
use



Open
area

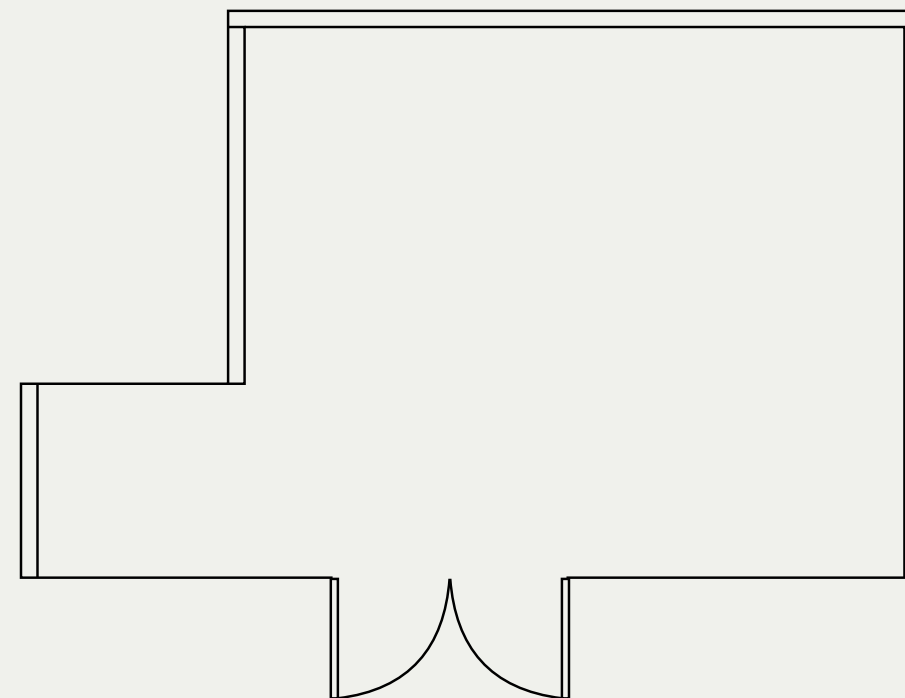


Spear Street
frontage



SUITE
115

695 SF
Available now



Highlights

Retail
use



Open
area



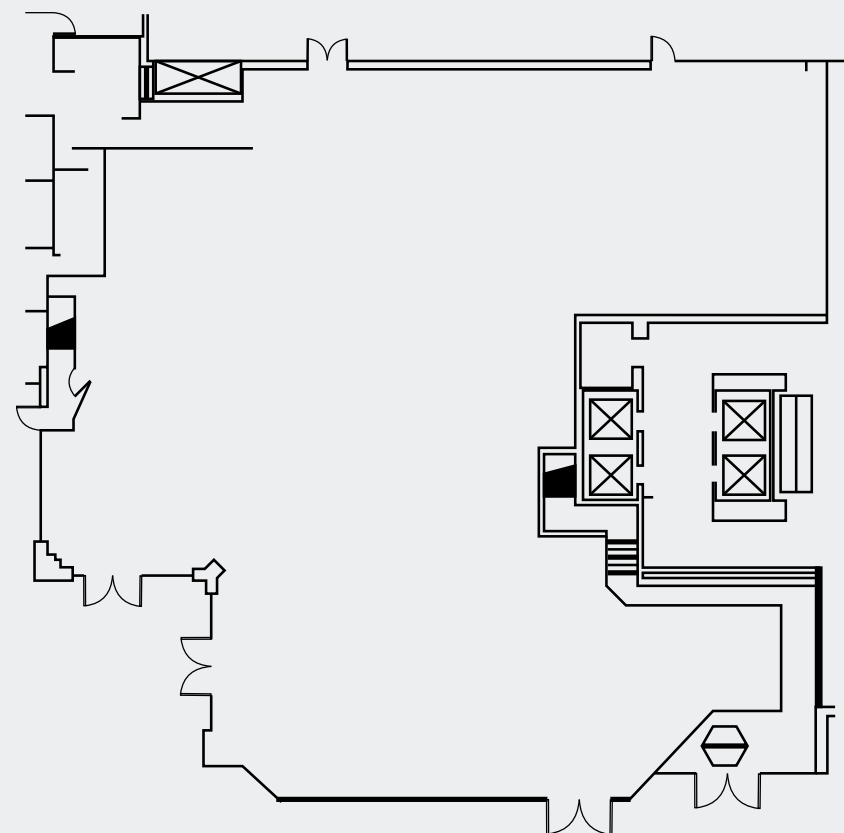
Full glass
front



Courtyard
suite



SUITE
100 | 12,428 SF
In Lease

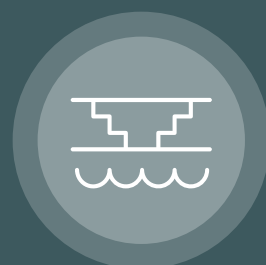


Highlights

Patio Available
2,371 SF



Expansive
Bay Views



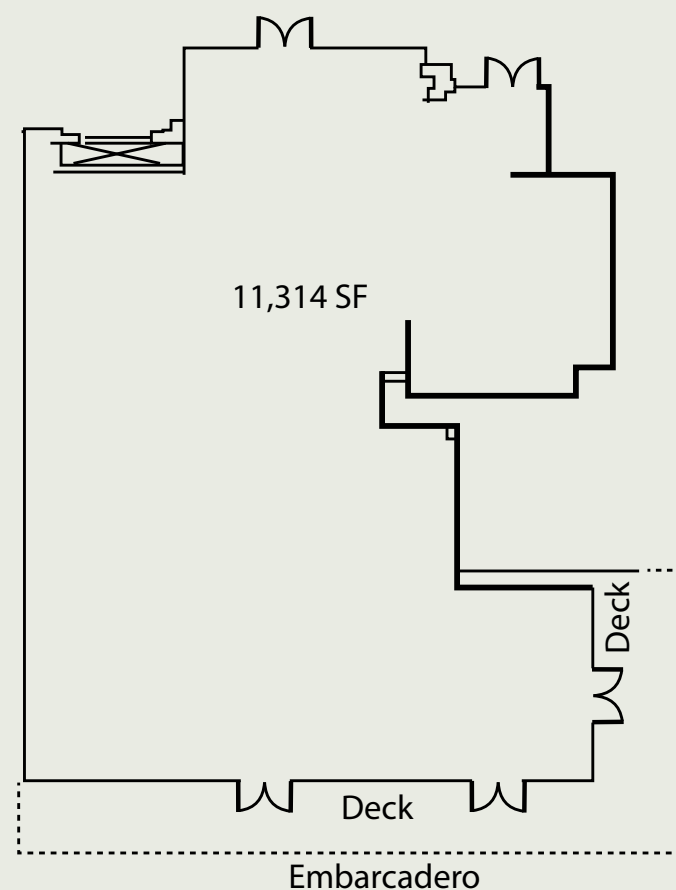
Open, high
ceilings



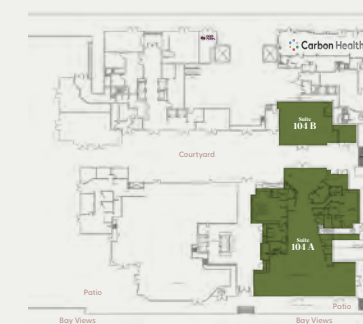
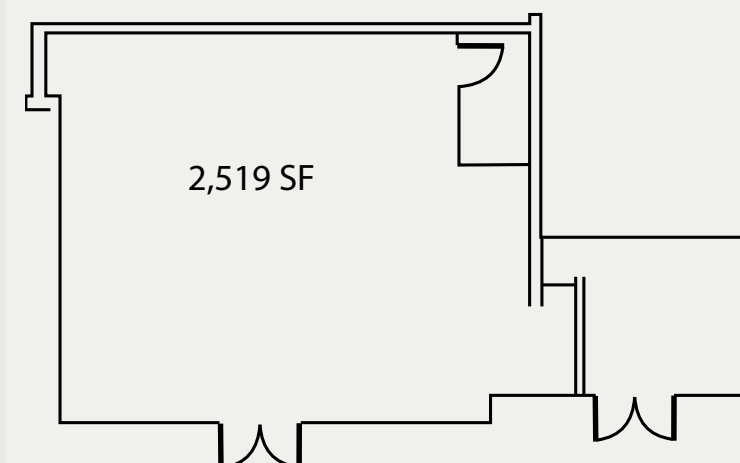
Restaurant
infrastructure
in place



SUITE
104 A | 11,758 SF
Available now

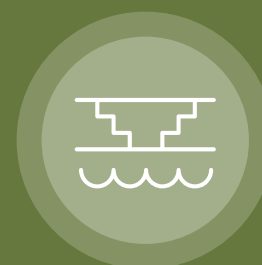


SUITE
104 B | 2,958 SF
Available now

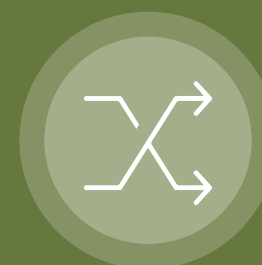


Highlights

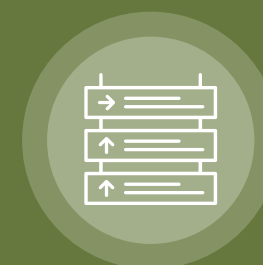
Expansive
Bay Views



Suites can be leased
together or separate



Ground floor
with signage





For retail leasing contact:

Laura Tinetti

+1 415 228 3072

laura.tinetti@jll.com

RE LIC #01358500

For office leasing contact:

Wes Powell

+1 415 395 4901

wes.powell@jll.com

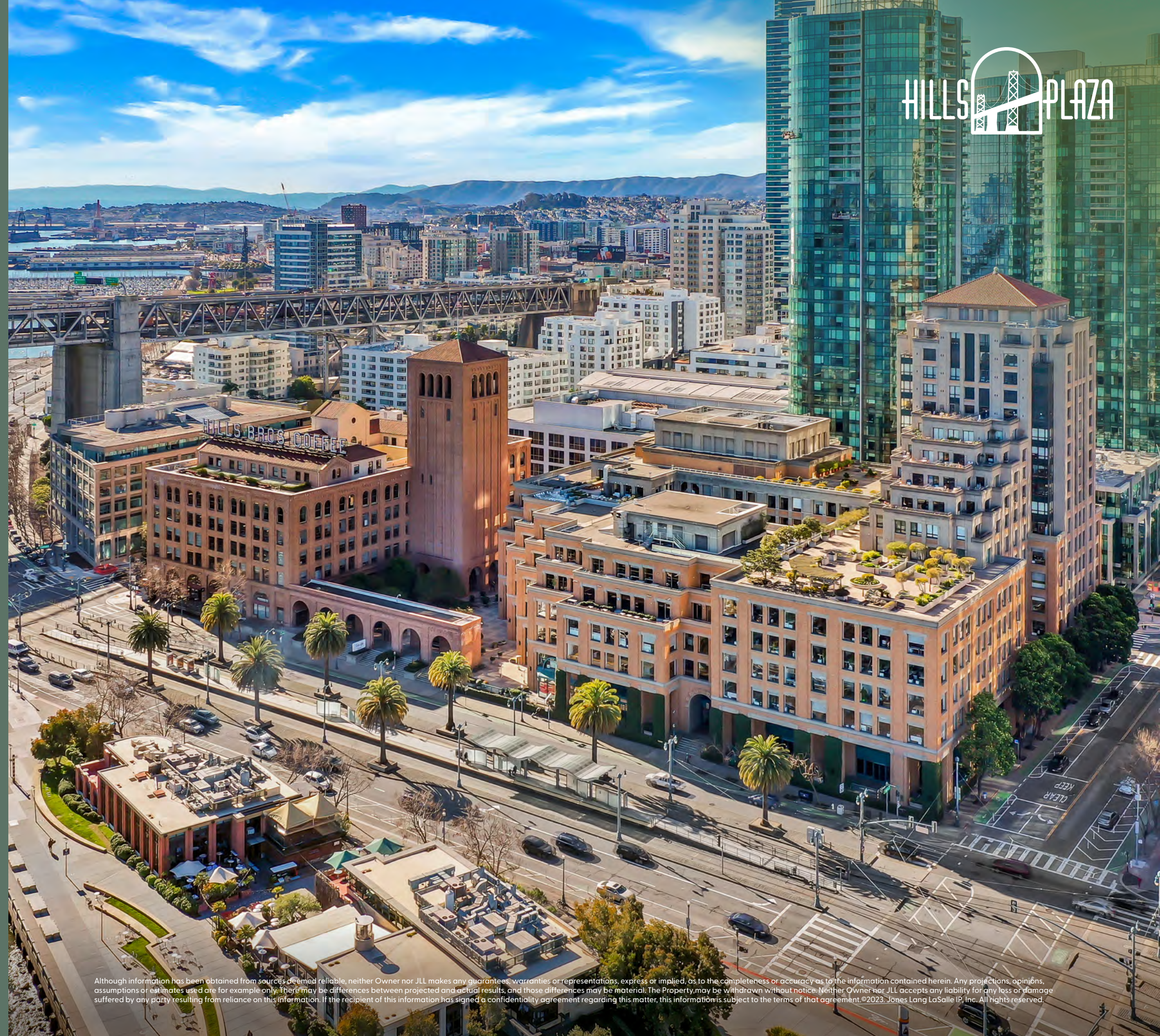
RE LIC #1702003

Ann Montila

+1 415 395 7285

ann.montila@jll.com

RE LIC #1889254



Although information has been obtained from sources deemed reliable, neither Owner nor JLL makes any guarantees, warranties or representations, express or implied, as to the completeness or accuracy as to the information contained herein. Any projections, opinions, assumptions or estimates used are for example only. There may be differences between projected and actual results, and those differences may be material. The Property may be withdrawn without notice. Neither Owner nor JLL accepts any liability for any loss or damage suffered by any party resulting from reliance on this information. If the recipient of this information has signed a confidentiality agreement regarding this matter, this information is subject to the terms of that agreement. ©2023 Jones Lang LaSalle IP, Inc. All rights reserved.