 **JLL** SEE A BRIGHTER WAY

For sale

Galena Commercial Park
Shovel ready with permits

property.jll.com/en-pr

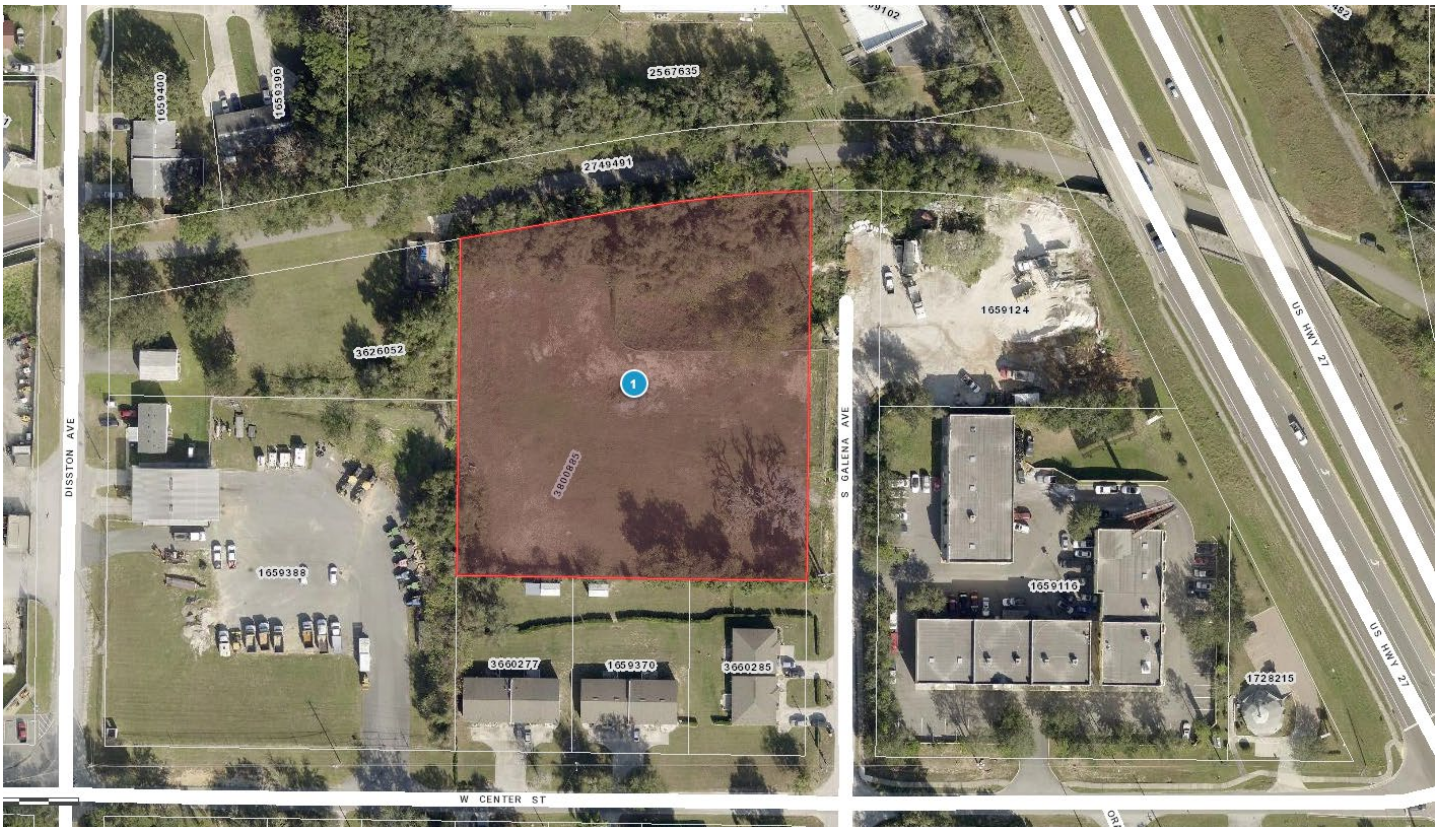
About the site

2.29 acres of shovel-ready land are available for sale at 715 S Galena Ave., Minneola, FL, USA. Development and stormwater management system permits have been secured for up to 20,700 square feet of construction across two buildings, along with 35 parking spaces. Its strategic location makes it ideal for a transshipment warehouse, light industrial manufacturing, and distribution centers.

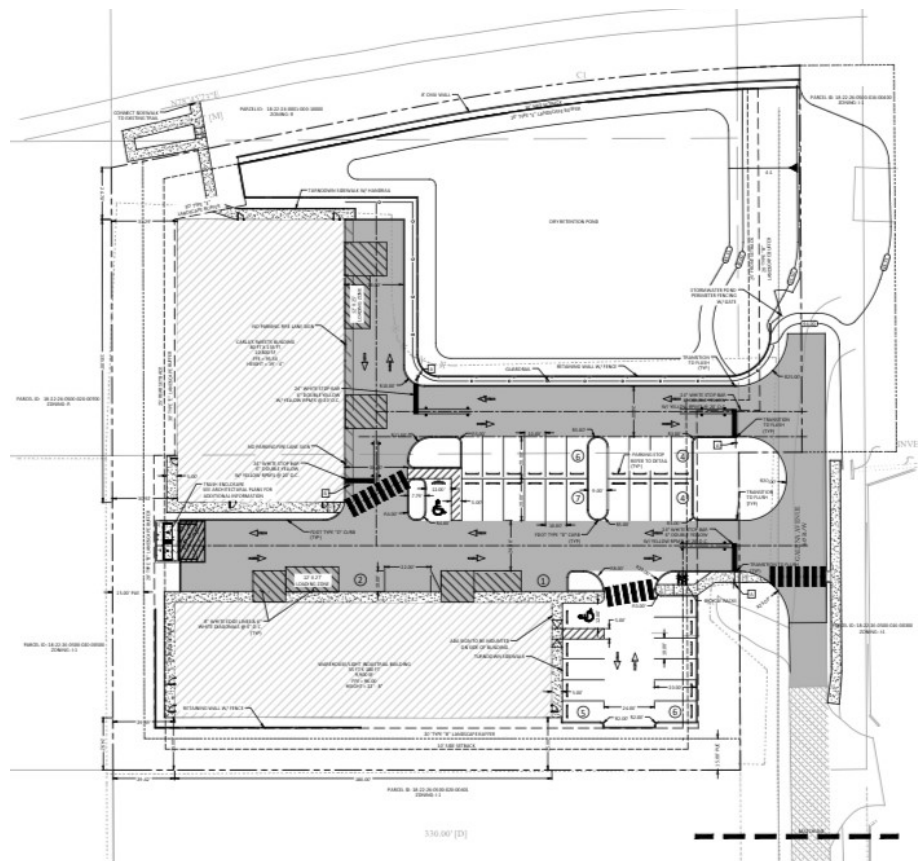
PROPERTY SUMMARY

ADDRESS	715 S Galena Ave. Minneola FL 34715 US
LOCATION	28.572968450341616, -81.74865798381266
PROPERTY TYPE	Land
LOT SIZE	2.29 acres
PARCEL NUMBER	182226050002000201
ZONING	I-1 Industrial
FLOOD ZONE	Zone X
PRICE	\$995,000

Site Aerial



Site Plan



Renderings

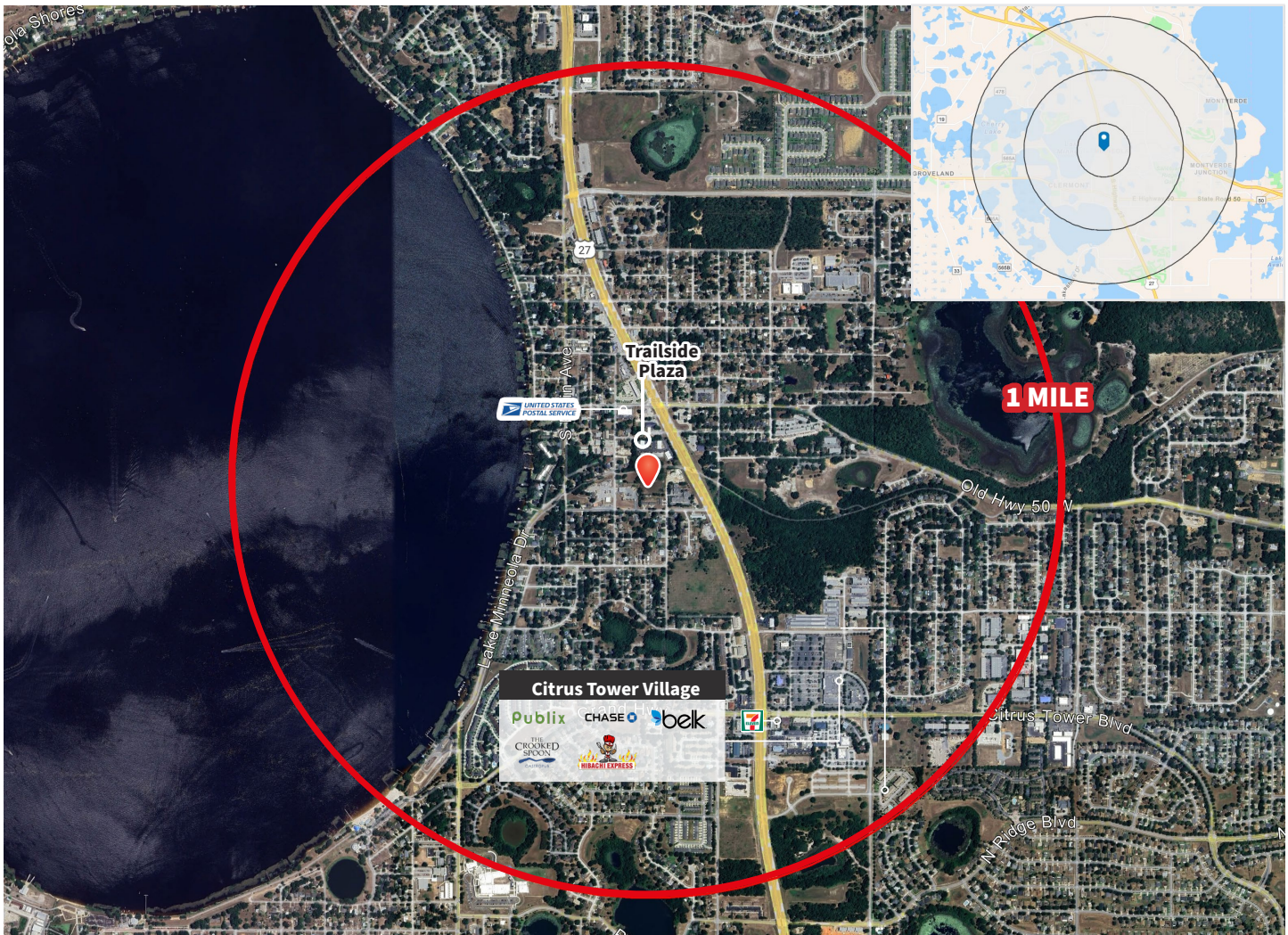


Location highlights

The site is strategically located with easy access to major highways like US-27, making it ideal for logistics and transportation needs. Its central position within Florida allows for efficient distribution across the state. Additionally, the nearby infrastructure supports light industrial and warehousing operations, enhancing its suitability for such developments.

Demographics	1-mile	3-mile	5-mile
Population	8,455	47,335	97,944
Households	3,135	17,506	36,589
Median HH Income	\$84,350	\$87,091	\$93,981

Source: Esri, 2024



Franco González
Transaction Manager
FL Lic. SL3442716
+1 787 635 9301
franco.gonzalez@jll.com

Andy Carlson
Country Manager
FL Lic. BK3010381
+1 727 403 2503
andy.carlson@jll.com

Exclusively listed by:

JLL Puerto Rico Realty & Co., S. En C.
License Number: E-297
+1 787 777 5800
27 González Giusti Street Suite 101,
Guaynabo PR 00968
www.us.jll.com/puerto-rico

Although information has been obtained from sources deemed reliable, JLL does not make any guarantees, warranties or representations, express or implied, as to the completeness or accuracy as to the information contained herein. Any projections, opinions, assumptions or estimates used are for example only. There may be differences between projected and actual results, and those differences may be material. JLL does not accept any liability for any loss or damage suffered by any party resulting from reliance on this information. If the recipient of this information has signed a confidentiality agreement with JLL regarding this matter, this information is subject to the terms of that agreement. ©2023. Jones Lang LaSalle IP, Inc. All rights reserved.