

# For Sublease

11150 Zodiac Lane

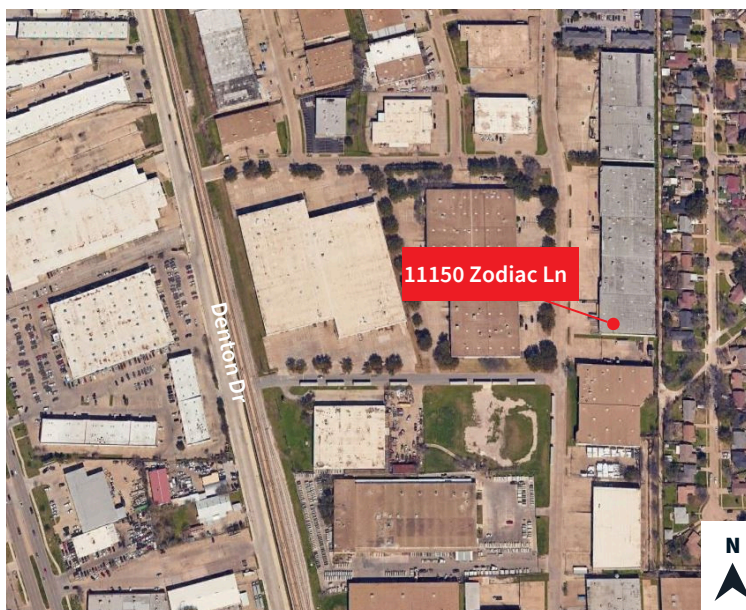
Dallas, TX 75229

**±41,252 SF Available**



## Property Specifications

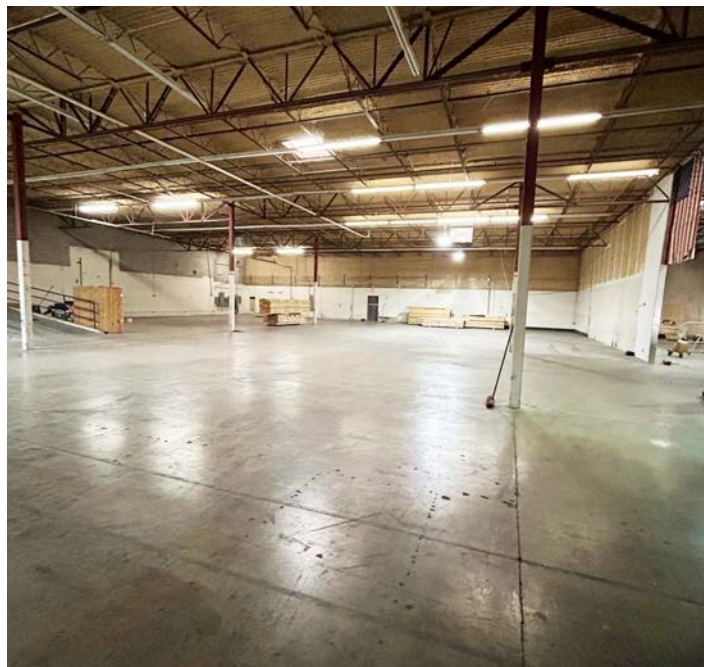
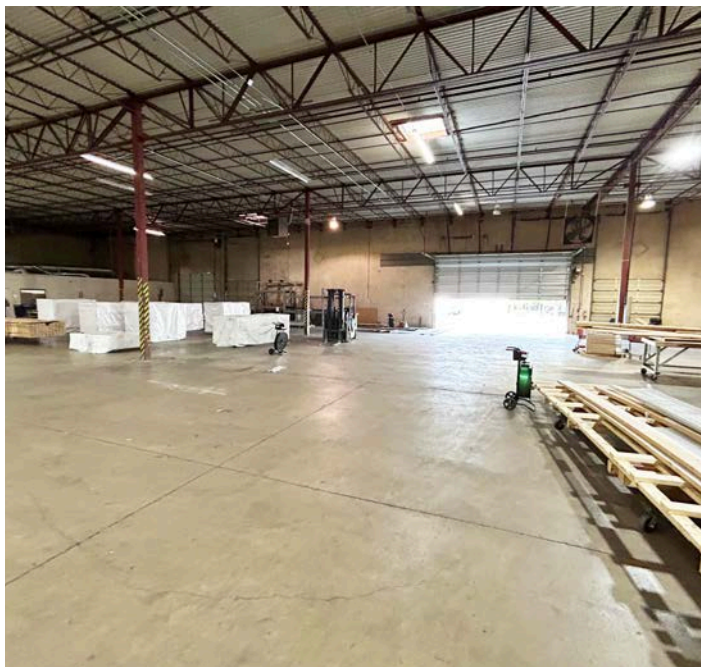
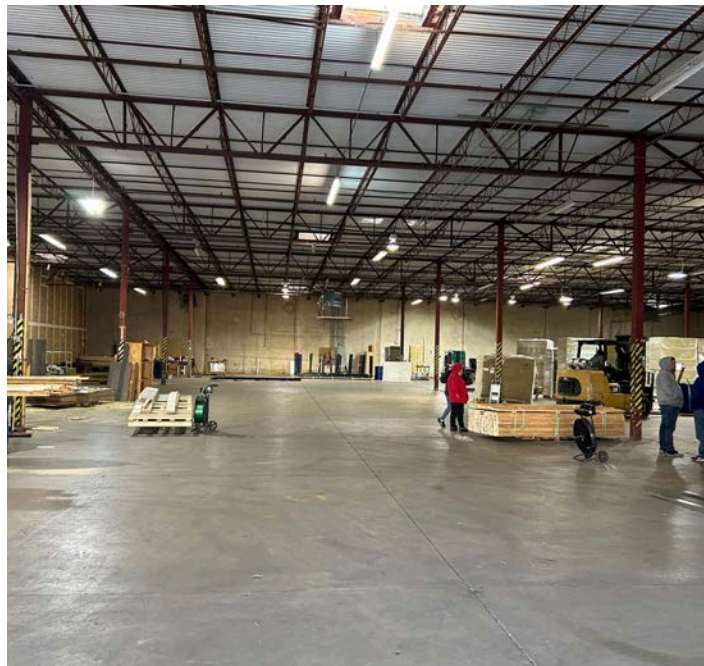
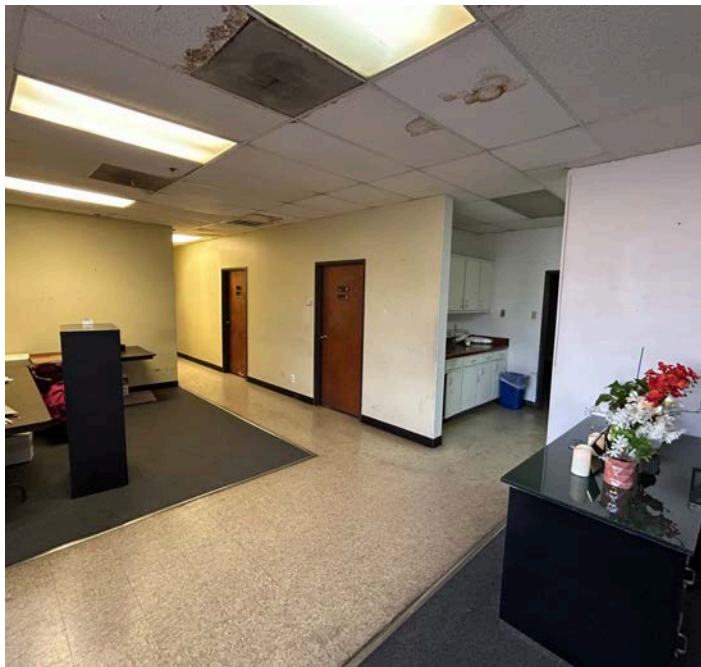
- ±41,252 RSF
  - ±1,700 RSF Office (North Side)
  - ±1,500 RSF Office (South Side)
- Available: Immediately
- Sublease Expires: March 31, 2027
- Clear Height: 20'
- Column Spacing: 28' x 41'
- Power: 1,800 Amps, 120/240 Volts, 3 Phase
- Front Loading:
  - 6 Dock-High Loading
  - One Ramped
  - One 20' Wide





11150 Zodiac Lane | Dallas, TX 75229

## Property Photos



Although information has been obtained from sources deemed reliable, neither Owner nor JLL makes any guarantees, warranties or representations, express or implied, as to the completeness or accuracy as to the information contained herein. Any projections, opinions, assumptions or estimates used are for example only. There may be differences between projected and actual results, and those differences may be material. The Property may be withdrawn without notice. Neither Owner nor JLL accepts any liability for any loss or damage suffered by any party resulting from reliance on this information. If the recipient of this information has signed a confidentiality agreement regarding this matter, this information is subject to the terms of that agreement. © 2024 Jones Lang LaSalle IP, Inc. All rights reserved.