

500,192 SF DISTRIBUTION
WAREHOUSE

AVAILABLE FOR LEASE | FOR SALE

501 Airtech Parkway Plainfield, IN



12 minute drive
to FedEx Express
World Hub



Situated within a
premier industrial
business park



6,600 amps of power
& (2) 1000 kW 60Hz
generators



Sustainably
certified with
IREM CSP

BUILT	1999
SITE	33.2 acres
OFFICE	105,000 SF 2-story
CONSTRUCTION	Tilt-up wall
SLAB	7" concrete floors
ROOF	2022 Ballasted EPDM
COLUMN SPACING	42'8" x 42'8" 42'8" x 50' loading
TRUCK COURT	140' Concrete apron
LOADING FACILITIES	Cross-dock 25 doors equipped with 30,000 lb Pentalift levelers

DRIVE-IN DOOR	(4) 9' x 12' drive-in door
LIGHTING	Warehouse: LED Office: T-8
POWER	(2) 2,500 amp GE + (1) 1,600 amp GE
HVAC	Office: 3 multi-zone roof HVAC units Warehouse: 25 rooftop units (air) 12 suspended heating units
FIRE SUPPRESSION	ESFR 3/4" k-14 165 degree
PARKING	704 auto spaces
SECURITY	Fully fenced w/ guard shack
EQUIPMENT	(2) 1000 kW 60Hz CAT generators



BELINDA FLORES
Senior Director,
Asset Management
469.964.3348
bflores@granitereit.com



BRIAN BUSCHUK
Senior Managing Director
317.810.7180
brian.buschuk@jll.com

STEVE SCHWEGMAN, SIOR
Executive Managing Director
Market Lead - Indianapolis
317.810.7185
steve.schwegman@jll.com

SITE PLAN

Airtech Pkwy

Stout Heritage Pkwy

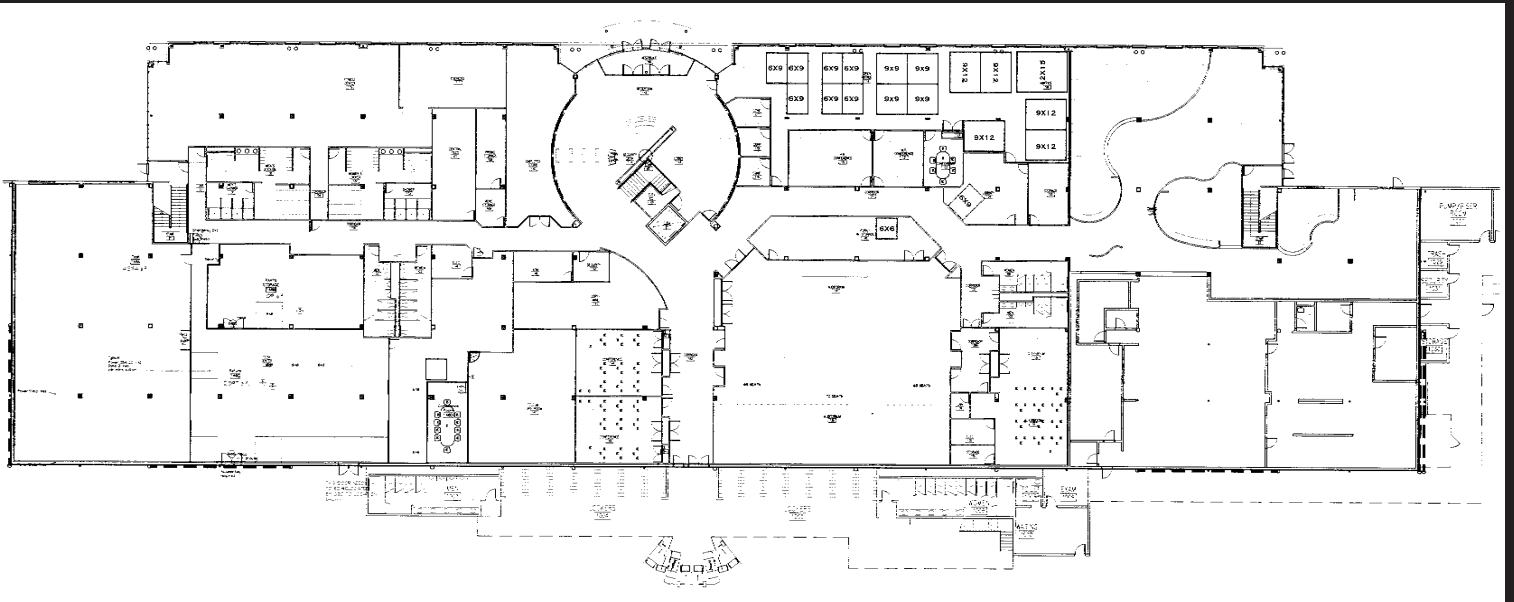


AERIALS

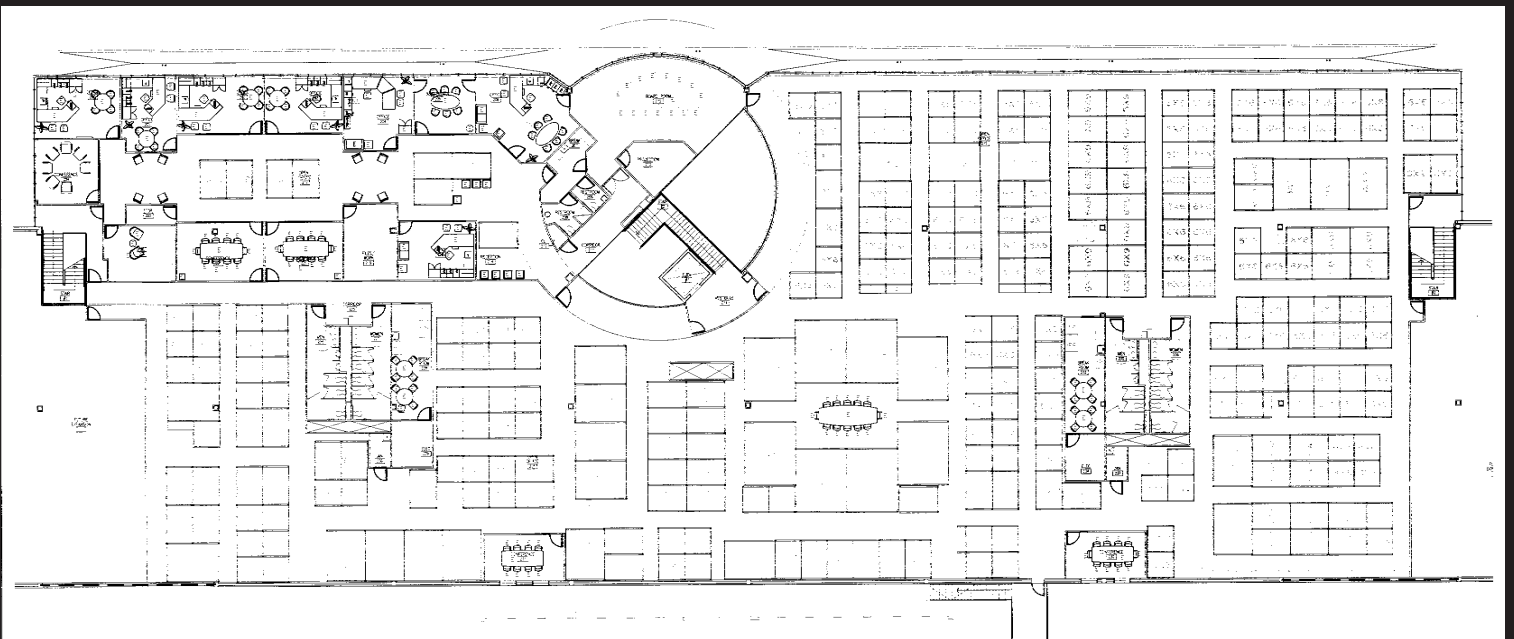


OFFICE

First Floor



Second Floor



LOCATION



ACCESS

The Shops at Perry Crossing	1.1 miles
I-70	2 miles
Indianapolis International Airport	3.6 miles
I-465	6.4 miles
Zoning	I-2



BELINDA FLORES
Senior Director,
Asset Management
469.964.3348
bflores@granitereit.com



BRIAN BUSCHUK
Senior Managing Director
317.810.7180
brian.buschuk@jll.com

STEVE SCHWEGMAN, SIOR
Executive Managing Director
Market Lead - Indianapolis
317.810.7185
steve.schwegman@jll.com