



For Sublease

675 Massachusetts Avenue
Cambridge, MA

Office Space Available in Central Square
±2,553 SF Available

Property Overview

Central Plaza is a unique opportunity to be located in the heart of Cambridge, in the dynamic Central Square area. With close proximity to both Harvard and Kendall Squares, the property offers tenants singular tower quality, superior location and access, diverse amenities, MIT, the Charles River, and the Boston skyline.



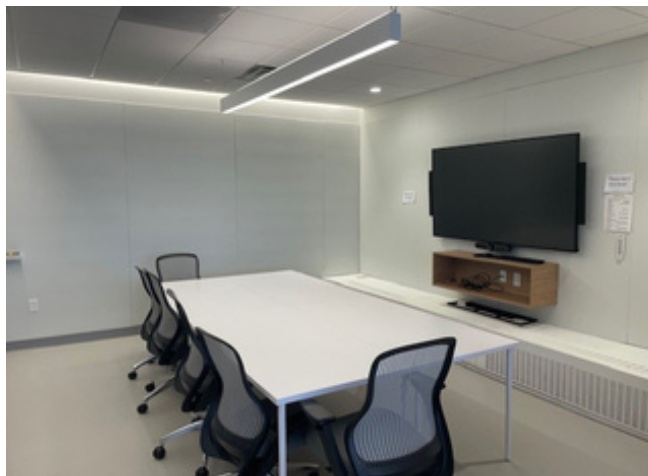
Property Specifications

Building SF	±208,458 SF
Floors	15
Availability	5th Floor: ±2,553 SF
Available	Immediately
Term	Through December 2032

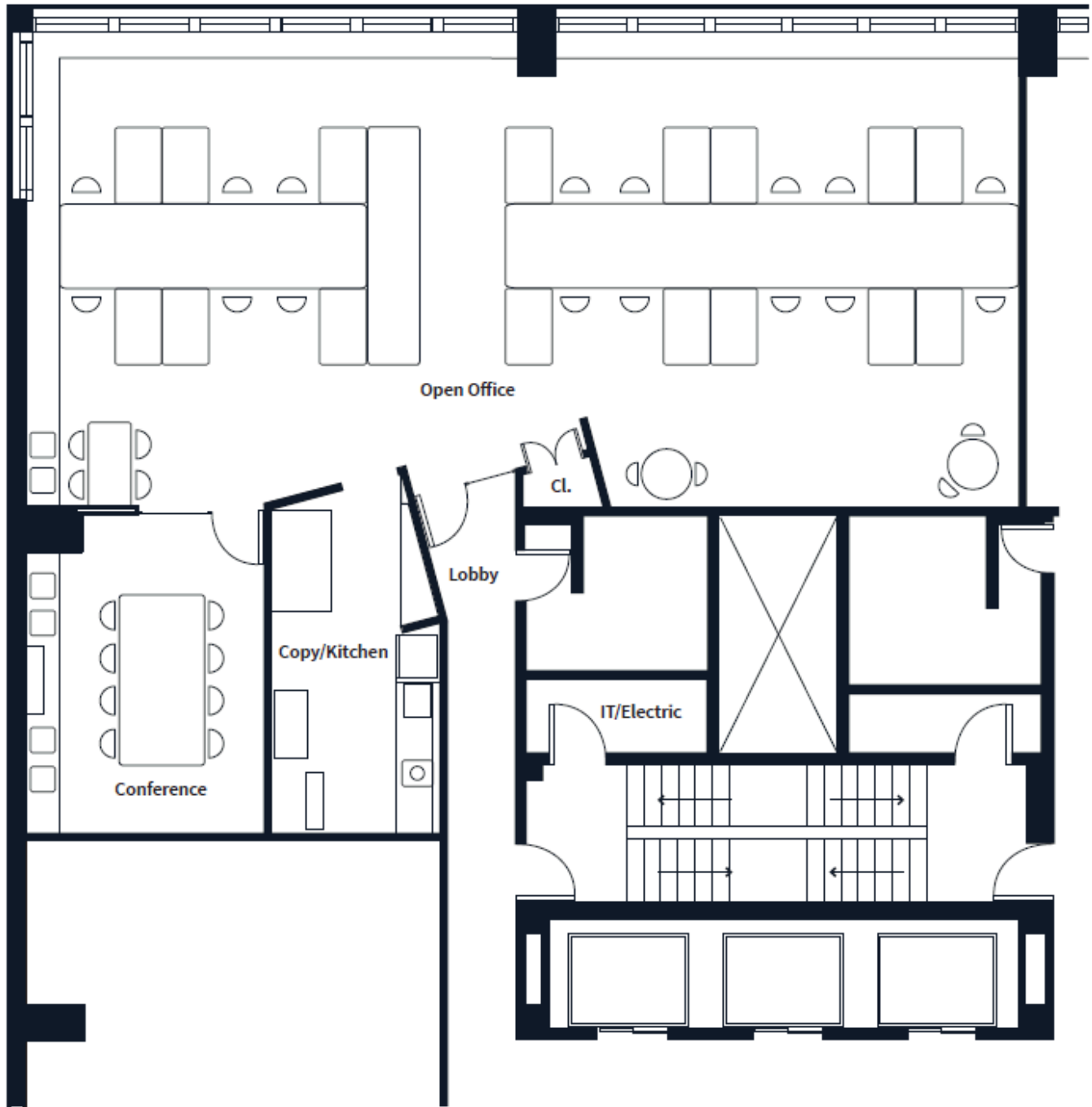
Parking	1.0/1,000 SF
----------------	--------------

Amenities

- Located in the heart of Central Square with easy access to Route 2, Memorial and Storrow Drive
- Walking distance to restaurants and retail
- Indoor bike storage,
- Showers & locker rooms
- Ample parking



5th Floor | ±2,553 SF



John Osten
Managing Director
John.Osten@am.jll.com
+1 617 921 2090