



For lease

The Watkins at Shockoe | 125 S 14th Street, Richmond, VA



SEE A BRIGHTER WAY



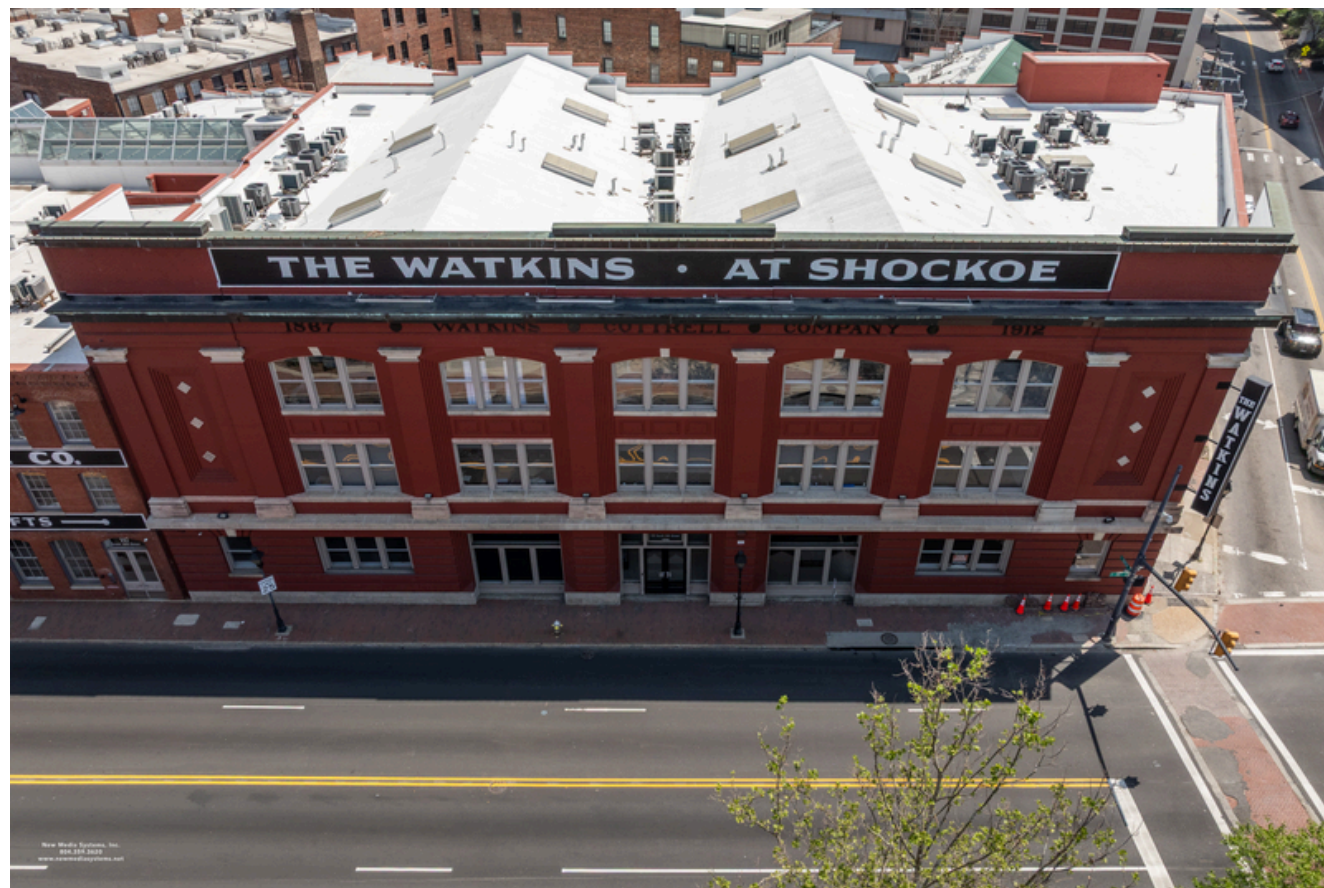
THE MAN WITH
SQUARE FEET

CELEBRATING 40 YEARS WITH 40 MILLION SQ. FT.

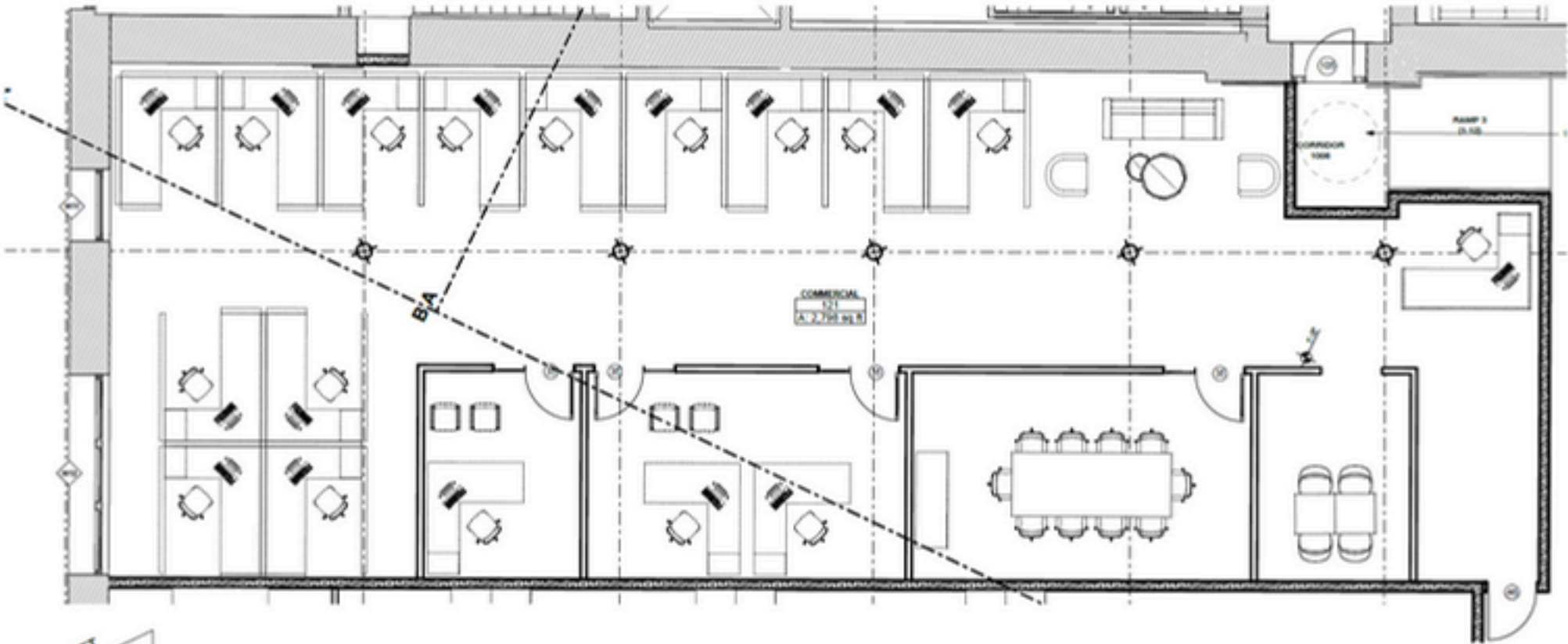
THE WATKINS AT SHOCKOE

Building Features

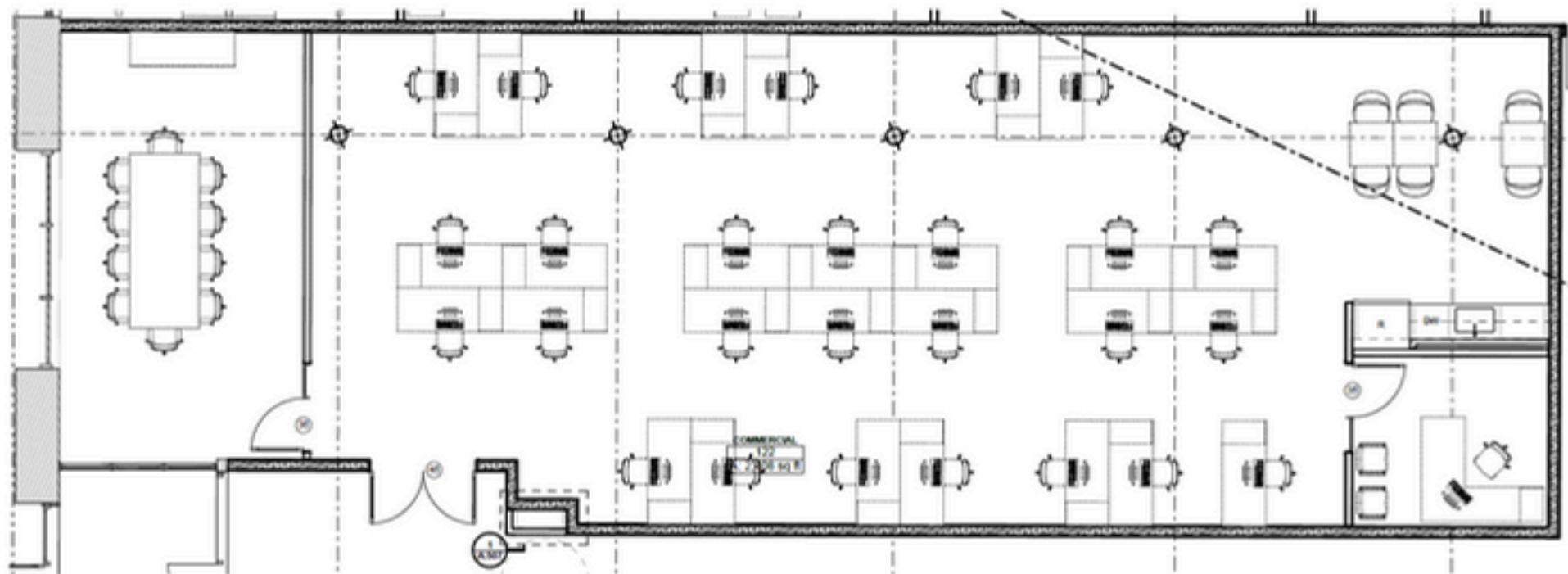
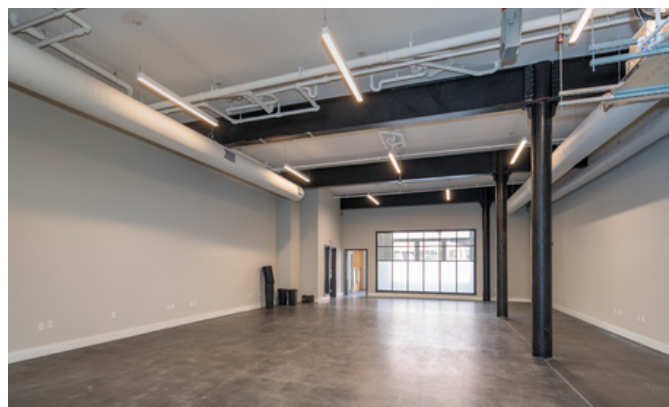
- 2,284± SF - 14,057± SF available
- Newly finished spec suites
- High exposed ceilings with ample natural light
- High visibility location on the corner of 14th and Dock Street
- On-site amenities include parking, fitness center, business center, and rooftop deck
- Designated parking lot across the street with several public lots nearby
- Walkable area to a variety of nearby restaurants, retail shops, hotels, cultural landmarks, and Richmond's Canal Walk
- Easy PULSE & GRTC accessibility



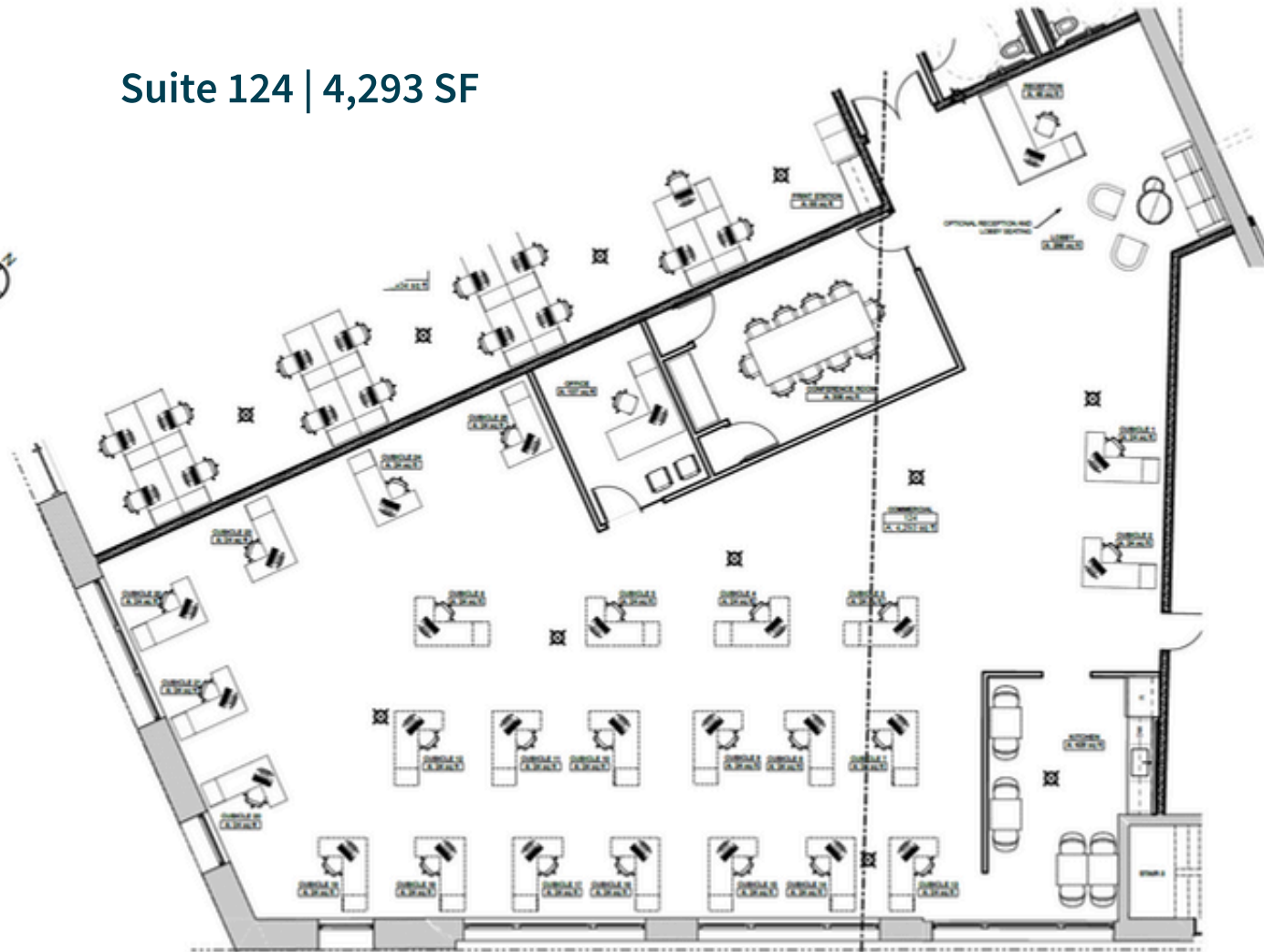
Suite 121 | 3,252 SF



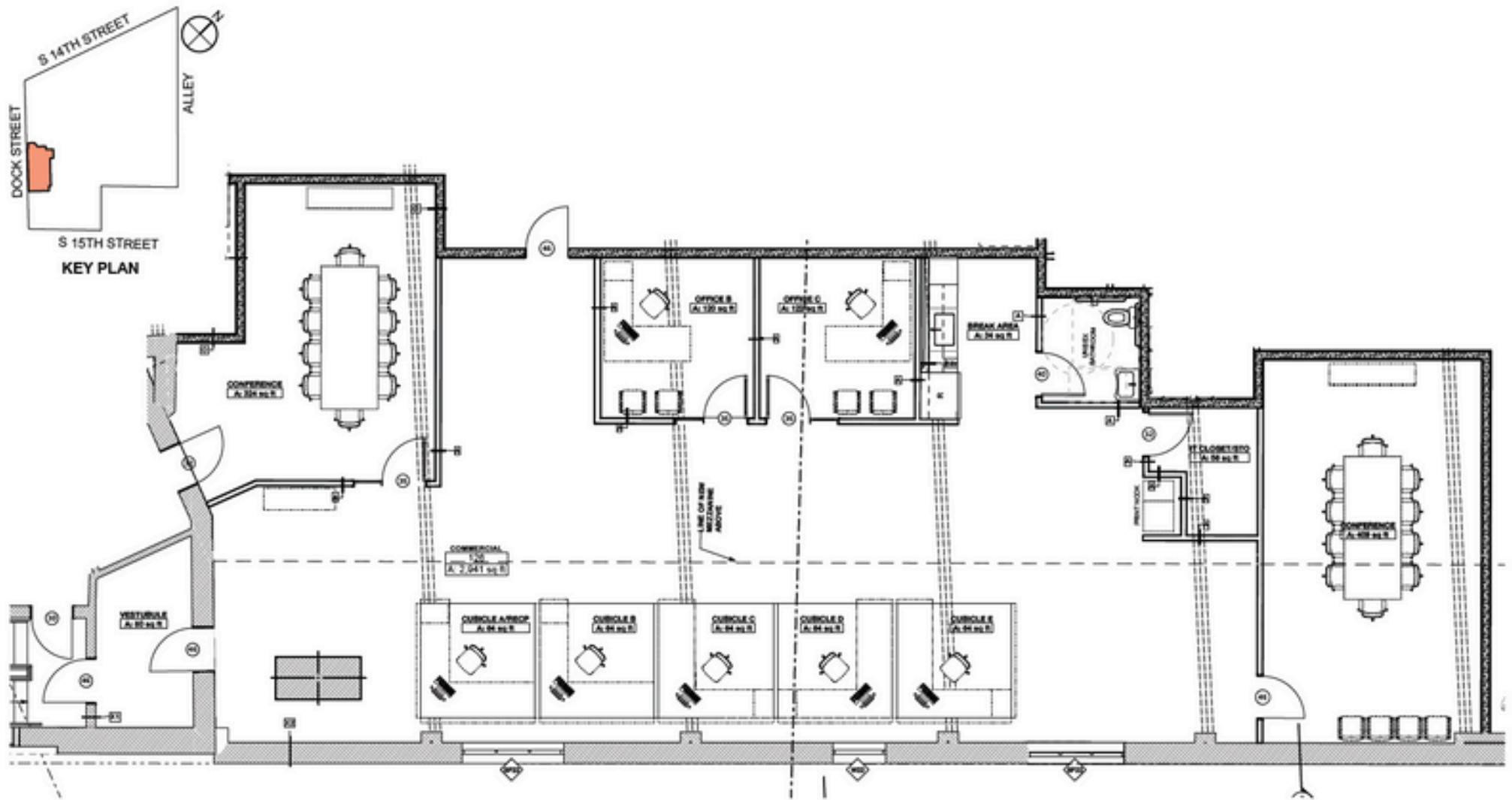
Suite 122
2,654 SF

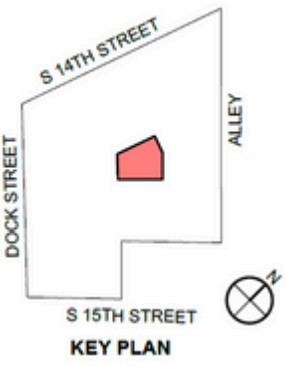


Suite 124 | 4,293 SF

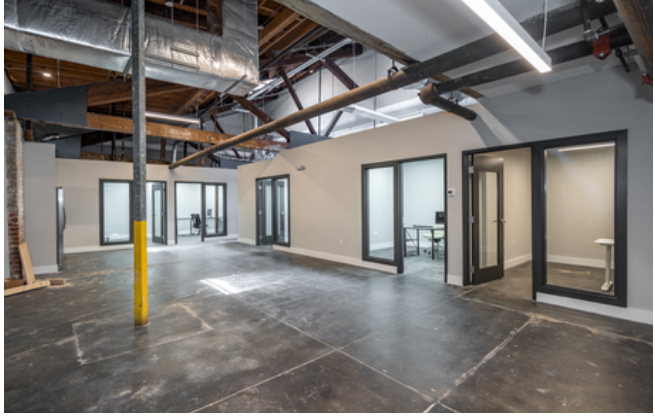
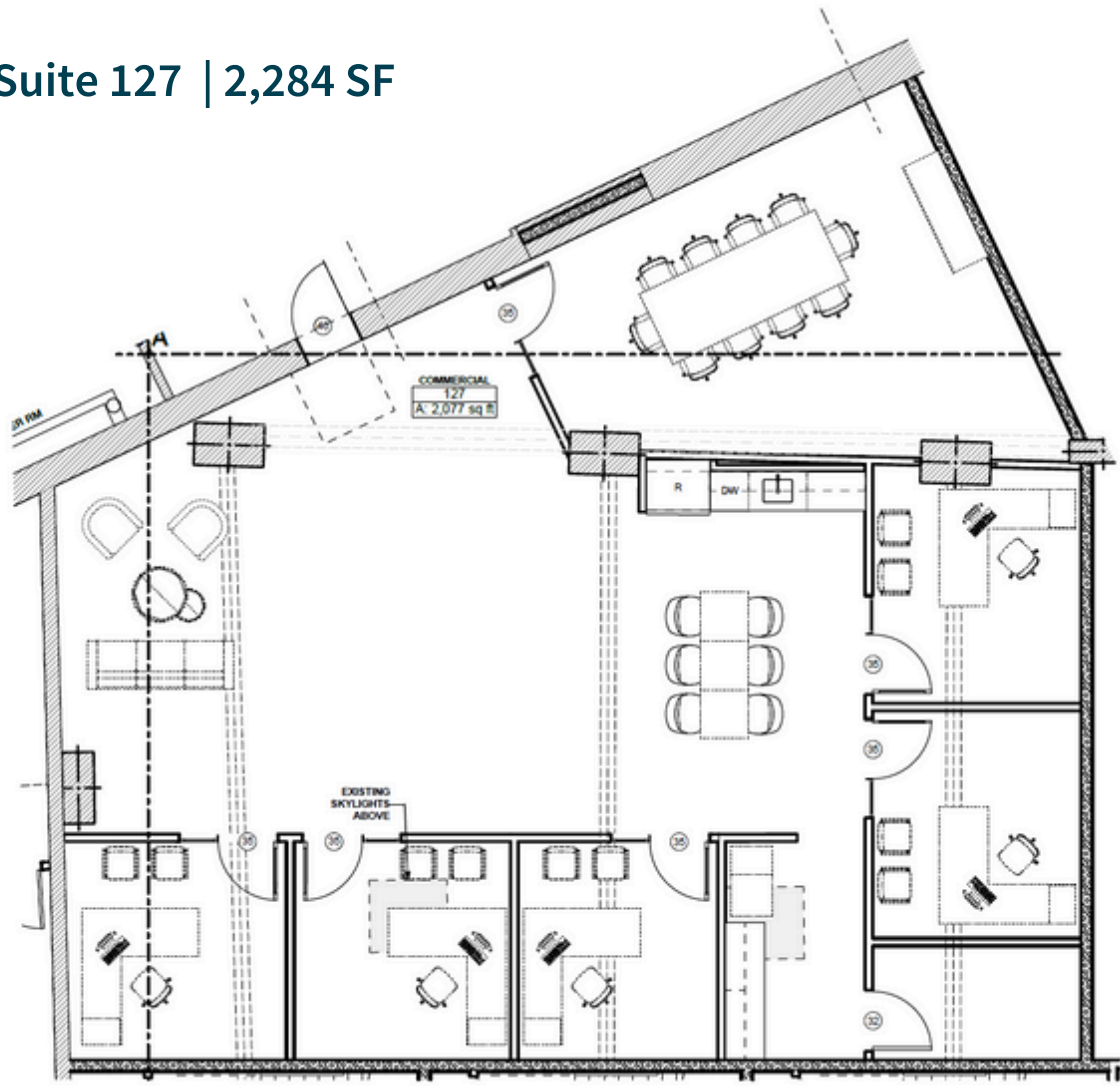


Suite 126 | 2,950 SF



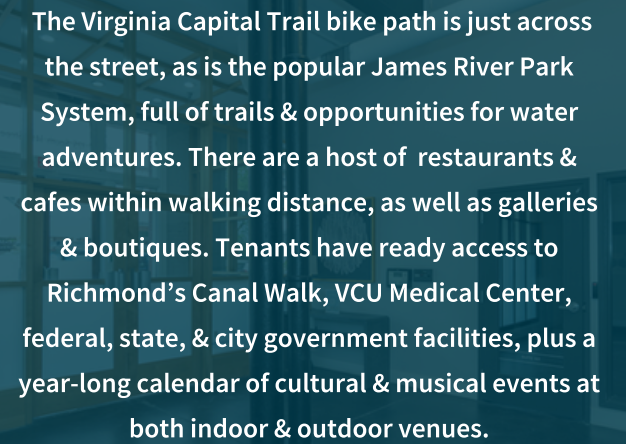


Suite 127 | 2,284 SF





Located in the heart
of Shockoe Slip!



The Virginia Capital Trail bike path is just across the street, as is the popular James River Park System, full of trails & opportunities for water adventures. There are a host of restaurants & cafes within walking distance, as well as galleries & boutiques. Tenants have ready access to Richmond's Canal Walk, VCU Medical Center, federal, state, & city government facilities, plus a year-long calendar of cultural & musical events at both indoor & outdoor venues.





The Pit &
The Peel

Omni
Hotel

Native Plate

Urban Farmhouse
Market & Cafe

Westham
Tavern

The Tobacco
Company

Soul Taco

Mom's Siam 2

Jimmy
John's

Residence Inn
by Marriott

Europa Crust

Sine Irish Pub

Sprezza

Southern Railway
Taphouse

125 S. 14TH
STREET

The Hard Shell



Kaylin Farruggio

kaylin.farruggio@jll.com

+1 (804) 802 6125

jll.com

John Jay Schwartz MCR, RPS, IBC

jjschwartz@havesitewilltravel.com

+1 (804) 350 1866

TheManwithSquareFeet.com

Jones Lang LaSalle Americas, Inc.