



# *Barothy* **LODGE**

One-of-a-Kind ±266 AC Wilderness Retreat  
along the Pere Marquette River For Sale  
Walhalla, MI



# PROPERTY HIGHLIGHTS

[Click to watch the video](#)

## Overview



**19 private lodges on the Pere Marquette River, from 1 bedroom to 9 1/2 bedrooms**

- Wi-fi available at hot spots
- Each lodge has a fully-equipped kitchen, washer and dryer, gas fireplace, deck, hot tub, screened porch and outdoor grill
- On-site 1,500 SF Event Hall



## Location

- Barothy Road, Walhalla, MI



## Seasonal activities

- Spring – Steelhead fishing
- Summer – Kayaking & hiking
- Fall – Salmon fishing
- Winter – Nordic skiing



## On ground amenities

- Riverfront properties
- Swimming pool
- Fire pits
- Hiking and skiing trails
- Tennis courts
- Sand volleyball courts
- Children's playground
- Fishing ponds
- Preserved wetland
- Shuffleboard
- Climbing wall
- Horseshoes
- Basketball court

## Barothy Lodge on the Pere Marquette River

- |                           |                        |                          |
|---------------------------|------------------------|--------------------------|
| 1. Office                 | Old Canoe Shed         | Manistee National Forest |
| 2. Long Lodge             | Horseshoe Pits         | Green Trail 1.9 miles    |
| 3. Log Cabin              | Playground             | Red Trail 1.1 miles      |
| 4. Main Lodge             | Tennis Courts          | Aqua Trail 2.29 miles    |
| 5. Duffy's                | Shuffleboard           | Yellow Trail 3.2 miles   |
| 6. Bird House             | 1/2 Basketball Court   | Blue Trail .57 miles     |
| 7. Whitetail              | Fire Pit               | Orange Trail .31 miles   |
| 8. Elkhorn                | Pool                   | Walking Path             |
| 9. Eagle Nest             | Volleyball Courts      | Stairs                   |
| 10. Beaver                | Mineral Springs Gazebo |                          |
| 11. Turkey                | Viewing Bridge         |                          |
| 12. Rainbow               | Teepee                 |                          |
| 13. Yellow Cabin          | Bald Eagle Nest        |                          |
| 14. Gray Hawk             |                        |                          |
| 15. Riverbend             |                        |                          |
| 16. Steelhead             |                        |                          |
| 17. Chinook               |                        |                          |
| 18. Cedar                 |                        |                          |
| 19. Spruce                |                        |                          |
| 20. Fish Cleaning Station |                        |                          |
| 21. McCormick's Cabin     |                        |                          |



Founded in 1889 as a health retreat by Dr. Arpad Barothy, Barothy Lodge has evolved into a year-round wilderness getaway spanning ±266 acres in Michigan's Manistee National Forest, offering a serene escape along the Pere Marquette River. Today, the property features nineteen (19) private lodges with modern amenities, while preserving its natural charm and offering activities like hiking, fishing, and canoeing, continuing its century-old tradition of providing a peaceful retreat from everyday life.

# PROPERTY BREAKDOWN

CABIN NAME	BEDROOM/BATH COUNT	FEATURES	AREA
Whitetail Lodge	9.5/4	4 queens, 11 twins + trundle bed Full kitchen, fireplace, hot tub, sauna, pool table, washer and dryer	FIRST FLOOR 3,021 SF SECOND FLOOR/MEZZ 1,753 SF TOTAL: 4,773 SF
Elkhorn Lodge	8.5/4	4 queens, 9 twins, 1 trundle Full kitchen, fireplace, hot tub, pool table, washer and dryer	FIRST FLOOR 2,659 SF SECOND FLOOR/MEZZ 1,709 SF TOTAL: 4,367 SF
Long Lodge	8/4	3 queens, 10 twins Full kitchen, gas fireplace, hot tub, pool table, washer and dryer Originally built in 1930	FIRST FLOOR 2,058 SF SECOND FLOOR/MEZZ 1,400 SF TOTAL: 3,458 SF
Main Lodge	6.5/4	1 queen bed, 5 full beds , loft with 8 twin beds Full kitchen, fireplace, hot tub, pool table, washer and dryer Doc Barothy's original turn-of-the-century farm house The Event Space adjoins Main Lodge at the ground floor	BASEMENT 1,127 SF FIRST FLOOR 3,385 SF SECOND FLOOR/MEZZ 1,243 SF THIRD FLOOR 516 SF TOTAL: 6,271 SF
Bird House	6/3	2 queens, 9 twins Full kitchen, fireplace, hottub, pool table, washer and dryer	BASEMENT 1,015 SF FIRST FLOOR 1,386 SF SECOND FLOOR/MEZZ 630 SF TOTAL: 3,030 SF
Beaver Lodge	6/3	2 queens, 8 twins Full kitchen, fireplace, hot tub, pool table, washer and dryer	BASEMENT 1,196 SF FIRST FLOOR 1,060 SF SECOND FLOOR/MEZZ 493 SF TOTAL: 2,749 SF
Turkey Lodge	6/3	2 queens, 8 twins Full kitchen, fireplace, hot tub, pool table, washer and dryer	BASEMENT 1,164 SF FIRST FLOOR 1,086 SF SECOND FLOOR/MEZZ 483 SF TOTAL: 2,733 SF
Rainbow Lodge	6/3	2 queens, 8 twins Full kitchen, fireplace, hot tub, pool table, washer and dryer	FIRST FLOOR 1,380 SF SECOND FLOOR/MEZZ 1,191 SF TOTAL: 2,571 SF
Steelhead Lodge	6/3	2 queens, 8 twins Full kitchen, gas fireplace, hot tub, pool table, washer and dryer Built by a shipbuilder in the early 1900's	FIRST FLOOR 1,187 SF SECOND FLOOR/MEZZ 1,630 SF TOTAL: 2,817 SF



# PROPERTY BREAKDOWN

CABIN NAME	BEDROOM/BATH COUNT	FEATURES	AREA
Gray Hawk Lodge	4.5/3	2 queens, 7 twins Full kitchen, fireplace, hot tub, pool table, washer and dryer Private swimming pool	FIRST FLOOR 3,021 SF SECOND FLOOR/MEZZ 1,753 SF TOTAL: 4,773 SF
Eagles Nest Lodge	4/3	2 kings, 4 twins Full kitchen, fireplace, hot tub, pool table, washer and dryer	FIRST FLOOR 2,659 SF SECOND FLOOR/MEZZ 1,709 SF TOTAL: 4,367 SF
Chinook Lodge	4/3	2 kings, 4 twins Full kitchen, fireplace, hot tub, pool table, washer and dryer Sits at the end of the road, making this an especially private lodge	FIRST FLOOR 2,058 SF SECOND FLOOR/MEZZ 1,400 SF TOTAL: 3,458 SF
Riverbend Lodge	4/3	1 king, 1 queen, 4 twins Full kitchen, gas fireplace, hot tub, pool table, washer and dryer	BASEMENT 1,127 SF FIRST FLOOR 3,385 SF SECOND FLOOR/MEZZ 1,243 SF THIRD FLOOR 516 SF TOTAL: 6,271 SF
Duffy's Lodge	4/2	2 queen bed, 4 twin beds Full kitchen, fireplace, hot tub, pool table, washer and dryer	BASEMENT 1,015 SF FIRST FLOOR 1,386 SF SECOND FLOOR/MEZZ 630 SF TOTAL: 3,030 SF
Yellow Cabin Lodge	4/2	2 queen bed, 4 twin beds Full kitchen, fireplace, hot tub, pool table, washer and dryer	FIRST FLOOR 2,091 SF SECOND FLOOR/MEZZ 775 SF TOTAL: 2,865 SF
Cedar Lodge	2/2	2 Bedrooms Full kitchen, fireplace, hot tub, pool table, washer and dryer	FIRST FLOOR 1,641 SF TOTAL: 1,641 SF
Spruce Lodge	2/2	2 Bedrooms Full kitchen, fireplace, hot tub, pool table, washer and dryer	FIRST FLOOR 1,641 SF TOTAL: 1,641 SF
Log Cabin Lodge	1/1	1 king bed Full kitchen, fireplace Beautiful view of the big pond with ducks and geese	BASEMENT 312 SF FIRST FLOOR 404 SF TOTAL: 716 SF
Event Space	1,500 SF	Able to Accommodate Parties of 150 Adjoins the Ground Floor of the Main Lodge	





# PHOTO GALLERY





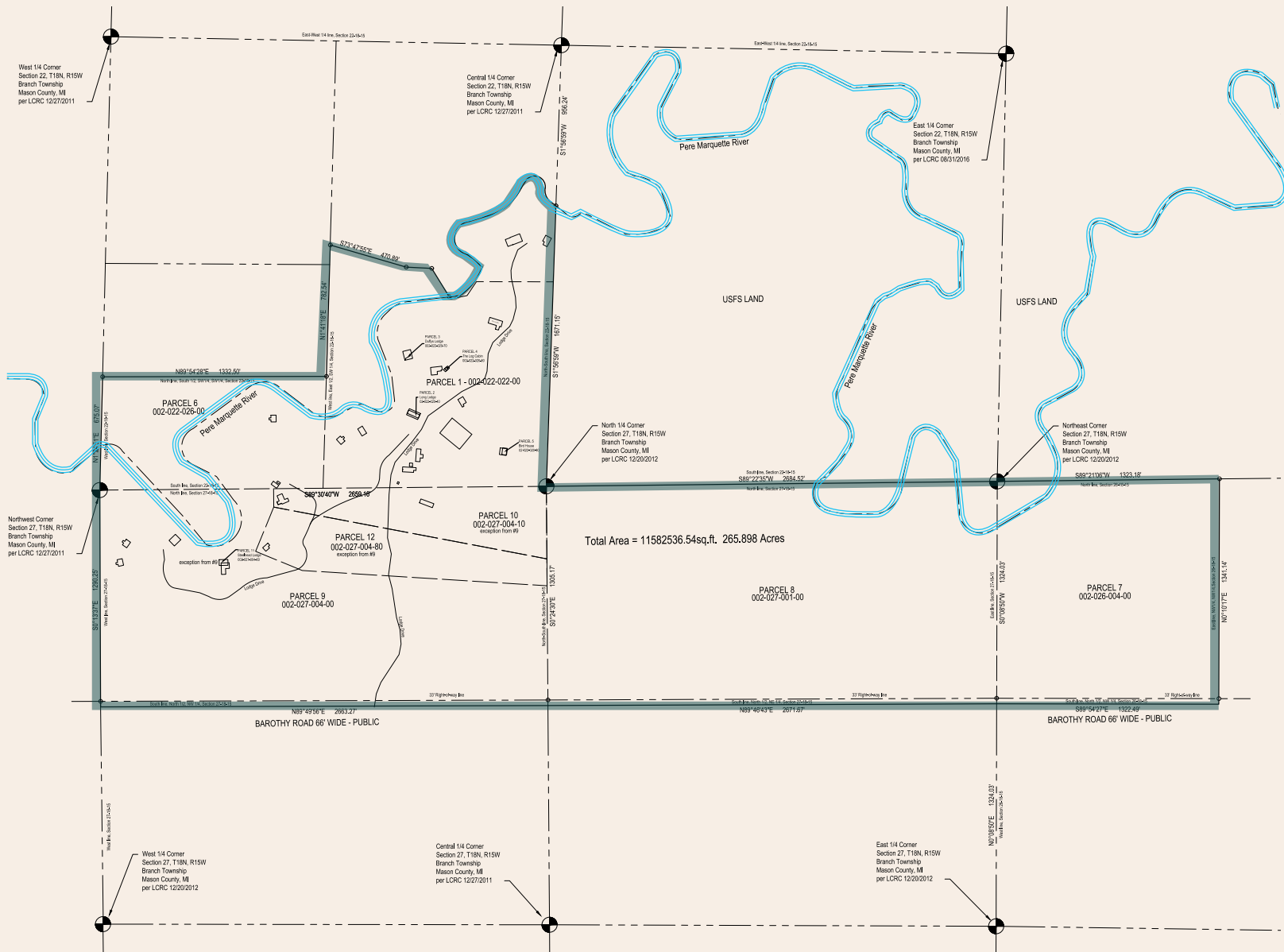
# ABOUT THE AREA



The Pere Marquette River, stretching approximately 66 miles, holds the distinction of being the longest river in Michigan's Lower Peninsula. Renowned for its exceptional fishing opportunities, it stands as one of Michigan's premier fly-fishing destinations. Anglers flock to its waters in pursuit of steelhead, salmon, and brown trout, making it a paradise for fishing enthusiasts. The river's journey takes it through the picturesque Manistee National Forest, offering breathtaking scenery along its course. Beyond fishing, the river is a haven for outdoor enthusiasts, with canoeing and kayaking being popular recreational activities that allow visitors to immerse themselves in the natural beauty of this remarkable waterway.

[Click here to view River Cam](#)

±7,400' OF PERE MARQUETTE RIVER FRONTAGE







## CONTACT

**Chip Hurley, SIOR, CCIM**

Senior Vice President

T +1 616 304 5410

[chip.hurley@jll.com](mailto:chip.hurley@jll.com)

**Bob Horn, SIOR**

Executive Vice President

T +1 616 649 3533

[bob.horn@jll.com](mailto:bob.horn@jll.com)

**John Nugent**

Managing Director, Hotels

T +1 312 420 8602

[john.nugent@jll.com](mailto:john.nugent@jll.com)

Although information has been obtained from sources deemed reliable, neither Owner nor JLL makes any guarantees, warranties or representations, express or implied, as to the completeness or accuracy as to the information contained herein. Any projections, opinions, assumptions or estimates used are for example only. There may be differences between projected and actual results, and those differences may be material. The Property may be withdrawn without notice. Neither Owner nor JLL accepts any liability for any loss or damage suffered by any party resulting from reliance on this information. If the recipient of this information has signed a confidentiality agreement regarding this matter, this information is subject to the terms of that agreement.  
©2025 Jones Lang LaSalle IP, Inc. All rights reserved.

