

2,850 SF FOR LEASE

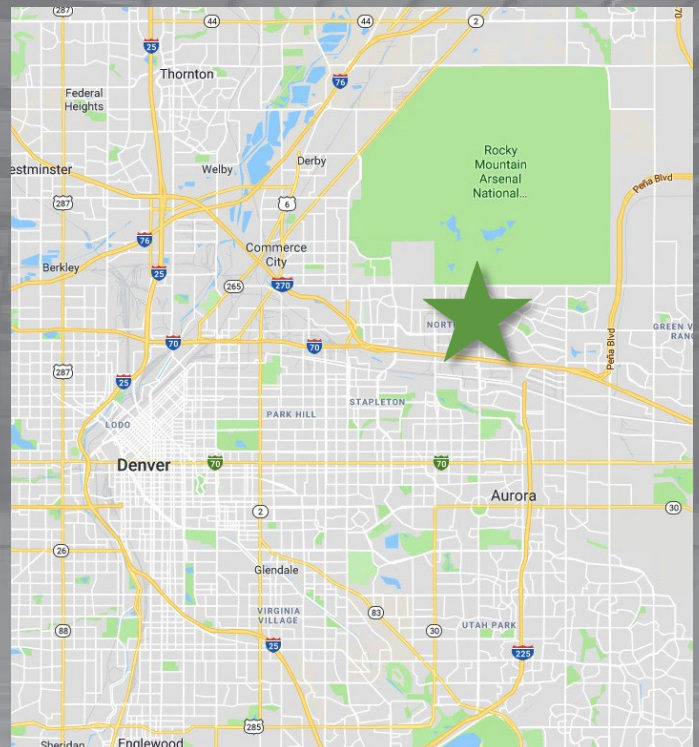


12055 E 49th Avenue Unit C Denver, CO

Stapleton East industrial park features easy access to I-70, visibility off of Peoria Street, front park/rear load and mature landscaping.

Highlights

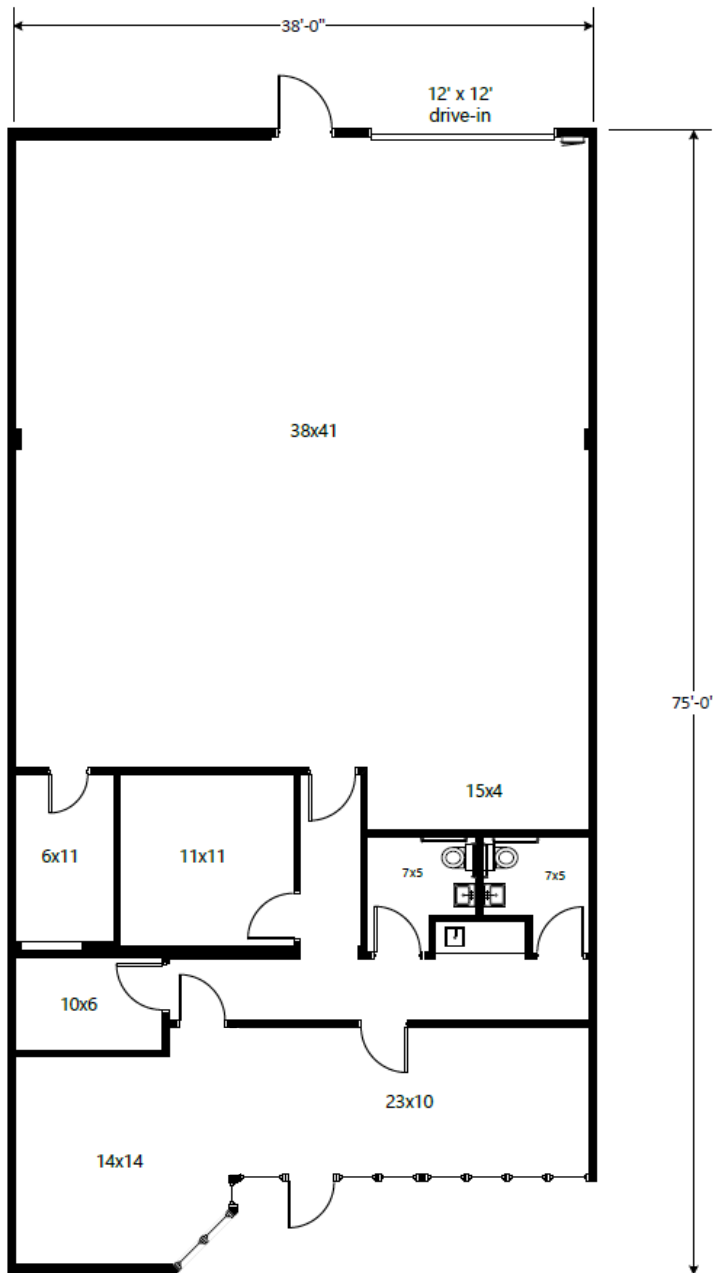
Available:	Immediately
Available SF:	2,850
Office SF:	1,195
Warehouse SF:	1,655
Base Rent:	\$10.75/SF NNN
2025 CAM:	\$5.36/SF
Monthly Rent:	\$3,826.13
Number of Docks:	None
Drive In:	One (1) 12'x12'
Clear Height:	18' 0"
Sprinklered:	No
Power:	3 phase



Stapleton East

12055 E 49th Avenue, Unit C, Denver,
CO

Space Plan



Unit C
2,850 SF

Broker Contact

Carmon Hicks, SIOR
(303) 217-7975
carmon.hicks@jll.com

Jason White
(303) 390-5200
jason.white@jll.com

Andy Moore
(720) 219-0368
andy.moore@jll.com



www.jll.com

Owner Contact

John Strabel
Senior Regional Director
8200 Park Meadows Drive, Unit
8226 Lone Tree, CO 80124
Direct: (248) 894-3974
jstrabel@firstindustrial.com



www.firstindustrial.com