

For Sale or Lease

0 Spring St | Mars, PA 16406



Highlights

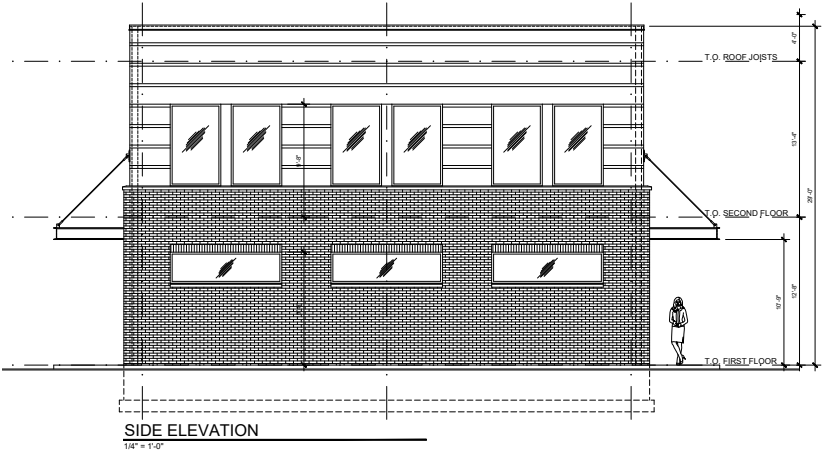
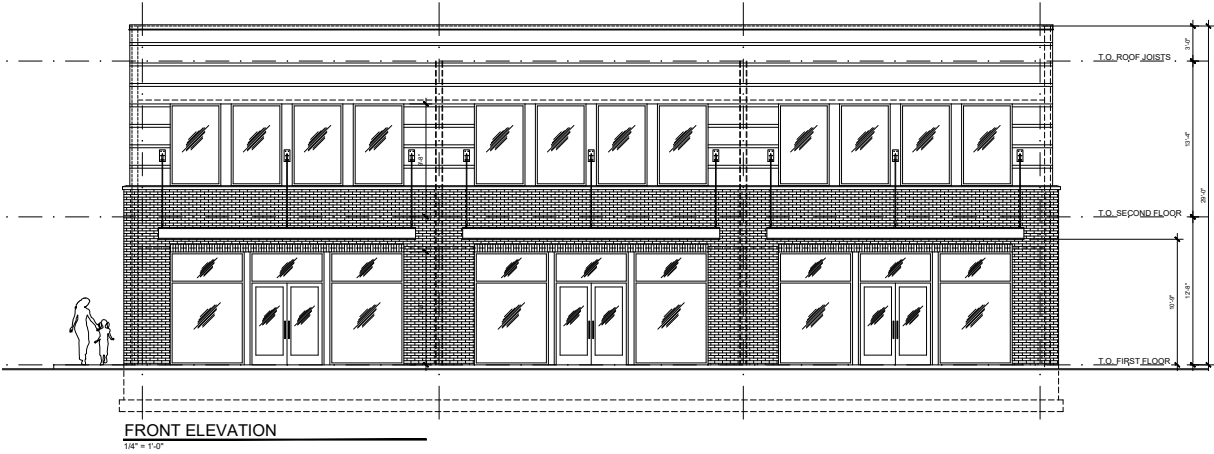
- New construction in growing area located in Adams Township / Mars, PA
- Pylon / building signage opportunities
- 2-story 7,200 SF building planned
- Excellent frontage and visibility
- Ample parking
- .71 acres

Jose Raymundo
Vice President
jose.raymundo@jll.com
+1 412 720 0102

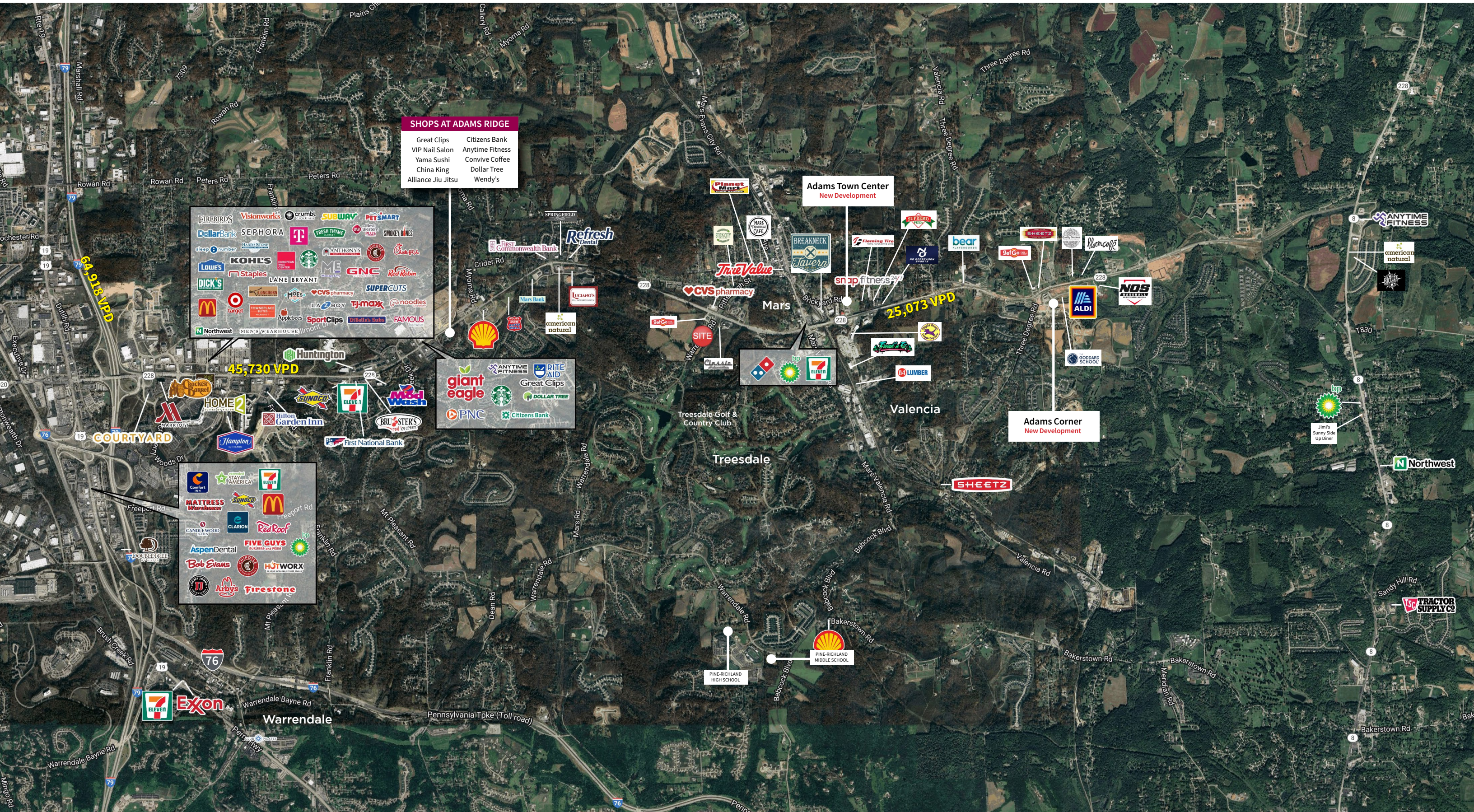
jll.com



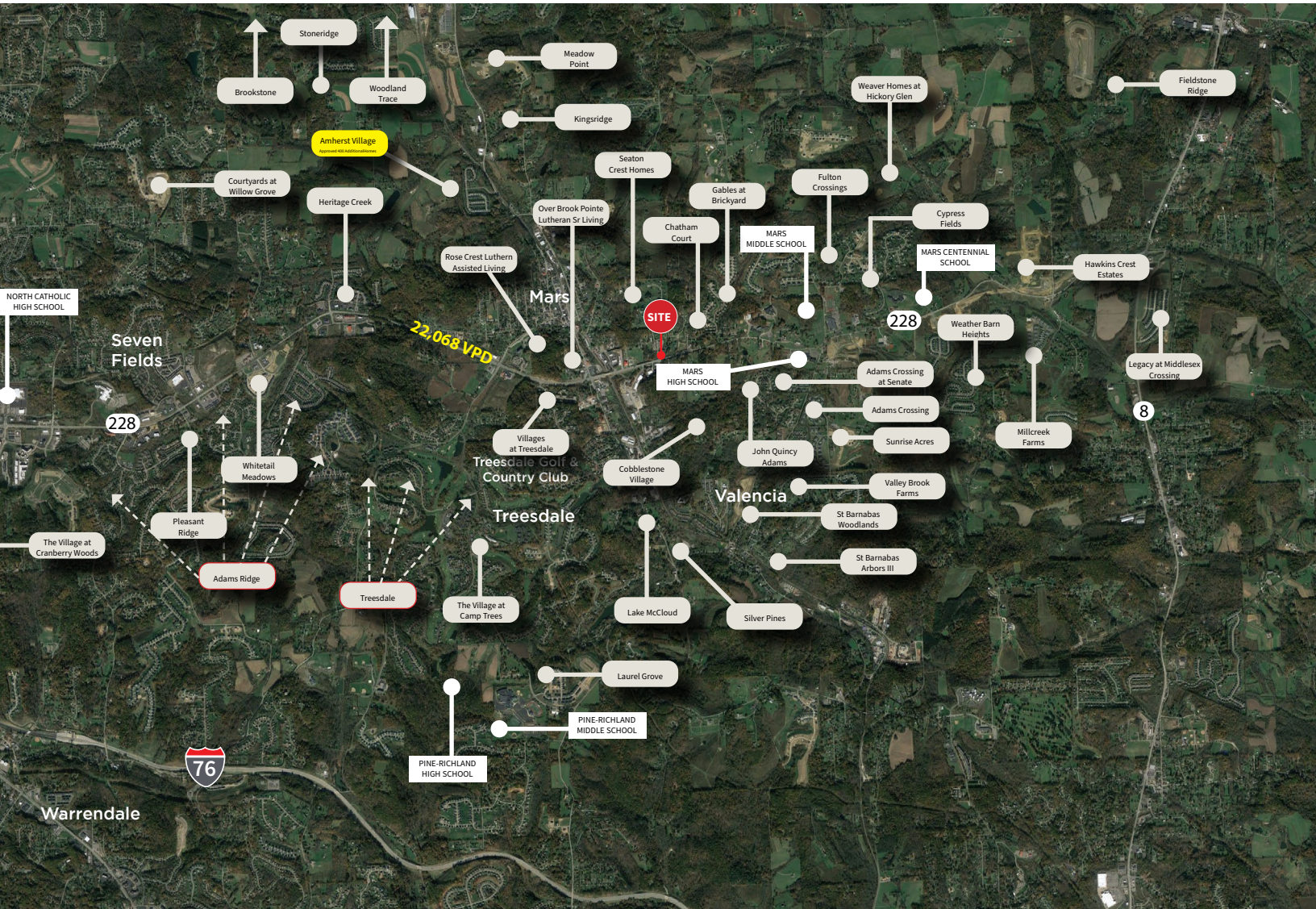
Renderings



Trade area



Housing and newer developments in the area



Demographics within a 3-mile radius

Population	Median Age	Households	Average Household Income
20,841	44.1	7,659	\$182,240

Although information has been obtained from sources deemed reliable, JLL does not make any guarantees, warranties or representations, express or implied, as to the completeness or accuracy as to the information contained herein. Any projections, opinions, assumptions or estimates used are for example only. There may be differences between projected and actual results, and those differences may be material. JLL does not accept any liability for any loss or damage suffered by any party resulting from reliance on this information. If the recipient of this information has signed a confidentiality agreement with JLL regarding this matter, this information is subject to the terms of that agreement. ©2025. Jones Lang LaSalle IP, Inc. All rights reserved.