



For lease

1201 Chestnut Street
Philadelphia, PA 19107

Market East | Midtown Village
Retail/Office Space





Property highlights:

- 2,662 SF Retail / Office Space
- Double height entry
- Excellent visibility and signage opportunities
- High population density and daily foot traffic
- Convenient access to public transportation, nearby restaurants, hotels, boutiques and more
- Adjacent to Thomas Jefferson University Hospital system, one of the largest employers in Philadelphia

Demographics 2024:



Median Age | 34



Median Income | \$122,202



Median Employees | 113,658



Median Population | 25,175



College Students | 23,850



Walk Score | 100



Transit Score | 100



Bike Score | 100



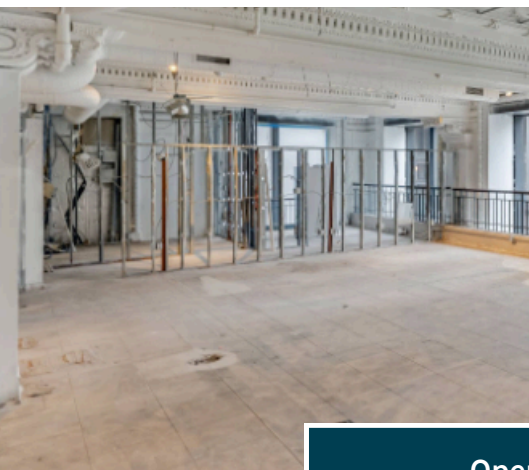


Floorplans:

Second floor
2,091 SF

Total
2,662 SF

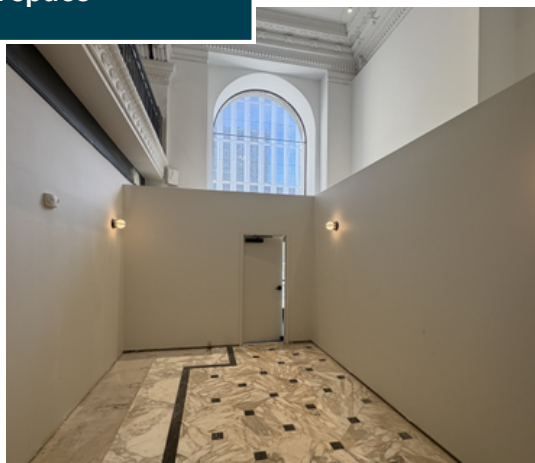
Ground floor
571 SF



Open space

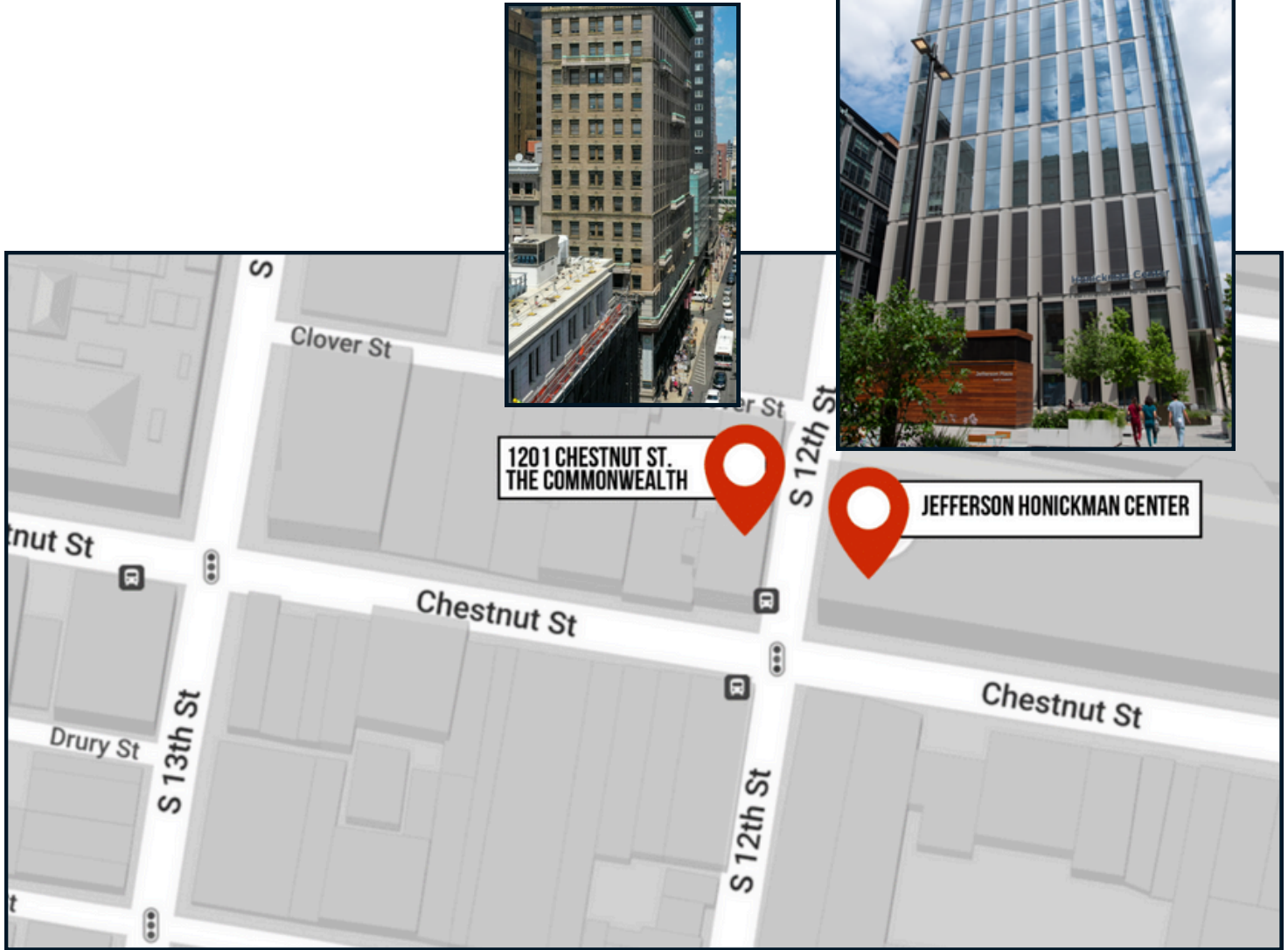


Potential fitness studio, physical therapy or physicians office





Jefferson Honickman Center



Rising as the third tallest structure east of Broad Street, the Jefferson University-affiliated Honickman Center stands at the heart of over \$1 billion in urban development projects in East Market. The building is complemented by a newly constructed plaza, featuring attractive landscaping and abundant seating areas. This impressive facility reshapes the Center City skyline while revitalizing and invigorating the East Market corridor.

For more information please contact:

Frederick Durham Jr.

Associate

O +1 908 943 7010

frederick.durham@jll.com

Alex Breitmayer

Managing Director

O +1 215 988 5500

alex.breitmayer@jll.com