



For sublease at 14001 East Iliff

Building: 14001 East Iliff

- 7th floor
- 25,266 sf
- LXD 12/31/2025
- 5/1000 parking
- Great mountain views

Building Details

- On-site security
- Easy access to I-225
- Adjacent to Iliff Station for RTD Light Rail access
- Outdoor seating



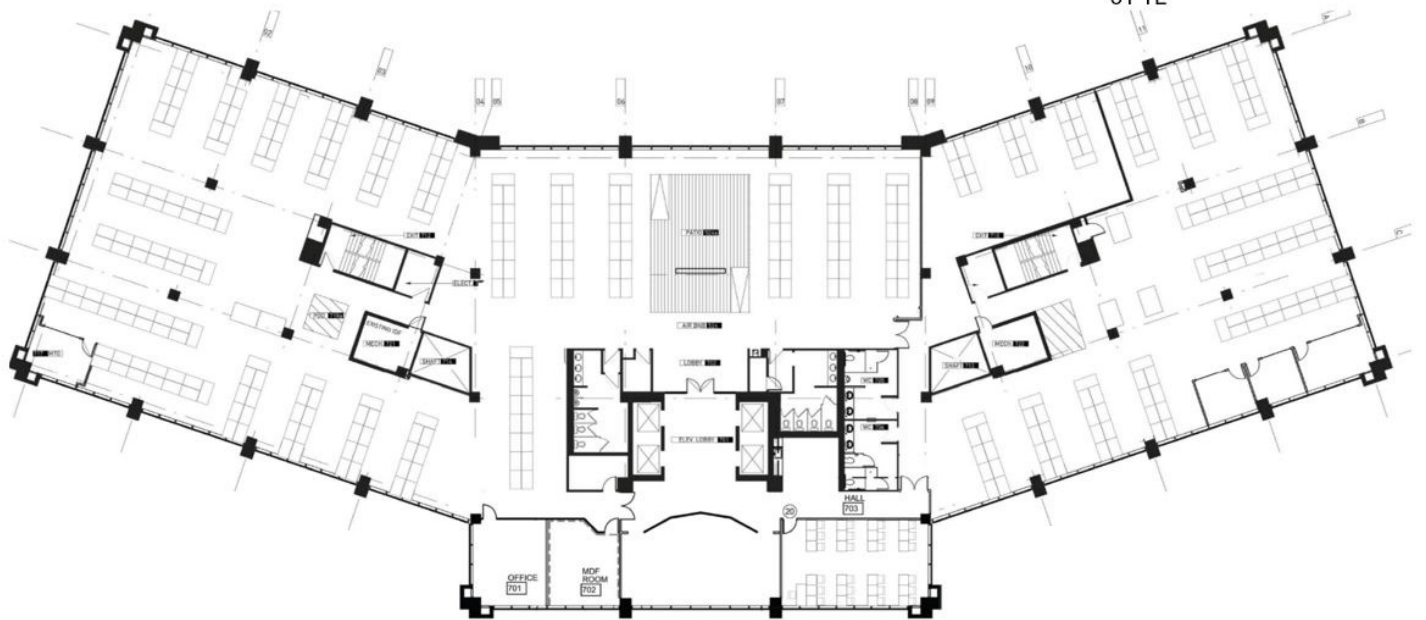
7th Floor

25,266 sf

DENVER 7TH FLOOR

336 Agents

31 TL





For more information, please contact:

Janessa Biller

+1 303 260 6532
janessa.biller@jll.com

Dan McGowan

+1 720 256 4601
dan.mcgowan@jll.com

Tim Bourdelais

+1 303 390 5203
tim.bourdelais@jll.com

Guy Lachman

+1 303 542 1516
guy.lachman@jll.com

Although information has been obtained from sources deemed reliable, neither Owner nor JLL makes any guarantees, warranties or representations, express or implied, as to the completeness or accuracy as to the information contained herein. Any projections, opinions, assumptions or estimates used are for example only. There may be differences between projected and actual results, and those differences may be material. The Property may be withdrawn without notice. Neither Owner nor JLL accepts any liability for any loss or damage suffered by any party resulting from reliance on this information. If the recipient of this information has signed a confidentiality agreement regarding this matter, this information is subject to the terms of that agreement. ©2024. Jones Lang LaSalle IP, Inc. All rights reserved.

