

**For Sublease**  
**±13,529 SF**

# **The Crossroads at 4S Ranch**

## **10946-10948 Willow Court**

San Diego, CA 92127

**Andy Irwin**

Managing Director  
+1 858 410 6376  
andy.irwin@jll.com  
RE License #01302674

**Greg Lewis**

Managing Director  
+1 858 410 1251  
greg.lewis@jll.com  
RE License #01365602

**Jackson Childers**

Associate  
+1 858 352 2905  
jackson.childers@jll.com  
RE License #02224366



Jones Lang LaSalle Brokerage, Inc. RE lic. #01856260



# Property Features

High image two building warehouse, distribution, manufacturing project located in 4S Ranch

±13,529 SF Available

3 Dock high doors

24' clear height

800 amps/480v power (tenant to verify)

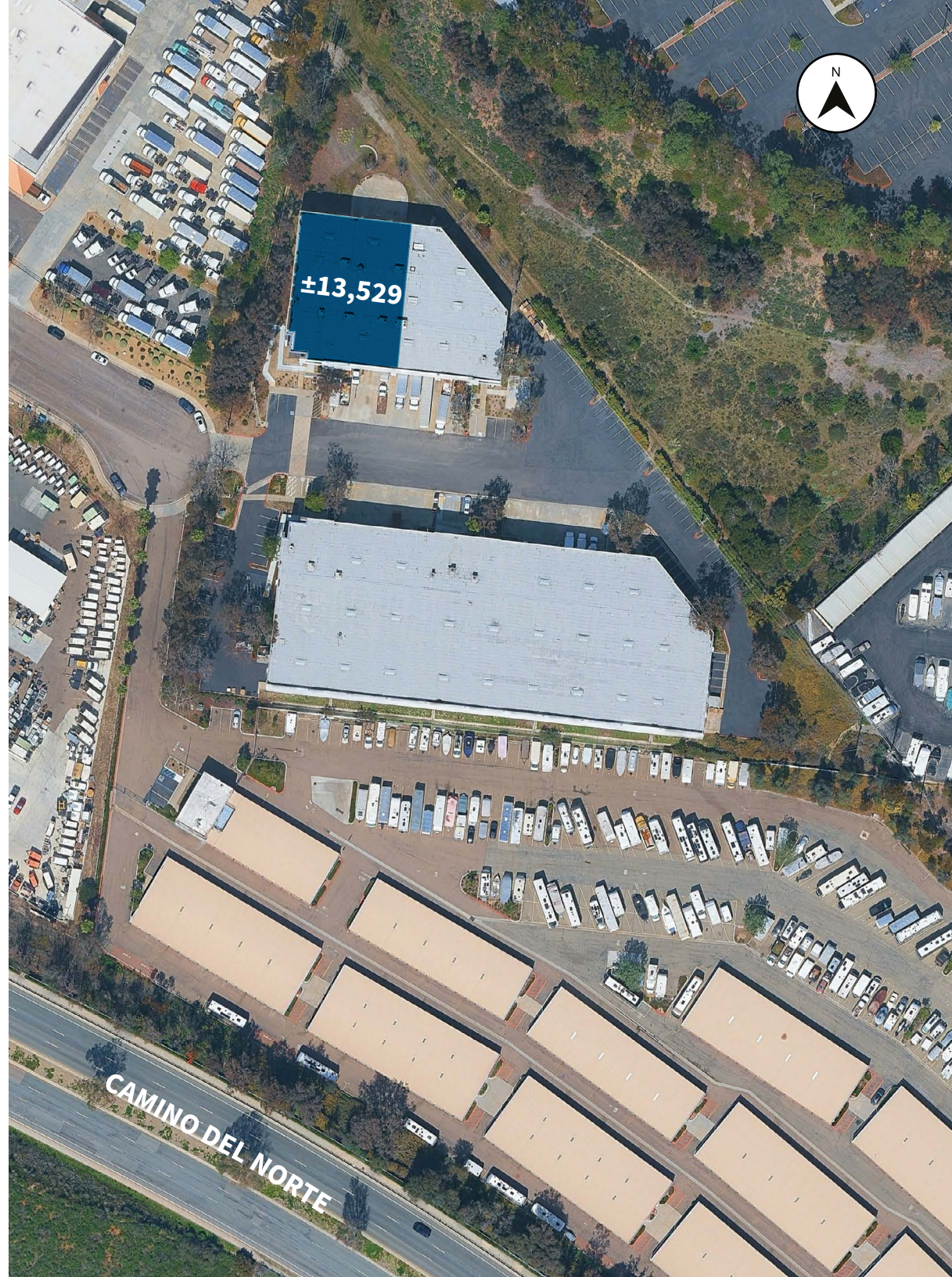
Fully sprinklered

Concrete truck court

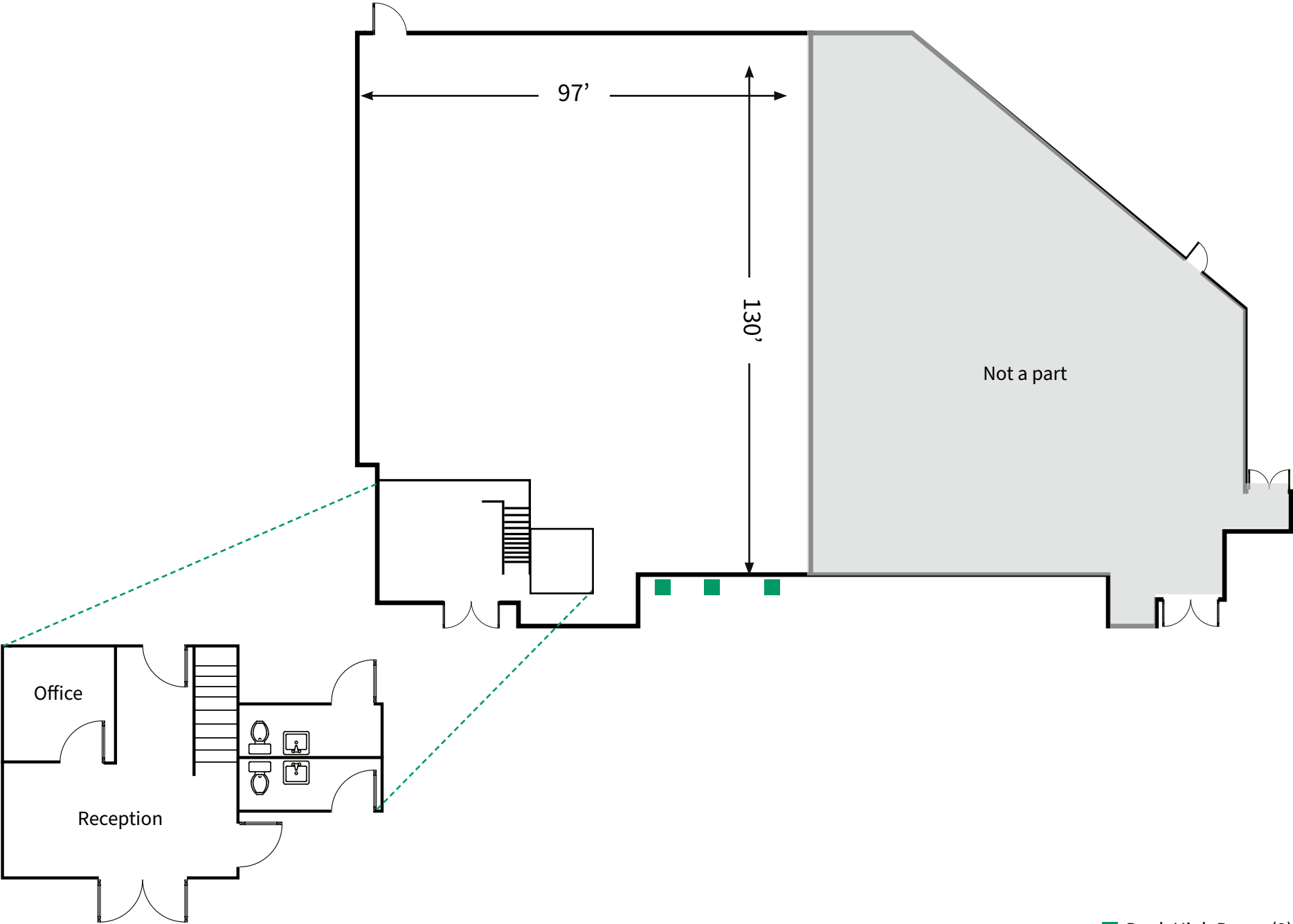
Convenient access to I-15 and Highway 56

Sublease expiration November 30, 2028

**Contact broker for lease rate**



# Site & Floor Plan

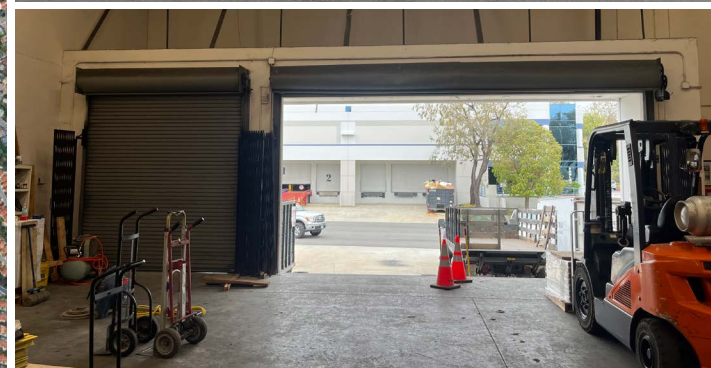


■ Dock High Doors (3)





**The  
Crossroads  
@ 4S Ranch**



## Contact

**Andy Irwin**  
Managing Director  
+1 858 410 6376  
andy.irwin@jll.com  
RE License #01302674

**Greg Lewis**  
Managing Director  
+1 858 410 1251  
greg.lewis@jll.com  
RE License #01365602

**Jackson Childers**  
Associate  
+1 858 352 2905  
jackson.childers@jll.com  
RE License #02224366

Although information has been obtained from sources deemed reliable, neither Owner nor JLL makes any guarantees, warranties or representations, express or implied, as to the completeness or accuracy as to the information contained herein. Any projections, opinions, assumptions or estimates used are for example only. There may be differences between projected and actual results, and those differences may be material. The Property may be withdrawn without notice. Neither Owner nor JLL accepts any liability for any loss or damage suffered by any party resulting from reliance on this information. If the recipient of this information has signed a confidentiality agreement regarding this matter, this information is subject to the terms of that agreement. ©2025. Jones Lang LaSalle IP, Inc. All rights reserved.

