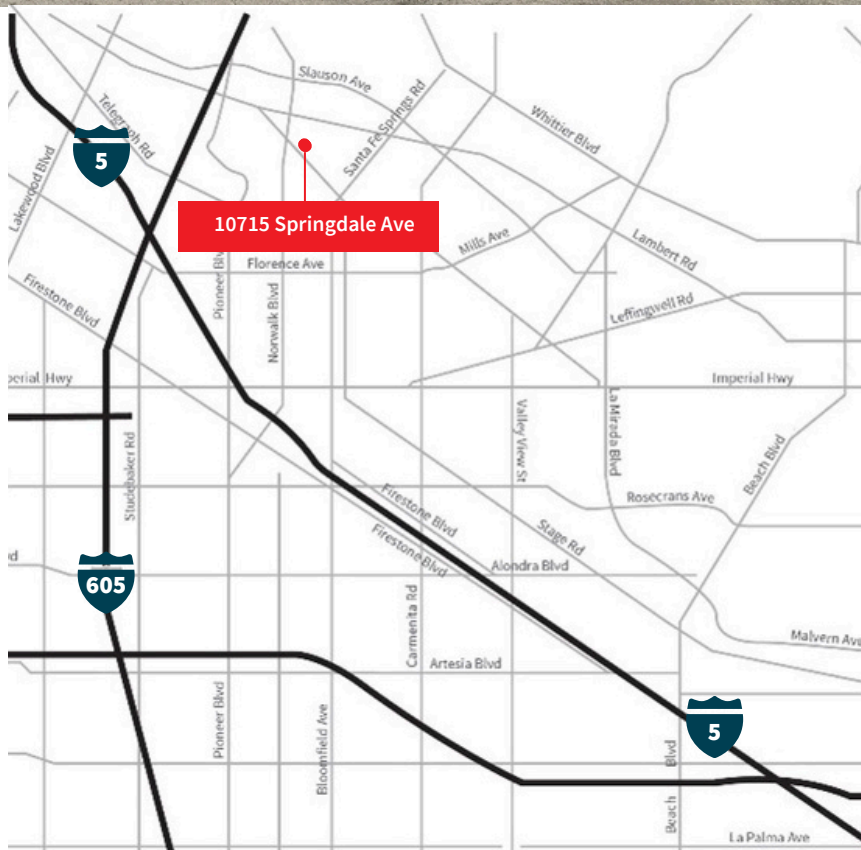


For lease

10715 Springdale Ave, Units 2 & 3
Santa Fe Springs, CA 90670



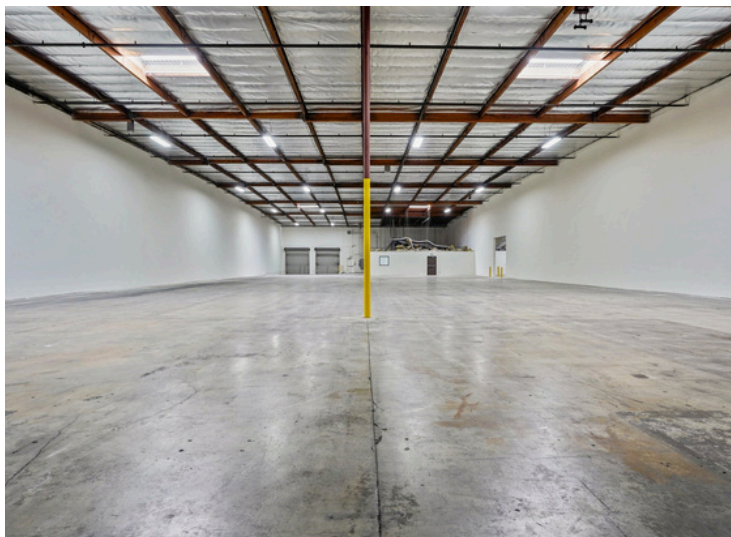
| | |
|-------------------------|----------------------------------|
| Building size | 28,800 SF |
| Office size | 2,823 SF |
| Clear height | 22' |
| Sprinkler system | .33/3,000 GPM calculated |
| Loading | 4 DH with edge of dock levelers |
| Power | 450 amps, 277/480 volts (verify) |
| Available SF | Divisible to two 14,400 SF units |
| Asking rate | TBD |



Interior Photos



Warehouse Photos

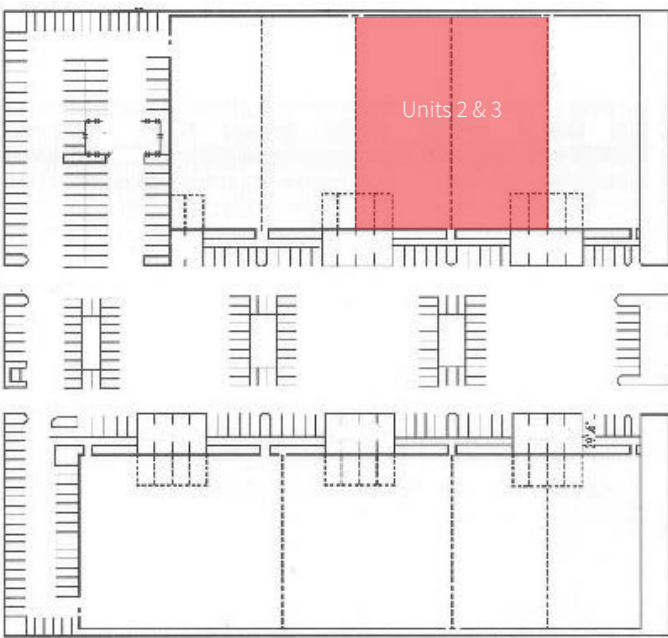


Exterior Photo

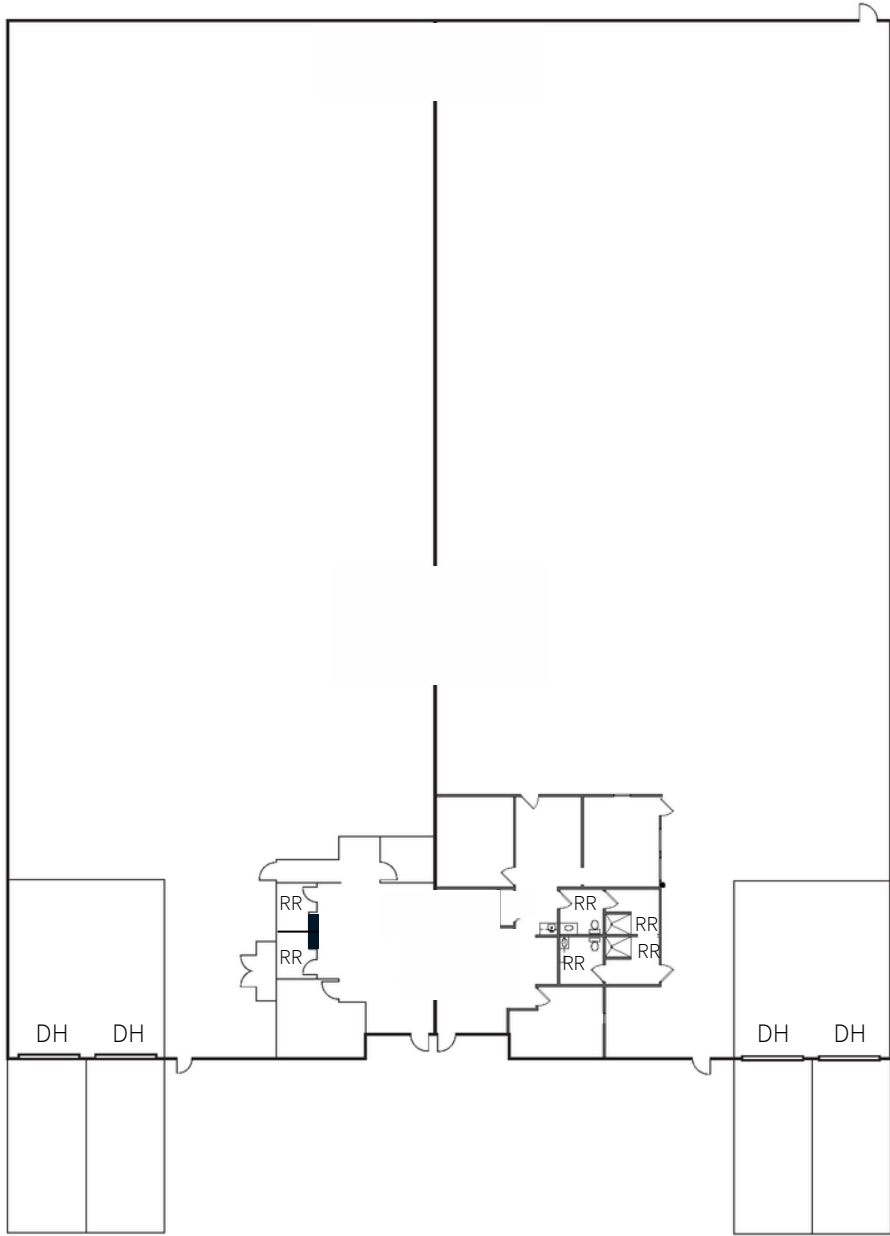


10715 Springdale Ave, Units 2 & 3
Santa Fe Springs

10715 Springdale



10725 Springdale



Although information has been obtained from sources deemed reliable, neither Owner nor JLL makes any guarantees, warranties or representations, express or implied, as to the completeness or accuracy as to the information contained herein. Any projections, opinions, assumptions or estimates used are for example only. There may be differences between projected and actual results, and those differences may be material. The Property may be withdrawn without notice. Neither Owner nor JLL accepts any liability for any loss or damage suffered by any party resulting from reliance on this information. If the recipient of this information has signed a confidentiality agreement regarding this matter, this information is subject to the terms of that agreement. © 2024 Jones Lang LaSalle IP, Inc. All rights reserved.

Ashley Ramirez
ashley.ramirez@jll.com
(949) 885-2913
Lic. #02106273

Luke McDaniel
luke.mcdaniel@jll.com
(949) 885-2974
Lic. #01203625

Cameron Driscoll
cameron.driscoll@jll.com
(949) 885-2976
Lic. #01224141

Erin McCloskey
erin.mccloskey@jll.com
(949) 930-7891
Lic. #02244405