

ONE BOULDER PLAZA

1800 Broadway



Be in the *Center* of it All

Nestled in the vibrant heart of Boulder, Colorado, this sublease offers an exceptional opportunity to be in the center of it all. Steps away from Pearl Street Mall, you'll find yourself immersed in Boulder's renowned dining scene, eclectic shops, and lively cultural events. With the majestic Flatirons as your backdrop and easy access to scenic hiking trails, this location seamlessly blends urban convenience with Colorado's natural splendor. Experience the perfect balance of work and play at One Boulder Plaza!



Suite: 200



Parking: 1/1,000 SF



Size: 20,248 SF



FF&E: Negotiable



LXD: 3/31/2029



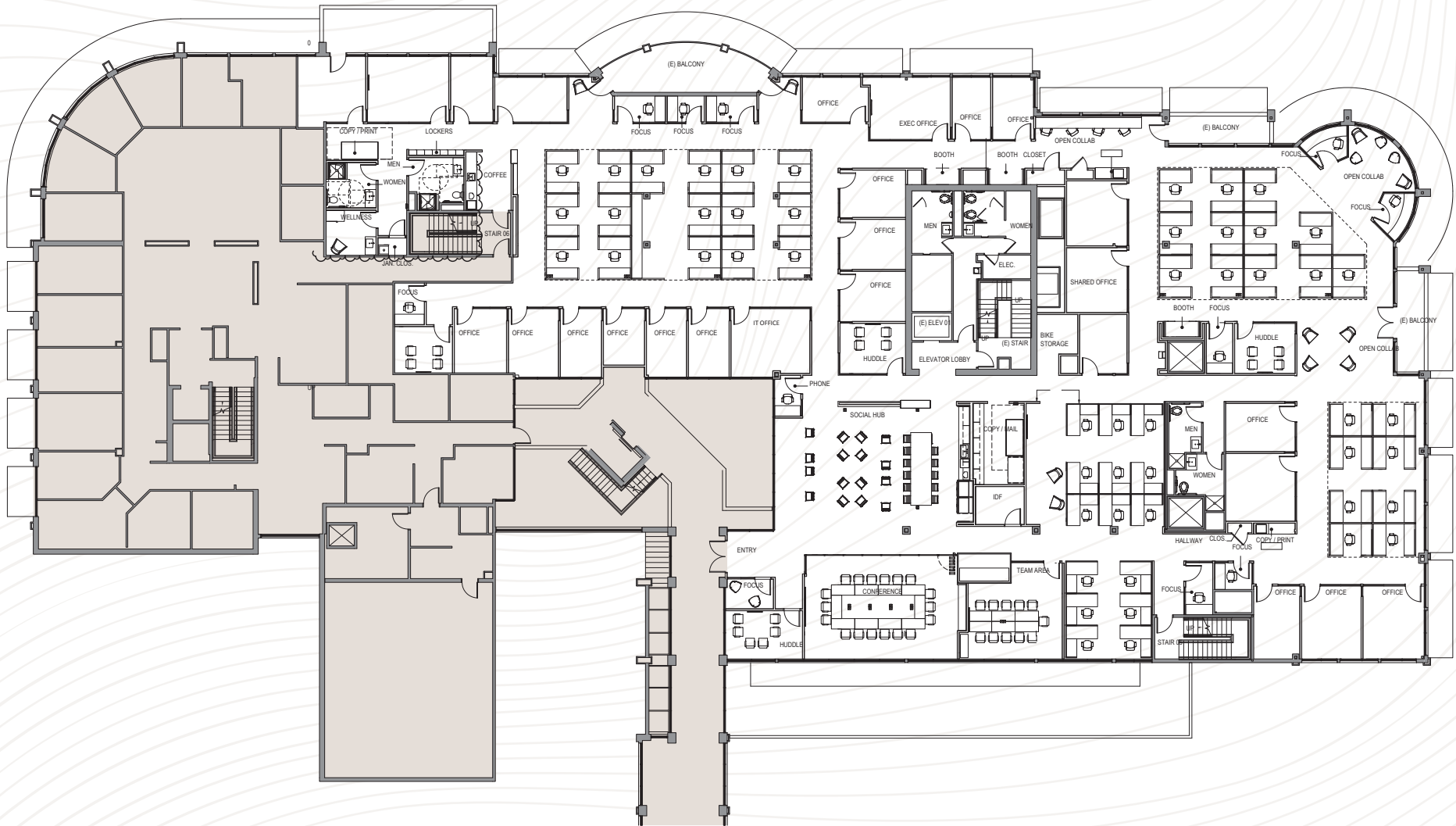
Rate: Negotiable



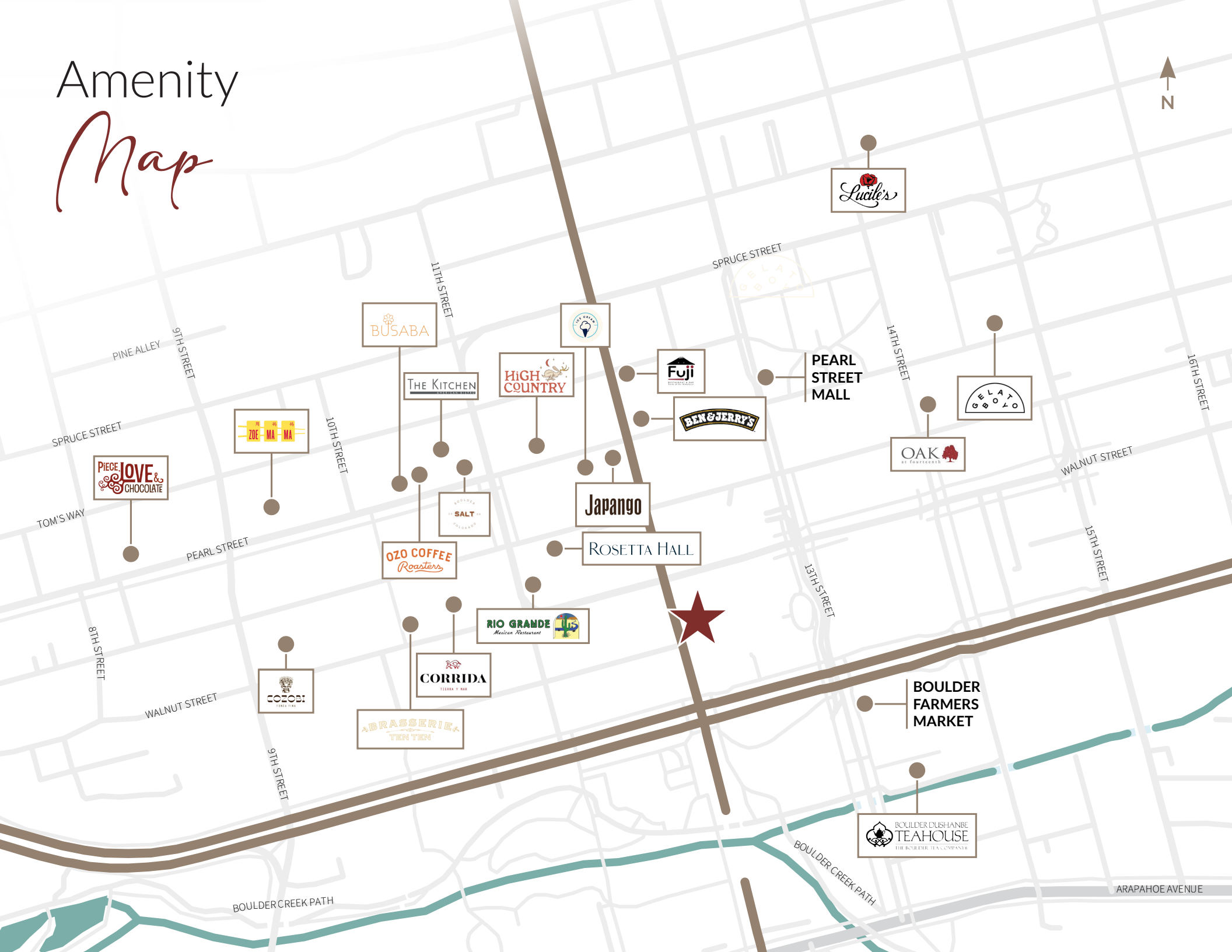
Suite Photos



Floor *Plan*



Amenity *Map*





Pearl Street Mall



Boulder Flatirons

The best of *Boulder*



University of Colorado

Boulder



Folsom Field



Janessa Biller

+1 303 260 6532

Janessa.Biller@jll.com



Although information has been obtained from sources deemed reliable, JLL does not make any guarantees, warranties or representations, express or implied, as to the completeness or accuracy as to the information contained herein. Any projections, opinions, assumptions or estimates used are for example only. There may be differences between projected and actual results, and those differences may be material. JLL does not accept any liability for any loss or damage suffered by any party resulting from reliance on this information. If the recipient of this information has signed a confidentiality agreement with JLL regarding this matter, this information is subject to the terms of that agreement. ©2025 Jones Lang LaSalle Brokerage, Inc. All rights reserved.