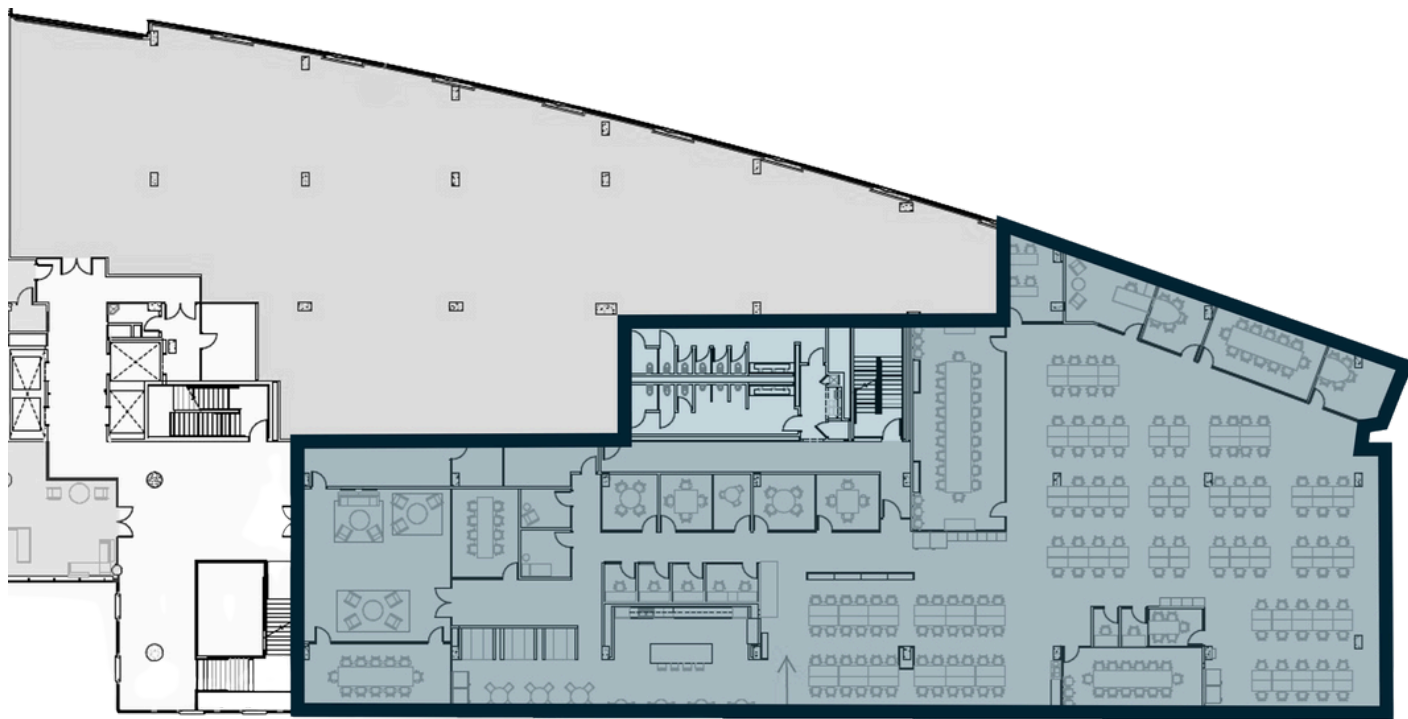
 **JLL** SEE A BRIGHTER WAY

For sublease

17,530 RSF Available

1701 Platte Street
Denver, CO 80202

Floorplan



Space Highlights

- **Move in ready!**
- High-end - fixtures included - 100% turnkey!
- Available immediately
- Built new/first generation in 2023
- Very modern/"techie" buildout
- Easy access off I-25

17,530 s.f.

Suite 210

Location

1701 Platte Street
Denver, CO 80202

Term

Through November 30, 2028

Rate

Negotiable

Parking

1.25/1,000 SF in building garage

Details

Platte Street continues to be a high demand location. Multiple restaurants and other amenities within a couple of blocks.

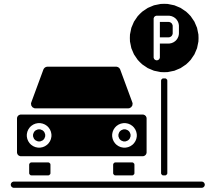
PERFECT Platte Street Location



Pet Friendly



LEED Certified



Visitor Parking



Bike Facilities



Ride Share Zone



Solar



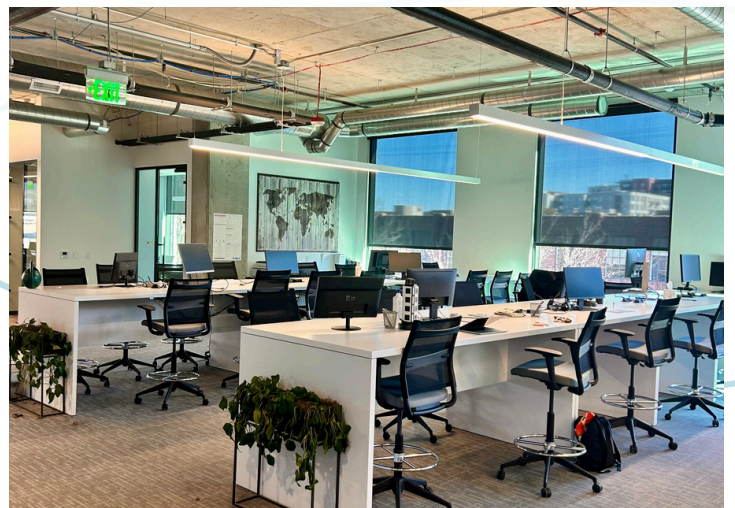
Fitness Center



Nearby Residential



**Convenient
Highway Access**



David Shirazi
David.Shirazi@jll.com
+1 (303) 390 5247

Ken Gooden
Ken.Gooden@jll.com
+1 (303) 390 5202