

For lease

Office / medical space



Floor	Availability	Possession	Use
Part 1 st floor	1,350 SF	July 2025	Office / medical
Part lower level	11,935 SF	Immediate	Office / storage

Property specifications

Rental rate	<ul style="list-style-type: none">1st floor: \$30.00 PSFLower level: upon request
Building highlights	<ul style="list-style-type: none">Ample parking available24/7 building accessOn-site managementAdditional storage space available
Location	<ul style="list-style-type: none">Located directly off the Seaford-Oyster Bay ExpresswayApprox. 2 miles from Syosset LIRR train stationSituated in the Crossways Business Park

20 Crossways Park Dr N Woodbury, NY

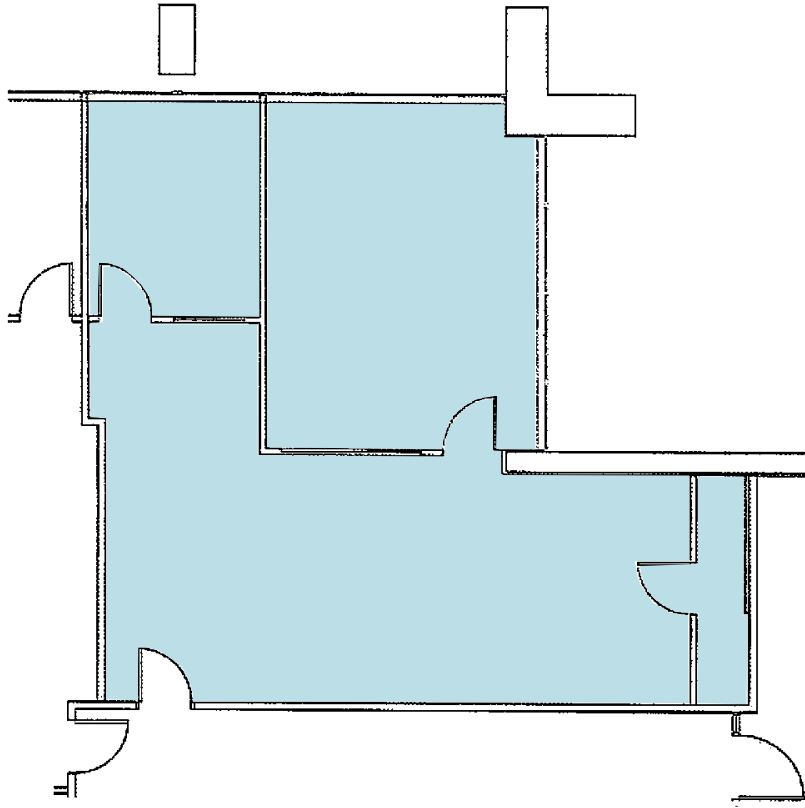
Kyle Crennan
Managing Director
+1 631 962 2896
kyle.crennan@jll.com

Joseph Lopresti
Executive Vice President
+1 631 962 7384
joseph.lopresti@jll.com

Brian Weigold
Senior Associate
+1 631 962 2895
brian.weigold@jll.com

Floor plan:

Part 1st floor: 1,350 SF



AMENITIES

1. Syosset Hospital
2. Panera Bread
3. Chipotle
4. Rare 650
5. Equinox
6. The Fox Hollow
7. Syosset-Woodbury Park
8. Best Western
9. Starbucks

