



NORTHPOINTE PROFESSIONAL CENTER

9425 North Nevada Street, Spokane, WA

OFFICE SPACE FOR LEASE

Jones Lang LaSalle Brokerage, Inc.
Real Estate License #: 01856260

ABOUT THE LANDLORD

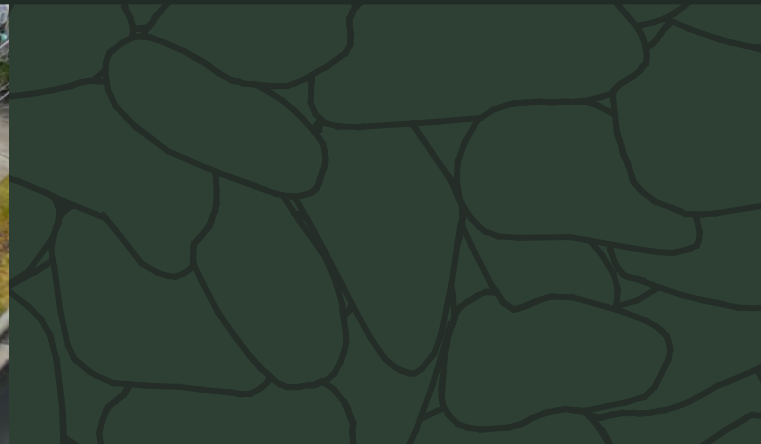
Established in the early 1970's, Vandervert Developments & Hotels has expanded exponentially in most recent years, now owning and managing dozens of development properties throughout the region. It is no surprise that Vandervert's legacy continues to grow thanks to the unwavering commitment to excellence and quality. We encourage you to discover for yourself why countless businesses have opted to lease their office, retail, and tech space from Vandervert Developments.

VANDERVERT
Developments



LOCATED IN THE HEART OF SPOKANE'S NORTH CORRIDOR

Northpointe Professional Center offers flexible office space in a variety of sizes to accommodate any tenant.



FEATURES

- Elevator
- Grand staircase
- Natural light
- Updated units
- Locational amenities
- Exterior signage potential

Leased space is offered on a fully serviced basis that includes:

- Utilities
- Janitorial service
- Common area maintenance
- Snow removal

Tenant improvements are available to help users customize spaces to their individual needs.

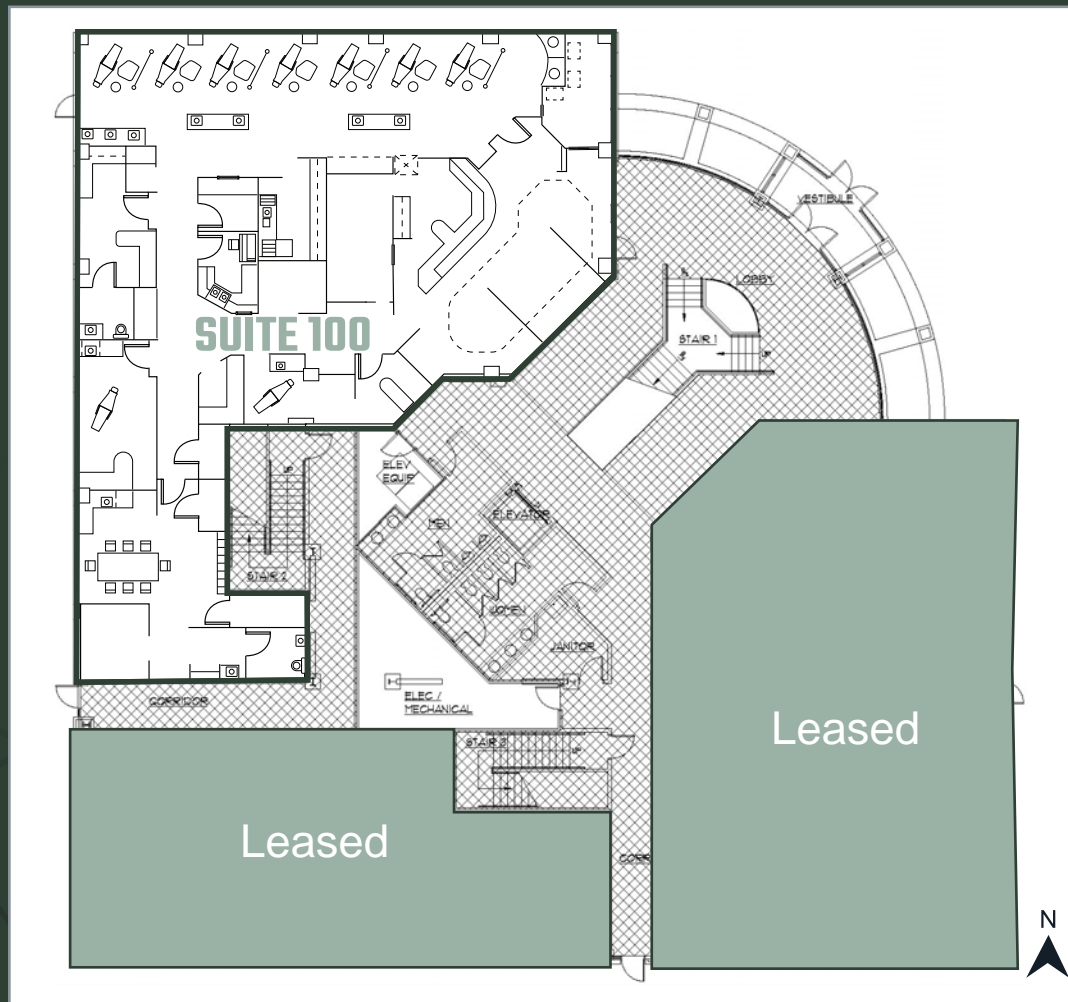
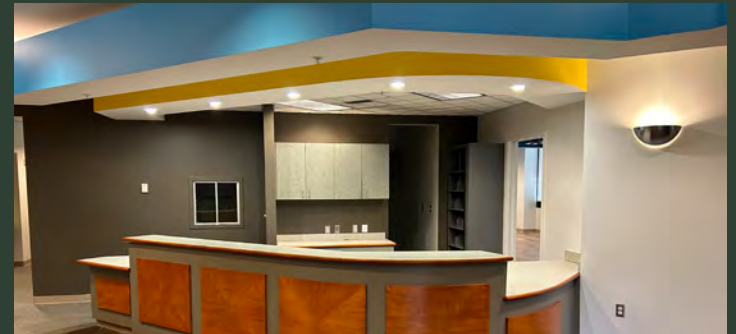


FLOOR 1

Suite 100

4,692 SF

Highlights:
Available now



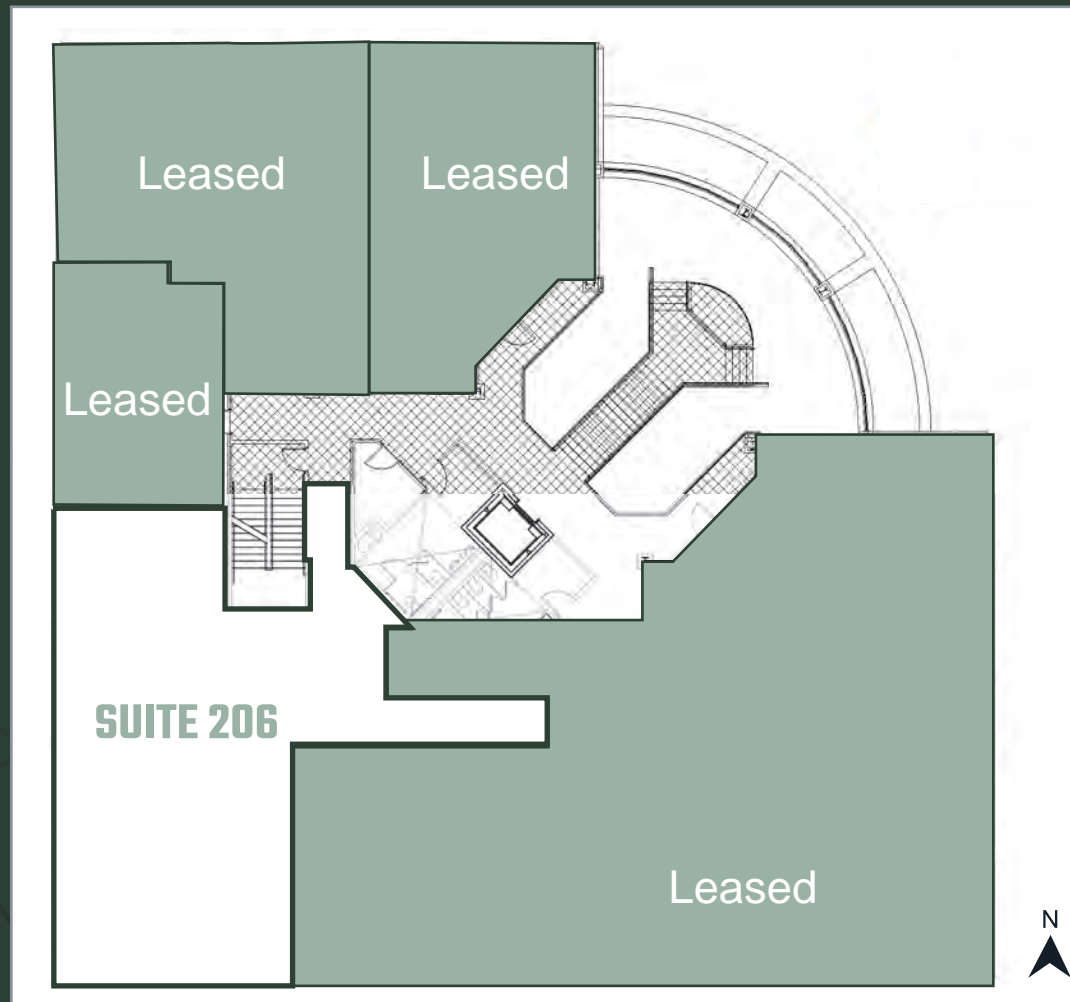
FLOOR 2

Suite 206

2,486 SF

Highlights:

Available now





MICHAEL SHARAPATA

Senior Managing Director
+1 509 822 0088
michael.sharapata@jll.com

JARED SMITH

Vice President
+1 509 505 7459
j.smith@jll.com

Although information has been obtained from sources deemed reliable, neither Owner nor JLL makes any guarantees, warranties or representations, express or implied, as to the completeness or accuracy as to the information contained herein. Any projections, opinions, assumptions or estimates used are for example only. There may be differences between projected and actual results, and those differences may be material. The Property may be withdrawn without notice. Neither Owner nor JLL accepts any liability for any loss or damage suffered by any party resulting from reliance on this information. If the recipient of this information has signed a confidentiality agreement regarding this matter, this information is subject to the terms of that agreement. ©2025. Jones Lang LaSalle IP, Inc. All rights reserved.