




For sublease

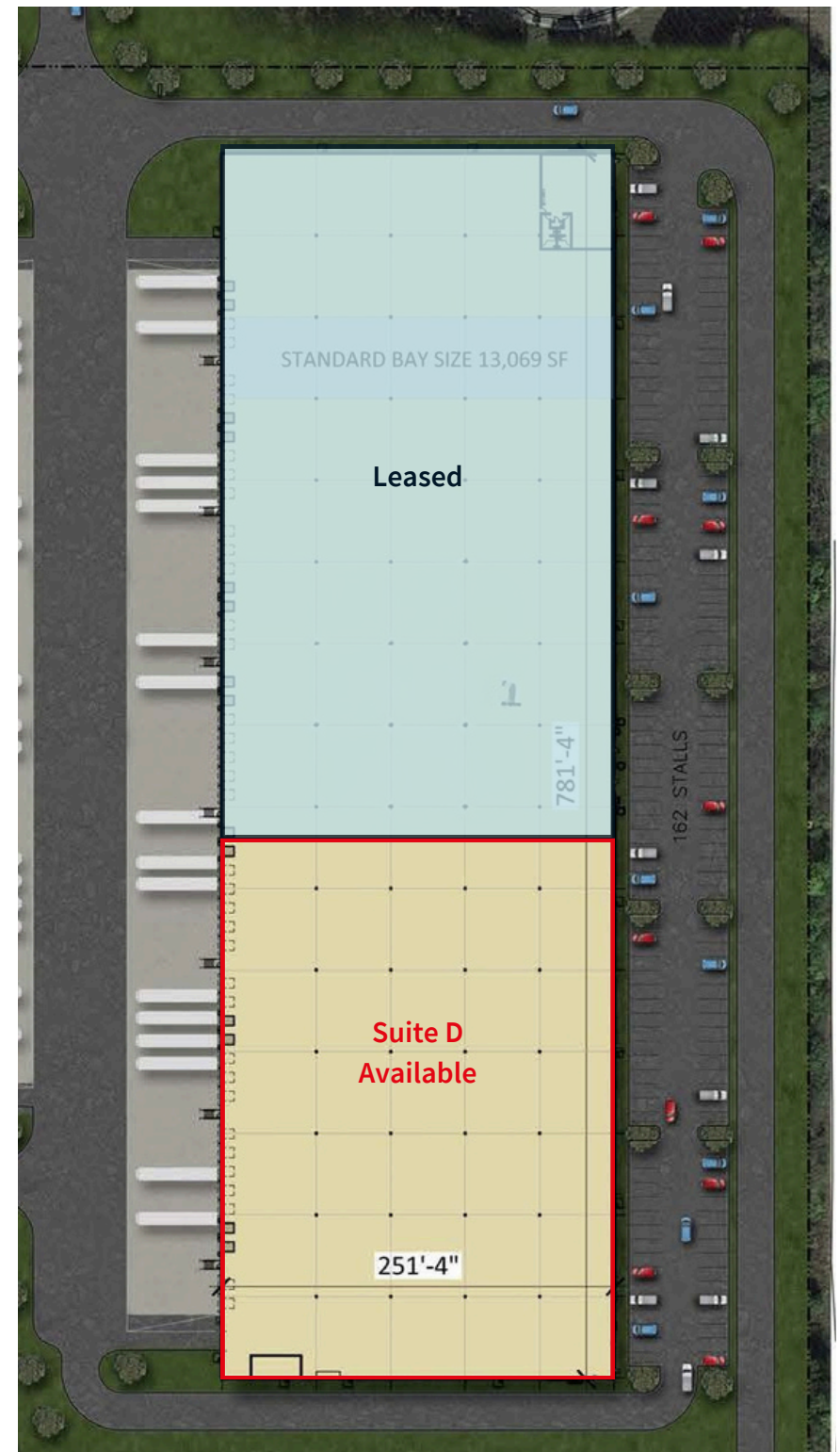
Global Court II
60,000 – 97,982 SF Available

15-Year 100% Tax Abatement

 **JLL** SEE A BRIGHTER WAY

Site plan

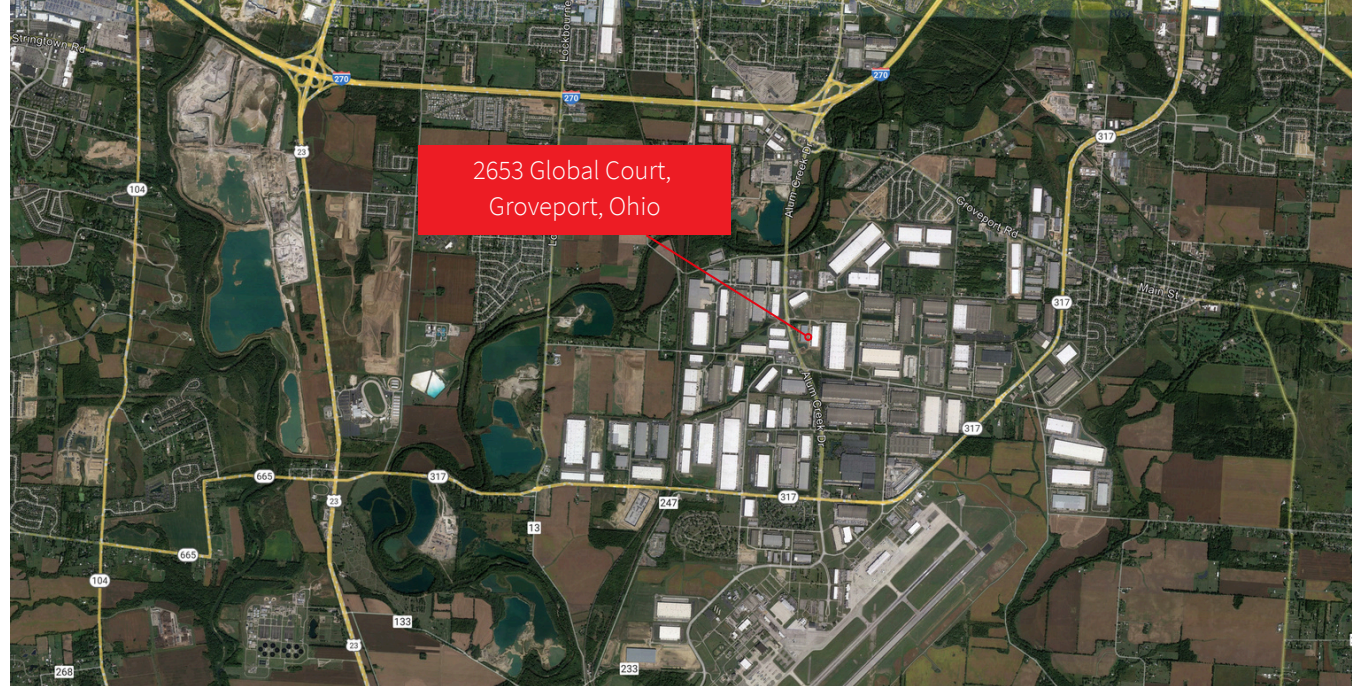
Address	2653 Global Court
Building size	196,400 s.f.
Available s.f.	60,000 - 97,982 s.f.
Sublease available through	May 31, 2027 (direct deal available)
Office s.f.	~2,500 s.f. (excluding receiving office)
Building dimensions	781'-4" W x 251'-4" D
Column spacing	52'x47'6"
Clear height	32'
Dock doors	14 Dock Doors (9 with Levelers)
Grade level doors	1 (12'w x 14'h)
Truck court depth	180'
Warehouse lighting	LED
Fire suppression	ESFR
Power	3-Phase 4 Wire
Auto parking	76



Location

This modern Class A industrial distribution facility is strategically situated in the Rickenbacker Global Logistics Park and offers a remarkable 15-year, 100% tax abatement. It is conveniently positioned just minutes away from I-270.

Class A Modern Industrial Distribution Facility



Property photos



JLL

Matthew Collins

matthew.collins@jll.com

+1 (740) 815 7986

Jones Lang LaSalle Americas, Inc. License #: CO508577000