



For sublease

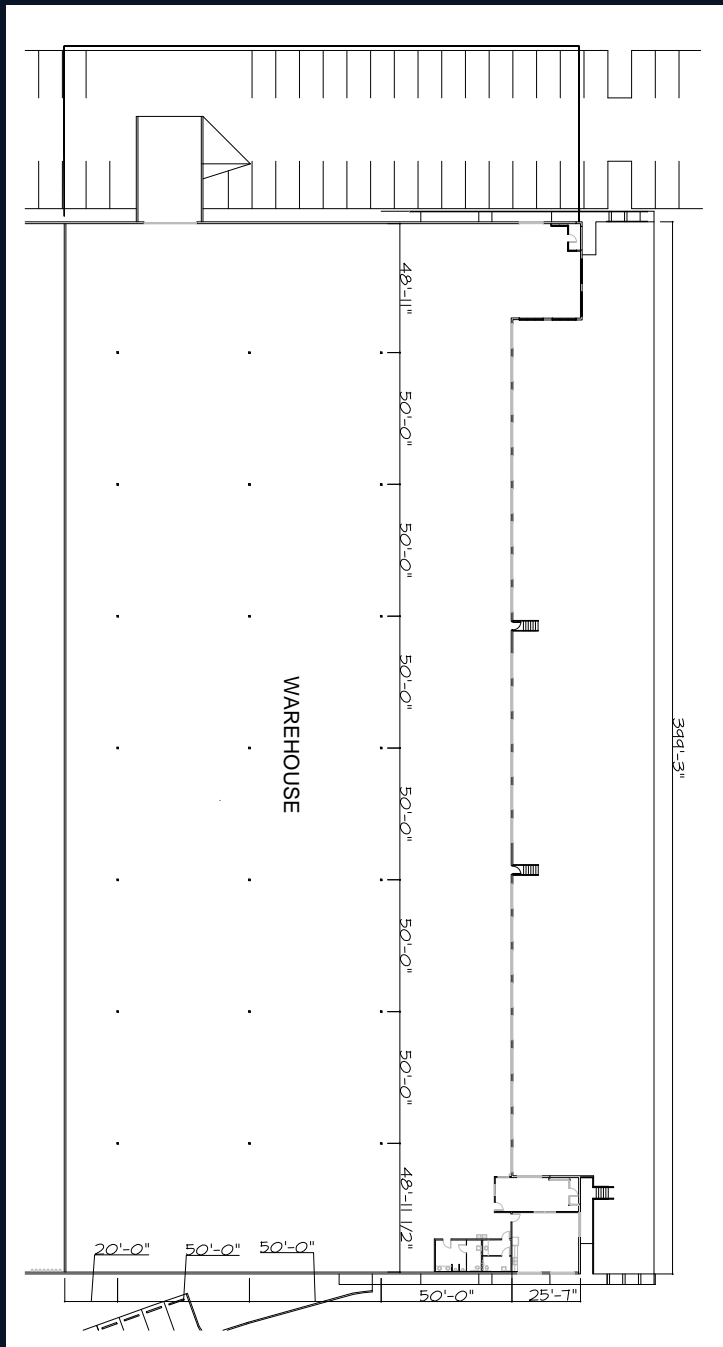
4740 Oak Fair Blvd.
Tampa, FL 36610

69,760 SF

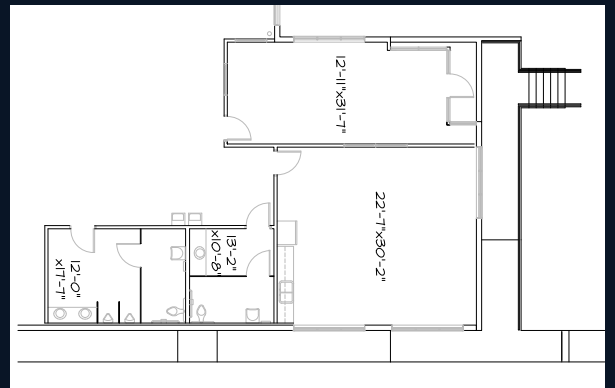
Availability Highlights

- Building SF: 173,514
- Available SF: 69,790
- Office SF: 1,456 SF
- Available: 01/01/2026
- Lease expiration: 01/31/2027
- Loading: front-load, 25 dock-high doors, 1 oversized drive-in door
- Clear height: 30'
- Column spacing: 50' x 50'
- Sprinklers: ESFR
- Truck court: 180'
- Power: 2,000a/277 - 477v 3p Heavy
- Parking: 60 spaces
- Ideal location at Interstate 4 (I-4), U.S. Highway 301 (US-301), and Interstate 75 (I-75)

Floor Plan



68,304 SF warehouse



1,456 SF office

Location



Contact:

Olivia Brock

Associate

olivia.brock@jll.com

+1 813 387 1320



Although information has been obtained from sources deemed reliable, JLL does not make any guarantees, warranties or representations, express or implied, as to the completeness or accuracy as to the information contained herein. Any projections, opinions, assumptions or estimates used are for example only. There may be differences between projected and actual results, and those differences may be material. JLL does not accept any liability for any loss or damage suffered by any party resulting from reliance on this information. If the recipient of this information has signed a confidentiality agreement with JLL regarding this matter, this information is subject to the terms of that agreement. ©2025 Jones Lang LaSalle Brokerage, Inc. All rights reserved.