

# For sale

5193 & 5195 W Woodmill Drive  
Woodmill Corporate Center  
Wilmington, DE 19808

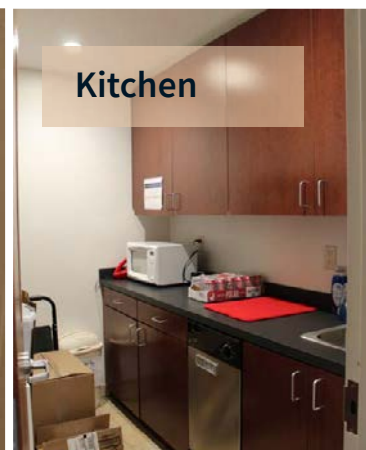
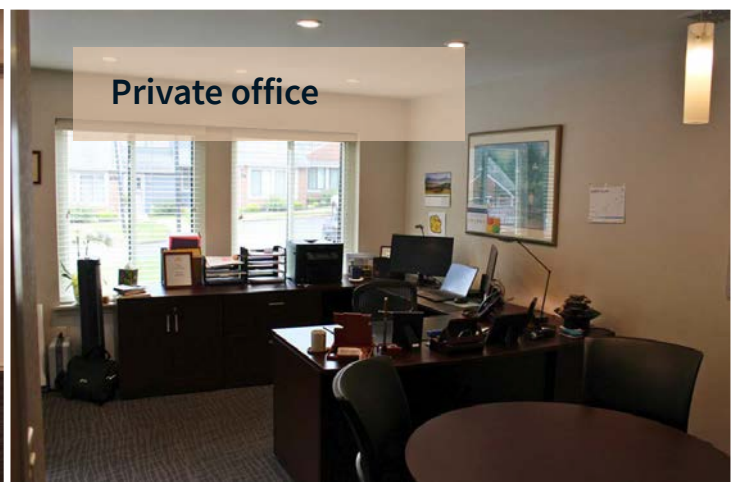
Two Office Condo units #27 and #28  
1,624 SF each for a total of 3,248 SF on two floors





## Property photos

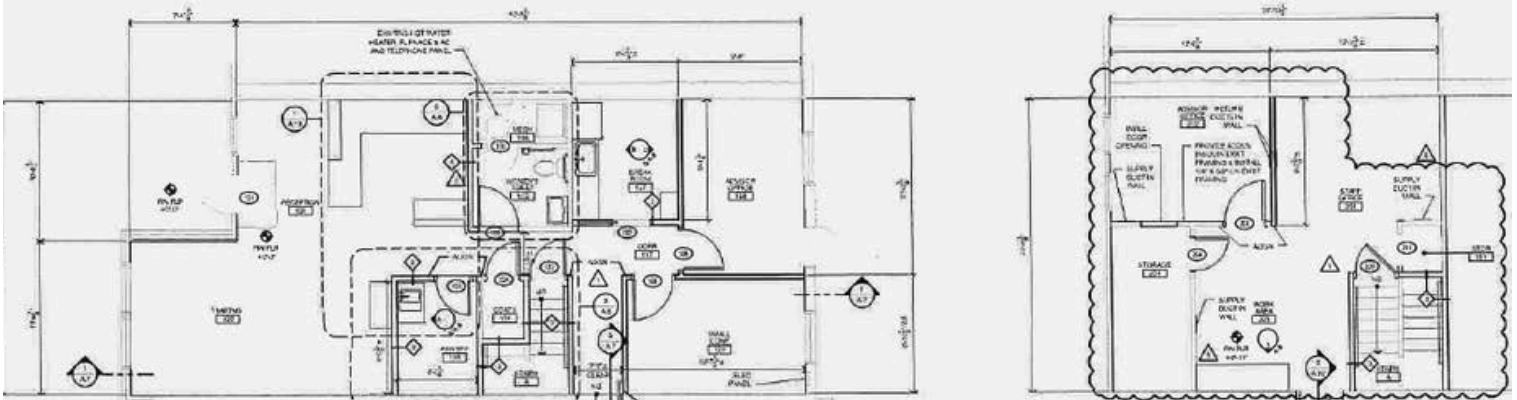
- Ready to occupy office condo with 3,248 SF
- Consisting of reception area, kitchenette, large conference room, 6 offices on 1st floor, 7 additional office, work/copy area on 2<sup>nd</sup> floor
- Great for law or general business professionals



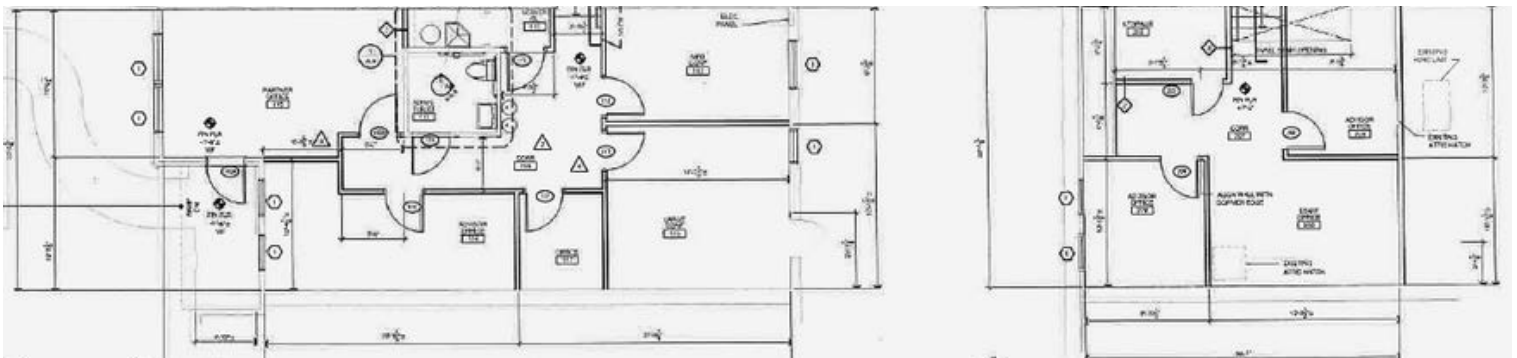


# Floorplans

Suite 27



Suite 28

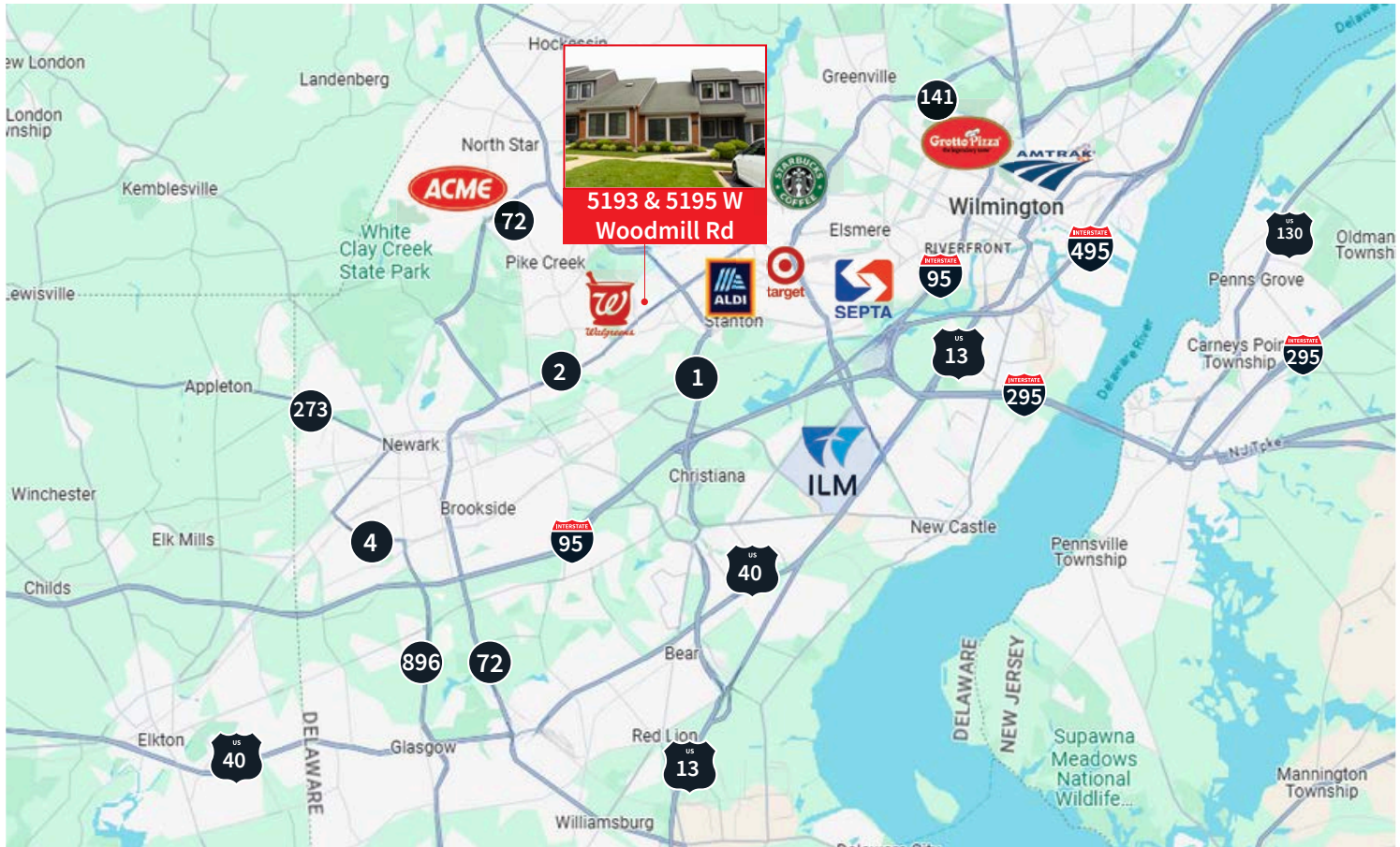


## Highlights

- Available: 3,248 SF
- For Sale: \$750,000
- Newly renovated with sound proofing and upgraded interior doors for privacy
- Furniture could be available
- Great location off Kirkwood Highway near Rt. 7 (Limestone Road) intersection
- Bus access
- Ample Parking
- Owner operated condo association



# Map



## Demographics

2024	1 mile	3 miles	5 miles
<b>Estimated population</b>	10,421	69,176	179,944
<b>Estimated households</b>	4,373	28,955	71,903
<b>Est. Average HH income</b>	\$82,660	\$89,175	\$87,615
<b>Daytime Population</b>	10,079	79,485	192,847

Cindy Fleming  
Associate Vice President  
cindy.fleming@jll.com  
T +1 302 356 2866  
M +1 610 633 5148

**jll.com**

Jones Lang LaSalle Brokerage, Inc.  
1011 Centre Road, Suite 117  
Wilmington, DE 19805  
O +1 302 356 2858