



For sublease

Availability: 5,348 RSF

First Westroads Bank Building
15750 W Dodge Road
Omaha, Nebraska 68118

Property overview

Available space: 3rd floor | 5,348 RSF

Lease rate: \$20.00 PSF NNN

Est. OPEX: \$13.42

- Sublease until July 31st, 2026
- Recent updated carpet and paint
- Private offices and conference rooms that provide natural lighting
- Advanced audio/technology settings
- Parking: Underground
- Signage: Monument signage available

Contact broker for
additional information

jll.com/des-moines

Michael Minard, CCIM
Senior Vice President
michael.minard@jll.com
+1 515 414 1767

Thomas Edwards
Associate
thomas.edwards@jll.com
+1 515 802 4684

Jason Lozano, SIOR
Senior Vice President
jason.lozano@jll.com
+1 515 577 4225

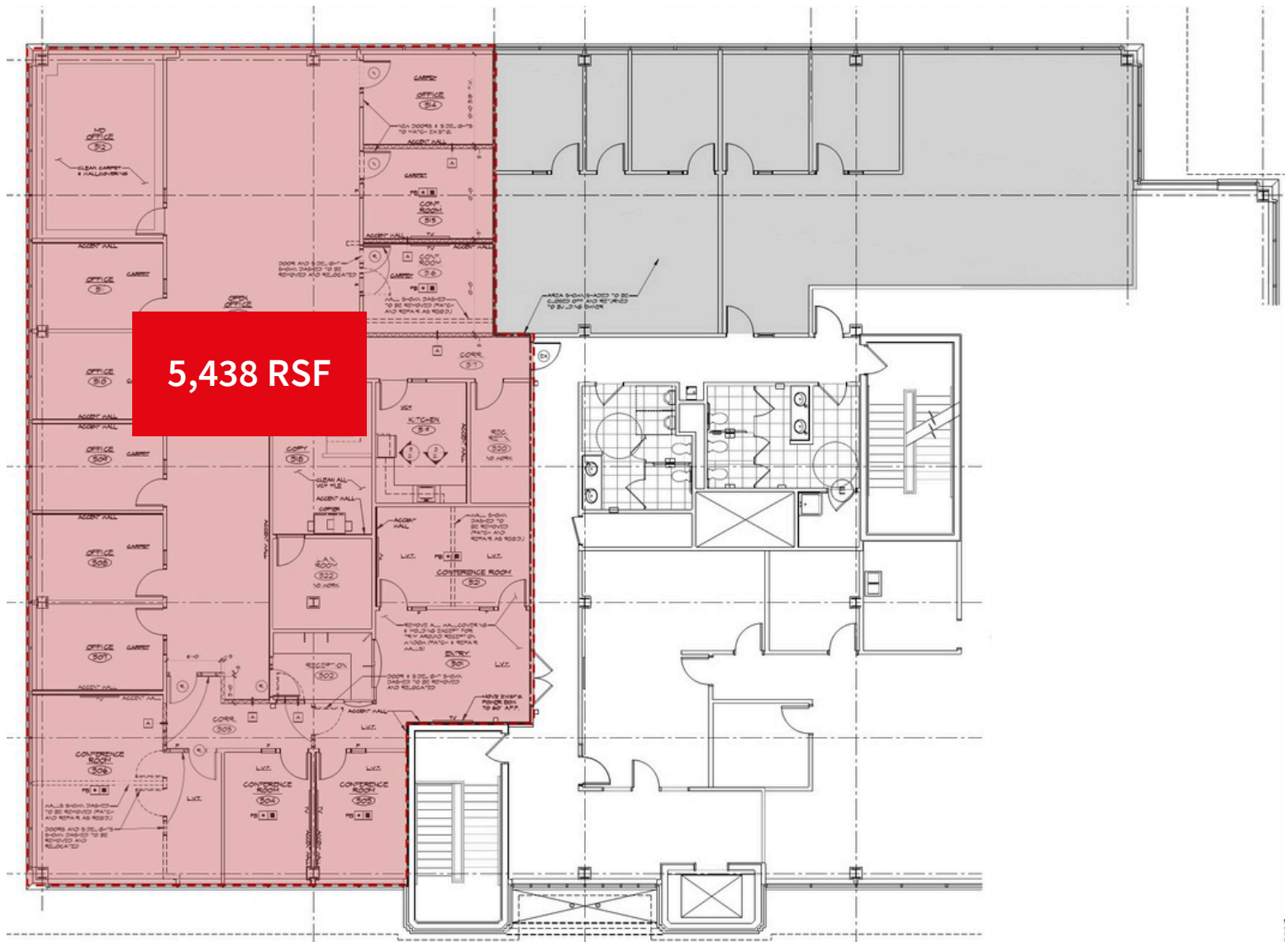
Floor plan

**For marketing purposes only.*

Availability: 3rd floor | 5,438 RSF (sublease)

Lease rate: \$20.00 PSF NNN

Est. OPEX: \$13.42

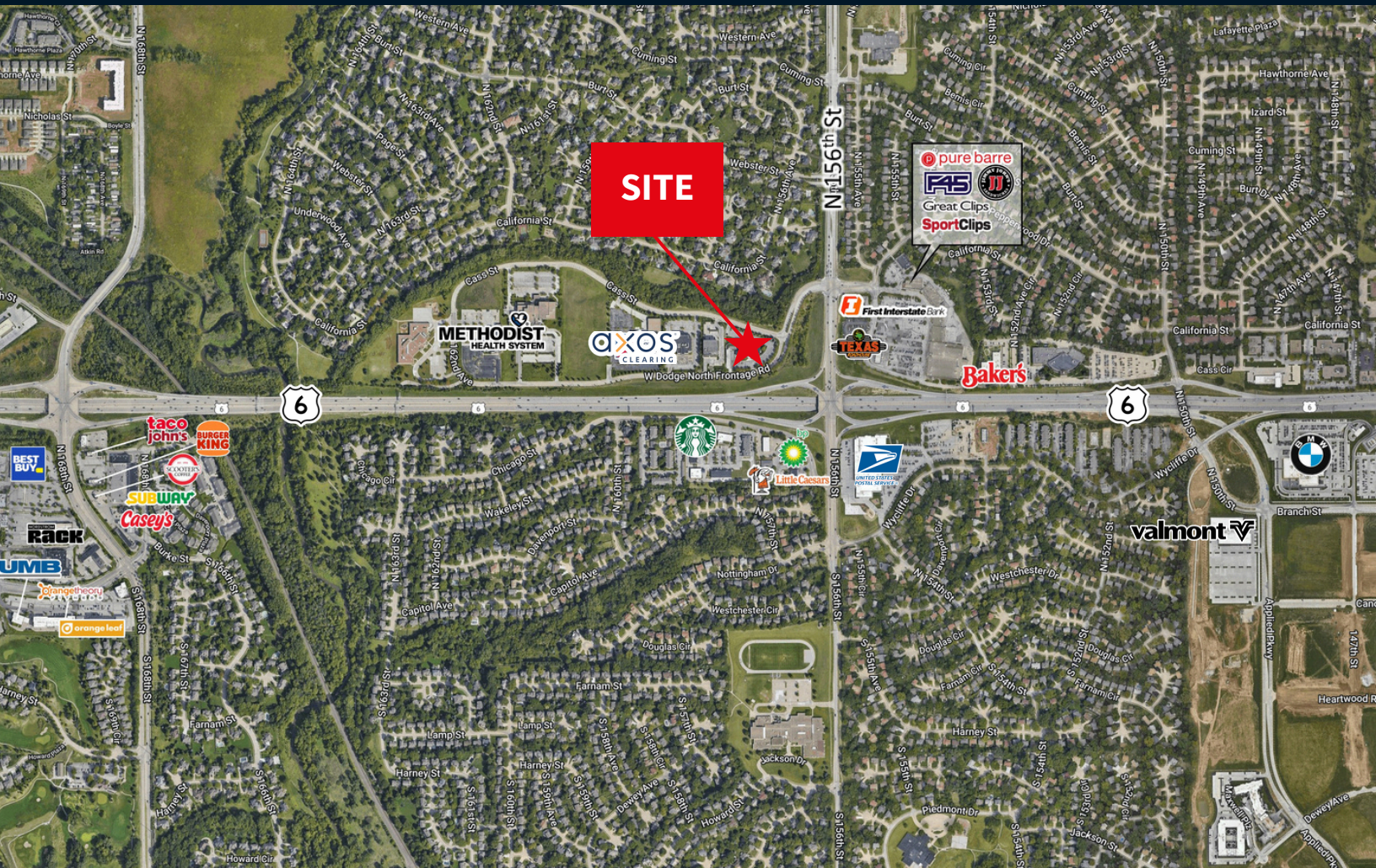


Property photos



For sublease

15750 W Dodge Road, Omaha, Nebraska 68118



Contact broker for
additional information

jll.com/des-moines

Michael Minard, CCIM
Senior Vice President
michael.minard@jll.com
+1 515 414 1767

Thomas Edwards
Associate
thomas.edwards@jll.com
+1 515 802 4684

Jason Lozano, SIOR
Senior Vice President
jason.lozano@jll.com
+1 515 577 4225

Jones Lang LaSalle Americas, Inc.