

# 500 W BROAD STREET

FULL FLOOR SUBLEASE OPPORTUNITY



# WELCOME TO GRAVITY

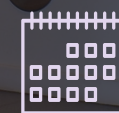
Discover Gravity, where distinctive spaces reflect your company's individuality. Located in the vibrant Franklinton district of Columbus, Ohio, Gravity's location offers a dynamic hub where innovative tech startups and established corporations exist alongside a flourishing arts scene, diverse culinary landscape, and more.



**11,416**  
**SQUARE FEET**



**2ND FLOOR**  
**SUITE 200**



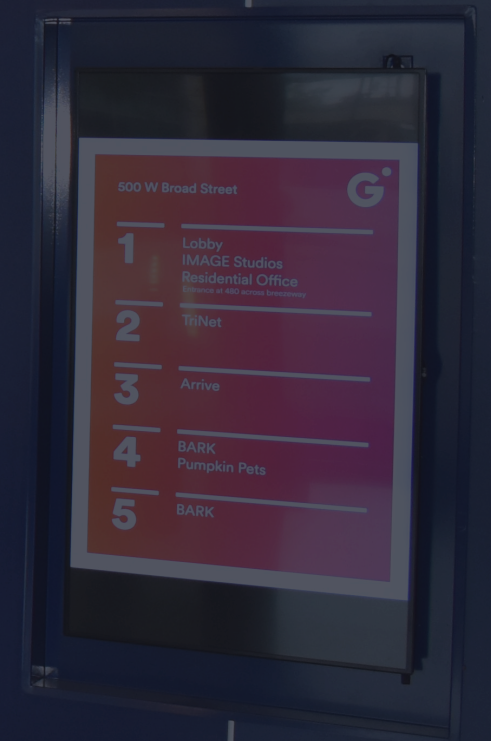
**LEASE EXPIRES**  
**11/30/2028**



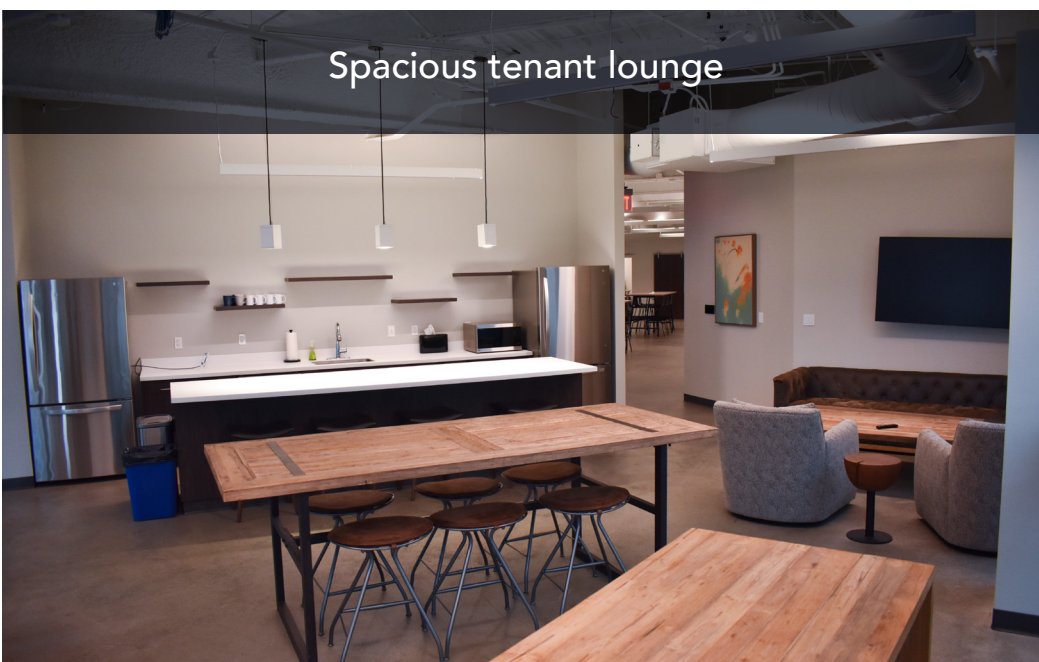
**\$23.00/PSF**  
**GROSS**



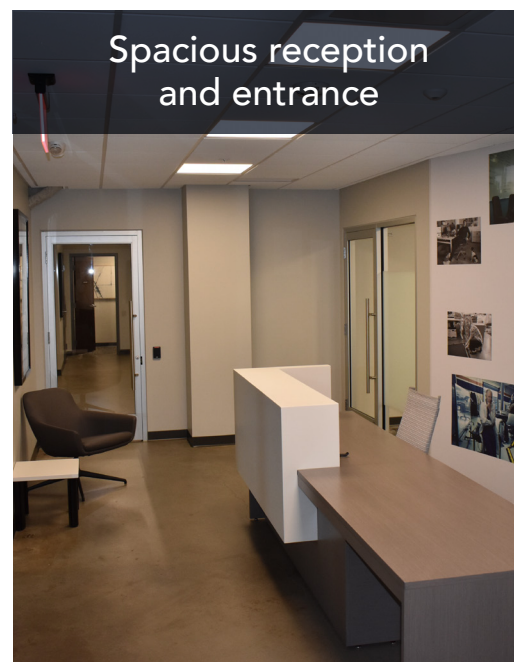
**UP TO 95**  
**PARKING SPACES**



Spacious tenant lounge



Spacious reception and entrance



Open collaboration areas



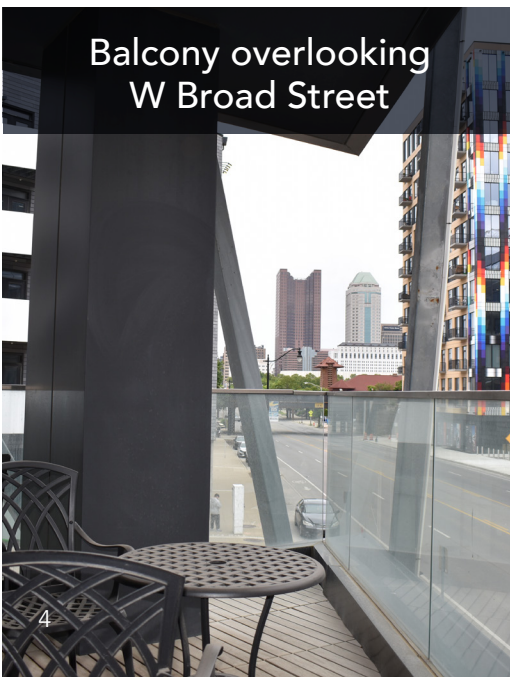
Huddle rooms



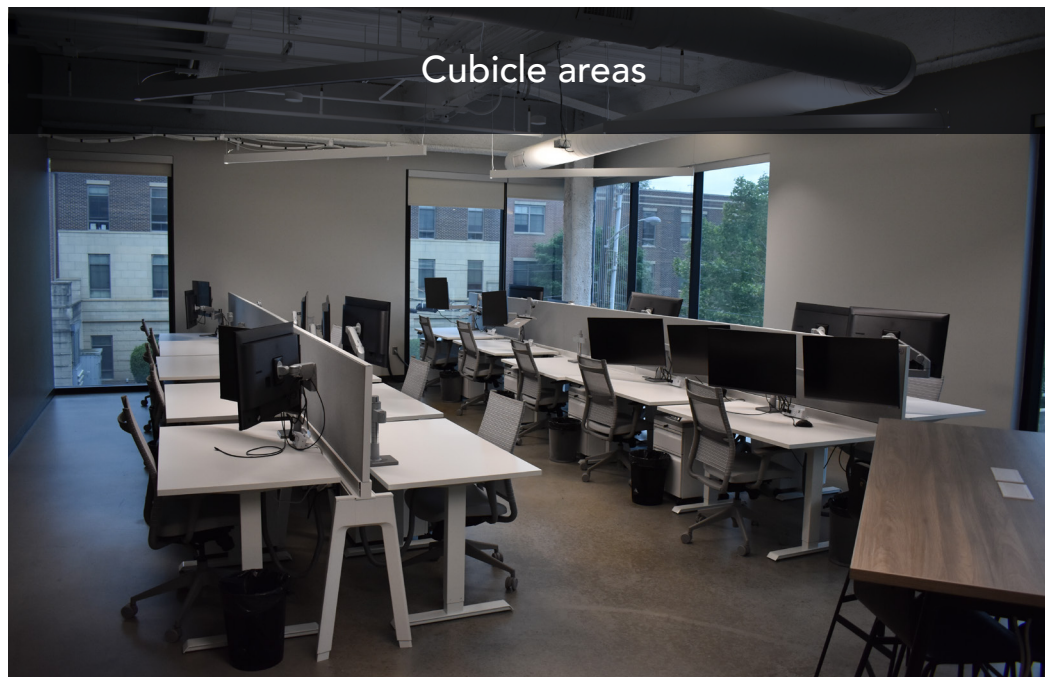
Boardroom



Balcony overlooking W Broad Street



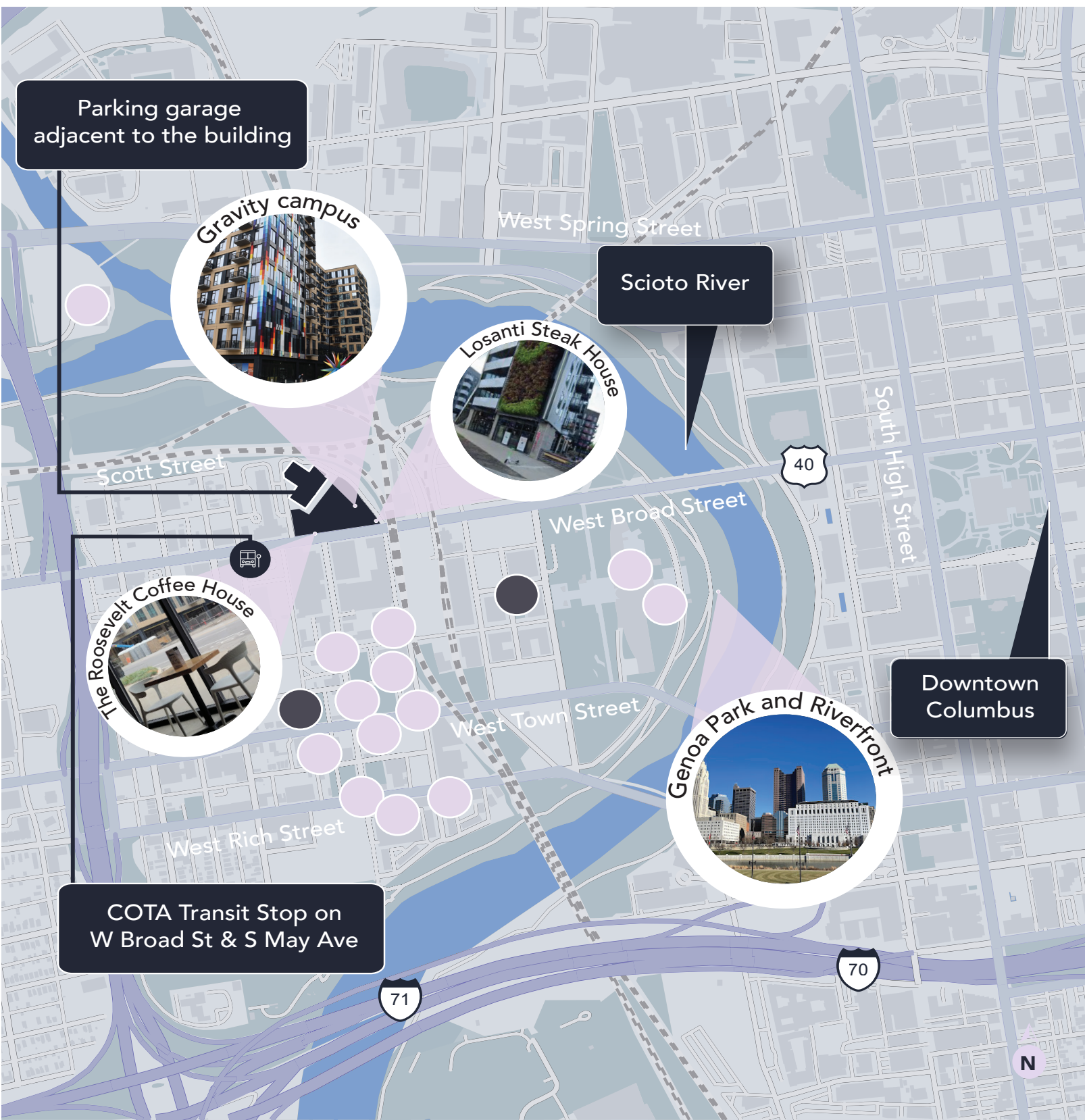
Cubicle areas



# TRANSFORM HOW YOU WORK

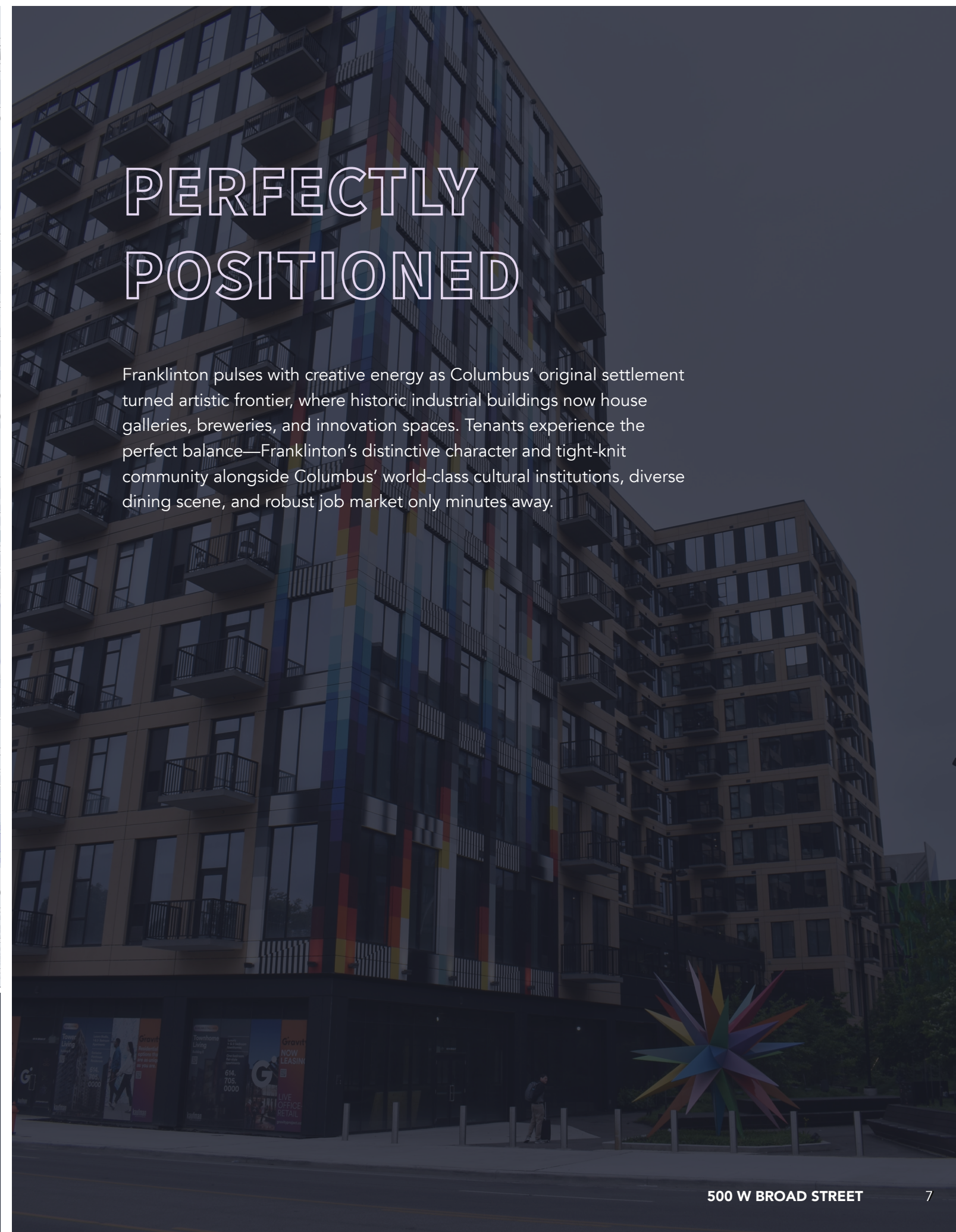
Be inspired in revolutionary office environments where innovation doesn't just happen—it thrives. These cutting-edge spaces dynamically blend collaboration hubs with serene retreats for deep thinking in refreshing natural light and surrounded by innovation.

trinet<sup>7</sup>  
clarus R+D



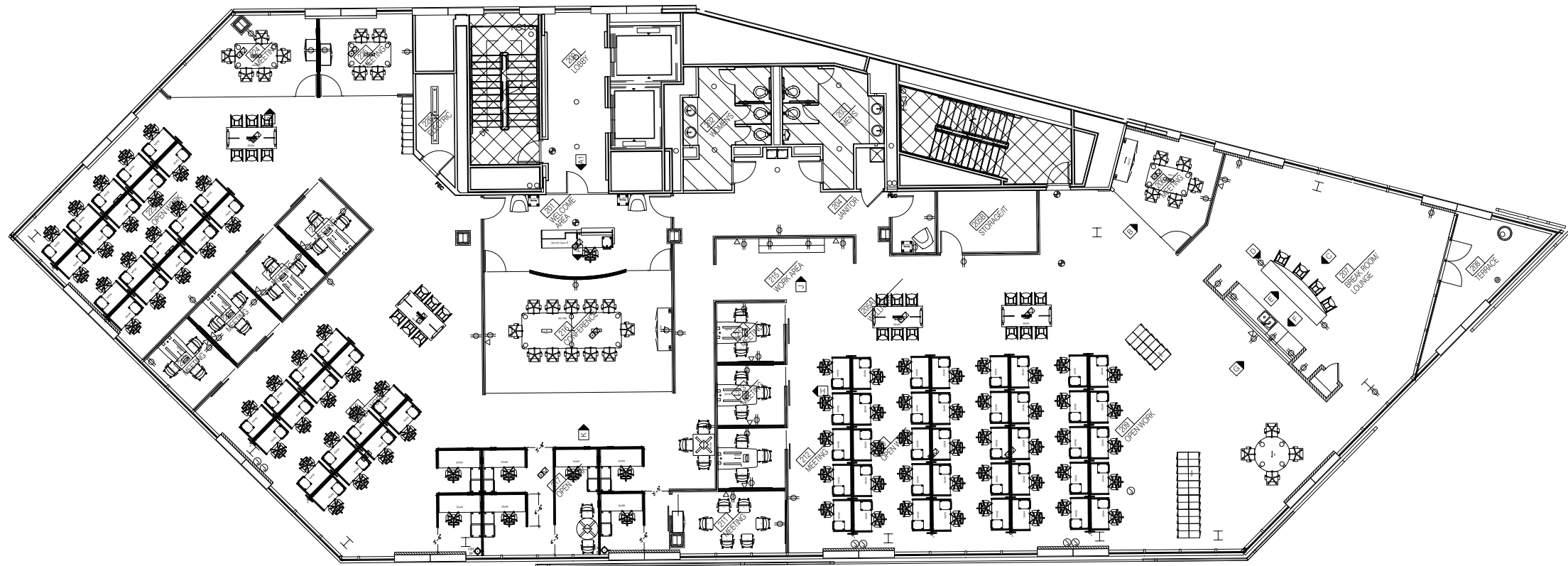
## LEGEND

-  HOTELS
-  DINING



# FLOOR PLAN

11,416 SQUARE FEET



## FURNITURE COUNT

QUANTITY	ITEM	QUANTITY	ITEM
76	5x3 Workstations (sit/stand desk)	1	6 Person executive meeting space
4	6 Person high top tables	7	3 Person meeting spaces (phone rooms)
7	Cubes with sit/stand desks, task chairs	1	Mothers room with mini fridge and lounge chair with table
85	Lockers with keys	1	Reception desk and task chair
1	12 Person conference table, chairs, and 2 credenzas (board room)	1	Soft seating area with couch and 2 side chairs
1	4 Person meeting space	1	3 Chair small meeting table
1	6 Person meeting space	4	Barstools
1	5 Person meeting space	3	Breakroom tables and serving table outdoor furniture



**FOR FURTHER INFORMATION, PLEASE CONTACT:**

**Caleb Struewing**

D: +1 614 460 4401

M: +1 614 946 3804

[caleb.struewing@jll.com](mailto:caleb.struewing@jll.com)

**Sean Stricker**

D: +1 614 460 4404

M: +1 440 554 1426

[sean.stricker@jll.com](mailto:sean.stricker@jll.com)



Although information has been obtained from sources deemed reliable, JLL does not make any guarantees, warranties or representations, express or implied, as to the completeness or accuracy as to the information contained herein. Any projections, opinions, assumptions or estimates used are for example only. There may be differences between projected and actual results, and those differences may be material. JLL does not accept any liability for any loss or damage suffered by any party resulting from reliance on this information. If the recipient of this information has signed a confidentiality agreement with JLL regarding this matter, this information is subject to the terms of that agreement. ©2025 Jones Lang LaSalle Brokerage, Inc. All rights reserved.