

Top Floor Opportunity

▶ Virtual Tour

1545 Carling Avenue

8,160 SF
Sublease
Ottawa



Carling Executive Park

1545 Carling Avenue, Ottawa

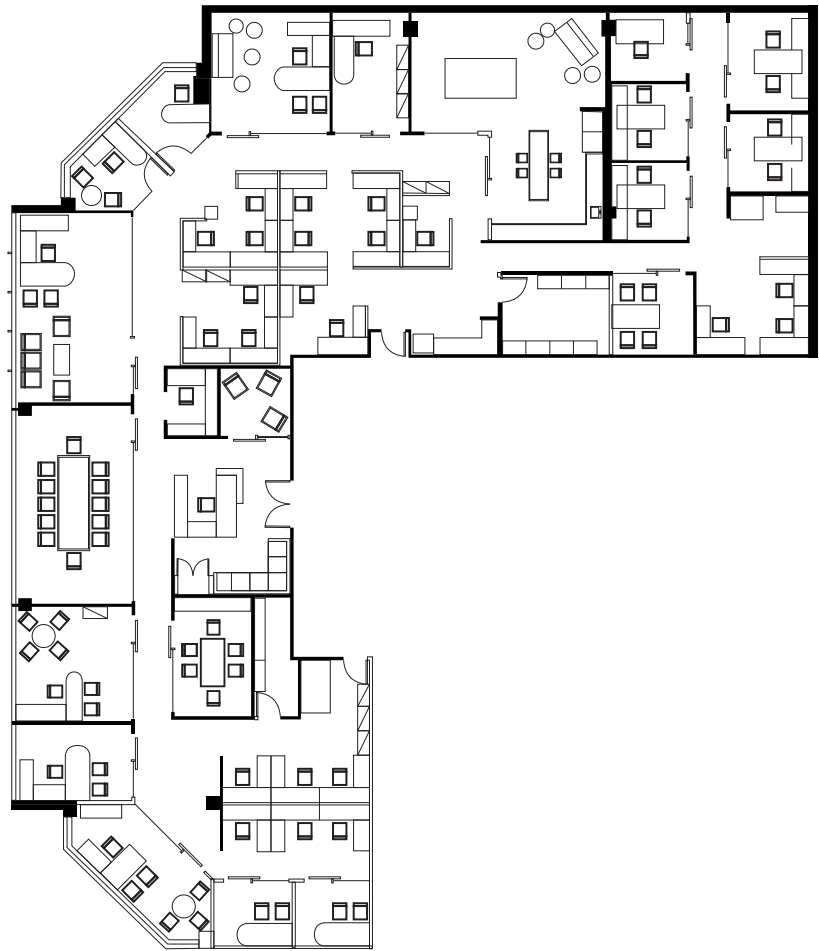
Premises	Suite 702: 8,160 SF
Class	A
Asking rent	Contact listing broker
Additional rent	\$22.19 per SF (2025)
Sublease term	September 30, 2027. After can be extended direct with landlord beyond current term
Furniture	Negotiable
Unit features	Double door entry off the elevators, with client-facing reception and large boardroom Top floor with superb north-west views Turnkey space with modern finishes
Complex features	Easily accessible building, directly off HWY 417 On-site amenities; conference center, gym and full service restaurant
Parking	2 stalls per 1,000 SF



Floor plan

1545 Carling Avenue

[▶ Virtual Tour](#)



Thank you

**We can support you with expert advice
that reflects your business needs
and priorities**

Steven Powell *

Vice President

Steven.Powell@jll.com

+1 613 293 4599

Stephanie Lui *

Vice President

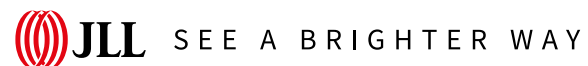
Stephanie.Lui@jll.com

+1 613 656 0153

*Sales Representative

About JLL

JLL (NYSE: JLL) is a leading professional services firm that specializes in real estate and investment management. JLL shapes the future of real estate for a better world by using the most advanced technology to create rewarding opportunities, amazing spaces and sustainable real estate solutions for our clients, our people and our communities. JLL is a Fortune 500 company with annual revenue of \$16.6 billion in 2020, operations in over 80 countries and a global workforce of more than 91,000 as of March 31, 2021. JLL is the brand name, and a registered trademark, of Jones Lang LaSalle Incorporated.



[jll.com](https://www.jll.com)