



±4,916 SF - Suite 130

2010 Jimmy Durante Boulevard

Del Mar, CA 92014

FOR SUBLEASE



Kevin Leissring

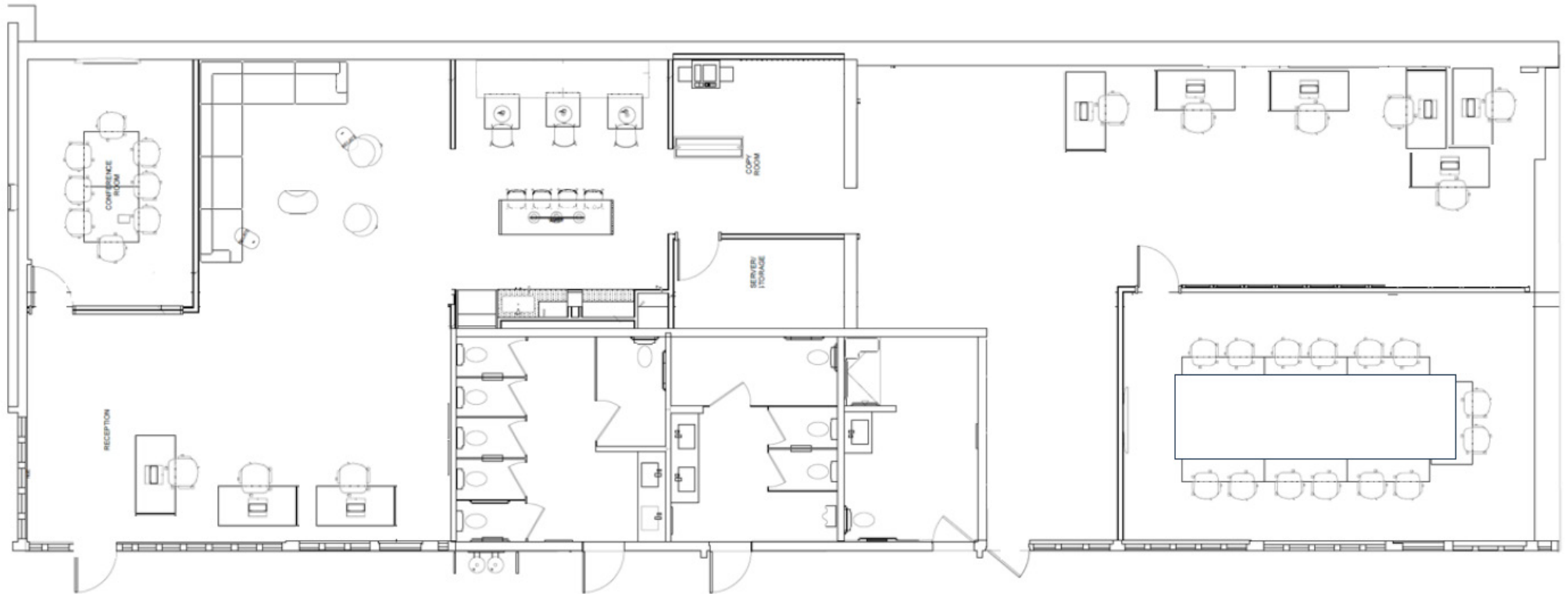
+1 858 410 1242

kevin.leissring@jll.com

Cal License #02088596

Jones Lang LaSalle Brokerage, Inc. RE lic. #01856260

Floor Plan



4,916 SF
Suite 130



2020
Renovations



Landscaped
Exterior & Patios

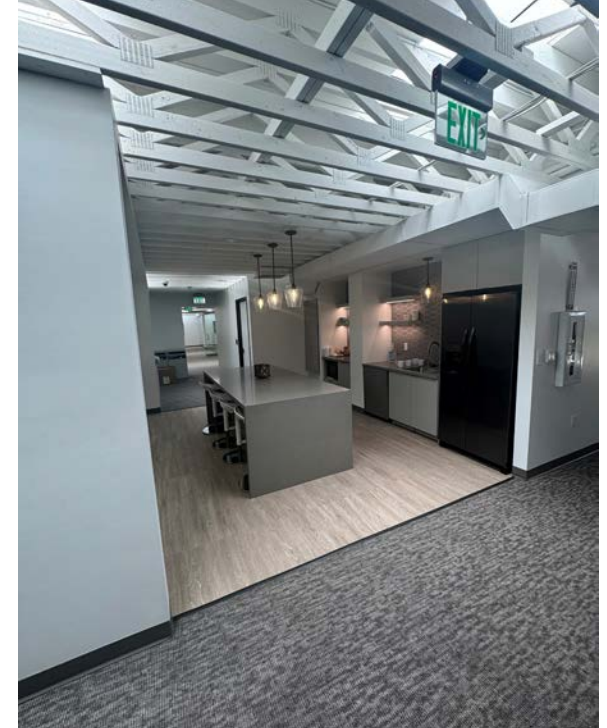


10/31/28
Lease Expiration



3.5:1,000
Parking

Photos





Contact:

Kevin Leissring

+1 858 410 1242

kevin.leissring@jll.com

Cal License #02088596

