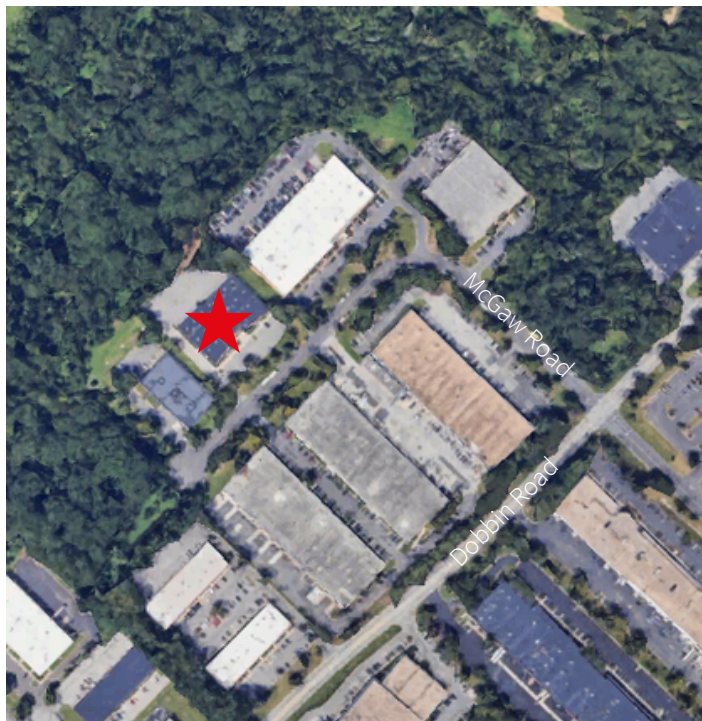
 **JLL** SEE A BRIGHTER WAY

Available

8924 McGaw Ct
Columbia, MD 21045

Property Overview



Strategically located in Columbia, Maryland, 8924 McGaw Court offers a prime business address in the heart of the Baltimore-Washington corridor.

Property Highlights

- Fully air-conditioned building.
- This Flex Building can be leased as office or warehouse space.
- Currently has 4,800 sf tenant through 6/1/29

Size available for sale	26,593 sf
Size available for lease	21,763 sf
Acreage	2.38 acres
Built	1984
Rental Rate	\$15.50 NNN
Operating Expenses	\$6.38
Utilities	Gas and electric services are separately metered



Site Plan





Rick Williamson
(410) 404-5522
rick.williamson@jll.com

Rob Freedman
(410) 952-9444
rob.freedman@jll.com

Dominic Digiovannantonio
(443) 452-1505
dom.digi@jll.com

jll.com

Jones Lang LaSalle Americas, Inc.