

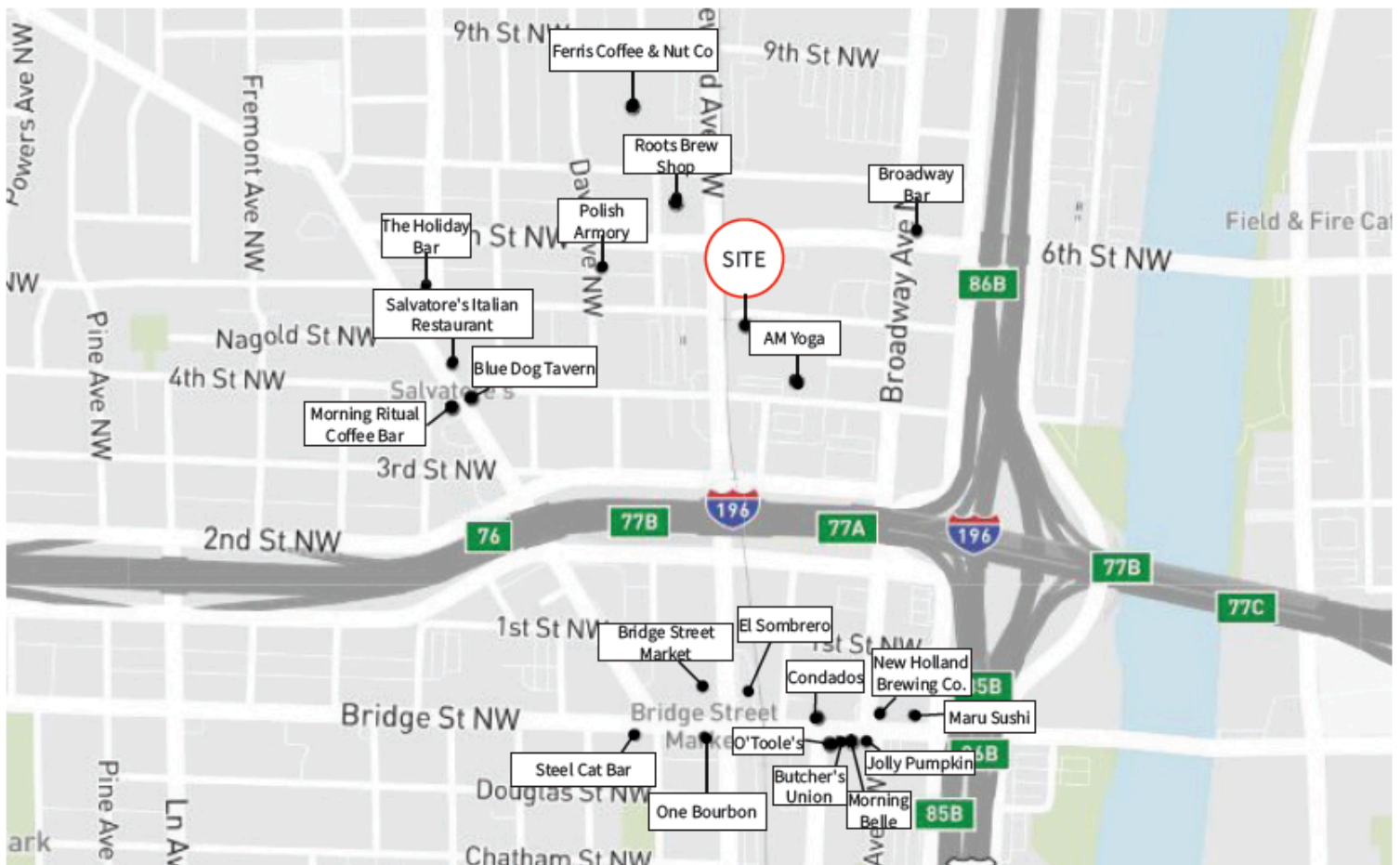
# For lease

665 Seward Ave NW | Grand Rapids, MI



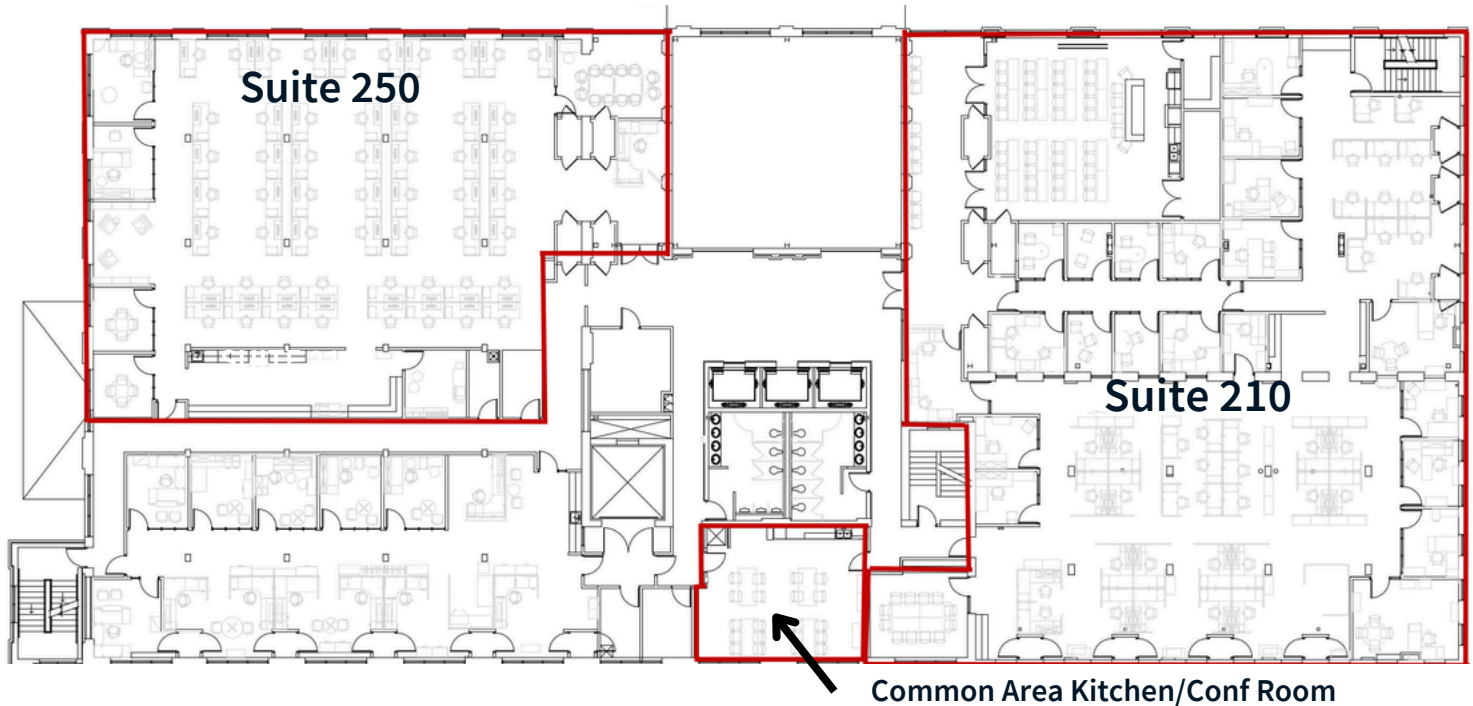


- Historic Widdicomb Building used as a factory in the Civil War Era
- 5 story, Class B building in Downtown Grand Rapids
- Built in 1911, underwent millions of dollars of renovations in 2005
- Second and Fourth floor suite availabilities
- A plethora of free onsite parking
- Walking to the west side's burgeoning Bridge Street Corridor, and all the restaurants and bars it has to offer
- Easy access to I-96



# Second Floor Availability

**\$19.00/MG**



Suite	RSF
Suite 210	10,560
Suite 250	6,192
Common Area Kitchen/Conf Room	588

Note: Rentable SF is calculated using a 14% core factor and allocating the SF of the shared conference room among the three suites on a prorated basis.



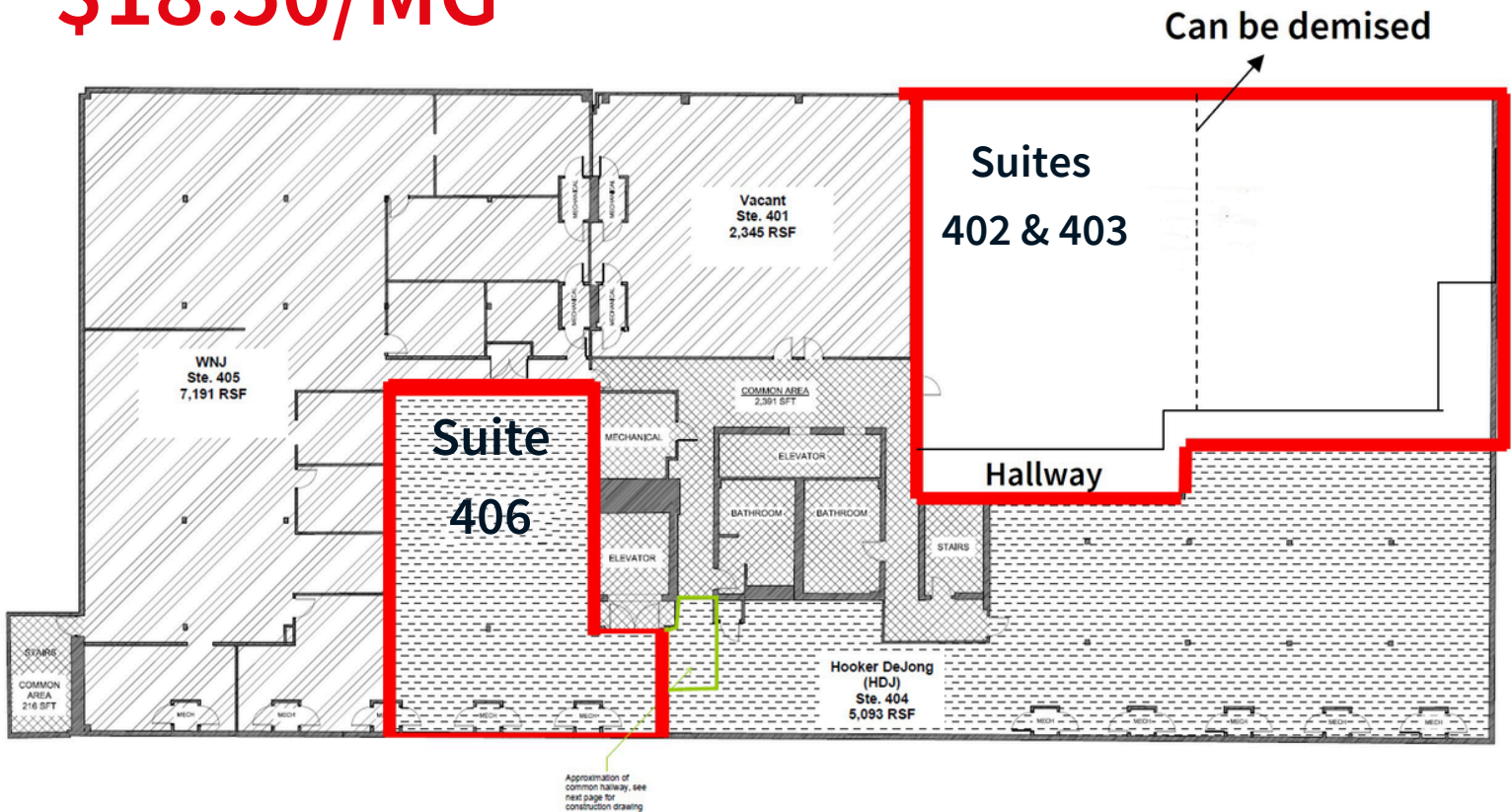
# Second Floor Photos





# Fourth Floor Availability

**\$18.50/MG**



Suite	RSF
Suite 402 & 403	4,496
Suite 406	2,088



# Fourth Floor Photos



**Jeff Karger**

Executive Vice President

[jeff.karger@jll.com](mailto:jeff.karger@jll.com)

+1 616 649 3532

[jll.com](http://jll.com)**Sarah Noordyke**

Senior Associate, Brokerage

[sarah.noordyke@jll.com](mailto:sarah.noordyke@jll.com)

+1 989 615 0732