

Loria

ANSLEY

1441 PEACHTREE STREET NE, ATLANTA GA 30309

3,177 SF OF GROUND RETAIL SPACE WITH 1,089 PATIO AVAILABLE



JLL

Unmatched Location



IN THE HEART OF
MIDTOWN'S ART DISTRICT,
STEPS FROM ANSLEY PARK

Within 1 mile

29,098

Population Density

\$157,593

Average Household Income

70,294

Daytime Population



Walkable to endless
local eateries, hotels,
and premier arts
& entertainment
destinations



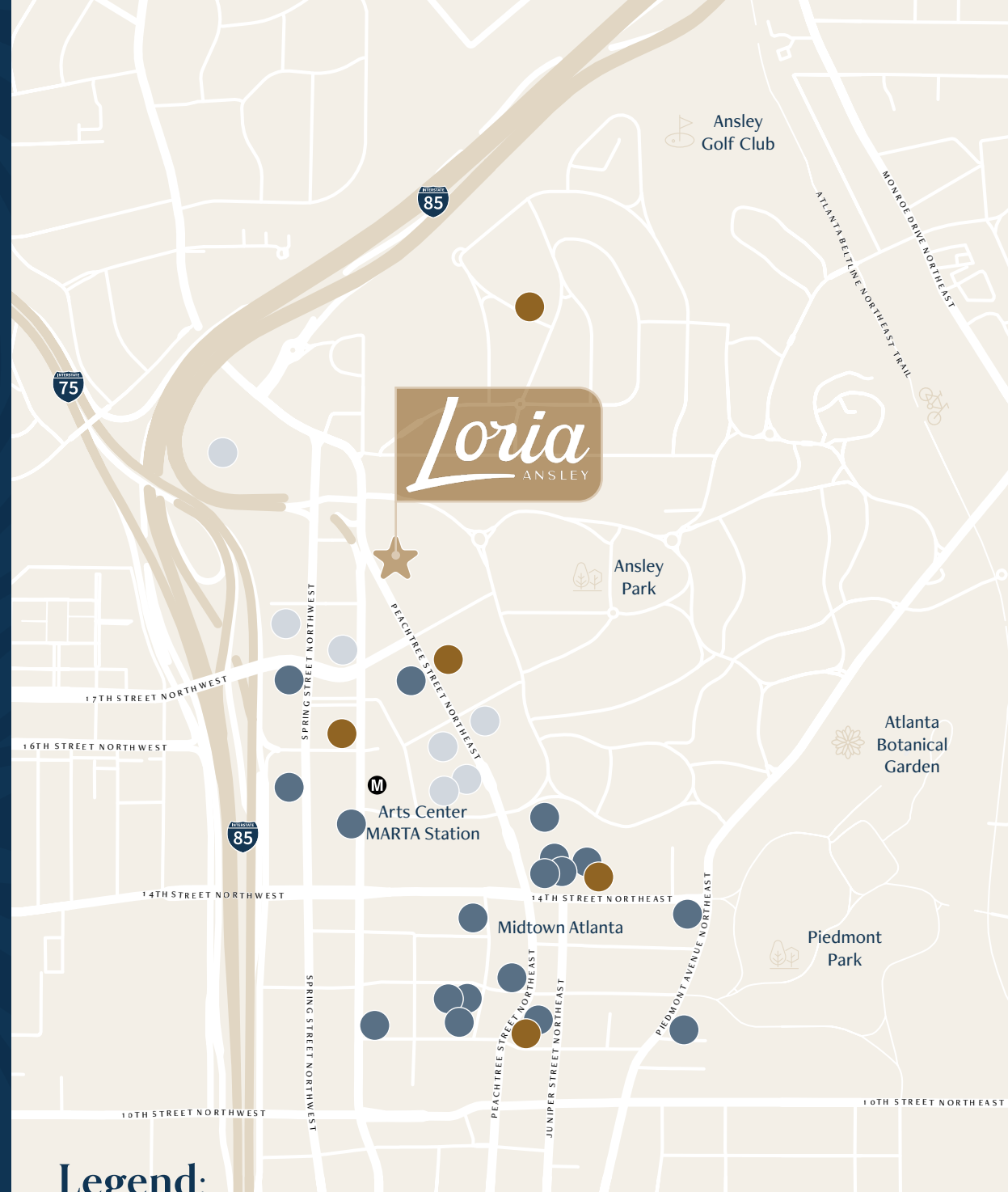
7 min walk to
Arts Center
MARTA Station



Located beneath
350 luxury
apartment homes



Prime street
visibility



Legend:



Restuarants



Hotels

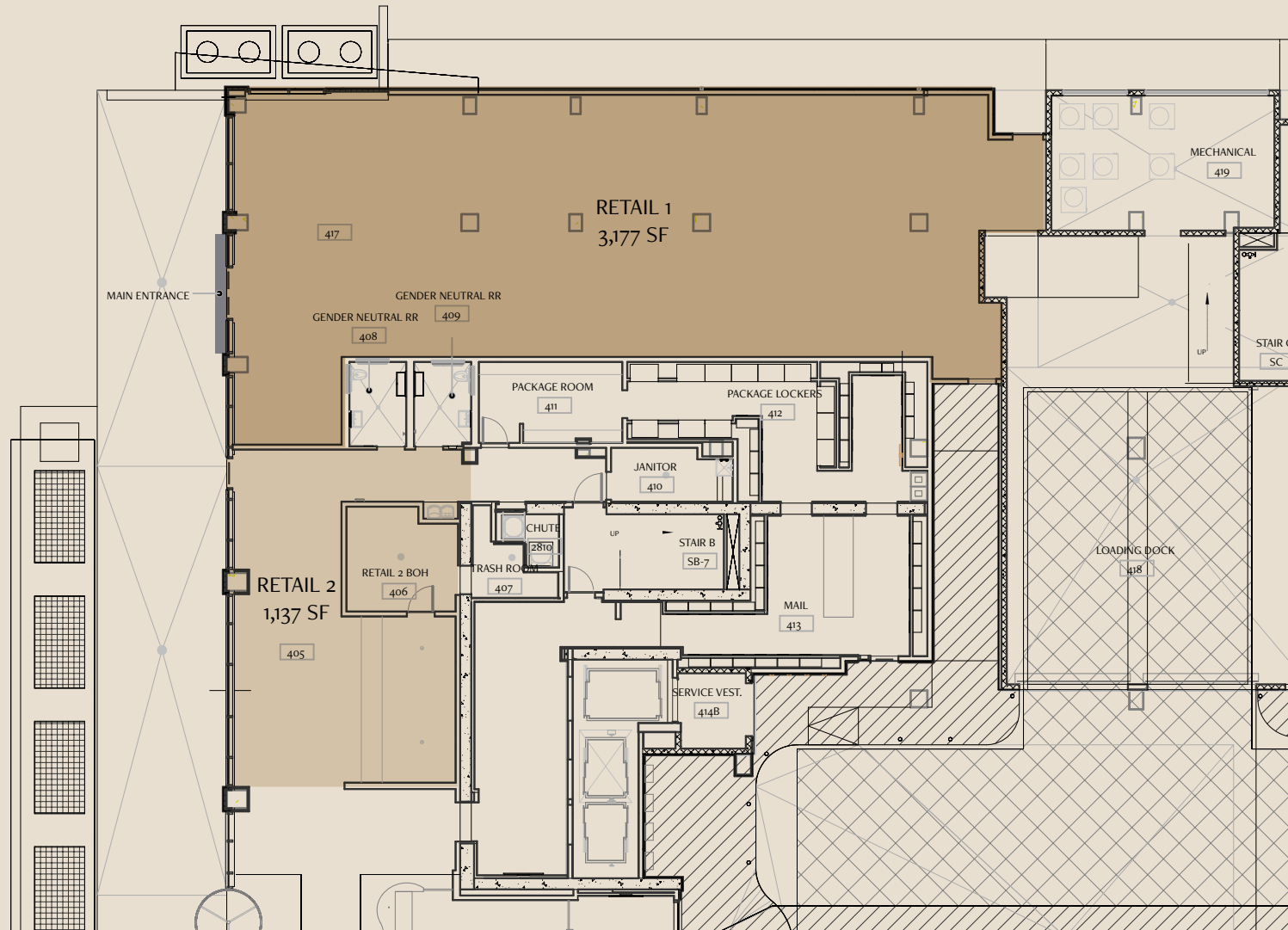


Arts & Entertainment





1441 PEACHTREE STREET NE, ATLANTA GA 30309



LEASING INQUIRIES:

Sherri Wilson

+1 404 995 2274
sherri.wilson@jll.com

Alec Volle

+1 770 530 4069
alec.volle@jll.com



Jones Lang LaSalle Americas, Inc.

Although information has been obtained from sources deemed reliable, neither Owner nor JLL makes any guarantees, warranties or representations, express or implied, as to the completeness or accuracy as to the information contained herein. Any projections, opinions, assumptions or estimates used are for example only. There may be differences between projected and actual results, and those differences may be material. The Property may be withdrawn without notice. Neither Owner nor JLL accepts any liability for any loss or damage suffered by any party resulting from reliance on this information. If the recipient of this information has signed a confidentiality agreement regarding this matter, this information is subject to the terms of that agreement. © 2025 Jones Lang LaSalle IP, Inc. All rights reserved.