 JLL SEE A BRIGHTER WAY

# For Sale

4300 W 133<sup>rd</sup> Street, Leawood, KS

26,570 SF owner-user building

Jim Gates, SIOR  
+ 1 913 469 4638  
[jim.gates@jll.com](mailto:jim.gates@jll.com)



# Property Overview

4300 W 133<sup>rd</sup> Street  
Leawood, KS

Total SF	26,570 SF
Site Area	3.40 Acres
Year Built	2008
Stories	One
Parking	112 surface spaces
2024 Taxes	\$109,848
Sale Price	\$6,000,000



## Median household income

1-mile	3-miles	5-miles
\$181,988	\$128,307	\$113,670

## Estimated population

1-mile	3-miles	5-miles
9,332	69,486	171,807

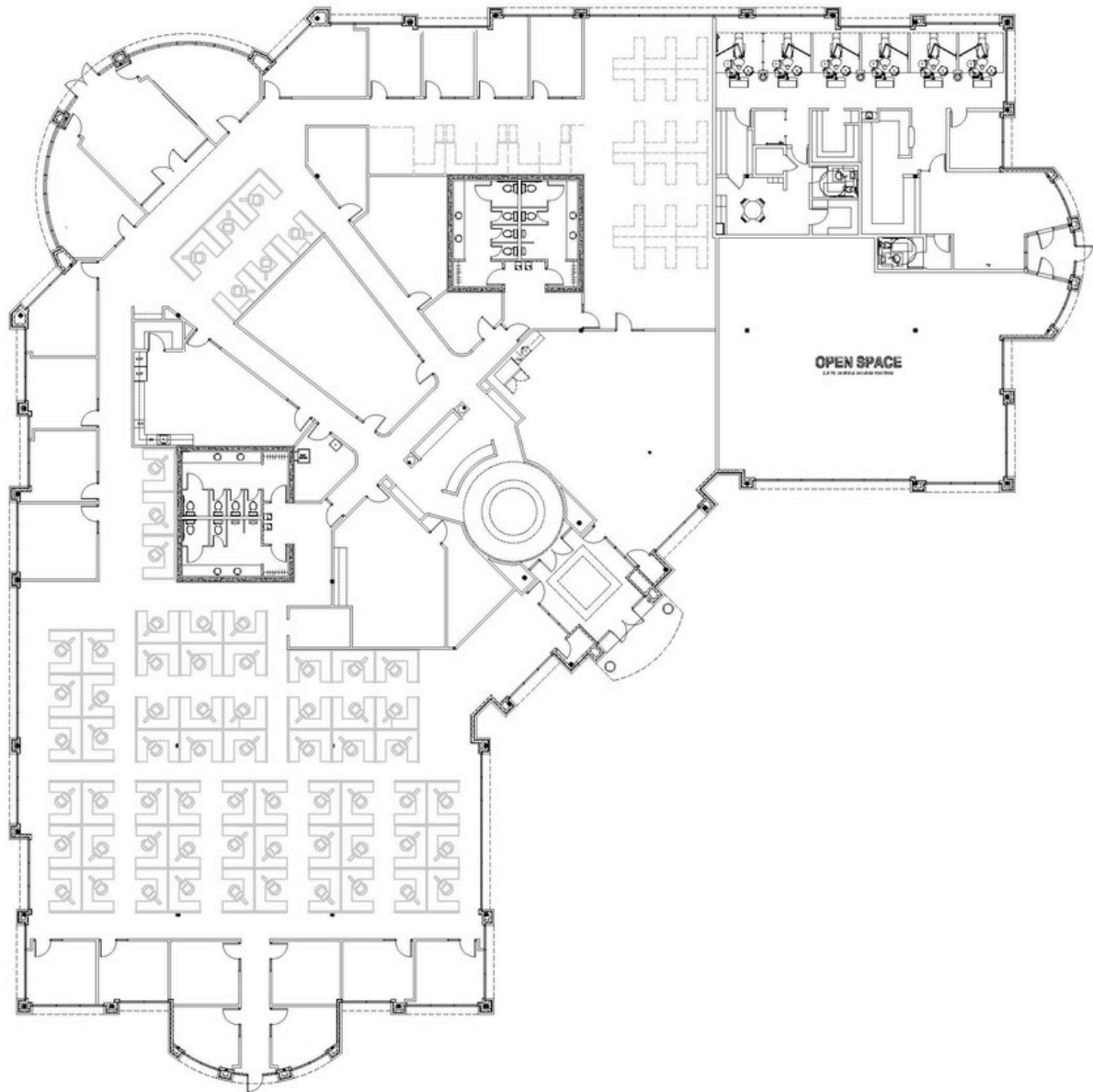


Photos



# Floor Plan

26,570 square feet





# Surrounding Area

The Property is settled on 3.4 acres of land set back along 133rd St. between Mission Road and Roe Avenue in Leawood, KS. A residential subdivision and elementary are positioned north and east of the property providing a sense of seclusion and privacy. An abundant amount of retail and amenity options are located within two miles of the building on the 135th Street corridor.







**JLL**

Jim Gates, SIOR  
+ 1 913 469 4638  
[jim.gates@jll.com](mailto:jim.gates@jll.com)

Although information has been obtained from sources deemed reliable, JLL does not make any guarantees, warranties or representations, express or implied, as to the completeness or accuracy as to the information contained herein. Any projections, opinions, assumptions or estimates used are for example only. There may be differences between projected and actual results, and those differences may be material. JLL does not accept any liability for any loss or damage suffered by any party resulting from reliance on this information. If the recipient of this information has signed a confidentiality agreement with JLL regarding this matter, this information is subject to the terms of that agreement. ©2025 Jones Lang LaSalle Brokerage, Inc. All rights reserved.