

# For Lease



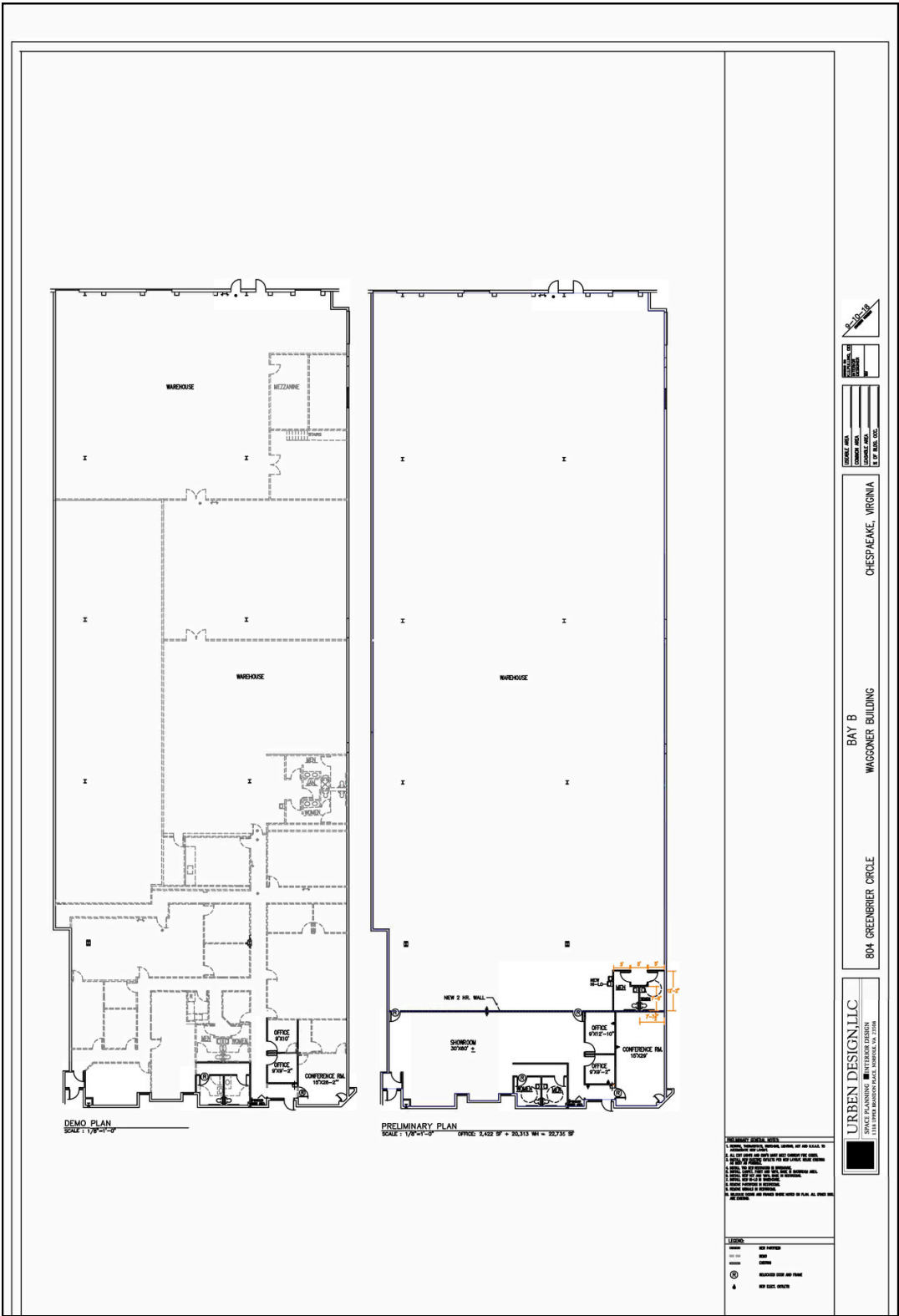
**804 Greenbrier Circle, Suite B  
Chesapeake, VA 23320**

## **Office / manufacturing / warehouse space**

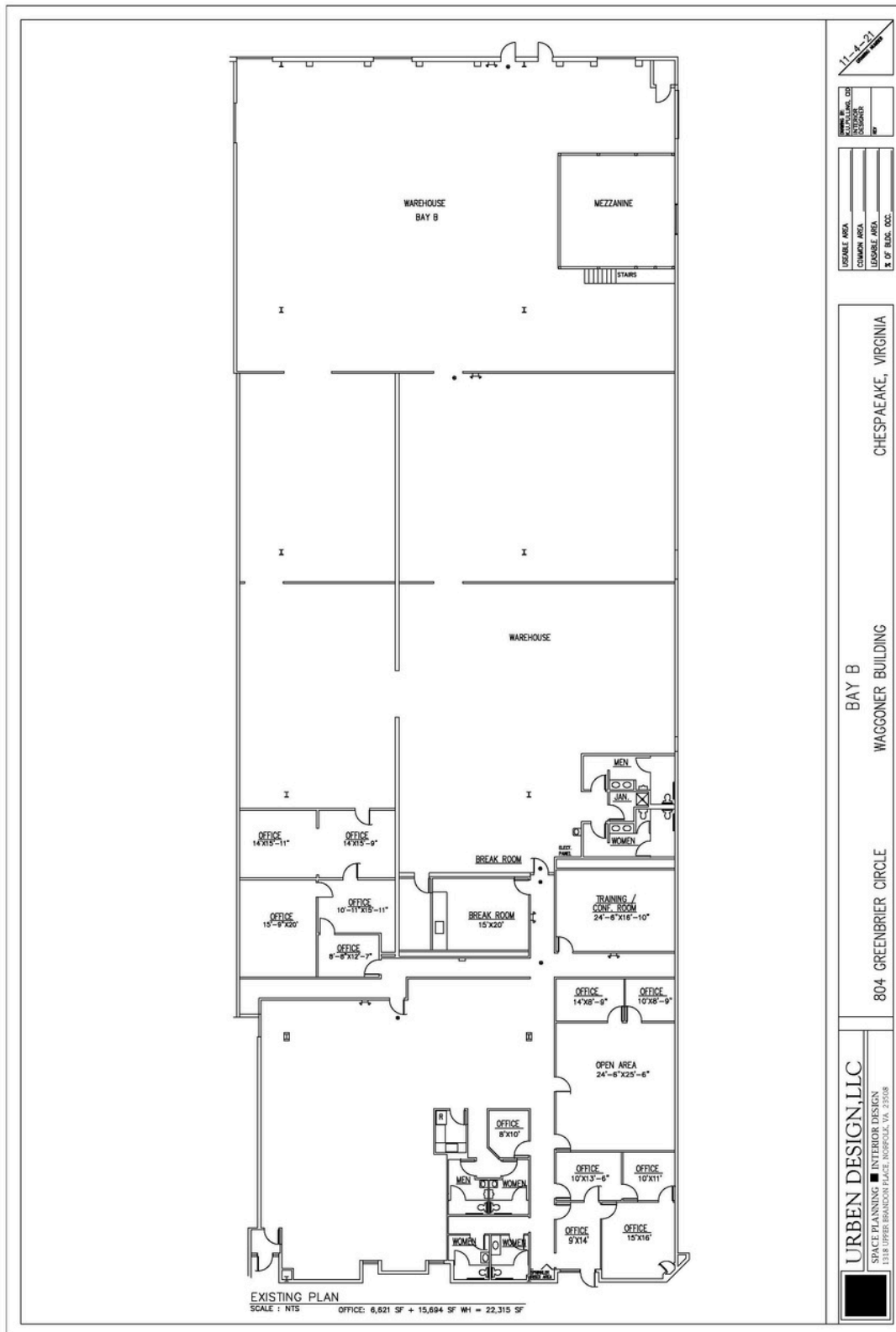
- High-quality space in attractive park
- 75,000-square-foot office/warehouse flex building
- 22,735 square feet available
- 4.92-acre site zoned PUD
- Three-phase power, natural gas, city water and sewer
- 24' clear ceiling height
- 49' x 49' typical column spacing
- ESFR sprinkler system
- Desirable Greenbrier location close to all amenities
- immediate access to I-64

# Bay B Concept Plan

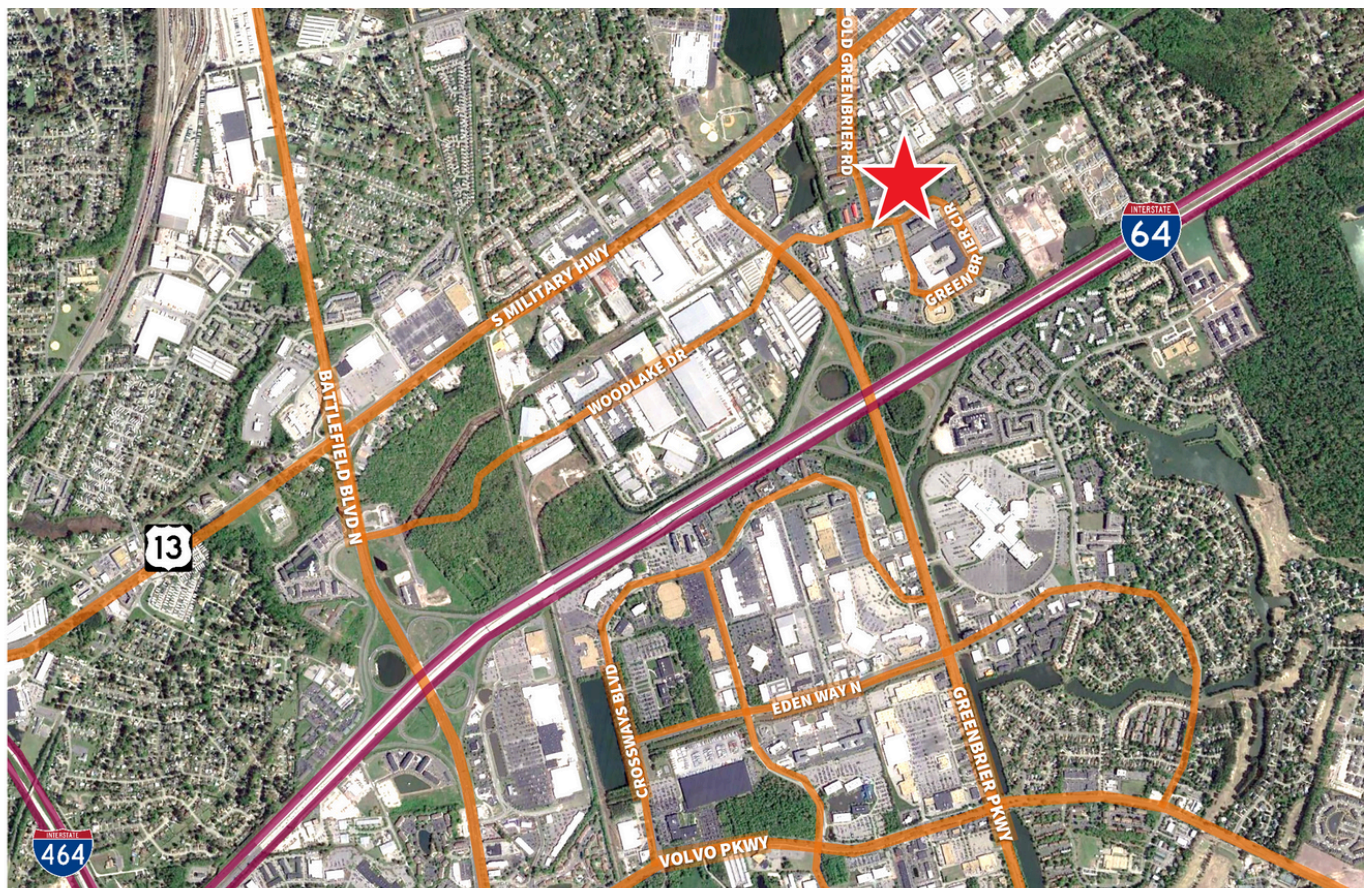
- 22,735 s.f. available
- 6,600 s.f. office (a portion of the office space can be converted to warehouse space)
- 16,135 s.f. warehouse
- Two 8' x 8' dock doors
- One drive-in door



## Bay B As Built







Contact:

Wesley Edwards, CCIM  
Senior Vice President  
[wesley.edwards@jll.com](mailto:wesley.edwards@jll.com)  
+1 757 287 4953

999 Waterside Drive, Suite 850 | Norfolk, VA 23510 | 757 965 3006

Although information has been obtained from sources deemed reliable, neither Owner nor JLL makes any guarantees, warranties or representations, express or implied, as to the completeness or accuracy as to the information contained herein. Any projections, opinions, assumptions or estimates used are for example only. There may be differences between projected and actual results, and those differences may be material. The Property may be withdrawn without notice. Neither Owner nor JLL accepts any liability for any loss or damage suffered by any party resulting from reliance on this information. If the recipient of this information has signed a confidentiality agreement regarding this matter, this information is subject to the terms of that agreement. © 2025 Jones Lang LaSalle Brokerage, Inc. All rights reserved.