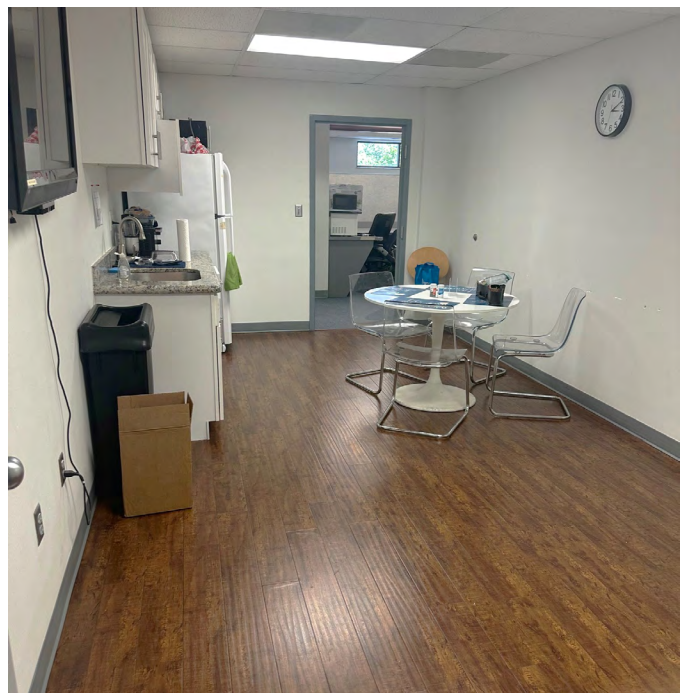
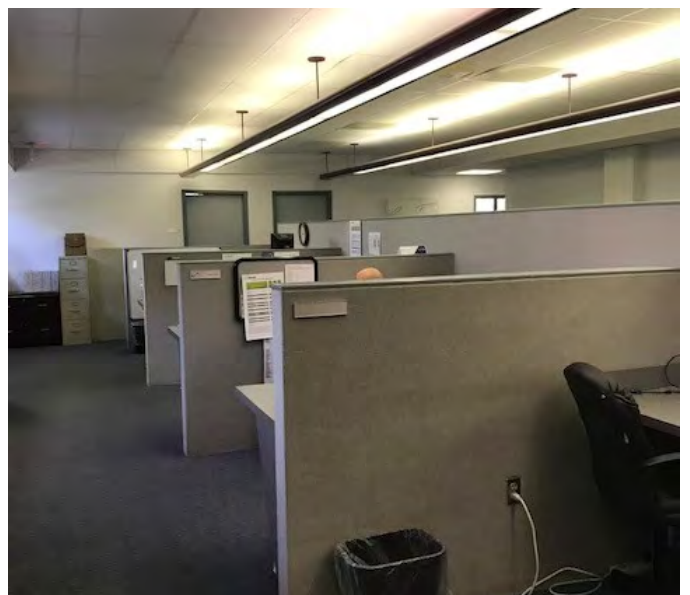
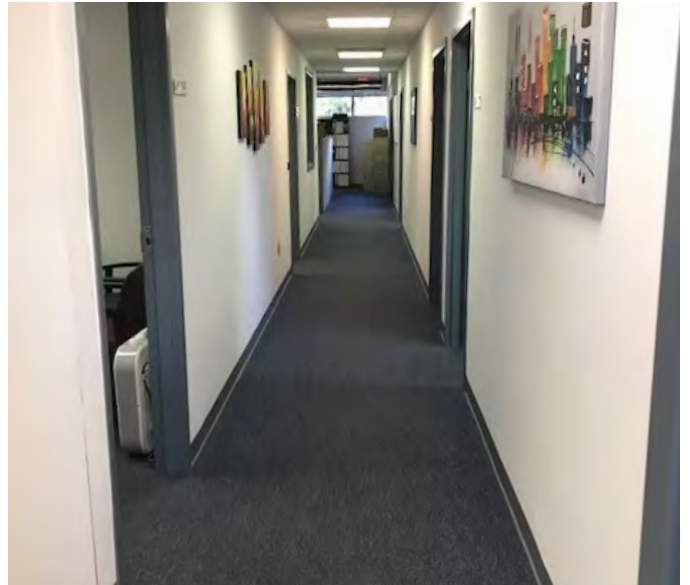
 **JLL** SEE A BRIGHTER WAY

For Sale

218 and 226 Jackson Street
Maitland, FL 32751

\$2,600,000





218 and 226 Jackson Street / Maitland, FL



10,015 RSF available (entire building)



Starbucks, banks, city hall, restaurants, museums and more within walking distance



The property is located in downtown pedestrian-friendly Maitland



YearBuilt: 1989



Two property portfolio (218 & 226 Jackson St)



Zoning: MTL MX



0.5acres / 21,846SF



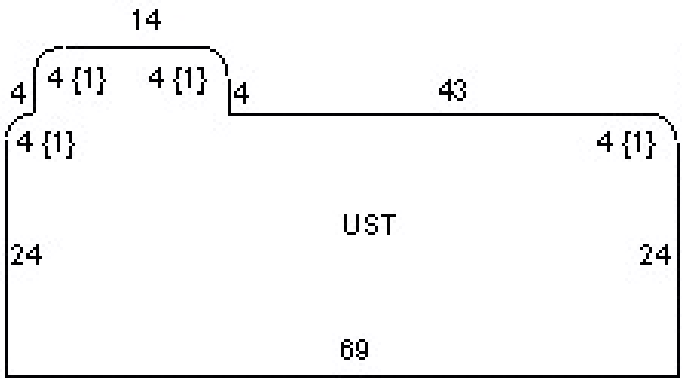
Offered at \$2,600,000



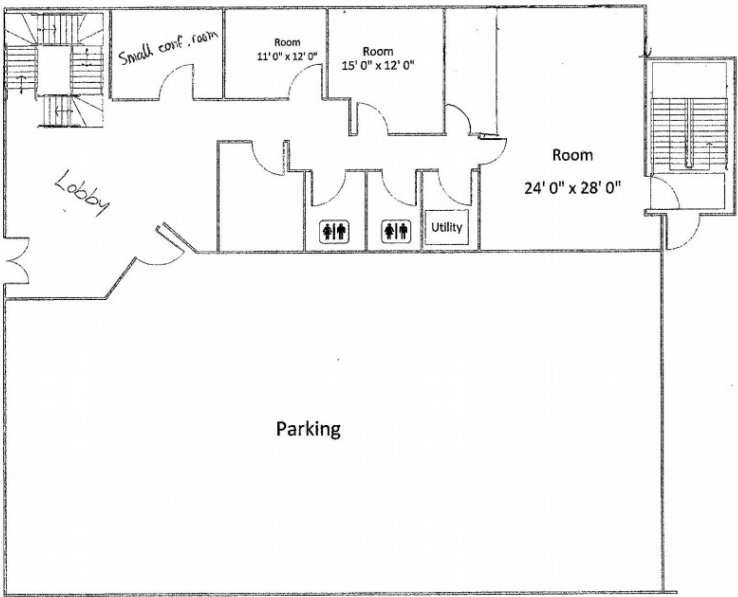
25 Parking spaces (12 covered);
4.76/1,000 ratio



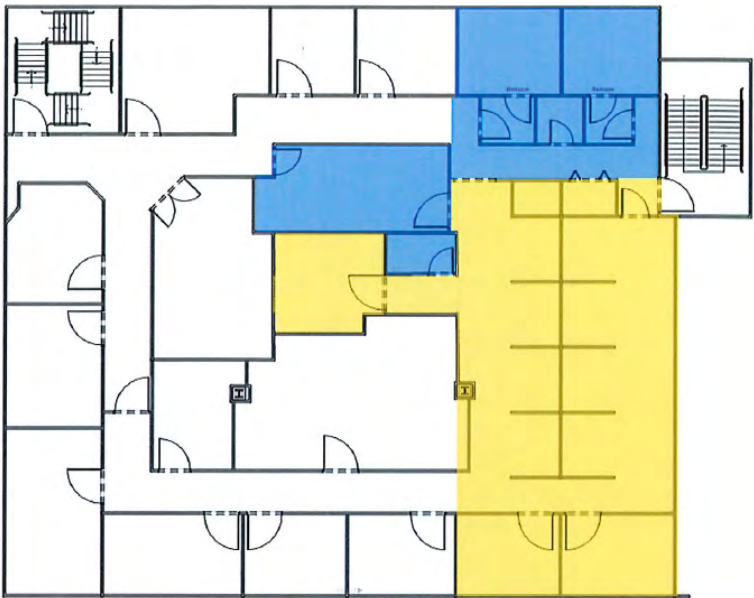
Available immediately



Third floor



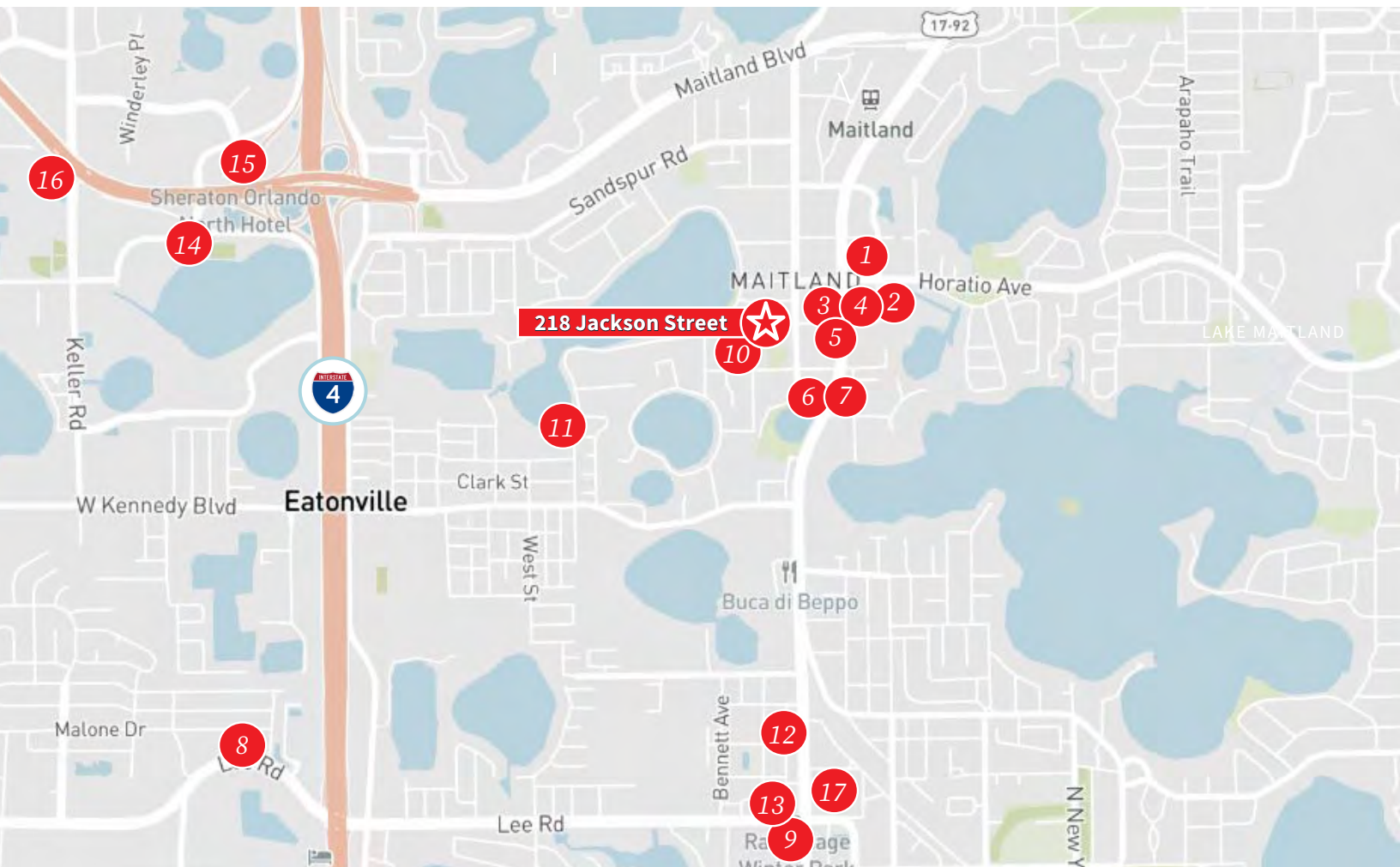
Ground floor / parking



Second floor

Maitland

The City of Maitland is a premier suburban community of Orlando. Located conveniently off of I-4 and just 7 miles from downtown Orlando, Maitland offers the benefits of a larger metro with access to amenities. Employees benefit from easy access to area retail, restaurant and service amenities in addition to variety housing options in the surrounding area.



- | | |
|--------------------------------------|---|
| 1. Maitland Plaza | 10. Art & History Museums of Maitland |
| 2. Foxtail Coffee Co. | 11. Audubon Center |
| 3. Starbucks | 12. SpringHill Suites - Winter Park |
| 4. McDonald's | 13. Hilton Garden Inn - Winter Park |
| 5. Firehouse Subs | 14. Homewood Suites - Orlando/Maitland |
| 6. Antonio's Italian | 15. Sheraton - Orlando North |
| 7. Luke's Kitchen & Bar | 16. Courtyard Hotel - Orlando/Altamonte Springs |
| 8. Christner's Prime Steak & Lobster | 17. Winter Park Square |
| 9. Fleming's Prime Steakhouse | (Nordstrom Rack, Sephora, Whole Foods) |

Area Amenities



Jamie Barati
Senior Vice President
407-930-1803
jamie.barati@jll.com

John Worrell
Senior Vice President
321-684-9240
john.worrell@jll.com